

Renfrewshire Economic Development Newsletter – April 2016



Important Changes to the Newsletter Statistics

There have been significant changes to the claimant count on nomis, which is part of the Office for National Statistics (ONS).

Previously the most regularly updated figures indicating, at local authority level, those unemployed and seeking work were the Job Seeker Allowance (JSA) figures. These figures have been used and reported on regularly to the Economy and Jobs Policy Board over the past few years.

The new Universal Credit (UC) system has rolled out in stages across the country since 2013. There have been no published figures available on UC since the roll out until now.

From March 2016 the Nomis figures have changed and Job Seeker's Allowance (JSA) and Universal Credit (UC) are measured together in one statistic: the claimant count.

The Claimant Count

The claimant count is a measure of the number of people with live claims for the principal reason of being unemployed. Previously, Job Seeker's Allowance (JSA) was the main unemployment benefit. Now, Universal Credit (UC) is included.

These new experimental statistics that now combine JSA and UC stretch back to January 2013 when Universal Credit started to roll out in pilot areas. Although experimental, this new claimant count is now the new standard. By contrast, the previous norm of using purely JSA claimants is no longer the official claimant count and is being slowly phased out.

The experimental statistics still include UC claimants who are not in-work, but are also not required to seek work – a group that skew the statistics for as long as they are counted.

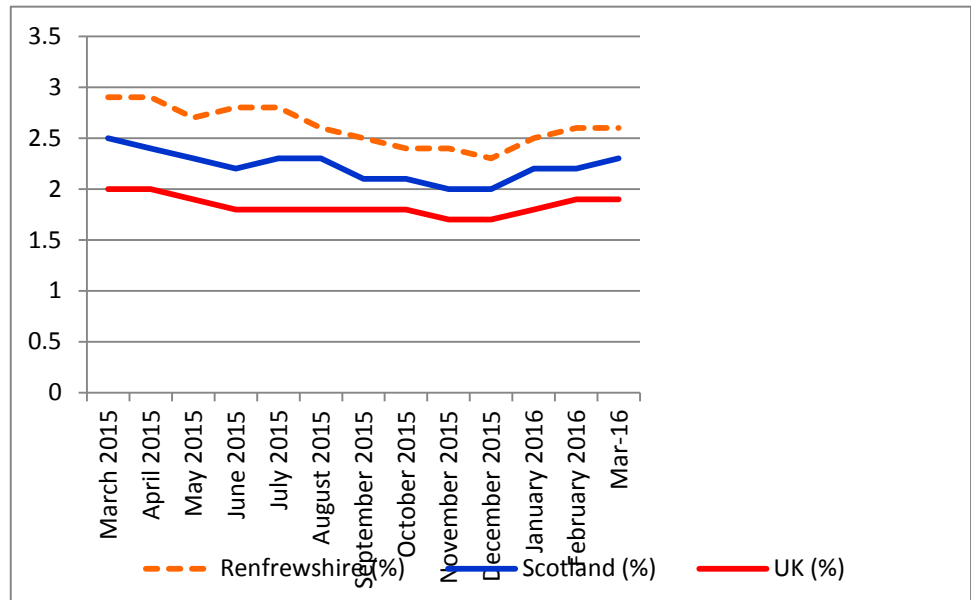
The new Claimant Count figures are relatively limited at present and provide information on key age groups but not length of unemployment or the breakdown of male /female. It is expected that this further breakdown of information will become available soon.

March 2016: Claimant Count Figures

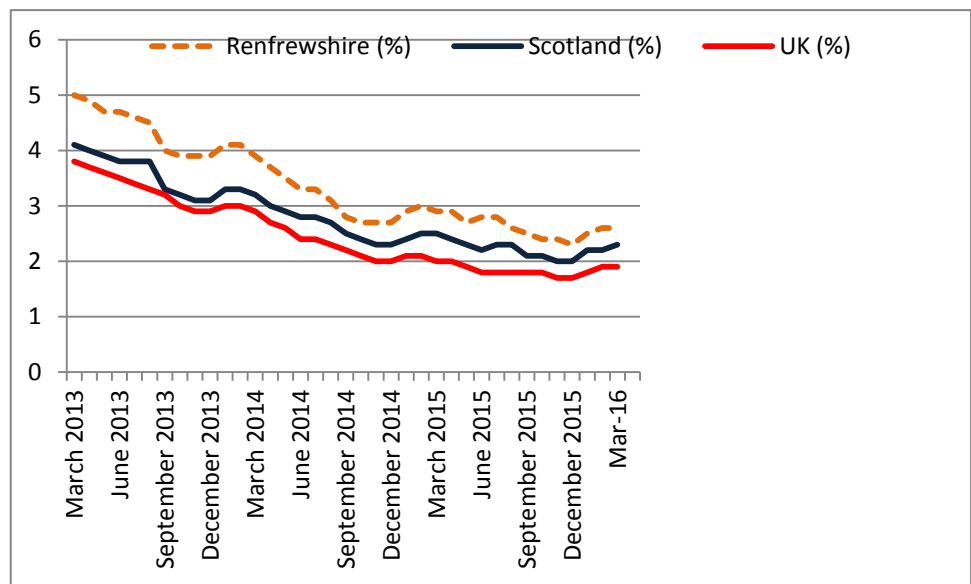
Claimant Count: All Ages (16+)

- The claimant count rate for Renfrewshire for March 2016 is 2.6%, with claimants totalling 2,940.
- This month the rate is unchanged.
- Renfrewshire is currently ranked 24th out of the 32 local authorities.
- The rate this time last year was higher at 2.9%.
- Over the last 3 years the rate has dropped from 5% to 2.6%

All Ages(16+): Claimant count rate 2015-2016



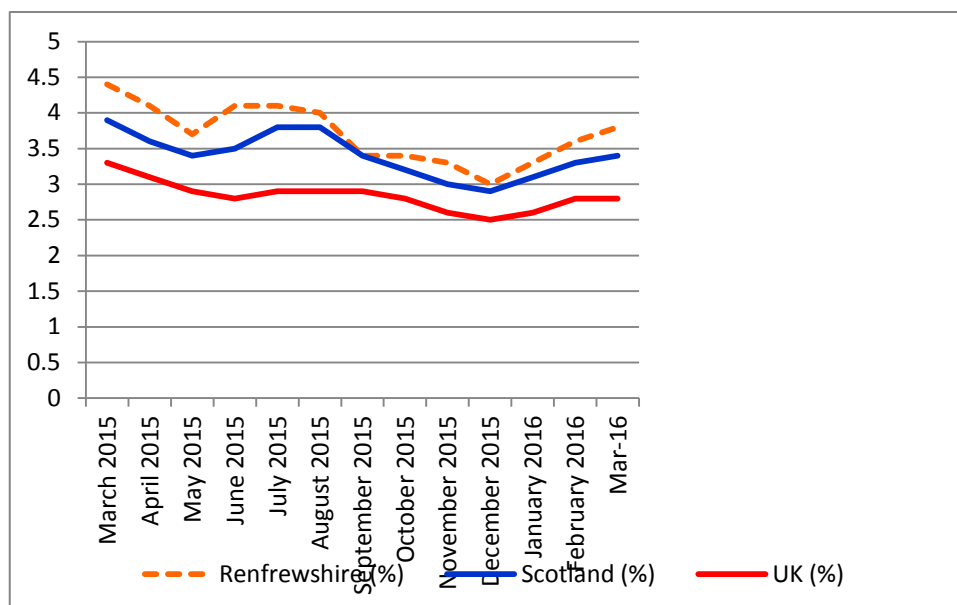
All Ages(16+): Claimant count rate 2013-2016



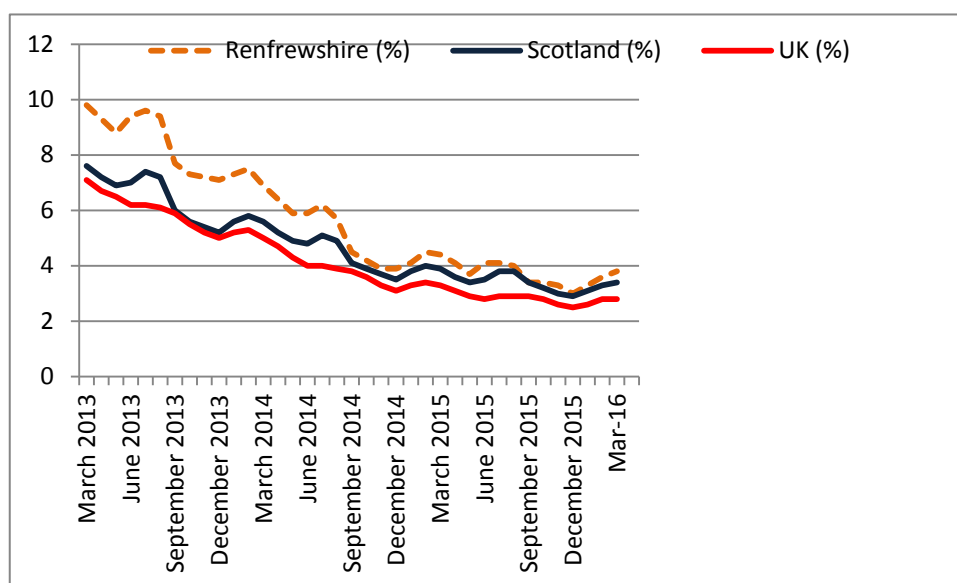
Claimant Count: Youth (18-24)

- The claimant count rate for Renfrewshire for March 2016 was 3.8% with claimants totalling 570.
- This month the rate has gone up by 0.2%.
- Renfrewshire is currently ranked 18th out of the 32 local authorities.
- The rate this time last year was higher at 4.4%
- Over the last 3 years the rate has fallen from 10% to 3.8%

Youth (18-24): Claimant count rate 2015-2016



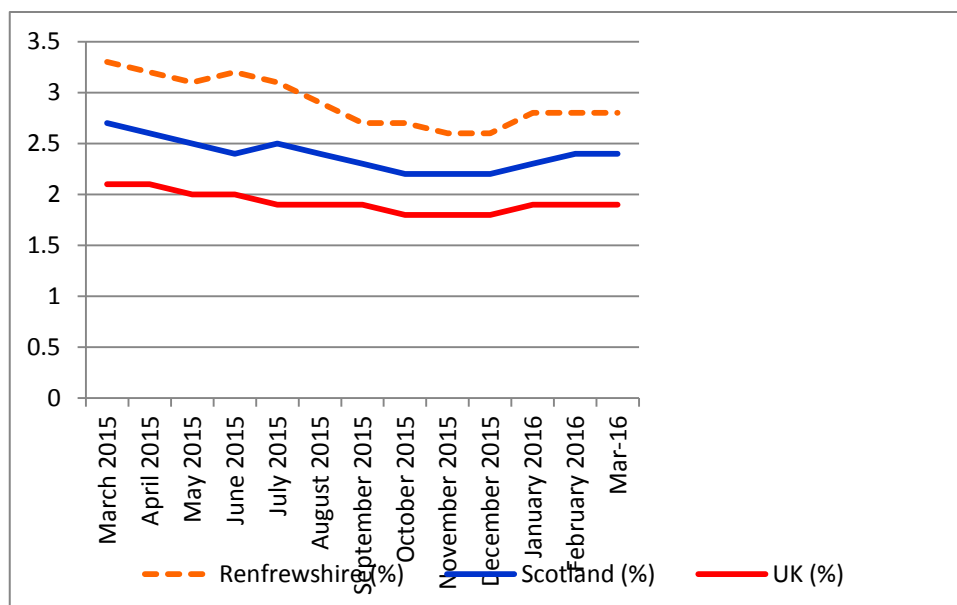
Youth (18-24): Claimant count rate 2013-2016



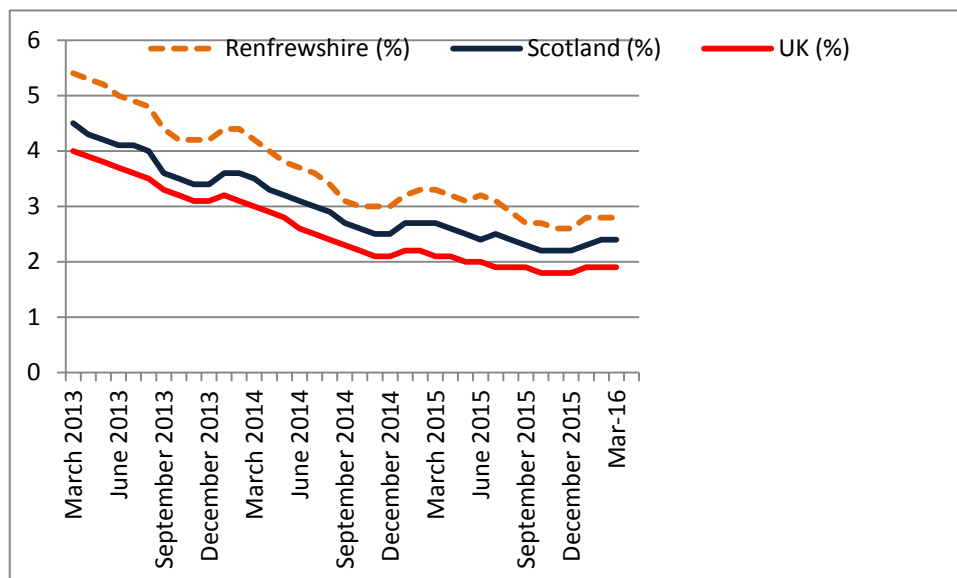
Claimant Count: 25-49

- The claimant count rate for Renfrewshire for March 2016 was 2.8% with claimants totalling 1,600.
- This month the rate has remained constant.
- Renfrewshire is currently ranked 23rd out of the 32 local authorities.
- The rate this time last year was higher at 3.3%
- Over the last 3 years the rate has fallen from 5.4% to 2.8%

25-49: Claimant count rate 2015-2016



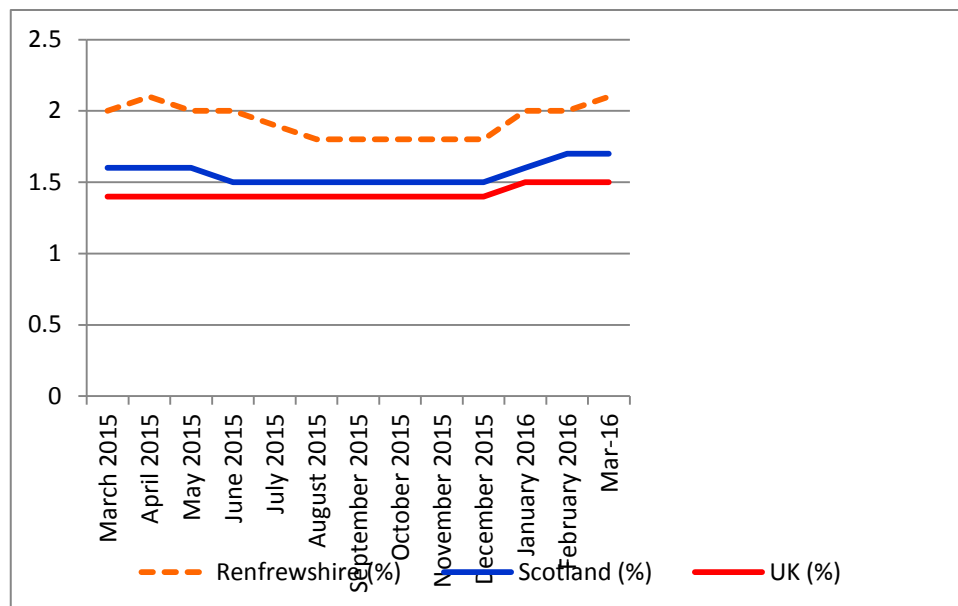
25-49: Claimant count rate 2015-2016



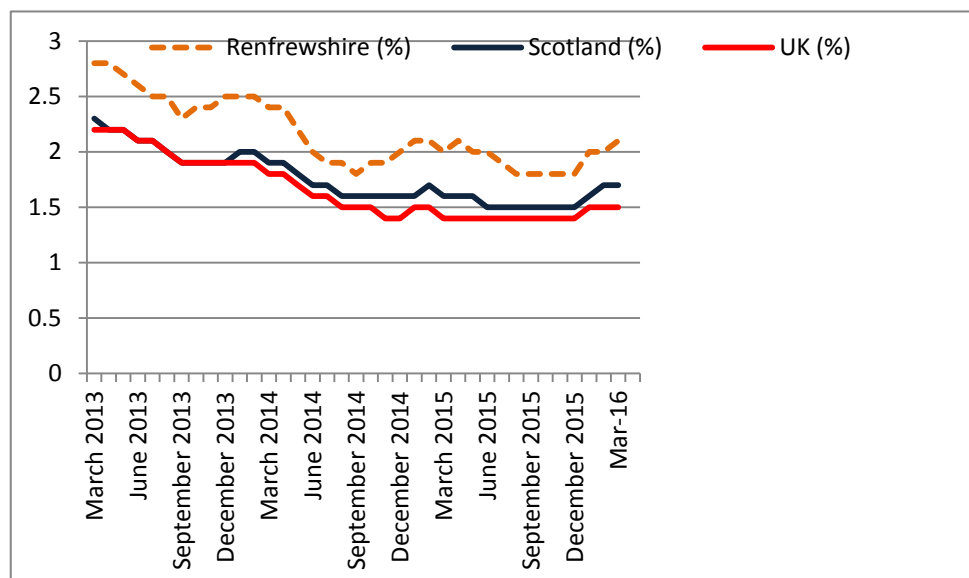
Claimant Count: 25-49

- The claimant count rate for Renfrewshire for March 2016 was 2.2% with claimants totalling 750.
- This month the rate has increased by 0.1%.
- Renfrewshire is currently ranked 25th out of the 32 local authorities.
- The rate this time last year was lower at 2.0%
- Over the last 3 years the rate has fallen from 2.8% to 2.1%

Ages 50+: Claimant count rate 2015-2016



Ages 50+: Claimant count rate 2015-2016



Invest in Renfrewshire Update – April 2016

INVEST IN EMPLOYMENT

Since the launch of Invest in Renfrewshire in June 2012 **1,027** new paid posts have been created:

- **774** new jobs have been created through the wage subsidy / Employer Recruitment Incentive programmes.
- **200** Graduate Internships have been created, **135** within the Council and **65** with local companies (approved).
- **88** people have started traineeships, **80** with the Council and **8** with Businesses.

In addition:

- **7,392** unemployed people have registered and received support from the Invest in Renfrewshire employability service.
- **2,286** additional people have been supported to move into wider employment opportunities.

INVEST IN COMMUNITIES

The Invest in Renfrewshire Social Enterprise Small Grants Fund, launched in December 2014, with a budget of £200k has now:

- Dealt with enquiries from more than **56** social enterprise companies and organisations.
- Approved **15** awards totalling **£97,422**.
- Additionally, **4** Community Traineeships grants have been awarded, totalling **£20,000**.

INVEST IN BUSINESS

877 local companies have signed up to the Invest in Renfrewshire initiative of which:

- **374** companies have been offered grants to pursue development, training, exhibition and ICT projects, amounting to combined funding of over **£1,666,940**.
- Funding of **£87,100** has been provided through the micro loan fund.
- The Retail Improvement Scheme has received **161** formal applications. The applications to hand are **12**. The amount of grant support awarded to date is approximately **£1,000,000**.

In the last **42** months, since the start of the new Business Gateway contract:

- **1,112** new companies have been established with Business Gateway support.
- **459** businesses have demonstrated growth aspiration and been given a dedicated business adviser.
- **313** start-up workshops and **228** business growth workshops have been delivered.