

---

**To: Education and Children's Services Policy Board**

**On: 16 January 2020**

---

**Report by: Director of Children's Services**

---

**Heading: Response to proposal to consult on a catchment review affecting Inchinnan Primary School and Rashielea Primary School**

---

## **1. Summary**

- 1.1 On 22 August 2019 the education and children's services policy board agreed to a formal consultation on a proposal to review catchment arrangements affecting Inchinnan Primary School and Rashielea Primary School.
- 1.2 In line with legislative requirements detailed in the Schools (Consultation) (Scotland) Act 2010, amended through the enactment of the Children and Young People (Scotland) Act 2014, a formal consultation on the proposal was undertaken and a consultation document was prepared and issued simultaneously to parents and interested parties affected by the proposal.
- 1.3 The consultation commenced on 2 September 2019 and closed at 12 noon on 4 November 2019.
- 1.4 The purpose of this report is to provide the education and children's services policy board with recommendations which recognise the issues raised, comments made and responses provided, in the course of the consultation exercise. A report on the issues raised and a consideration of these is included as Appendix 1 to this document.
- 1.5 The outcome of this consultation demonstrates support for the proposal and the education and children's services policy board is therefore asked to approve the recommendation to alter the catchment areas affecting Inchinnan Primary School and Rashielea Primary School.

---

## **2. Recommendations**

- 2.1. The education and children's services policy board is asked to:
  - note the issues raised through the formal consultation detailed in Appendix 1;



- note the comments made by Education Scotland in relation to the educational benefits of the proposals detailed in appendix 6;
  - approve the revised catchment arrangements affecting Inchinnan Primary School and Rashielea Primary School; and
  - approve the implementation of the catchment changes from August 2021.
- 

### **3. Background**

- 3.1 The education and children's services policy board agreed to a formal consultation on the proposal to review catchment arrangements affecting Inchinnan Primary School and Rashielea Primary School.
  - 3.2 Elected members agreed a consultation document which was subsequently issued to parents and interested parties affected by the proposal. A copy of the consultation document is attached to this report as Appendix 2.
  - 3.3 The consultation commenced on 2 September 2019 and closed at 12 noon on 4 November 2019.
  - 3.4 Responses to the proposal to review the catchment areas affecting Inchinnan Primary School and Rashielea Primary School are contained within Appendix 1 to this report.
- 

### **4. Consultation**

- 4.1. Following agreement to consult on the proposal to review catchment arrangements a consultation document was issued to parents and interested parties affected by the proposals.
  - 4.2. The consultation document invited members of the public to respond to the proposals either through contributions to a public consultation meeting or by written submissions in hard copy or email to the director of children's services. Interested parties also had the opportunity to take part in the consultation through the Council's online survey.
  - 4.3. A public meeting was held for parents and members of the public as part of the consultation process on 11 September 2019.

A brief presentation was made by officers from children's services to outline the background to the proposal, highlighting the impact this would have on the school communities. Questions were invited and notes of the questions asked and the answers provided by education officers were recorded.
  - 4.4. A report on written responses received and comments made through the Council's online survey is attached as Appendix 1 to this report.
- 

### **5. Comments and observations arising from the consultation**

- 5.1. During the course of the consultation, questions were raised regarding how the Council would progress this proposal. Appendix 1 to this document, "Response to the consultation on the proposal to review catchment arrangements affecting Inchinnan Primary School and Rashielea Primary School", details the questions asked and the responses provided.



- 5.2. Education Scotland has been consulted on the proposal in line with legislative requirements detailed in the Schools (Consultation) (Scotland) Act 2010, amended through the enactment of the Children and Young People (Scotland) Act 2014. The response received from Education Scotland was supportive of the Council's proposal and is attached to this document as Appendix 6. A summary of this finding is noted below.
- 5.3. Education Scotland found that overall, Renfrewshire Council's proposal to review the catchment area of Rashielea Primary School and Inchinnan Primary School offers potential educational benefit by allocating an area where a new housing development will be built to the school site better able to accommodate any increased roll that results.

---

## **Implications of this report**

### **1. Financial**

None. The cost of free school transport will have to be addressed from existing resources.

### **2. HR and Organisational Development**

None.

### **3. Community/Council Planning**

Our Renfrewshire is thriving - All non-denominational pupils within the defined area will have the opportunity to attend the same primary school.

### **4. Legal**

Renfrewshire Council will adhere to the Schools (Consultation) (Scotland) Act 2010 (the 2010 Act) in respect of any proposals that alter education provision.

### **5. Property/Assets**

Through its school estate the Council aims to have an efficient and well maintained property portfolio which provides learning environments which support the delivery of the curriculum.

### **6. Information Technology**

None.

### **7. Equality and Human Rights**

The Recommendations contained within this report have been assessed in relation to their impact on equalities and human rights. No negative impacts on equality groups or potential for infringement of individuals' human rights have been identified arising from the recommendations contained in the report. An equalities impact assessment is attached as Appendix 5 to this report.

### **8. Health and Safety**

None.

### **9. Procurement**

None.



- 10. Risk**  
None.
- 11. Privacy Impact**  
None.
- 12. Cosla Policy Position**  
None.
- 13. Climate Risk**  
None.

---

### List of Background Papers

- (a) Background Paper 1: "Proposal to Consult on a catchment review affecting Inchinnan Primary School and Rashielea Primary School". ECSPB 22 August 2019

The foregoing background papers will be retained within children's services for inspection by the public for the prescribed period of four years from the date of the meeting. The contact officer within the service is Ian Thomson, Education Manager, 0141 618 7241, [ian.thomson@renfrewshire.gov.uk](mailto:ian.thomson@renfrewshire.gov.uk)

---

**Children's Services**  
IT/GMcK/LG  
9 December 2019

**Author:** Ian Thomson, Education Manager, 0141 618 7241, [ian.thomson@renfrewshire.gov.uk](mailto:ian.thomson@renfrewshire.gov.uk)



## Response to the consultation on the proposal to review catchment arrangements affecting Inchinnan Primary School and Rashielea Primary School.

### 1. Consultation Process

- 1.1. Following agreement to consult on the proposal of a catchment review affecting Inchinnan Primary School and Rashielea Primary School a consultation document was issued to all interested parties.
- 1.2. A public consultation meeting was held with parents, members of the public and staff from the affected schools on 11 September 2019.
- 1.3. The consultation commenced on 2 September 2019 and closed at 12 noon on 4 November 2019.
- 1.4. Copies of the consultation document were made available to parents of every pupil in attendance at the public meeting and to all parent council groups. Copies of the document were also distributed to local libraries and a copy was placed on the Council website. An advert to notify the public of the consultation meeting was also placed in the local press. In addition, the consultation document was made available to council officers, local elected members, MSPs and MPs for the Renfrewshire area and Education Scotland.
- 1.5. All formal responses submitted as part of the consultation exercise have been retained and can be viewed on request to the director of children's services.

### 2. The Consultation

A number of written responses were received from interested parties registering their comments on the proposal. The following is a breakdown of responses that were received:

Category	Number of Responses	Type of Response
Friend	1	on-line survey or questionnaire
Other	2	on-line survey or questionnaire
Parent/ Carer	27	on-line survey or questionnaire
Pupil of affected school	2	on-line survey or questionnaire
Renfrewshire Resident	1	on-line survey or questionnaire
School staff	2	on-line survey or questionnaire
Parent/ Carer	2	e-mailed question

- 2.1. The public meeting was held in Rashielea Primary School on 11 September 2019 and was attended by 23 people.
- 2.2. A note of the meeting was taken and can be obtained by request to the director of children's services and can be viewed on the Council website.



- 2.3. The staff at both schools were advised of the consultation and had the opportunity to attend the public event.

### **3. Analysis of key issues raised during the consultation**

- 3.1. 2 general enquiries and 35 responses, totalling 92 comments, were received via the on-line survey or questionnaire.
- 3.2. Of the 35 responses received 16 responders, totalling 28 comments, indicated that they did not wish their comments to be made public. These comments have been considered and responded to through Renfrewshire Council's responses noted at section 4 below but they are not recorded as specific questions or comments below.
- 3.3. 70 comments (76.09%) were supportive of the proposal and 22 (23.91%) comments were against.

### **4. Response to key issues raised during the consultation**

- 4.1. Questions, comments and responses from public meeting have been summarised below. The director of children's services advised that:
- 4.1.1. Renfrewshire Council approved a new school estate management plan (SEMP) in May 2019;
- 4.1.2. The Council continually reviews the performance of the school estate in terms of core fact findings which relate to the sufficiency, condition and suitability of buildings;
- 4.1.3. The new SEMP also includes assessment of current and future housing development (considering how new housing impacts on roll projections);
- 4.1.4. A proposal was approved to consult on a catchment review affecting Inchinnan Primary School and Rashielea Primary School;
- 4.1.5. If approved the new Cala development at Northbar in Erskine would be re-zoned from Inchinnan Primary School catchment area to Rashielea Primary School catchment area;
- 4.1.6. Attendees were advised of Renfrewshire Council's commitment to the Equalities Act 2010; and
- 4.1.7. The presentation delivered outlined the rationale and timeline of the proposal. It highlighted the Council's commitment to improving outcomes for all children through careful management of the school estate.
- 4.1.8. The director of children's services and an education manager conducted a question and answer session:

- Q: Are you saying that the breakout spaces available within Rashielea can accommodate the additional pupils better?
- R: Both primary schools can accommodate the projected number of pupils this housing development generates.
- Q: What do you mean by breakout spaces?
- R: Our schools have traditional classrooms where learning takes place, however, not all learning takes place within classrooms and pupils are able to make use of other areas within the school grounds including outdoor learning spaces or other areas within the school buildings (gym hall etc).
- Q: Could you clarify if kids coming in would be part of a class?



- R: Any new pupils would form part of the school roll; would be assigned to a class; and would have access to a teacher with the same education provision as any other pupil within Renfrewshire.
- Q: Are there any plans to increase staffing as a teacher can't be in a class and breakout area at the same time?
- R: Schools are allocated staffing based on their roll. This can increase or decrease depending on the individual class structures, however, the schools staffing allocation ensures pupils are always supervised and would never be left unsupervised. The staffing allocation is transparent and is applied consistently across all Renfrewshire primary schools.
- Q: Would class sizes be bigger?
- R: The Scottish Government sets the maximum class sizes nationally and Renfrewshire's local policy ensures the class sizes meet the Scottish Government requirements. The structuring of classes is complex and numbers can vary year on year.
- Q: Have you took into consideration the 300 homes that fall within the catchment area as building will start soon?
- R: It was explained that our planning colleagues provide an annual Housing Land Audit, and this information is factored into the roll projections. Officers within both services meet regularly and if Children's Services officers have any concerns in relation to the impact a development may have, this information is passed to planning colleagues.
- Q: Is a lollipop person going to be put in as the round-about is dangerous?
- R: Safe walking routes are a priority for the service. Officers risk assess routes and things like drop off and pick up locations are very carefully considered.
- Q: Am I right in saying that every kid from that area would be bussed to school?
- R: All children are bussed from the opposite estate as no safe walking route is available. As no safe walking route to Inchinnan has been identified school transport would be provided to both schools. Traffic congestion is considered as part of the risk assessment process.
- Q: What will happen if Persimmon get to build at the hotel?
- R: This development is not being considered as part of this catchment review proposal. The council's roll projection methodology was explained and advised that Rashielea would be able to cope with this additional development should the planning application be approved.
- Q: Is it going to end up like Bishopton?
- R: It was explained that Bishopton is in a unique position with pressures from the new Dargavel Village development. The Council have a section 75 agreement with BAE as part of the planning process and a new school will be built to address the issues at Bishopton.
- Q: Your roll projection seems low?
- R: The roll projection model predicts around 49 primary pupils are expected to come from this development. While this might seem to be a relatively small number there are a number of other issues which must be considered such as internal migration within Renfrewshire and the fact that there will be children and young people living in the area who will attend early years centres and secondary schools.
- Q: How did this compare with Dargavel?
- R: The roll model is consistently applied across Renfrewshire. The number of houses and phasing changed from the initial set of data provided for Dargavel. The roll projections were updated to reflect the new data.
- Q: I heard the current capacity of Rashielea is 50% at the moment. Could you confirm the current capacity of Rashielea?
- R: The current capacity is 67%.



- Q: What is maximum capacity of Rashielea?
- R: Rashielea is a double stream school and the capacity is 434.
- Q: Where will bus stops be for the new development?
- R: The bus stops have not yet been determined. Environment and Infrastructure colleagues would be responsible for assessing the route and making recommendations.
- Q: In relation to the houses positioned nearer Sandielands within the development, would the children be required to walk the length of the development as it's a considerable distance?
- R: Environment and Infrastructure colleagues would be responsible for assessing the route and making recommendations.
- Q: I live behind the development. Will walkways be put in behind my house?
- R: We will pass this to our Planning colleagues and provide an answer in the document published from this evenings meeting. Our planning colleagues have advised that they can be contacted directly via e-mail [dc@renfrewshire.gov.uk](mailto:dc@renfrewshire.gov.uk) as they require additional personal information to be able to look into this matter further.
- Q: The water pipes are currently being installed and there are trucks which are obstructing my views?
- R: Your comments have been noted and will be passed to the relevant service.
- Q: Some parents are considering buying a Cala home. Would their children lose the right to a bus?
- R: As no safe walking route has been identified the pupils who reside within this development would qualify for school transport whether the proposal goes ahead or not.
- Q: Can Park Mains accommodate the additional pupils?
- R: Park Mains was future proofed for roll increase at the design stage. The land and infrastructure requirements are both in place should this be required.
- Q: How long would it take for an extension at Park Mains?
- R: A planning exercise involving officers from across the Council would be required to determine this.
- Q: What is the proposed occupancy without the development?
- R: This information will be provided in the document published from this evenings meeting.

Inchinnan Projections without this development are noted below:

	2019	2020	2021	2022	2023	2024
Projected roll	138	144	146	145	143	134
Projected occupancy	64%	66%	67%	67%	66%	62%

- Q: Will the extension still happen to Inchinnan Community Nursery?
- R: This proposal only considers the proposed catchment review and does not alter any planned activities. The introduction of 1140 childcare remains a key priority for the council.
- Q: My feeling is that you intend to close Inchinnan Primary School?
- R: Inchinnan Primary School is a thriving school and there are no plans to close it. Our focus is ensuring no detriment to educational outcomes for children.
- Q: For how long?
- R: Inchinnan Primary School is a thriving school and there are no plans to close it.
- Q: A large percentage of the existing Inchinnan roll is made up of placing requests. This is a desirable school?



- R: The proposal does not intend to remove parental choice and parents will still have the right to make placing request applications to any school.
- Q: If the catchment review goes ahead will Rashielea obtain funding for improvements?
- R: There are no plans within the existing SEMP for any refurbishment or upgrade to Rashielea. An explanation of how school improvements are prioritised was provided.
- Q: Will the reports in November and March be available to the public?
- R: Yes, all information will be made available. Education Scotland carry out a scrutiny role and will also visit both schools. The paper submitted to the education and children's services policy board will be available to members of the public around one week prior to the meeting.
- Q: Parents drop kids off and it can be very busy. You may wish to take account of parking facilities?
- R: It was acknowledged that drop-off and pick-up creates traffic congestion at many schools. Schools encourage children to walk where a safe walking route has been identified. The council respectfully requests that parents make positive choices when parking around schools.
- Q: Parents need to get to work and therefore choose to drop children off.
- R: Your comments have been noted.
- Q: There is a designated parking area directly across the road from Inchinnan Primary School.
- R: This requires clarification. Schools continually work with parents to ensure parking does not place any unnecessary risks on children; and minimise traffic congestion.
- Q: The parent council (Rashielea) advised that they take parking issues very seriously and have worked with nearby premises (Church of Nazarene, Beatson Brothers) who allow parking within their premises for parents to avoid parking at the school gates. The Park Mains parking has a knock-on effect for Rashielea parents.
- R: Thank you for your comments.
- Q: Does Inchinnan solely rely on placing requests?
- R: No, this is not the case.
- Q: We would rather Inchinnan Primary School rely on catchment children not placing requests.
- R: Your comments have been noted.
- Q: This is the first year Inchinnan Primary School has had 7 classes. This is the preference, not composite classes?
- R: The structuring of classes is complex and reviewed annually. Children's Services officers carry out an annual exercise which classifies the best structure available to schools based on their planned intake. Children's Services officers liaise with head teachers to ensure the best class structure is implemented locally. This varies year on year depending on numbers and composite classes will likely form part of the class structure in the future.
- Q: Should the Council not have undertaken this consultation earlier as people want to know the school catchment when purchasing houses?
- R: Point noted. The consultation timeline was agreed by board earlier this year and the timeline has been shared. Placing requests are still available to parents should the catchment review go ahead.
- Q: Could you clarify the bus arrangements for new children who move into the Cala development?
- R: Should the catchment review not go ahead, a bus to Inchinnan Primary School will be provided. Should the catchment review go ahead, a bus to Rashielea Primary School will be provided. The Council would look to utilise



existing school transport contracts given the close proximity of nearby pupils accessing the school transport bus service.

Q: Would existing children who moved to the Cala development get bussed?

R: Yes.

Q: Would it be more cost effective to build paths rather than spending money on school transport?

R: As previously stated, no safe walking route has been identified and school transport would be provided.

#### 4.2. Questions, comments and responses from online survey have been summarised under headings below:

##### 4.2.1. Buildings

###### Questions and Comments:

- Rashielea has more than enough space to accommodate more children.
- Rashielea is at 50% capacity and has plenty of space to accommodate pupils.
- Rashielea is better equipped to take the extra children.
- The rest of Abbeyfield the catchment school is Rashielea.
- Rashielea takes in a large area already.
- School roll. Additional children will increase class number. Rashielea currently has an average class size of 27, Inchinnan has an average class size of 20.
- I am against bigger class sizes in the school. It is a village school and doesn't have the capacity.
- Inchinnan does not have the size of school to cope with additional students.
- Inchinnan has a growing number of pre-school children, who will be needing space in the village school. ICC feels Inchinnan's child numbers will continue to grow in years to come and as such will need the spaces.
- Inchinnan is too small a school - would be no access for outside classroom learning.
- Inchinnan primary is a small village school that does not have capacity for the additional housing.
- Small school in Inchinnan no room for more pupils.
- The capacity in Inchinnan school including the increase in school and nursery is too great. My children will suffer especially my disabled daughter.
- The school is narrow and traditional - would feel overwhelming and crowded.
- Want Inchinnan primary to remain a small village school.
- Capacity at school. This would establish an ongoing intake at a village school ensuring its continuation as numbers could have fallen.
- Inchinnan currently are under capacity.
- The projected 49 additional pupils would put the school to above 80% capacity by 2021. This is a conservative estimate if housing developments in the local area are anything to go by.
- The school's playground has also been reduced in size to accommodate a car park.
- Currently lunchtime is in 3 sittings. The canteen area would struggle to accommodate additional children during the 45 minute lunch time.
- The new Cala development is being built as part of Erskine, not Inchinnan and therefore, the Rashielea Parent Council are in favour of these children attending our school. We are of the opinion that attending Inchinnan will exclude these pupils from community links in the area in which they live. Rashielea is currently running below capacity and we have, in the past, operated with a higher school roll than we would have after accepting these additional children. Rashielea has



the capacity, infrastructure and willingness to accept both these children, and those in the potential Persimmon development, and we are ready and eager to be their catchment school.

- Rashielea has the space required to accommodate additional pupils.

Responses:

- Renfrewshire Council's projected roll analysis demonstrates that additional pupil numbers generated from this new housing development can be accommodated comfortably within the Rashielea Primary School Building. The current occupancy level at Inchinnan Primary School is 63%. If this new housing remains zoned to the school the occupancy level could be expected to rise to circa 87%; 24% more than the current occupancy level. The current occupancy level at Rashielea Primary School is 62%. If this new housing is zoned to the school the occupancy level could be expected to rise to circa 64%. This minimal increase of 2% relates to other factors; most significant of which is that over the coming years large cohorts will leave the school and smaller numbers are expected to come in (e.g. this year's new primary 1 is 23 and this year's primary 7, which will leave in June 20, is 57).
- The impact of this future roll increase, whether in relation to internal capacity to provide sufficient spaces for the full breadth of the curriculum; opportunities for outdoor learning and social activity; or dining experiences, have been considered through this process in relation to both establishments.
- Placing request trends at Inchinnan Primary School are closely monitored and it is correct to note that having this development in the catchment would ensure continuously high class sizes. It is equally appropriate to consider that placing requests would still be granted where there is "surplus" capacity (up to a 100% occupancy level) and if the roll continued to rise this could adversely impact on the operational efficiency of the Inchinnan Primary School building.
- Class sizes are variable year on year and a classification exercise is undertaken in all schools to ensure the most efficient distribution of children across classes.
- Through this catchment review Renfrewshire Council believes that Rashielea Primary School will cope better with the potential increase in pupil numbers as it affords a greater pupil space ratio than can be achieved at Inchinnan Primary School.

#### 4.2.2. Community

Questions and Comments:

- Inchinnan community council was very surprised that IPS was the catchment school for the NorthBarr Development, which is in Erskine. There is no pathway between NorthBarr and Inchinnan, and there is nowhere for a path to be created in the future. With this in light, it is important that parents are aware that there will never be a link between NorthBarr in Erskine and the village of Inchinnan. Anyone wanting to come to the school will need to drive, use a bus, or use the existing pathways linking Erskine with parts of Inchinnan (Y-path). Inchinnan has very recently created a village Development Trust - 'To ensure the lives of Inchinnan's villagers are enhanced through the preservation and development of our woodlands and green spaces'. IDT and ICC working hand in hand to preserve the village environment and identity. Keeping traffic to safe levels, abiding by laws, providing for our children, and preserving our green spaces is what we want to achieve.
- We are a thriving school with the capacity to easily welcome and accommodate additional pupils.



- Having gone through this school I am only to aware of the Inchinnan identity that needs to be cherished and savoured. It's not just the school that will be impacted it is the community.
- Rashielea is a better option all round. It's closer for families who want to walk, safer to drive and no additional busing costs. 99% of Inchinnan villagers want the catchment to be Rashielea. The only people we hear wanting IPS as catchment are teachers.
- We currently have issues with Inchinnan Primary with the current capacity more will cause more degradation in service. Staff and Parents who have personal reasons like pay rises and new houses should reflect on what will happen to the school and the children. Having gone through this school I am only to aware of the Inchinnan identity that needs to be cherished and savoured. It's not just the school that will be impacted it is the community.
- The development is much closer to Inchinnan
- The friendship groups of the new children will be within Rashielea.

#### Responses:

- Renfrewshire Council respects the importance of community identity and the need to preserve the natural environment.
- The opportunity for children living in adjacent developments to go to school together formed part of the rationale for the proposal to revise these catchment areas.
- Consideration of safe travel routes and potential traffic congestion around the school formed part of the rationale for the proposal to revise these catchment areas and Renfrewshire Council believes that the implementation of this proposal will remove the possible adverse traffic impacts affecting the school and the wider Inchinnan community.
- While the development may be closer to Inchinnan Primary School there is no natural link to the village school at this time and there are no safe walking routes which mean that children would have to be transported through the village causing congestion in an already busy environment.

#### 4.2.3. Environment

##### Questions and Comments:

- There is already a bus for pupils from that area to Rashielea primary, no walking access to Inchinnan from Northbar therefore pupils would probably travel by car causing more unnecessary pollution which the Scottish Government is trying to avoid.
- The catchment area is Inchinnan Primary. Children could walk, cycle to school. Children would have to be bused to Rashielea. (environmental).

##### Responses:

- Renfrewshire Council must consider the impact its catchment decisions have on the environment. Walking to school, where there are safe walking routes, is always preferred however some parents will choose to drive their child to school.
- Schools work hard to challenge this situation by asking children and parents to consider if driving to school is required; this is typically taken forward through the health and wellbeing curriculum and sustainable travel planning arrangements at school level.
- It must also be acknowledged that, through its school transport policy, the Council is obliged to provide free school transport where it is required, and free school transport is required whether this catchment review is approved or not.



- It should also be noted that, from an environmental perspective, every effort is made to ensure that transport arrangements are as efficient as possible and that the transport provision is appropriately sized.

#### 4.2.4. Financial

##### Questions and Comments

- If Rashielea has the capacity to take the children, it makes financial sense for tax payers. There is a current school bus running to Rashielea; why create additional costs in an already stretched budget.

##### Response:

- Renfrewshire Council aims to provide its services in the most efficient way to ensure its resources provide best value and quality experiences for its communities.

#### 4.2.5. Learning and teaching

##### Questions and Comments:

- Inchinnan school has small class sizes and expanding these would be to the detriment of the teaching quality.

##### Responses:

- Through its quality improvement framework Renfrewshire Council supports all schools to improve and develop. All schools are resourced to provide the best possible outcomes for children regardless of class sizes.
- If the roll increased beyond 151 pupils, and this was sustained, Inchinnan Primary School would be entitled to a depute headteacher post.

#### 4.2.6. Safety and transport

##### Questions and Comments:

- Already well-established bus travel from area to school.
- Illegal use of the bus link is already a big problem for Inchinnan villagers, and we feel more traffic means more speeding people using the 'short cut'!
- Inchinnan is already very busy at school drop off times as there is insufficient parking at the school.
- No direct access.
- Parking at IPS is already a safety risk as there is not enough parking for existing parents. If the Cala families were to come to IPS they would either need to be bused or their parents would need to drive, which would result in even more traffic and risk.
- Parking. Already there are parking issues at the school. The current parking across from the school is too busy.
- Roads are not suitable - bus lane could cause accidents.
- The bus gate would potentially be abused additional traffic making their way to Inchinnan PS causing a health and safety risk
- The no entry was put in place after the death of a very close school friend, If the 200 plus houses are moved to Inchinnan this risks the volume and the necessity for the road to remain no entry.
- The road is already too busy and not enough parking.
- The road/parking infrastructure couldn't cope with additional traffic associated with additional pupils.



- There is no direct access to Inchinnan from the new development which will result in increased traffic leaving Erskine each morning.
- Too much traffic into Inchinnan.
- Traffic through Inchinnan will increase due to the lack of footpath from the new houses to the school. Safety of the children should be paramount.
- Visually Impaired Daughter, moved to Inchinnan away from the traffic and to be in a safer environment with less traffic. Unfortunately, Inchinnan has not got the infrastructure to manage the increase in traffic.
- Will need another bus to school.
- The access road to enter the new development is in Erskine not Inchinnan therefore is part of Erskine.
- There is already a bus stop and space on the Rashielea buses for the additional children.
- If the catchment school is Inchinnan any placing requests to Rashielea would mean school bus would not be given.
- At the meeting on Wednesday the reason given for the review was the issue of a bus parked on the main road outside Inchinnan PS. But this is a road which is closed at one end to cars etc. It is much less busy than Rashielea Avenue.
- I attended the meeting at Rashielea on Wednesday night. There was mention that there was currently no safe route to Inchinnan PS from the new development. But this is not true. There is a path which runs on the same side of the road as the development from the back of Sandielands Avenue off Florish road. There is then a path from Sandielands Avenue through to Inchinnan. It would need to be upgraded slightly with trees etc being cut back and lighting improved. Children would only need to cross 1 quiet road across the middle of Sandielands Avenue. This is a much safer route than if kids were to walk or cycle to Rashielea. My children use Inchinnan Church for scouts/cubs and frequently walk this path. It's a 10-minute walk tops.
- Safety - kids being bussed or dropped off by parents will increase the traffic down Rashielea Avenue.
- There is a dedicated car park across from Inchinnan PS for parents who drive their kids to school. There are no such facilities at Rashielea PS.
- Future capacity at Park Mains will continue to be stretched because of Bishopton school children from Dargavel. If these new homes were catchment for Inchinnan, then choice of high school would be Renfrew High, a better distribution.
- The traffic chaos and gridlock at Rashielea Rd, with high school traffic at Park Mains cannot be overlooked. Also, there will continue to be a lot more cars and the road layout cannot cope. This is also a bus route. This proposal is not safe.
- Rashielea would need a bus.
- Traffic chaos - Rashielea already can be blocked by parent cars. It is a dead-end road - there is a real safety concern for children.
- Walking around this school I have often said it's an accident waiting to happen. Our estate at Garnieland was to have its own school in the plans. It's been a bit of a joke. We have to be squeezed in.
- Inchinnan does not have the capacity for buses to transport pupils to school and make a stop safely. The implications of not having a bus bay available would cause huge issues to safety of pupils walking to school, getting on and off of the buses safely.
- Inchinnan currently has a bus lane that divides it from Erskine. The proposed housing development is a 4 mile drive to Inchinnan Primary. The increased traffic associated with these houses would have a detrimental impact on village life. Residents of the new development may be tempted to take a short cut through



the bus lane to avoid congestion at the red smiddy roundabout and roads to the school.

- The Rashielea school bus already collects from this area.
- There is no safe walking route to Inchinnan.

Responses:

- Consideration of safe travel routes; children's safety accessing the school grounds; and potential traffic congestion around both Primary Schools formed part of the rationale for the proposal to revise these catchment areas.
- As there is no safe walking route, free school transport would be available to pupils living in this area whether it was zoned to Inchinnan or Rashielea Primary Schools.
- The possibility of exacerbating traffic congestion outside Inchinnan Primary School is part of the reason for the catchment review but it is not the only reason. There are more opportunities to manage traffic congestion at Rashielea Primary School as there are more areas close to the school where parents can park safely and walk children to the school grounds; there is no "designated" parent parking area available at Inchinnan Primary School.
- The comment regarding walking routes made at the public meeting was, that in its current state, the walking route is not safe, and investment would be required to upgrade the route to make it safe. As matters stand transport would have to be provided whether the children were zoned to either Inchinnan or Rashielea Primary Schools.
- Bishopton and Dargavel lie within the Park Mains catchment area and are geographically closer to this school. There is therefore no meaningful rationale to amend this arrangement.
- The Council constantly reviews its transport contracts and, if required because of increased pupil numbers from this development, additional buses could be needed.
- Free school transport is not provided in relation to placing requests.

#### **4.3 Summary of questions, comments and responses from children at Rashielea Primary School:**

- We're welcoming and a good example to others therefore any new pupils would settle in well;
- We would have more friends to make;
- We would have more people to get to know;
- New students would be good for our school;
- We would be able to learn from each other, especially if they had been in different schools before coming to us;
- Would bring new talent to the school;
- We have the space to have more pupils; and
- Buses come to our school already.

R: Renfrewshire Council welcomes the positive comments from the children of Rashielea Primary School and will ensure appropriate feedback is provided in relation to the Council's decision on this catchment review.

#### **4.4 Summary of questions, comments and responses from children at Inchinnan Primary School**



- The new pupils would get the opportunity to come to a good school;
- It would be nice to have new friends;
- More friends be happy;
- Good to have friends from the street where you live;
- Good to welcome more pupils into our school; and
- Good to have a mixture of families in the school.

R: Renfrewshire Council welcomes the positive comments from the children of Inchinnan Primary School and will ensure appropriate feedback is provided in relation to the Council's decision on this catchment review.



**THIS IS A CONSULTATION DOCUMENT**  
**Proposals relating to:**

**The revision of catchment areas affecting Inchinnan and Rashielea Primary Schools**

**1. Introduction**

- 1.1 The Schools (Consultation) (Scotland) Act 2010 (“the 2010 Act”) makes provision for the consultation process that is to apply re: various proposals made by Councils for schools. The principal purpose of the 2010 Act is to provide strong, accountable statutory consultation practices and procedures that local authorities must apply to their handling of all proposals for school closures and other major changes to schools. These consultation processes are expected to be robust, open, transparent and fair, and seen to be so. They are also expected to be consistent across Scotland. The 2010 Act applies to a wide range of changes to the school estate, referred to as “relevant proposals”.
- 1.2 This report seeks approval to consult on the proposal to revise catchment arrangements affecting Inchinnan and Rashielea Primary Schools. In accordance with Section 2 and Schedule 1, Para. 4 of the 2010 Act, a proposal to vary any admission arrangements for a school, including a proposal to alter or establish the catchment area of a school, is a relevant proposal for the purposes of the 2010 Act. This proposal is therefore a relevant proposal for the purposes of the 2010 Act.
- 1.3 This is the proposal paper, produced by the Council in accordance with the terms of Sections 1 and 4 of the 2010 Act. This proposal paper must:
- a) set out the details of the relevant proposal;
  - b) propose a date for implementation of the proposal;
  - c) contain the educational benefits statement in respect of the proposal;
  - d) refer to such evidence or other information in support of (or otherwise relevant in relation to) the proposal as the Council considers appropriate; and
  - e) give a summary of the process provided for in the 2010 Act.

The Council must do the following:

- a) publish this proposal paper in electronic and printed form;
- b) make the paper, and (so far as practicable) a copy of any separate documentation that it refers to, available for inspection at all reasonable times and without charge:
  - (i) at its head office and on its website; and



- (ii) at any affected school or at a public library or some other suitable place within the vicinity of the school.
  - c) provide without charge the information contained in this proposal paper:
    - (i) to such persons as may reasonably require that information in another form; and
    - (ii) in such other form as may reasonably be requested by such persons.
  - d) advertise the publication of the proposal paper by such means as it considers appropriate.
- 

## **2. Correction of the proposal paper**

- 2.1 Where, during the consultation period, the Council has been notified of an alleged omission of relevant information from a proposal paper or an alleged inaccuracy in a proposal paper the Council must proceed as follows:
  - a) determine if relevant information has (in its opinion) been omitted and whether there is (in fact) an inaccuracy;
  - b) inform the notifier of its determination under paragraph (a), and the reasons for that determination;
  - c) inform the notifier as to the action (if any) it is taking and of the reasons why it is, or is not, taking such action; and
  - d) invite the notifier to make representations to the Council if the notifier disagrees with the Council's determination under paragraph (a) or its decision as to whether to take action.
- 2.2 Where the notifier makes further representation under paragraph 2(d) above, the Council may make a fresh determination as to whether relevant information has been omitted or there is (in fact) an inaccuracy and the Council may make a fresh decision as to whether to take action. The Council must inform the notifier if it makes a fresh determination referred to above, or if it makes a fresh decision as to whether to take action.
- 2.3 Where, having been notified by another person as described above, the Council determines that:
  - a) relevant information has been omitted from the proposal paper, or
  - b) there is (in fact) an inaccuracy in the proposal paper; and
  - c) where the Council discovers, during the consultation period that relevant information has been omitted from a proposal paper or discovers an inaccuracy in a proposal paper, the Council must proceed as follows:



- 2.4 Where the information that has been omitted or the inaccuracy relates to a material consideration relevant to the Council's decision as to implementation of the proposal, it must:
- (i) publish a corrected proposal paper,
  - (ii) give revised notice in accordance with the 2010 Act and
  - (iii) send a copy of the corrected paper to Education Scotland, or
  - (iv) issue a notice to the relevant consultees and Education Scotland providing the omitted information or, as the case may be, correcting the inaccuracy, and, if the Council considers it appropriate, extending the consultation period by such period as is reasonable by reference to the significance of the information provided or, as the case may be, the nature of the correction.
- 2.5 Where the information that has been omitted or the inaccuracy does not relate to a material consideration, the Council may, but is not obliged to, take steps (i)-(iii) or (iv) described above, and may also take no further action, except to report the inaccuracy/omission as required by the 2010 Act in the consultation report, which is referred to in more detail below.
- 2.6 Where, after the end of the consultation period, the Council issues a notice to the relevant consultees and Education Scotland providing the omitted information or correcting the inaccuracy, that notice may, instead of extending the consultation period, specify such further period during which representations may be made on the proposal as is reasonable by reference to the significance of the information provided or, as the case may be, the nature of the correction. Any such further period is to be treated as part of the consultation period for the purposes of the 2010 Act.
- 

### **3. Consultation arrangements**

- 3.1 As confirmed above, the present proposal is a relevant proposal for the purposes of the 2010 Act, and therefore the Council will adhere to the consultation process in the 2010 Act.
- 3.2 This consultation document provides background information to the catchment review. It details the proposal and indicates a timeframe for implementation should the proposal be approved.
- 3.3 This consultation document also includes the Council's Educational Benefits Statement.
- 

### **4. Rationale for catchment review**

- 4.1 New housing is currently under development within the catchment area of Inchinnan Primary School. However, this development is adjacent to an



existing development which is zoned to Rashielea Primary School. There are currently no house builds completed.

- 4.2 Both developments are located in the general vicinity of Florish Road with the existing development to the North of the road and the new development to the South.
- 4.3 As the catchment boundary line between the two schools runs along this road a catchment review is required to rezone the new housing development from Inchinnan Primary School to Rashielea Primary School; thereby zoning all non-denominational primary school pupils in this area to Rashielea Primary School.
- 4.4 It is anticipated that the new housing development could generate approximately 49 additional pupils over a 6 year period. The undernoted table demonstrates that there is no detrimental impact to either school as a result of this catchment review, however, it also shows that the increased number of pupils is more comfortably accommodated within Rashielea Primary School.

<b>Inchinnan Primary School</b>	<b>2019</b>	<b>2020</b>	<b>2021</b>	<b>2022</b>	<b>2023</b>	<b>2024</b>
Projected roll with new development	147	162	173	181	188	183
Percentage occupancy level	68%	75%	80%	83%	87%	84%

<b>Rashielea Primary School</b>	<b>2019</b>	<b>2020</b>	<b>2021</b>	<b>2022</b>	<b>2023</b>	<b>2024</b>
Projected roll with new development	288	272	266	263	267	279
Percentage occupancy level	66%	63%	61%	61%	62%	64%

- 4.5 As there is sufficient accommodation within Rashielea Primary School to accommodate the number of pupils generated from this new housing development and pupils living in the existing Rashielea Primary School area, it is recommended that the boundary anomaly be addressed through a formal consultation to revise catchment arrangements affecting Inchinnan Primary School and Rashielea Primary School.
- 4.6 If approved, this catchment alteration would be implemented in April 2020.
- 4.7 Provision for denominational primary pupils will remain as is, within St Anne's Primary School catchment. There is also no change to secondary provision these will remain as Parkmains High School and Trinity High School.

---

## **5. Educational benefits statement**

- 5.1 Under the 2010 Act the Council must prepare an educational benefits statement (EBS) in accordance with Sections 1 and 3 of the 2010 Act.
- 5.2 The EBS must include the following:



- a) the Council's assessment of the likely educational effects of a relevant proposal (if implemented) on:
  - (i) the pupils of any affected school;
  - (ii) any other users of the school's facilities;
  - (iii) any children who would (in the future but for implementation) be likely to become pupils of the school; or
  - (iv) the pupils of any other schools in the Council's area,
- b) the Council's assessment of any other likely effects of the proposal (if implemented),
- c) an explanation of how the Council intends to minimise or avoid any adverse educational effects that may arise from the proposal (if implemented),
- d) a description of the educational benefits which the Council believes will result from implementation of the proposal (with reference to the persons whom it believes will derive them), as well as the Council's reasons for coming to those beliefs.

5.3 The following paragraphs detail the Council's Educational Benefits Statement:

5.3.1 There are currently no house builds completed, therefore there are no pupils currently affected. If however, at a later date any pupils are affected by this catchment review they would be entitled to continue attending the schools they are currently in. However, Children's Services would provide transition support to any pupils opting to change school as a result of this proposal.

5.3.2 Pupils living in affected addresses would be entitled to continue attending Inchinnan Primary school and if they are entitled to free school transport, in line with the Council's transport policy, then this entitlement would also continue.

Siblings of those pupils attending Primary school would be entitled to attend the school with their sibling as long as their sibling is registered in the school when they enrol.

Free school transport for new primary 1 pupils would only be provided in instances where the pupil enrolls in the school at a time when their sibling still attends the school and where that sibling is entitled to free school transport.

5.3.3 Renfrewshire Council's quality improvement framework supports all schools to improve and develop. Inchinnan Primary School and Rashielea Primary School produce annual standards and quality reports which demonstrate progress towards their agreed educational objectives through the efficient and prudent use of resources. Both schools have well developed self-evaluation and school improvement planning procedures which are informed by the whole school community and reviewed through the Council's quality improvement visits which are aligned to the quality indicators identified in How Good is Our School 4 (HGIOS4).



- 5.3.4 This catchment review addresses a geographical anomaly which will allow all non-denominational pupils living in this new housing development the opportunity to attend the same non-denominational school as neighbouring developments.
- 5.3.5 In respect of accommodation, there is no detrimental impact to either school as a result of this catchment review. However, it is evident that the increased number of pupils is more comfortably accommodated within Rashielea Primary School.
- 5.3.6 Both schools deliver the full breadth of the curriculum. They provide spaces for teacher directed learning; breakout areas for independent or small group learning; and they facilitate the range of learning experiences necessary for the development of skills. This proposal will assist with effective class organisation models to support learning and teaching.
- 5.3.7 Both schools have sufficient playground and social gathering areas which provide for different kinds of play and easy access to outdoor learning opportunities. Garden areas are also provided to enhance pupil participation in outdoor education; further supporting learning about the natural environment.
- 5.3.8 Both schools are bright, naturally ventilated environments. They provide active and energetic learning opportunities which enhance the wellbeing of all users. Nurture and quiet spaces are also provided to support the emotional wellbeing of pupils with additional support needs in both schools.
- 5.3.9 Both schools have sufficient dining and PE facilities which are designed to meet the needs of the school community and both buildings are compliant with the provisions of the Equality Act (2010).
- 5.4 Our assessment of any other likely effects of the proposal (if implemented).

As is the case in any consultation of this scale, there may be those who perceive their situation to be affected positively, those who perceive the changes as negatively affecting their situation, and those for whom no perceived change is anticipated.

For example, a child who currently attends Inchinnan primary school who has siblings who may wish to attend this school in the future may have concerns; if the proposal goes ahead and they are deemed to now be living in the Rashielea catchment area. These families would neither be advantaged nor disadvantaged as provision is being made for them to attend, so long as siblings are in attendance at the time of enrolment.

- 5.5 How we would intend to minimise or avoid any adverse effects that may arise from the proposal (if implemented).

A right for siblings of those affected by the change has been included. That is, a child who attends Inchinnan primary school currently and has a sibling who wishes to attend in the future are being afforded provision to do so; should the proposal be agreed.



- 5.6 The benefits, which we believe, would result from implementation of this proposal.

In addition to the benefits noted in 5.3.1 – 5.3.9 above, Children's Services believe that reviewing catchment areas would enable the Council to plan more effectively and robustly as the challenge of rising rolls within the authority continues to emerge.

---

## **6. Impact on schools and their communities**

- 6.1 Catchment review forms part of the Council's School Estate Management Planning process and equality impact assessment is central to this approach.
- 6.2 The recommendations contained within this report will be assessed in relation to their potential impact on equalities and human rights as part of the consultative process.
- 6.3 There is no impact on community council boundaries.
- 6.4 Both schools will have capacity to serve their communities.
- 

## **7. Involvement of Education Scotland**

- 7.1 A copy of this proposal has been sent to Education Scotland.
- 7.2 At the end of the formal consultation period Children's Services will send Education Scotland the following:
- a) a copy of all relevant written representations that are received from any person during the consultation period;
  - b) a summary of any oral representations made by any person during the public meeting; and
  - c) a copy of any other relevant documentation, as available and so far, as practicable.
- 7.3 Education Scotland will provide the Council with a report on the educational aspects of this proposal. This report will be submitted to the Council no later than 3 weeks after Children's Services have sent them all of the representations and documents noted above, or such longer period as the Council may agree with Education Scotland.
- 7.4 In preparing their report, Education Scotland may visit establishments affected by the proposal and may make reasonable enquiries of such persons (both in the in the establishments and outwith) as they consider appropriate.
- 

## **8. Consultation report**



- 8.1 After receiving the report from Education Scotland, Children's Services will review the proposal having regard (in particular) to the following:
- a) written representations received by the Council from any person during the consultation period;
  - b) oral representations received by the Council from any person at the public meeting; and
  - c) the report provided by Education Scotland.
- 8.2 Thereafter the service will prepare a consultation report for consideration by the education and children's services policy board.
- 8.3 The consultation report will contain the following:
- a) a record of the total number of any written representations made to the Council (by any person) on the proposal during the consultation period;
  - b) a summary of:
    - (i) those written representations; and
    - (ii) any oral representations made to it (by any person) at the public meeting.
  - c) a statement of the Council's response to:
    - (i) those written and oral representations; and
    - (ii) Education Scotland's report.
  - d) a copy of that report
  - e) a statement explaining how the Council complied with its obligation to review the relevant proposal as described above.
- 8.4 The consultation report will also include the following:
- a) details of any omission/inaccuracy in the proposal paper, or (as the case may be) any alleged omission/inaccuracy, (including a statement of the Council's opinion on it);
  - b) a statement of the action taken in respect of the omission or inaccuracy, or (as the case may be) the alleged omission/inaccuracy, or, if no action has been taken, of that fact (and why); and
  - c) any representations made to the Council where the person who made the notification re: omission/inaccuracy disagreed with the Council's determination as to whether there had been an omission/inaccuracy, or its decision as to whether to take action.
- 8.5 The Council must:



- a) publish the consultation report in both electronic and printed form;
- b) make the report available for inspection at all reasonable times and without charge:
  - (i) at its head office and on its website; and
  - (ii) at any affected school or at a public library or some other suitable place within the vicinity of the school.
- c) provide without charge the information contained in the consultation report:
  - (i) to such persons as may reasonably require that information in another form; and
  - (ii) in such other form as may reasonably be requested by such persons.
- d) inform any person who during the consultation period made written representations on the relevant proposal of the publication of the consultation report; and
- e) advertise the publication of the consultation report by such means as it considers appropriate.

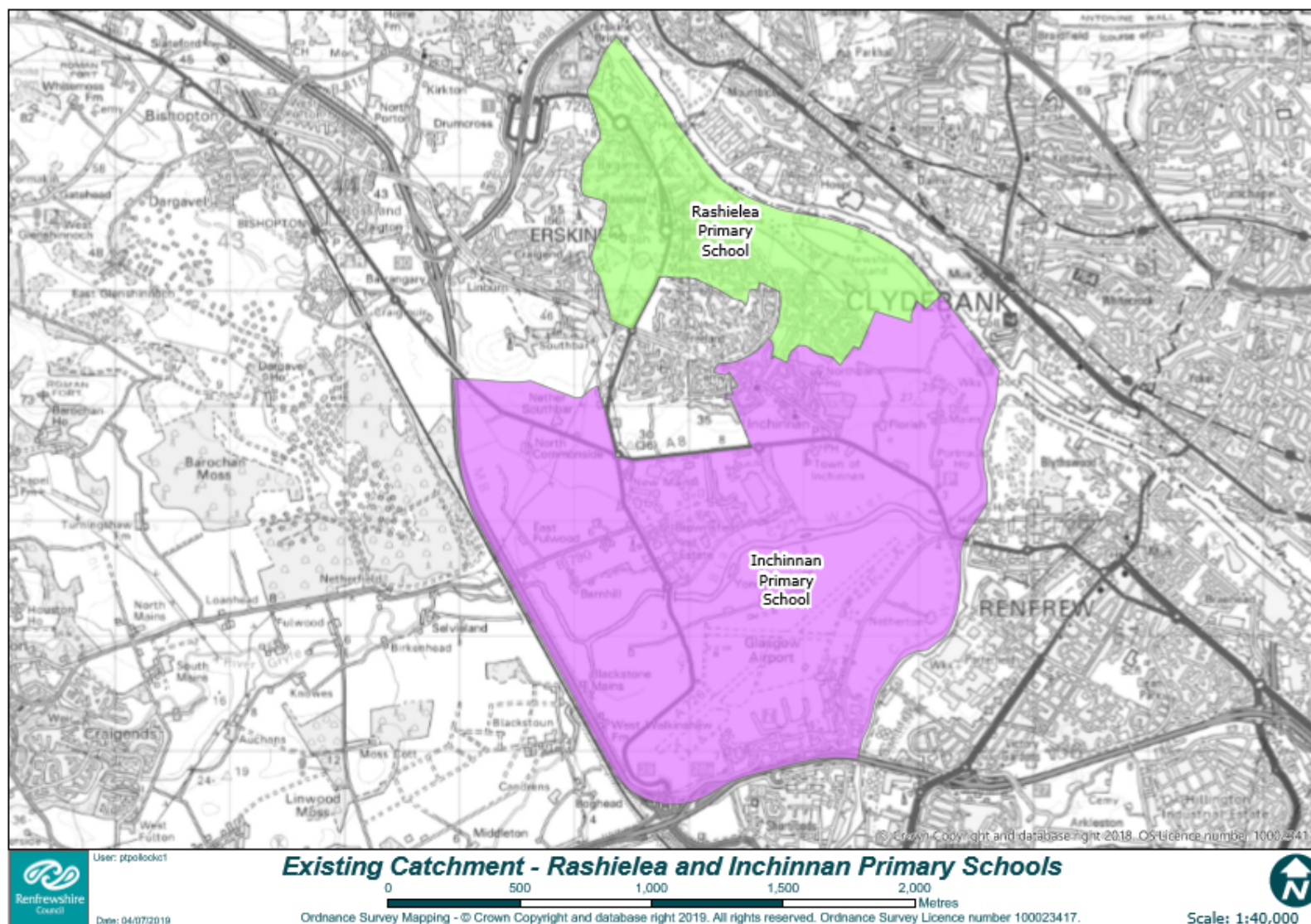
8.6 The time line and summary of the consultation process in respect of this proposal is set out below:



Activity	Date
Approval for consultation sought from Education and Children's Services policy board	22 August 2019
<p>Consultation document to be issued outlining the proposal to:</p> <ul style="list-style-type: none"> <li>the parent council or combined parent council of any affected schools;</li> <li>the parents of the pupils at any affected school;</li> <li>the parents of any children expected by the education authority to attend any affected school within 2 years of the date of publication of the proposal paper;</li> <li>the pupils at any affected school (in so far as the education authority considers them to be of a suitable age and maturity);</li> <li>the staff (teaching and other) at any affected school;</li> <li>any trade union which appears to the education authority to be representative of the staff (teaching and other) at any affected school;</li> <li>the community council (if any);</li> <li>the community planning partnership for the area of the local authority in which any affected school is situated and any other community planning partnership that the education authority considers relevant;</li> <li>any other education authority that the education authority considers relevant; and</li> <li>any other community groups using any of the affected schools.</li> </ul>	2 September 2019
Advert to advise of public consultation meeting and the commencement of the formal consultation period issued via local press.	2 September 2019
<ul style="list-style-type: none"> <li>Public consultation meeting held to consult with affected community in Rashielea Primary School at 7.00pm; and</li> <li>Questionnaire to go live on the Council website.</li> </ul>	11 September 2019
Public consultation period ends 6 weeks after the date of the public meeting. The total period excludes any school holidays or in-service days.	4 November 2019
Report to Education Scotland on outcome of consultation.	25 November 2019
Response from Education Scotland on outcome of consultation.	17 December 2019
Consultation response report (including Education Scotland response) presented to Education and Children's Services policy board meeting stating consultation outcomes and making final recommendation.	March 2020
Copy of proposal paper and consultation response report sent to Scottish Ministers within 6 days of education and children's services policy board approval.	March 2020

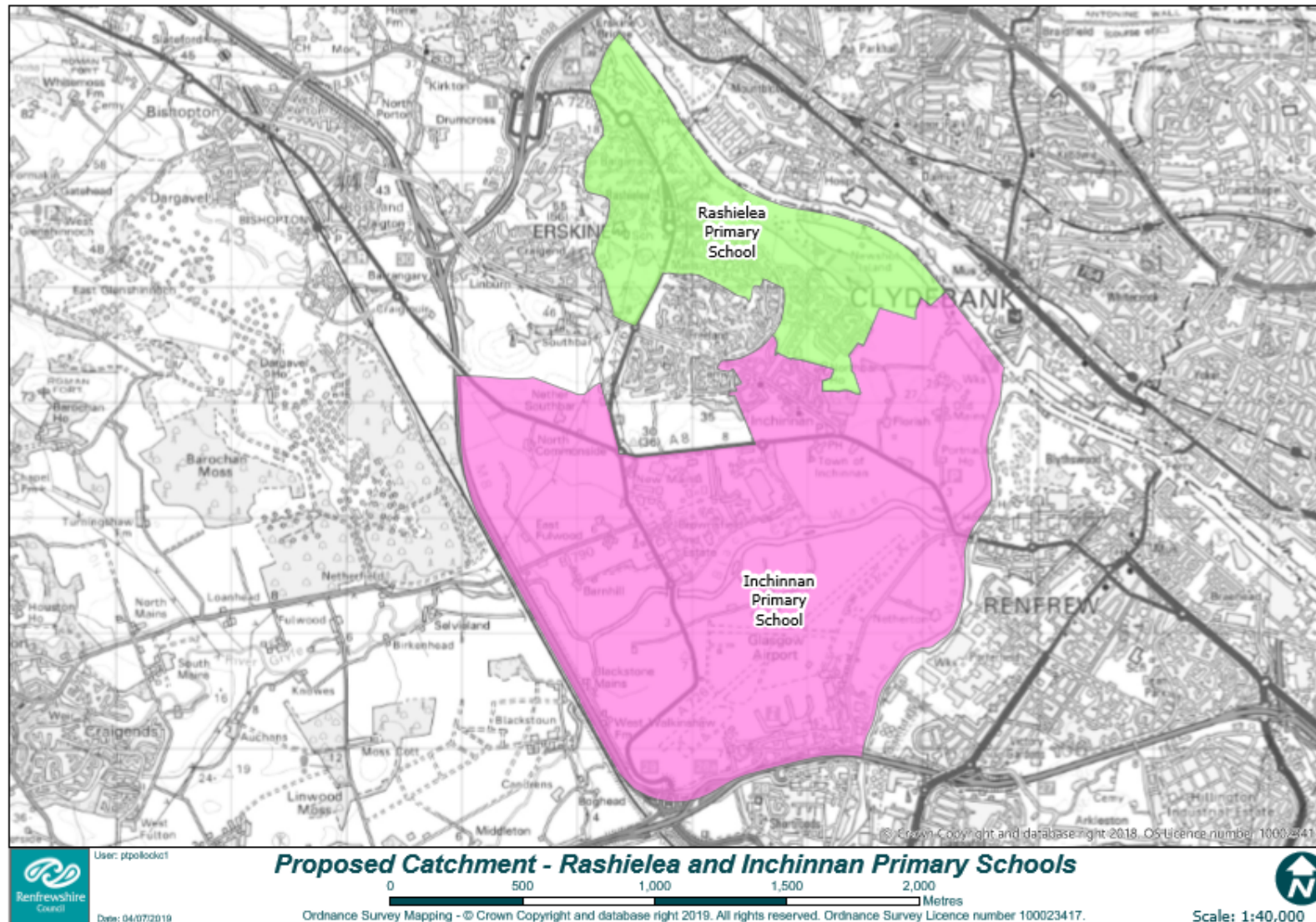


**Existing Catchment – Rashielea and Inchinnan Primary Schools**





## Proposed Catchment – Rashielea and Inchinnan Primary Schools





## Appendix 4

**Catchment Review:**        **Streets Affected – Inchinnan Primary School with  
Rashielea Primary School**

### **Addresses allocated at July 2019**

Berchanshaw
Cairnmaith
Inchbrae
Inchmeall
Pettcairn
Templar Crescent
Teucheen Circle

**Note: Construction has yet to commence at this development and more addresses may be added to this list, which fall within the boundary of this development.**







# **Equality Impact Assessment relating to:**

## **Catchment Review: Inchinnan and Rashielea Primary Schools**

Officer and department responsible for completing the assessment.	Ian Thomson, Children's Services
Name of policy, strategy or project.	Catchment review affecting Inchinnan Primary School and Rashielea Primary School
What is the main purpose or aims of the policy, strategy or project?	To address a geographical anomaly in relation to the catchment boundary between two schools. By adjusting the catchment areas all non-denominational pupils living in new housing developments in the vicinity of Florish Road will be entitled to attend the same primary school.
Who will be the beneficiaries of the policy/strategy/project?	This review would specifically affect the Inchinnan and Rashielea school communities.
Has the policy/strategy/project been explained to those it might affect directly or indirectly?	Approval to consult on this proposal was authorised by the education and children's services policy board on August 2019. The consultation adhered to the Schools (Consultation) (Scotland) Act 2010. It commenced on 2 September 2019 and closed on 4 November 2019. Equalities questionnaires were issued at the public meeting held on 11 September 2019 and returns will be reviewed and responded to as part of the Council's report on the responses to the consultation.
Have you consulted on the policy?	As above.

Complete the following table and give reasons/comment where:

- a) The policy/strategy/project could have a positive impact on any of the equality target groups or contributes to promoting equality, equal opportunities and improving relations with equality target groups.
- b) The policy/strategy/project could have a negative impact on any equality target groups. (If the impact is high a full EIA should be completed)

Equality group	Positive impact		Negative impact		Reason/comment
	High	Low	High	Low	
Race		✓		✓	
Sex		✓		✓	
Disability		✓		✓	Appropriate transport arrangements are based on individual need.
Religion / Belief		✓		✓	
Sexual Orientation		✓		✓	
Age		✓		✓	



Gender Reassignment		✓		✓	
Marriage and Civil Partnership		✓		✓	
Pregnancy and Maternity		✓		✓	



# Schools (Consultation) (Scotland) Act 2010

## Report by Education Scotland addressing educational aspects of the proposal by Renfrewshire Council to review the catchment arrangements affecting Inchinnan Primary School and Rashielea Primary School.

### 1. Introduction

1.1 This report from Education Scotland has been prepared by Her Majesty's Inspectors of Education (HM Inspectors) in accordance with the terms of the Schools (Consultation) (Scotland) Act 2010 ("the 2010 Act"). The purpose of the report is to provide an independent and impartial consideration of Renfrewshire Council's proposal to review catchment arrangements affecting Inchinnan Primary School and Rashielea Primary School. Section 2 of the report sets out brief details of the consultation process. Section 3 of the report sets out HM Inspectors' consideration of the educational aspects of the proposal, including significant views expressed by consultees. Section 4 summarises HM Inspectors' overall view of the proposal. Upon receipt of this report, the Act requires the council to consider it and then prepare its final consultation report. The council's final consultation report should include this report and must contain an explanation of how, in finalising the proposal, it has reviewed the initial proposal, including a summary of points raised during the consultation process and the council's response to them. The council has to publish its final consultation report three weeks before it takes its final decision.

#### 1.2 HM Inspectors considered:

- ☐ the likely effects of the proposal for children and young people of the schools; children likely to become pupils within two years of the date of publication of the proposal paper;
- ☐ any other likely effects of the proposal;
- ☐ how the council intends to minimise or avoid any adverse effects that may arise from the proposal; and
- ☐ the educational benefits the council believes will result from implementation of the proposal, and the council's reasons for coming to these beliefs.

#### 1.3 In preparing this report, HM Inspectors undertook the following activities:

- ☐ attendance at the public meeting held on 11 September 2019 in connection with the council's proposals;
- ☐ consideration of all relevant documentation provided by the council in relation to the proposal, specifically the educational benefits statement and related consultation documents, written and oral submissions from parents and others; and
- ☐ visits to the site of Inchinnan Primary School and Rashielea Primary School including discussion with relevant consultees.

### 2. Consultation process

2.1 Renfrewshire Council undertook the consultation on its proposal(s) with reference to the Schools (Consultation) (Scotland) Act 2010.



2.2 The statutory consultation period ran from 2 September 2019 until the 4 November 2019. A public meeting, advertised in the local press, was held on the 11 September 2019 in Rashielea Primary School. The consultation document was available to stakeholders including those who attended the public meeting, both parent councils, elected members and MSPs and MPs for the Renfrewshire area. Copies of the consultation document were available at local libraries and on the council website.

2.3 The public meeting was attended by 23 members of the public. In addition, 35 responses were received through the online survey or questionnaires and two general enquiries were received. Of the 35 responses to the online survey or questionnaire 27 were from parents or carers. Of the 35 responses 27 were for the proposal and eight against. The main areas of concern raised through the comments and from stakeholders who met with HM Inspectors were about the impact on Inchinnan Primary School. A few stakeholders were concerned about the possibility of increased numbers should the proposal not go ahead, whilst a few were concerned about sustaining the school's roll if the proposal does go ahead. A few stakeholders raised concerns about routes to school and the potential traffic implications for both sites.

### **3. Educational aspects of proposal**

3.1 The council outlines how the proposal to change the catchment areas will not make substantial changes to existing education benefits at either school. The proposal outlines that either school could accommodate the likely number of children from the housing development that will be built. With both sites having sufficient indoor and outdoor learning space. However, given the projected roll for Rashielea Primary School in the future and that it has under-used classroom space children will be more easily accommodated in that school. The council believes the change to the catchment area will also allow for children who will live in the housing development, once it is built, to attend the same school as those living on an existing, neighbouring housing estate. Overall, the educational benefits of the proposal though not substantial are positive. HM Inspectors agree with a few stakeholders who would have welcomed the development of a safe walking or cycling route from the new housing area to both primary schools. This could have a positive benefit on children's health and wellbeing.

3.2 The majority of parents who responded, including those who met HM Inspectors, agree with the proposal to change catchment boundaries. In both schools, parents were concerned that should their school gain additional pupils that car drop-off arrangements would require to be strengthened to ensure safety. Parents at Inchinnan had mixed views. They have concerns about how well their school could accommodate the potential increase in numbers should the proposal not go ahead. However, alongside other stakeholders from the school, they could see potential benefits to school planning that would result from a smaller number of pupils coming through placing requests. Currently, just over half of the school roll is made up of placing requests. Pupils in both schools were positive about welcoming any new pupils into their school.

3.3 Stakeholders are positive about existing links between schools including Rashielea and Inchinnan Primary Schools, in the Park Mains Secondary school cluster. Overall, stakeholders are confident that local schools will continue to work together to provide appropriate learning opportunities whether or not the proposal is approved. Parents welcome that the proposal outlines the right for existing pupils continue to attend their current school and for younger siblings to attend that school so long as their older sibling is in attendance at time of enrolment.



## **4. Summary**

Overall, Renfrewshire Council's proposal to review the catchment area of Rashielea Primary School and Inchinnan Primary School offers potential educational benefit by allocating an area where a new housing development will be built to the school site better able to accommodate any increased roll that results.

**HM Inspectors**  
**December 2019**