

Notice of Meeting and Agenda Local Partnership - Renfrew

Date	Time	Venue
Thursday, 28 March 2019	18:00	Renfrew Town Hall, Renfrew Cross, Renfrew, PA4 8LJ

Membership

Diane Booth (Our Place Our Families): Councillor Bill Brown: Samantha Gillan (Renfrew YMCA): Councillor Edward Grady: David Hoey (Renfrew Burgh Band): Councillor Lisa-Marie Hughes: Thomas Johnston (Renfrew Football Club): Ramsay MacLennan (30 Acres): Councillor Cathy McEwan: Councillor Jim Paterson: Callum Reid (Renfrew Community Council): Roberta Robertson (Renfrew Development Trust): Councillor Jane Strang:

Councillor John Shaw (Chair)

Members of the Press and Public

Members of the press and public wishing to attend the meeting should report to the reception where they will be met and directed to the meeting.

Further Information

This is a meeting which is open to members of the public.

A copy of the agenda and reports for this meeting will be available for inspection online at <http://renfrewshire.cmis.uk.com/renfrewshire/CouncilandBoards.aspx>
For further information, please either email democratic-services@renfrewshire.gov.uk or telephone 0141 618 7112.

Items of business

Apologies

Apologies from members.

Declarations of Interest

Members are asked to declare an interest in any item(s) on the agenda and to provide a brief explanation of the nature of the interest.

1 Welcome and Introductions

2 Appointment of Vice-Chair

Verbal report by Chief Executive.

3 Minute of Previous Meeting

1 - 4

Minute of previous meeting held on 6 February 2019.

4 Code of Conduct

Head of Corporate Governance to report.

5 Key Local Priorities

5 - 16

Local profile attached.

6 Local Partnership - Future Arrangements

17 - 18

Report by Chief Executive.

Minute of Meeting

Local Partnership - Renfrew

Date	Time	Venue
Wednesday, 06 February 2019	13:00	Corporate Meeting Room 1, Council Headquarters, Renfrewshire House, Cotton Street, Paisley, PA1 1AN

PRESENT

Councillor Bill Brown: Councillor Lisa-Marie Hughes: Councillor Cathy McEwan: Councillor Jim Paterson: Councillor John Shaw: Councillor Jane Strang: and Mr Callum Reid (Renfrew Community Council).

CHAIR

Councillor Shaw, Chair, presided.

IN ATTENDANCE

L McIntyre, Head of Policy & Commissioning, A Armstrong-Walter, Strategic Partnerships & Inequalities Manager and S Graham, Partnership Manager (all Chief Executive's); A MacArthur, Head of Finance (Lead Officer) and C MacDonald, Senior Committee Services Officer (all Finance & Resources).

ALSO IN ATTENDANCE

K Miller, Engage Renfrewshire.

APOLOGIES

Councillor Edward Grady.

DECLARATIONS OF INTEREST

There were no declarations of interest intimated prior to the commencement of the meeting.

1 **APPOINTMENT OF COMMUNITY REPRESENTATIVES TO THE RENFREW LOCAL PARTNERSHIP**

The Convener intimated that the Over 60s Club had expressed an interest in becoming a community representative however, as their application had not been received the Group would be withdrawn from the nomination process.

Thereafter, there was submitted a report by the Chief Executive relative to the appointment of community representative to vacant positions within the Local Partnership.

The report advised that in terms of the decision taken at the meeting of the Council held on 27 September 2018 membership of each Local Partnership would comprise of an equal number of elected members from Renfrewshire Council and community representatives, with the standing members being those elected members who represented wards within the Local Partnership area and representatives of active community councils in the area. The report listed seven elected members who were eligible for membership together with the representative for Renfrew Community Council, being the active community council in the area.

Details of eight applicants who had expressed an interest in providing a community representative to sit on this Local Partnership were listed within the report. Criteria to support standing members to determine the appointment of community representatives was also provided.

Following discussion, it was proposed that Samantha Gillan (Renfrew YMCA); Roberta Robertson (Renfrew Development Trust); Diane Booth (Our Place Our Families); Thomas Johnston (Renfrew Football Club); David Hoey (Renfrew Burgh Band); and Ramsay MacLennan (30 Acres) be appointed to the Local Partnership. This was agreed.

It was also proposed that Community Planning contact those applicants who had not been successful in their applications to become members of the Local Partnership and set out the opportunities available to them to participate in the business of the Local Partnership on a non-voting basis. This was agreed.

DECIDED:

(a) That it be agreed that Samantha Gillan (Renfrew YMCA); Roberta Robertson (Renfrew Development Trust); Diane Booth (Our Place Our Families); Thomas Johnston (Renfrew Football Club); David Hoey (Renfrew Burgh Band); and Ramsay MacLennan (30 Acres) be appointed to the Local Partnership and;

(b) That it be agreed that Community Planning contact those applicants who had not been successful in their applications to become members of the Local Partnership and set out the opportunities available to them to participate in the business of the Local Partnership on a non-voting basis.

2 **DATE OF NEXT MEETING**

It was agreed that the next meeting would take place on 28 March 2019 at 6pm in Renfrew Town Hall.

DECIDED: That the next meeting of Renfrew Local Partnership would take place on 28 March 2019 at 6pm in Renfrew Town Hall.

Renfrew

Local Profile: Background Information



#ourRenfrewshire

 Renfrewshire
Community Planning
Partnership

Population

How many people live here?

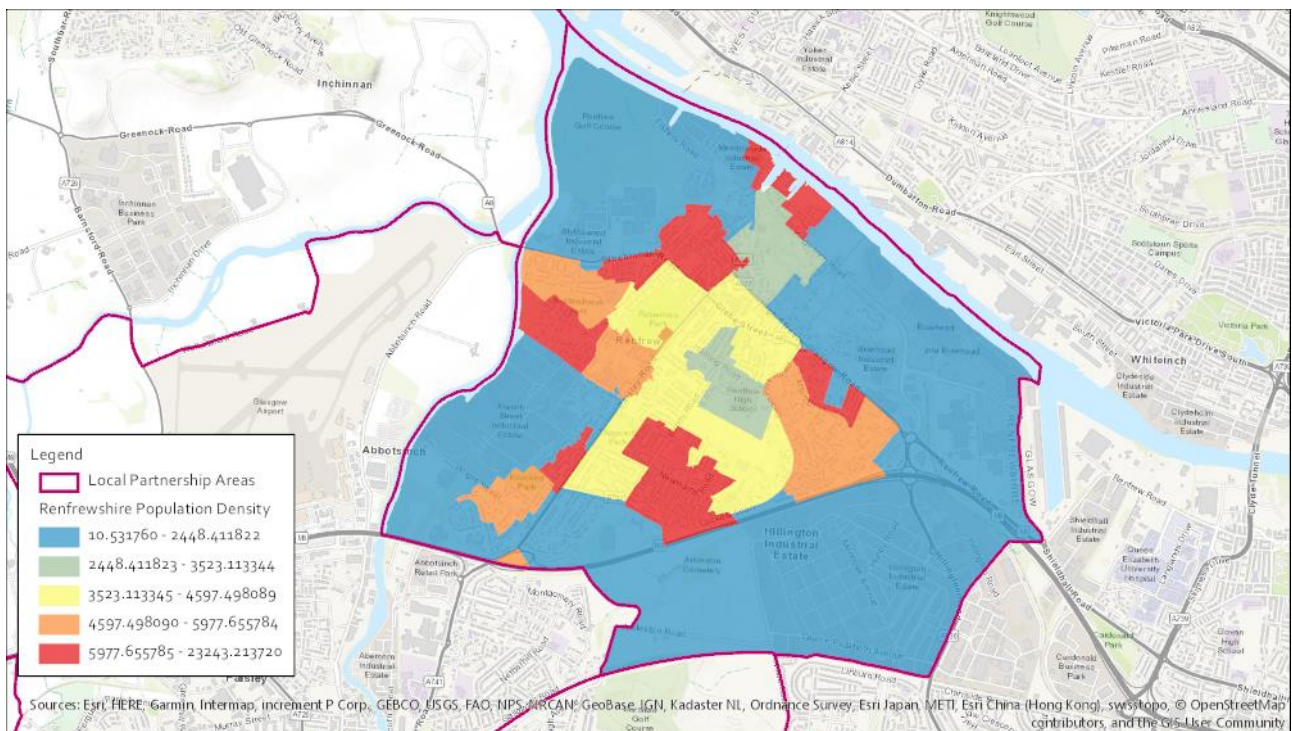
22,929 people in total live in the Renfrew area.

What age are people living here?

Renfrew East	14%	64%	22%
Renfrew North	16%	72%	12%
Renfrew South	15%	59%	26%
Renfrew West	20%	66%	15%
Overall	17%	65%	18%

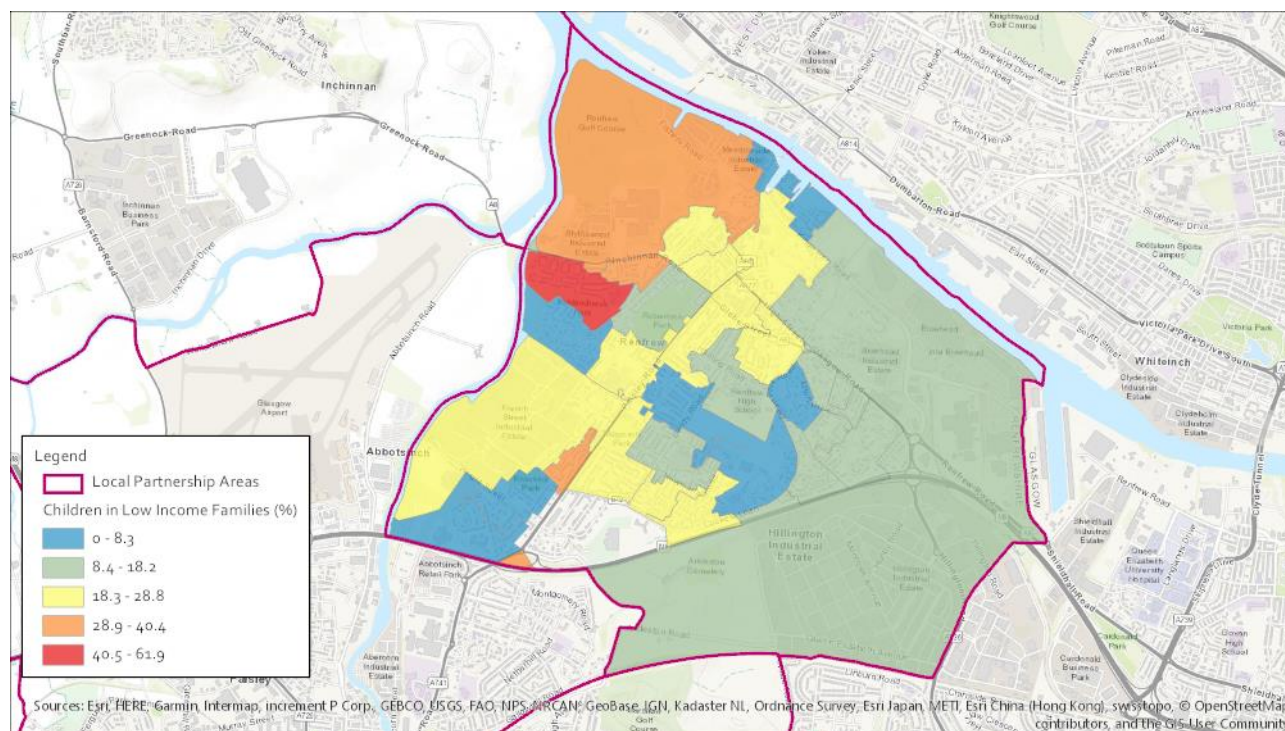
Please note figures may not add up to 100% because of rounding

Population Density



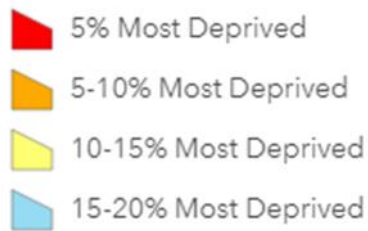
Children in Low Income Families

As recorded by the Scottish Index of Multiple Deprivation



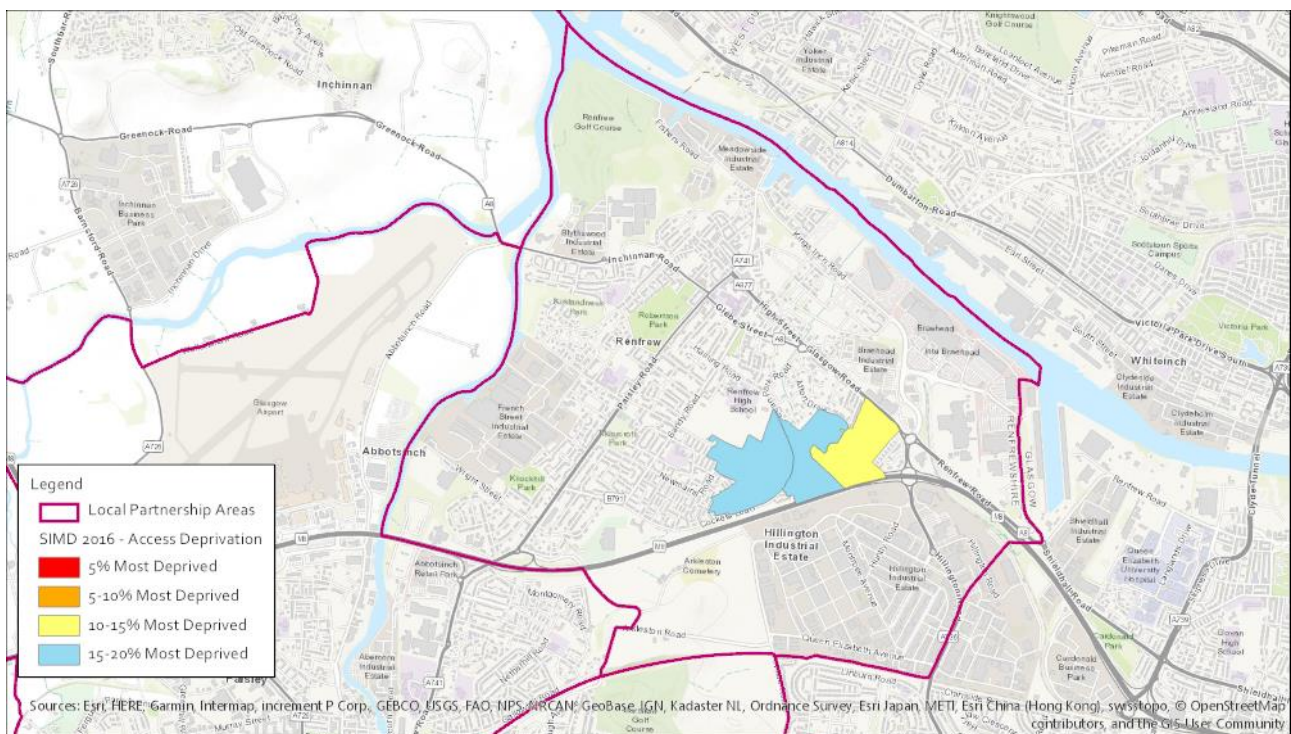
The tables below are also taken from the Scottish Index of Multiple Deprivation and show other dimensions of deprivation: access, health and crime. The key below applies to the following three tables.

SIMD 2016 - Access Deprivation



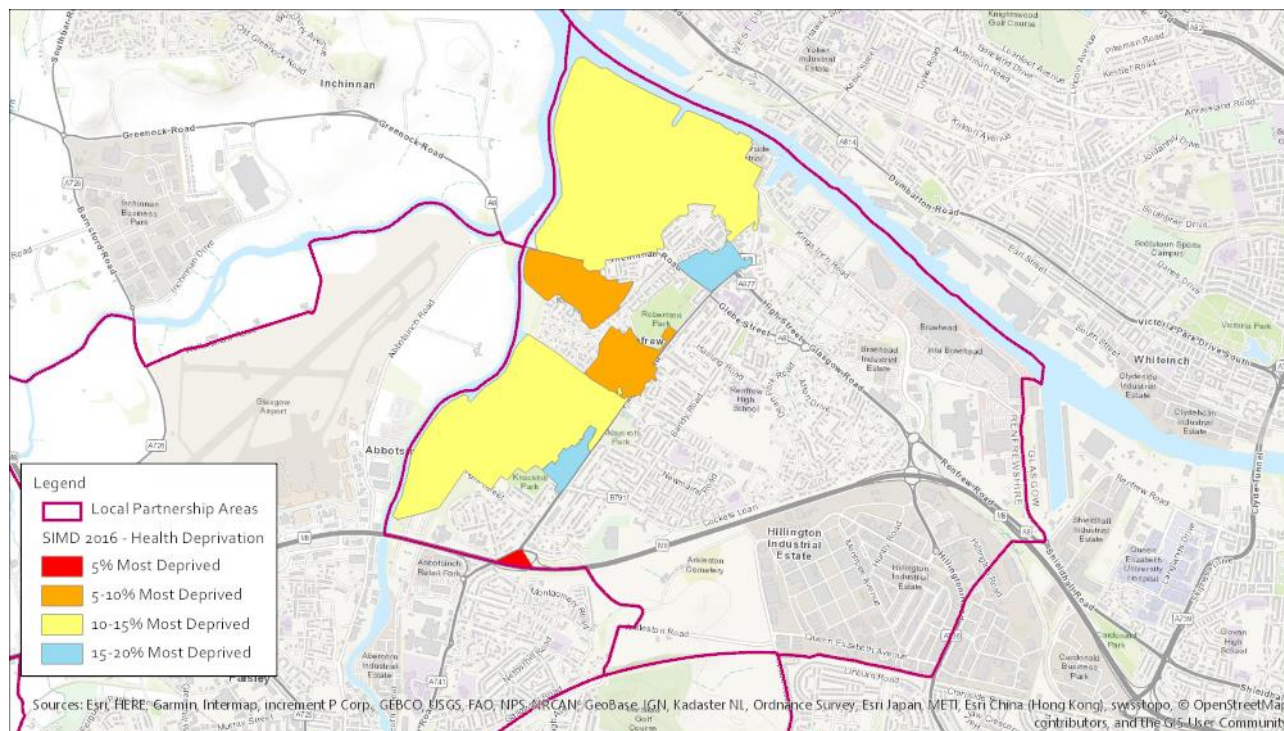
Access Deprivation

This measure includes drive time to GP, to retail centre, to petrol station, to primary and secondary schools, to post office and public transport time to GP, to retail centre, to post office.



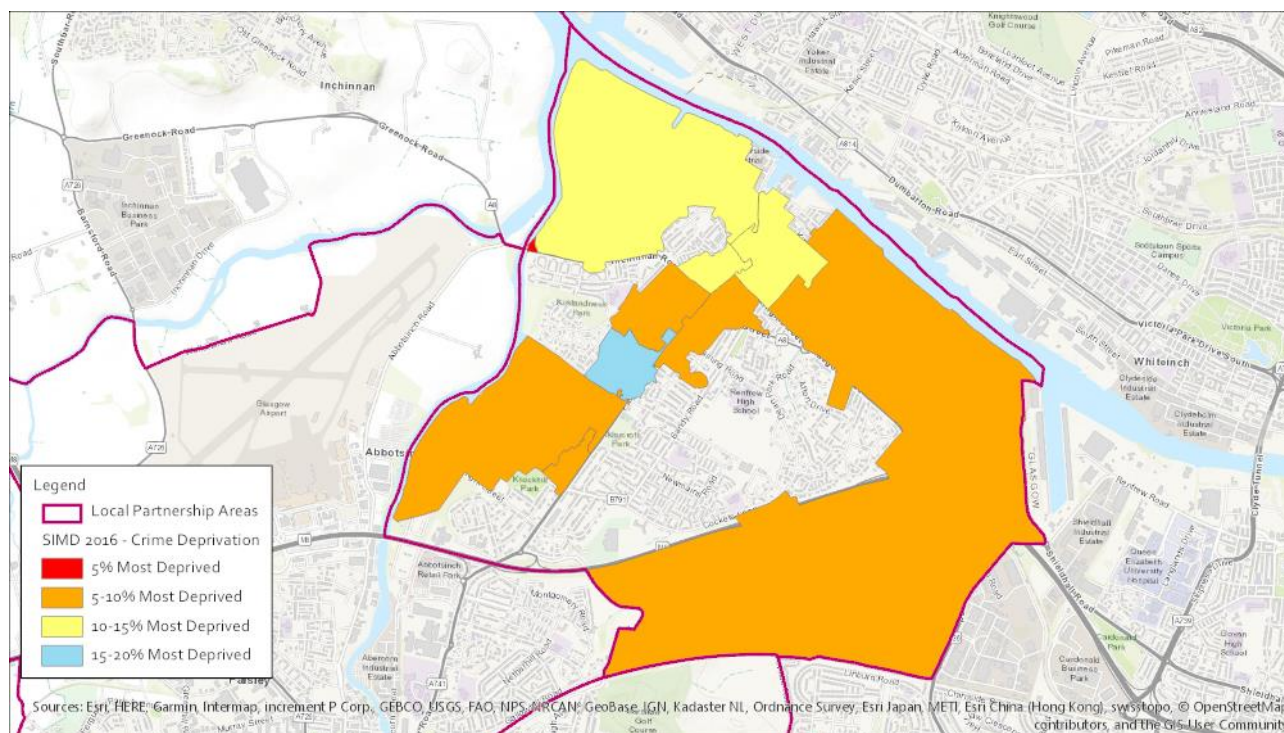
Health Deprivation

This measure includes the Standardised Mortality Ratio; Hospital stays related to alcohol misuse; Hospital stays related to drug misuse; Comparative Illness Factor; Emergency stays in hospital; Proportion of population being prescribed drugs for anxiety, depression or psychosis; and Proportion of live singleton births of low birth weight.



Crime Deprivation

This measure includes Domestic house breaking, Drug offences, Common assault, Crimes of violence, Vandalism and Sexual offences.



Place Standard, 2017

117 residents in Renfrew responded to the Our Renfrewshire, Place Standard Consultation. 73 (62%) of the respondents were female, 42 (38 %) were male, with most respondents of working age.

Open space came out top, as the term mentioned most when thinking about priorities for the area. The wordle below shows the terms that were most frequently mentioned in the largest text, when discussing priorities for the area.



Most positive responses

Respondents felt most strongly positive about the following themes:



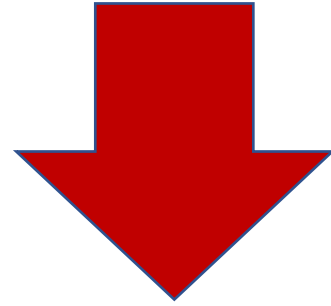
Play and recreation

Identity and belonging

Least positive responses

Respondents felt negative about the following themes:

Moving around
Public transport
Traffic and parking
Streets and spaces
Work and local economy
Care and maintenance
Influence and sense of control



Mixed responses

Most mixed responses were received about natural space; facilities and amenities; housing and community; social contact; and feeling safe

Children & Education

Education resources

Secondary School

Trinity High School (denominational)

Renfrew High School (no denominational)

Primary Schools

Kirklandneuk Primary School (non denominational)

St James' Primary School (denominational)

Newmains Primary School (non denominational)

Arkleston Primary School (non denominational)

Nurseries

Little Flowers Nursery (private and voluntary sector)

Moorpark Pre-Five Centre (local authority)

3 Bears Nursery (private and voluntary sector)

Cherrie Daycare Nursery (private and voluntary sector)

Glendee Pre-Five Centre (local authority)

Renfrew Day Nursery (private and voluntary sector)

Little Stars Hillington (private and voluntary sector)

Parks and greenspace

Playpark at Hamilton Crescent

Clyde View Park

Playpark at North Church

Playpark at Inchinnan Road

Playpark to South of No 43

Playpark at Charles Avenue

Kirklandneuk Park

Robertson Park

Alexandra Park

Playpark at Millburn Way

Playpark between Nos 8 and 10, Urquhart Crescent

Playpark at Birch Way and Maitland Place

Playparks at McCracken Avenue

Playpark at Victory Gardens

King George V Memorial Playing Fields
Playpark at Lomond Avenue
Knockhill Park
Cockleshill Park

Health Resources

Health Centres

Renfrew Health and Social Care Centre

Aranthruie Centre

Blythswood House (hospital)

GP Practices

Kingsinch Medical Practice

Aranthruie Centre

Pharmacies & Dentists

Phoenix Clinic

The Co-operative Pharmacy

Rowlands Pharmacy

Boots Pharmacy

Parkview Dental Surgery

Alliance Pharmacy

Boots Pharmacy

Dental Studio Renfrew

Care Homes, Extra Care & Sheltered Housing

Care homes are listed below:

Care Homes

Craigielea (85 units)

Renfrew Care Home (60 units)

Extra Care, Respite & Sheltered Housing

Orchard Court (15 units)

Fulbar Court (20 units)

Monkdyke House (33 units)

Muirpark Avenue (4 units)

Adult Health and Wellbeing across Renfrewshire

- 80% of people say their health is good or very good.
- 15% of people say they smoke, 10% drank alcohol at least twice per week.
- 7% of people feel isolated from family and friends.
- 46% say they have at least 5 portions of fruit and veg per day.
- 47% of people do 150 minutes of exercise per week.



To: Renfrew Local Partnership

On: 28 March 2019

Report by:
Chief Executive, Renfrewshire Council

TITLE:
Local Partnership – Future Arrangements

1. Summary

- 1.1 Renfrew Local Partnership requires to take a number of decisions about its operation over the next year.
- 1.2 These decisions relate to the arrangements for meetings and the name the Local Partnership wishes to be known by. Members of the Local Partnership are invited to contribute to these decisions as set out in section 3 below.

2. Recommendations

- 2.1 It is recommended that Renfrew Local Partnership:
 - (a) Agree that three further meetings of the Local Partnership be held in June 2019, November 2019 and March/April 2020 with a wider community engagement event to take place during September/October 2019, as set out in paragraphs 3.1 – 3.3.
 - (b) Agree that members of the Local Partnership contribute their views on accessible venues for future meetings, as set out in paragraph 3.4.
 - (c) Agree that members of the Local Partnership contribute suggestions for its name going forward as set out in paragraphs 3.5-3.6, for decision at next meeting on Tuesday 25 June 2019.
 - (d) Note the arrangements for Community Representative expenses, as set out in paragraph 3.7.

3. Background

- 3.1 Local Partnerships will meet a minimum of three times per year. The next meeting of Renfrew Local Partnership will take place at 6pm on Tuesday 25 June 2019 in Renfrew Town Hall.
- 3.2 It is proposed that each Local Partnership sets two further dates to meet in November 2019 and March/April 2020 and that the start time for meetings be agreed as 6pm.
- 3.3 In addition to the three Local Partnership meetings per annum it is proposed that a community event be organised to enable engagement with community groups, voluntary organisations and members of the public who are not members of the Partnership.
- 3.4 Renfrew Local Partnership is asked to consider whether it would prefer a single venue for all meetings or to alternate between different venues within the Local Partnership area. Members are asked to send any suggestions for accessible local venues to communityplanning@renfrewshire.gov.uk by Tuesday 7 May 2019.
- 3.5 Each of the seven Local Partnerships consist of groupings of Community Councils. The name currently being used for the Local Partnership is simply a list of the names of each Community Council in the area.
- 3.6 Each Local Partnership may choose its own name, by agreeing either to continue with its current name or changing to an alternative name. Proposals for an alternative name should be submitted to communityplanning@renfrewshire.gov.uk by Tuesday 7 May 2019 for consideration and decision at the meeting of the Local Partnership.
- 3.7 Under the previous Local Area Committee arrangements, community representatives were entitled to £50 per annum expenses to attend meetings. Members of the Local Partnership may continue to claim £50 per annum expenses for attendance at meetings. This resource would be drawn from the Local Partnership grant funding allocation as was the case previously under Local Area Committee arrangements.