

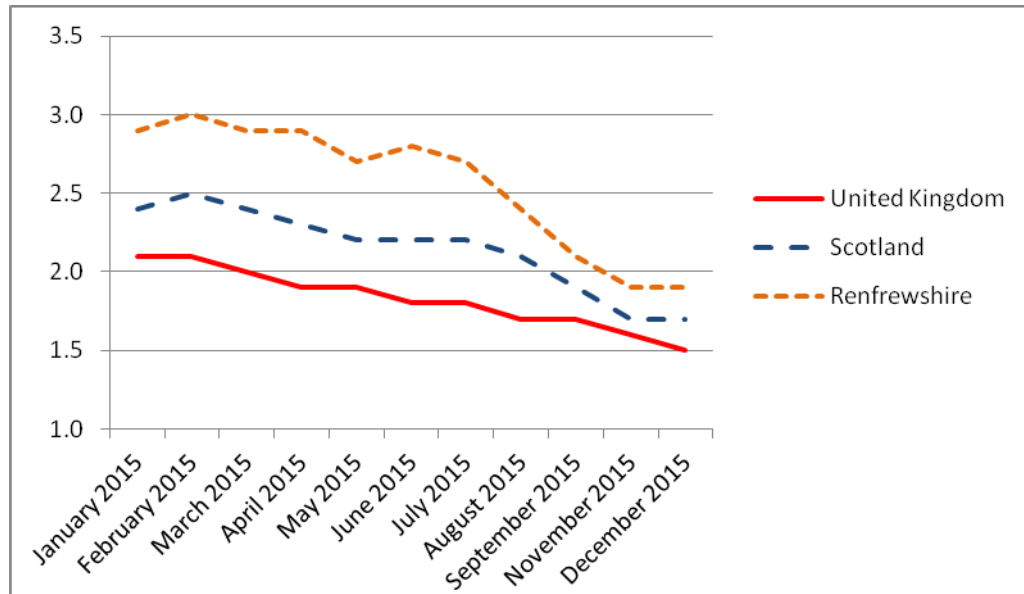


Renfrewshire Council

# Renfrewshire Economic Development Newsletter – January 2016

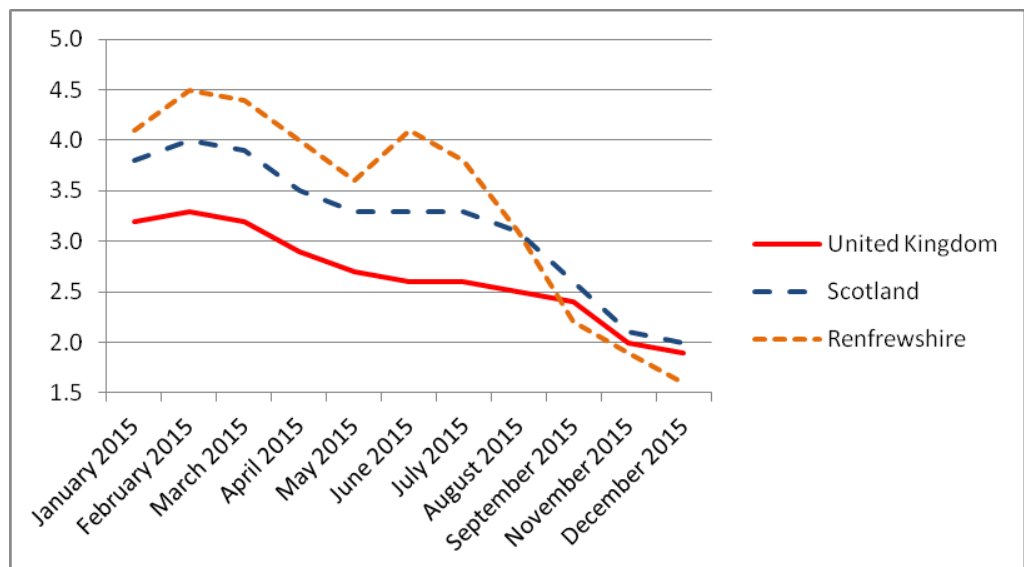
## JSA Claimants: All Ages (16-64)

- The Job Seeker's Allowance rate for December 2015 was 1.9%, with jobseekers totalling 2,105.
- This month the rate has remained constant.
- The rate this time last year was higher at 2.7%.



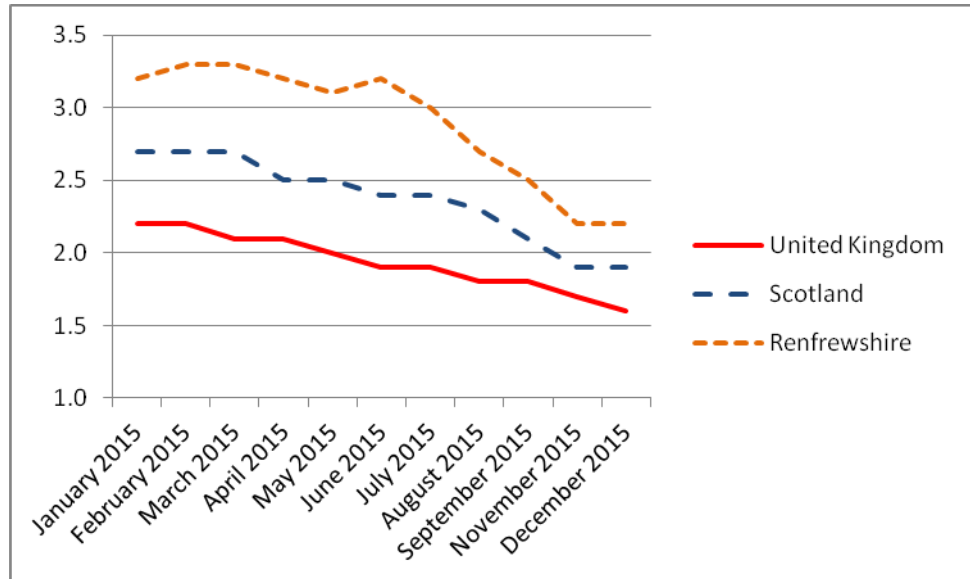
## JSA Claimants: Aged 18-24

- The Job Seeker's Allowance rate for December 2015 was 1.6%, with jobseekers totalling 250.
- This month the rate has decreased, dropping by 0.3%.
- The rate this time last year was much higher at 3.8%.



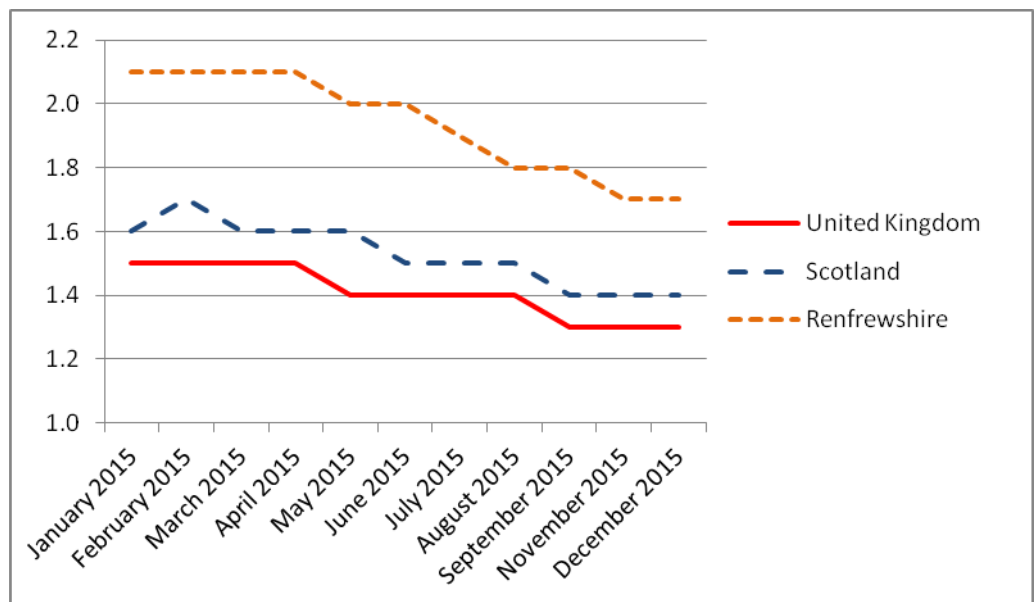
### JSA Claimants: Aged 25-49

- The Job Seeker's Allowance rate for December 2015 was 2.2%, with jobseekers totalling 1,250.
- This month the rate has stayed the same.
- The rate this time last year was much higher at 3%.



### JSA Claimants: Aged 50+

- The Job Seeker's Allowance rate for December 2015 was 1.7%, with jobseekers totalling 600.
- This month the rate has remained constant.
- The rate this time last year was slightly higher at 2%.



Source: ONS claimant count - age duration with proportions

Note: % is number of persons

## Local Economic Development Update

Renfrewshire's **youth JSA rate** continues, for the third month, to be **lower** than both the Scottish and UK average, sitting at 1.6% for December 2015. The **youth JSA rate** has fallen by 2.2% in the space of just 1 year, a decrease even bigger than that of both the Scottish and UK-wide average.

The **InCube Shop** has now been open for business since October. Since then, the shop has showcased and sold the products and services offered by the resident **InCube** businesses. Two paid traineeships have already been appointed for the first phase, providing opportunities for 2 young unemployed people. The full retail academy will operate from Easter and is anticipated to support around 50 unemployed people each year to first train for and then move into retail work.

**Invest in Renfrewshire Programme** brings the **Business** and **Employability** agendas together. Now, there is a new information management system being developed. This allows the **Invest** teams to work better together and deliver overall better services for local Businesses and local people.

**Project SEARCH** has had a successful start to its first year at Renfrewshire Council, with placements at both Renfrewshire House and Council facilities elsewhere. All 12 of the trainees are progressing well.

**Global Entrepreneurship** Week: Renfrewshire was selected as winner of the High Impact award for Global Entrepreneurship Week 2015 as one of the top 10 contributors across the UK with 19 events running during the week, co-ordinated by InCube.

Plans for a **rail connection** between the airport, Paisley and Glasgow Central Station took another step forward on Tuesday (15 December) when the Glasgow and the Clyde Valley City Deal Cabinet endorsed plans by approving £1.149 million of funding to progress work on this key project.

New flights from **Glasgow Airport**: Blue Air, the first smart flying company with over 65 routes in Europe, operated the first flight from Glasgow to Bucharest. The new route will be available every Thursday and Sunday.

The work on new retail buildings at the Abbotsinch Retail Park is nearly complete. Over the last few months, buildings from phase three of the park's development have been opened. The new tenants are Oak Furnitureland and Tapi Carpets.

The former **BASF site in Paisley** is earmarked for residential development after a joint venture company between the Miller Development Group and Craigrossie Properties bought the site for an undisclosed sum.

The dairy group **Graham's**, whose head office is in Paisley, has bought the **First Milk** operation in Fife. Graham's will take over the site which employs 79 staff.

Up to 2,500 Scottish jobs are at risk after plans were unveiled to close tax offices throughout the country by **amalgamating HMRC's current network** of 18 offices into two major hubs in Glasgow and Edinburgh. HMRC indicated that most of their Scottish offices will close by 2020-21. It is expected that between 2,300 and 2,600 staff will continue to work in the Edinburgh regional centre and 3,400 to 3,700 in Glasgow.

**London & Scottish Investments (LSI)**, have acquired a number of sites previously owned by Tesco across Scotland including sites at Love Street and Wallneuk Rd / Renfrew Road Paisley. Planning consent already exists for a residential development at Love Street but the new owner is currently consulting on a proposal for the Wallneuk Rd site that seeks to promote a mixed development of retail, commercial and residential uses. Any subsequent application will be reported through the Planning & Property Board.

## Invest in Renfrewshire Update – January 2016

### INVEST IN EMPLOYMENT

Since the launch of Invest in Renfrewshire in June 2012 **1,010** new paid posts have been created:

- **735** new jobs have been created through the wage subsidy / Employer Recruitment Incentive programmes.
- **199** Graduate Internships have been created, **126** within the Council and **63** with local companies (approved).
- **76** people have started traineeships, **68** with the Council and **8** with Businesses.

In addition:

- **7,139** unemployed people have registered and received support from the Invest in Renfrewshire employability service.
- **2,231** additional people have been supported to move into wider employment opportunities.

### INVEST IN COMMUNITIES

The Invest in Renfrewshire Social Enterprise Small Grants Fund, launched in December 2014, with a budget of £100k has now:

- Dealt with enquiries from **50** social enterprise companies and organisations.
- Approved **15** awards totalling **£50,282**.

### INVEST IN BUSINESS

**834** local companies have signed up to the Invest in Renfrewshire initiative of which:

- **684** have created new jobs and internships for young people
- **363** companies have been offered grants to pursue development, training, exhibition and ICT projects, amounting to combined funding of over **£1,618,754**.
- Funding of **£87,100** has been provided through the micro loan fund.
- The Retail Improvement Scheme has received **146** formal applications. The applications to hand are **27**. The amount of grant support awarded to date is approximately **£720,000**.

In the last 38 months, since the start of the new Business Gateway contract:

- **991** new companies have been established with Business Gateway support.
- **426** businesses have demonstrated growth aspiration and been given a dedicated business adviser.
- **268** start-up workshops and **204** business growth workshops have been delivered.