
To: Education and Children's Services Policy Board

On: 20 August 2020

Report by: Director of Children's Services

Heading: Response to proposal to consult on catchment reviews affecting: Kilbarchan and East Fulton Primary Schools; Kilbarchan and Woodlands Primary Schools; St Margaret's and Our Lady of Peace Primary Schools; and Johnstone and Linwood High Schools

1. Summary

- 1.1 On 31 October 2019 the education and children's services policy board agreed to a formal consultation on proposals to review catchment arrangements affecting Kilbarchan and East Fulton Primary Schools; Kilbarchan and Woodlands Primary Schools; St Margaret's and Our Lady of Peace Primary Schools; and Johnstone and Linwood High Schools.
 - 1.2 In line with legislative requirements detailed in the Schools (Consultation) (Scotland) Act 2010, amended through the enactment of the Children and Young People (Scotland) Act 2014, a formal consultation on the proposal was undertaken and a consultation document was prepared and issued simultaneously to parents and interested parties affected by the proposal.
 - 1.3 The consultation formally opened on 18 November 2019 and closed at 12 noon on 21 January 2020.
 - 1.4 The purpose of this report is to provide the education and children's services policy board with recommendations which recognise the issues and comments made and responses provided, in the course of the consultation exercise. A report on the issues raised and a consideration of these is included as Appendix 1 to this document.
 - 1.5 The outcome of this consultation demonstrates support for the proposal and the education and children's services policy board is therefore asked to approve the recommendation to alter these catchment areas.
-

2. Recommendations

- 2.1. The education and children's services policy board is asked to:

- note the issues raised through the formal consultation detailed in Appendix 1;
 - note the comments made by Education Scotland in relation to the educational benefits of the proposals detailed in appendix 4;
 - approve the revised catchment arrangements for Kilbarchan and East Fulton Primary Schools; Kilbarchan and Woodlands Primary Schools; St Margaret's and Our Lady of Peace Primary Schools; and Johnstone and Linwood High Schools; and
 - approve the implementation of the catchment changes from August 2021.
-

3. Background

- 3.1 The education and children's services policy board agreed to a formal consultation on the proposal to review catchment arrangements affecting Kilbarchan and East Fulton Primary Schools; Kilbarchan and Woodlands Primary Schools; St Margaret's and Our Lady of Peace Primary Schools; and Johnstone and Linwood High Schools.
 - 3.2 Elected members agreed a consultation document which was subsequently issued to parents and interested parties affected by the proposal. A copy of the consultation document is attached to this report as appendix 2.
 - 3.3 The consultation formally opened on 18 November 2019 and closed at 12 noon on 21 January 2020.
 - 3.4 Responses to the proposals to review the catchment areas affecting Kilbarchan and East Fulton Primary Schools; Kilbarchan and Woodlands Primary Schools; St Margaret's and Our Lady of Peace Primary Schools; and Johnstone and Linwood High Schools are contained within Appendix 1 to this report.
-

4. Consultation

- 4.1. Following agreement to consult on the proposal to review catchment arrangements a consultation document was issued to parents and interested parties affected by the proposals.
- 4.2. The consultation document invited members of the public to respond to the proposals either through contributions to a public consultation meeting or by written submissions in hard copy or email to the director of children's services. Interested parties also had the opportunity to take part in the consultation through the Council's online survey.
- 4.3. A public meeting was held for parents and members of the public as part of the consultation process on 26 November 2019.
- 4.4. A presentation was made by officers from children's services to outline the background to the proposal, highlighting the impact this would have on the school communities. Questions were invited and notes of the questions asked and the answers provided by education officers were recorded.
- 4.5. A report on written responses received and comments made through the Council's online survey is attached as Appendix 1 to this report.

- 4.6. The total number of responses received is as follows. Proposal 1: Kilbarchan and East Fulton Primary Schools 48 responses; proposal 2: Kilbarchan and Woodlands Primary Schools 34 responses; proposal 3: St Margaret's and Our Lady of Peace Primary Schools 19 responses; and proposal 4: Johnstone and Linwood High Schools 36 responses.
- 4.7. All responses received were considered and responded to. The proposals were reviewed in light of those responses. Those which raised concerns were addressed and were balanced against the educational benefits of the proposal identified by the Council. The recommendation of this report to the education and children's services policy board is also informed by the positive and supportive comments received from Education Scotland.
-

5. Comments and observations arising from the consultation

- 5.1. During the course of the consultation, questions were raised regarding how the Council would progress this proposal. Appendix 1 to this document, "Response to the consultation on the proposal to review catchment arrangements affecting Kilbarchan and East Fulton Primary Schools; Kilbarchan and Woodlands Primary Schools; St Margaret's and Our Lady of Peace Primary Schools; and Johnstone and Linwood High Schools", details the questions asked and the responses provided.
- 5.2. Education Scotland have been consulted on the proposal in line with legislative requirements detailed in the Schools (Consultation) (Scotland) Act 2010, amended through the enactment of the Children and Young People (Scotland) Act 2014. The response received from Education Scotland was supportive of the Council's proposal and it is attached to this document as Appendix 4. A summary of this finding is noted below.
- 5.2.1. The council's proposal provides a strong case to review catchment areas affecting: Kilbarchan and East Fulton Primary Schools; Kilbarchan and Woodlands Primary Schools; St Margaret's and Our Lady of Peace Primary Schools; and Johnstone and Linwood High Schools.
- 5.2.2. The council recognises the potential impact of increasing roll numbers on Kilbarchan Primary School due to housing developments and is taking steps to resolve this through this proposal.
- 5.2.3. The council outlines the associated educational benefits to all affected schools. HM Inspectors endorse this view. All children, young people and school staff who met with HM Inspectors were supportive of the proposal. In taking this forward, the council should, as part of its plans, consider road safety and safe walking routes to school.
- 5.2.4. The council's proposal, should it proceed, will see improved alignment of localities to school catchment areas. This forward planning will assist the authority in managing the rolls in all affected schools.
-

Implications of this report

- 1. Financial**
None.
- 2. HR and Organisational Development**
None.
- 3. Community/Council Planning**
Our Renfrewshire is thriving - All children within the defined areas will have the opportunity to attend the same primary school.
- 4. Legal**
Renfrewshire Council will comply with the Schools (Consultation) (Scotland) Act 2010 (the 2010 Act) in respect of the proposals.
- 5. Property/Assets**
Through its school estate the Council aims to have an efficient and well maintained property portfolio which provides learning environments which support the delivery of the curriculum.
- 6. Information Technology**
None.
- 7. Equality and Human Rights**
The Recommendations contained within this report have been assessed in relation to their impact on equalities and human rights. No negative impacts on equality groups or potential for infringement of individuals' human rights have been identified arising from the recommendations contained in the report. An equalities impact assessment is attached as Appendix 3 to this report.
- 8. Health and Safety**
None.
- 9. Procurement**
None.
- 10. Risk**
None.
- 11. Privacy Impact**
None.
- 12. Cosla Policy Position**
None.
- 13. Climate Risk**
None.

List of Background Papers

Background Paper 1: Proposals to consult on catchment reviews affecting:
Kilbarchan and East Fulton Primary Schools; Kilbarchan
and Woodlands Primary Schools; St Margaret's and Our
Lady of Peace Primary Schools; and Johnstone and
Linwood High Schools.

The foregoing background papers will be retained within children's services for inspection by the public for the prescribed period of four years from the date of the meeting. The contact officer within the service is Ian Thomson, Education Manager, 0141 618 7241, ian.thomson@renfrewshire.gov.uk

Children's Services

IT/GMcK/LG

6 July 2020

Author: Ian Thomson, Education Manager, 0141 618 7241, ian.thomson@renfrewshire.gov.uk

Response to the consultation on the proposals to review catchment arrangements affecting Kilbarchan and East Fulton Primary Schools; Kilbarchan and Woodlands Primary Schools; St Margaret's and Our Lady of Peace Primary Schools; and Johnstone and Linwood High Schools

1 Consultation Process

- 1.1 Following agreement to consult on proposals to review catchment areas affecting Kilbarchan and East Fulton Primary Schools; Kilbarchan and Woodlands Primary Schools; St Margaret's and Our Lady of Peace Primary Schools; and Johnstone and Linwood High Schools consultation documents were issued to all interested parties.
- 1.2 A public consultation meeting was held with parents, members of the public and staff from the affected schools.
- 1.3 The consultation formally opened on 18 November 2019 and closed at 12 noon on 21 January 2020.
- 1.4 Copies of the consultation document were made available to the parents of children and young people attending affected schools and early years establishments and to all parent council groups. Copies of the document were also distributed to local libraries and a copy was placed on the Council website. Adverts to notify the public of the consultation meeting were also placed in the local press. In addition, the consultation document was issued to council officers, local elected members, MSPs and MPs for the Renfrewshire area and Education Scotland.
- 1.5 All formal responses submitted as part of the consultation exercise have been retained and can be viewed on request to the director of children's services.

2 The Consultation

- 2.1 137 written responses were received from interested parties registering their comments on the proposals. The following is a breakdown of responses that were received:

Proposal 1: Kilbarchan and East Fulton Primary Schools

Category	Number of Responses	Type of Response
Parents/ Carer	37	on-line survey or questionnaire
Pupils	1	on-line survey or questionnaire
Renfrewshire Resident	8	on-line survey or questionnaire
Other	1	on-line survey or questionnaire
Renfrewshire Resident	1	e-mail

Proposal 2: Kilbarchan and Woodlands Primary Schools

Category	Number of Responses	Type of Response
Parents/ Carer	31	on-line survey or questionnaire
Pupils	1	on-line survey or questionnaire
Renfrewshire Resident	2	on-line survey or questionnaire

Other	0	on-line survey or questionnaire
Renfrewshire Resident	0	e-mail

Proposal 3: St Margaret's and Our Lady of Peace Primary Schools

Category	Number of Responses	Type of Response
Parents/ Carer	16	on-line survey or questionnaire
Pupils	0	on-line survey or questionnaire
Renfrewshire Resident	1	on-line survey or questionnaire
Other	1	on-line survey or questionnaire
Renfrewshire Resident	1	e-mail

Proposal 4: Johnstone and Linwood High Schools

Category	Number of Responses	Type of Response
Parents/ Carer	18	on-line survey or questionnaire
Pupils	13	on-line survey or questionnaire
Renfrewshire Resident	3	on-line survey or questionnaire
School Staff	2	on-line survey or questionnaire
Other	0	on-line survey or questionnaire
Renfrewshire Resident	0	e-mail

2.2 The public meeting was held in Woodland's Primary School on 26 November 2019 and was attended by 23 people.

2.3 A note of the meeting was taken and can be obtained by request to the director of children's services and can be viewed on the Council website.

2.4 The staff at all schools affected were advised of the consultation and had the opportunity to attend the public event.

3 Key issues and comments raised during the consultation meeting

3.1 Questions, comments and responses from the public meeting have been summarised below. The head of schools advised that:

3.1.1 Renfrewshire Council approved a new school estate management plan (SEMP) in May 2019;

3.1.2 The Council continually reviews the performance of the school estate in terms of core fact findings which relate to the sufficiency, condition and suitability of buildings;

3.1.3 The new SEMP also includes assessment of current and future housing development (considering how new housing impacts on roll projections);

3.1.4 A proposal was approved to consult on catchment reviews affecting Kilbarchan and East Fulton Primary Schools; Kilbarchan and Woodlands Primary Schools; St Margaret's and Our Lady of Peace Primary Schools; and Johnstone and Linwood High Schools;

- 3.1.5 Attendees were advised of Renfrewshire Council's commitment to the Equalities Act 2010; and
- 3.1.6 The presentation delivered outlined the rationale and timeline of the proposals. It highlighted the Council's commitment to improving outcomes for all children through careful management of the school estate.
- 3.1.7 The head of schools and an education manager conducted a question and answer session:

Q Am I right in saying that you give out planning permission then have the consultation? If this is the case – could the consultation not happen first?

R It was explained that this was a unique position and action is being proposed to address potential accommodation issues within our school estate. It was also explained that our planning colleagues provide an annual Housing Land Audit, and this information is factored into the roll projections. Officers within both services meet regularly and if Children's Services officers have any concerns in relation to the impact a development may have, this information is passed to planning colleagues. It was highlighted that only a very small number of children are actually attending Kilbarchan Primary School from the Weirs Wynd development.

Q An elected member commented that as Councillor for the local area she has never seen a housing development with so many changes. The Weirs Wynd development has had a significant number of changes agreed. Initially the development was for large family homes but laterally the development is progressing with smaller family homes.

R Your comments have been noted.

Q Are current school rolls available?

R This information is detailed within our board report. Copies are available here this evening or via the council's website.

Q My daughter currently attends Our Lady of Peace Nursery, which may mean more children. Does prioritisation exist for nursery provision / placing requests.

R Renfrewshire Council adheres to placing request legislation. Officers offered to provide individual advice to specific queries further to the question and answer session.

Q With regards to the projected numbers being low, this might change. Are there any plans to build a new school?

R There are no plans to build a new school. The council's roll projection methodology was explained and advised that new housing estates stabilise where rolls not continually rising as a result.

Q Road congestion is a particular issue within the area, with the back road being treacherous at some points. What considerations have been put in place?

R Effective Travel planning arrangements are a priority for the Council. The schools affected would work locally with parents and other council services to ensure safe, effective travel planning arrangements are put in place for each of the establishments affected. This could involve schools working with parents/ community representatives to change behaviours.

Q Car Parking at every school is dangerous. East Fulton parents have a problem currently, moving forward hopefully the changes address problems.

R It was acknowledged that drop-off and pick-up creates traffic congestion at many schools. Schools encourage children to walk where a safe walking route has been identified. The council respectfully requests that parents make positive choices when parking around schools. Our schools will continue to work with parents to change behaviours.

We are currently piloting new methods which include an exclusion zone outside a school. This should hopefully result in overall improvements in pupil safety. A

review will be carried out at the end of the pilot period and any lessons learned or new practices identified shared with schools.

Q Kilbarchan Primary School are working with community partners and community council representatives to address local parking issues.

R Your comments have been noted.

Q We have parking issues at Woodlands. Parents park where they like and the cycle path is not suitable for walking down as a route to school.

R We are required to identify a safe walking route to schools. If no safe walking route is identified children would qualify for school transport.

Q Has transport been considered?

R Not at this point. However, you raise a very valid and important point. I can advise that should no safe walking route be identified for the pupils who reside within the new developments, then they would qualify for school transport whether the proposals go ahead or not.

Q Has there been a projection of how it will actually affect class sizes? Will it be one extra pupil for each class? Is this too much pressure on teachers?

R Schools are allocated staffing based on their roll. This can increase or decrease depending on the individual class structures. The staffing allocation is transparent and is applied consistently across all Renfrewshire schools. The structuring of classes is complex and reviewed annually. Children's Services officers carry out an annual exercise which classifies the best structure available to schools based on their planned intake. Children's Services officers liaise with head teachers to ensure the best class structure is implemented locally.

Q Would it mean more composite classes?

R No, not necessarily.

Q Composite classes can mean the difference of children having a two-year maturity gap. Has this been looked at?

R Thank you for your comments. The proposals do not directly impact on this area.

4 Analysis of written and online submissions

4.1 Proposal 1: Kilbarchan and East Fulton Primary Schools

4.1.1 One general enquiry was received and 47 responses were received via the on-line survey or questionnaire.

4.1.2 22 responses (47%) were supportive of the proposal and 25 (53%) responses were against.

4.2 Proposal 2: Kilbarchan and Woodlands Primary Schools

4.2.1 No general enquiries were received and 34 responses were received via the on-line survey or questionnaire.

4.2.2 20 responses (59%) were supportive of the proposal and 14 (41%) responses were against.

4.3 Proposal 3: St Margaret's and Our Lady of Peace Primary Schools

4.3.1 One general enquiry was received and 18 responses were received via the on-line survey or questionnaire.

4.3.2 8 responses (44%) were supportive of the proposal and 10 (56%) responses were against.

4.4 Proposal 4: Johnstone and Linwood High Schools

- 4.4.1 No general enquiries were received and 36 responses were via the on-line survey or questionnaire.
- 4.4.2 22 responses (61%) were supportive of the proposal and 14 (39%) responses were against.

5 Questions, comments and responses relating to written and online submissions

5.1 Proposal 1: Kilbarchan and East Fulton Primary Schools

Approach to consultation:

Summary of complaint. 1 complaint was received alleging that the Council had failed to conduct a meaningful consultation with communities because it did not make provision to contact all parents of any children who would be likely to become pupils at the affected schools within 2 years of the date of publication of the proposal paper.

Response:

Taking into account the measures noted below to notify parents of the proposals affecting, Kilbarchan and East Fulton Primary Schools; Kilbarchan and Woodlands Primary Schools; St Margaret's and Our Lady of Peace Primary Schools; and Johnstone and Linwood High Schools, it is the Council's view that the issue identified by the complainant is not in itself a reason to invalidate the consultation process that has been undertaken.

The following communication arrangements which were put in place:

- The proposal to consult was published on the Council's website on 24 October 2019;
- Adverts were placed in the Paisley Daily Express on 18 November 2019 and in the Paisley and Renfrewshire Gazette on 20 November 2019;
- The Council's "have your say" page, which provides interested parties with the opportunity to comment on the proposal to review catchment areas, went live on the Council's website on 18 November 2019;
- On 18 November 2019 emails were sent to all known Childminders in areas affected by the proposals;
- On 18 November 2019 emails were sent to all Renfrewshire Council schools and early learning and childcare centres and classes affected by the proposals; and
- On 18 November 2019 emails were sent to all of the known private nurseries potentially affected by the proposals.

Building Capacity:

- I think it's crazy that a town with 3 schools which are not full have not been allocated for the new houses being built.
- Kilbarchan primary is already close to capacity.
- Kilbarchan PS already has a high occupancy rate and the additional pupils from these developments could push it beyond its capacity.
- School close to capacity.
- School not big enough to accommodate these new housing estates as well as the whole of Kilbarchan.
- If Kilbarchan Primary were to increase the number of classes, the ICT room would have to be turned into a classroom, which would be a major loss for the pupils.
- If building continues in that area then there is an increased risk of children resident in Kilbarchan not being able to attend their local primary school.
- Over crowding.

Response:

- Renfrewshire Council's projected roll analysis demonstrates that additional pupil numbers generated from this new housing development can be accommodated comfortably within the East Fulton Primary School Building.
- Both schools have dining facilities and every effort is made to ensure all children have a positive dining experience.
- This catchment review is based on the impact on education provision and the proposal addresses the potential adverse effect of overcrowding within Kilbarchan Primary School.

Class Sizes:

- School is busy enough with teachers constantly off sick.
- The class sizes have increased this year.
- Class sizes far too big.
- Currently there is not enough space for all children to be in the correct primary class for their stage and some children are required to mix with other stages. For example 10 P1 children are being taught with P2. This is a pattern throughout the school

Response:

- Renfrewshire Council adheres to the regulations in place on maximum class sizes.
- Renfrewshire Council's projected roll analysis demonstrates that additional pupil numbers generated from this new housing development can be accommodated comfortably within the East Fulton Primary School Building.

Community:

- Moved to area because of school catchment of Kilbarchan
- It's crazy to have a school visible from houses & be in another catchment area
- My eldest is already in Kilbarchan Nursery and I want him and his younger brother to continue onto Kilbarchan Primary.
- The houses are not in Kilbarchan.
- Linwood houses = Linwood schools
- We are closer to the Linwood schools
- We bought our house at Weirs Wynd due to the excellent primary & secondary schools.
- People who pay to live in the village should be guaranteed school places before those who don't.
- House builders should not have been given permission without schooling being addressed
- Kilbarchan may have future housing developments where school should be able to accept kids from
- It is unethical to use school boundaries as a bargaining tool to sell houses.
- Rest of Brookfield has catchment of Kilbarchan
- The house prices in the area will drop if the catchment area for the schools changes to Linwood.
- We do not live in Linwood, we live in Brookfield and therefore want to be part of the community including our children's schooling

Response:

- Any child within the affected area already attending Kilbarchan Primary School will have the right to remain at the school.
- Every effort is made to address catchment anomalies and to ensure meaningful catchment boundaries are in place.

- If approved, this catchment review would take effect from August 2021 (primary 1 registration January 2021). Any child registering for primary 1 in January 2020 would be entitled to a place in their current catchment school.
- Kilbarchan Primary School currently accommodates a wider geographical area than the village of Kilbarchan.
- Renfrewshire Council's projected roll analysis demonstrates that additional pupil numbers generated from this new housing development and any other developments within East Fulton Primary School's catchment can be accommodated comfortably within the East Fulton Primary School Building.
- The catchment review is designed to provide the best possible distribution of school places to support the best possible outcomes for children and young people and Renfrewshire Council believes that this is achieved by ensuring Kilbarchan Primary School does not become overcrowded.
- The Council adheres to placing request legislation which is designed to ensure children within a catchment area have priority over those who do not.
- The Council must consider the impact of new housing on the educational provision within a catchment. It is assessed through an established process which considers educational impact relating to all planning applications.
- This catchment review is based on the impact on education provision and the proposal addresses the potential adverse effect of overcrowding within Kilbarchan Primary School. Any child within the affected area already attending Kilbarchan Primary School will have the right to remain at the school.
- If Kilbarchan Primary School could accommodate both the existing Brookfield area and the new development the catchment review would not be required.

Financial:

- Lack of resources
- Not enough teachers

Response:

- Schools are resourced on a per capita basis which means that funding will follow the child whichever school the child attends.

Safety and Transport:

- Parking already overflowing
- The proposed school is closer to the new houses & within safe walking distance.
- Traffic is already too busy
- Children from these houses need to be driven to Kilbarchan Primary.
- Extra unwanted traffic would cause safety issues
- Parking is shocking
- Traffic already too busy
- Traffic congestion is already extremely challenging outside Kilbarchan primary at drop off and pick up times with insufficient safety measures in place
- Other school is closer with safer routes
- Other schools are closer with safer routes
- There are traffic issues around the school which will be exacerbated by children that cannot walk to school being dropped off in cars.
- Kilbarchan is a ridiculous distance from these new developments especially as East Fulton is within walking distance
- Reduction in traffic

Response:

- As there is no safe walking route to either school, free school transport would be available to pupils living in this area if they are attending their catchment school.
- Consideration of safe travel routes; children's safety accessing the school grounds; and potential traffic congestion around both Primary Schools formed part of the rationale for the proposal to revise these catchment areas.

5.1.1 Comments and responses from Children

- C: It is noted that the children of Kilbarchan and East Fulton Primary Schools are supportive of this proposal. Details of their observations are attached as appendix 5 to this report.
- R: Renfrewshire Council welcomes the positive comments from children and young people and will ensure appropriate feedback is provided in relation to the Council's decision on this catchment review.

5.2 Proposal 2: Kilbarchan and Woodlands Primary Schools

Building Capacity:

- Kilbarchan primary is already close to capacity
- Kilbarchan PS already has a high occupancy rate and the additional pupils from these developments could push it beyond its capacity.
- School close to capacity already.
- Schools are already bursting at the seams, how are they going to handle more children.
- The school is already a busy school there are 30 kids in my daughter's class as it is.
- Woodlands is already almost at capacity. Adding more children will dilute the quality of teaching the staff currently deliver to children. Without extras resources this will have a negative impact on the pupils at woodlands primary.
- Concern that Kilbarchan is not big enough to extend to this development
- The school cannot cope with 2 new housing estates as well as the whole village.
- The kids and teachers are strained as it is with the amount of children
- The school isn't big enough to accommodate without being a disadvantage
- I am completely against this proposal I think it's an absolute joke to have any other kids start in woodlands as it is already packed full. It will put more strain on the kids and teachers. Having a special needs child myself I will oppose this completely
- If building continues in that area then there is an increased risk of children resident in Kilbarchan not being able to attend their local primary school.
- Schools in Linwood already busy.
- School too busy

Response:

- Renfrewshire Council's projected roll analysis demonstrates that additional pupil numbers generated from this new housing development can be accommodated comfortably within the Woodlands Primary School Building.
- Renfrewshire Council adheres to the regulations in place on maximum class sizes.

Class Size:

- Woodlands primary school pupils are already affected by large class sizes.
- The class sizes have increased this year.
- I don't think it would benefit the children and staff if the class size & number of pupils at the school increased.
- Woodlands classroom sizes are large already

Response:

- Renfrewshire Council adheres to the regulations in place on maximum class sizes.

Community:

- New development is in Linwood and feel catchment is appropriate
- The houses being built are more towards the Linwood area so it would make sense for the school catchment area to be Linwood
- Kilbarchan primary should accept children from Kilbarchan. New developments are in Linwood so should go to those schools.
- People who live in Kilbarchan should be guaranteed space at the school before those who don't live in the village.
- The houses are not in Kilbarchan.

Response:

- This catchment review is based on the impact on education provision and the proposal addresses the potential adverse effect of overcrowding within Kilbarchan Primary School.
- The new developments in question are currently within the boundary of Kilbarchan Primary School's catchment area.
- Renfrewshire Council's projected roll analysis demonstrates that additional pupil numbers generated from this new housing development can be accommodated comfortably within the Woodlands Primary School Building.
- The Council adheres to placing request legislation which is designed to ensure children within a catchment area have priority over those who do not.
- Renfrewshire Council must ensure the efficient use of its existing school buildings. Its projected roll analysis demonstrates that additional pupil numbers generated from this new housing development can be accommodated comfortably within the Woodlands Primary School Building and there is therefore no need for a new school in Brookfield.

Environmental:

- The children would have to be transported by bus to Kilbarchan Primary School which has an impact on the environment and an additional cost to Renfrewshire Council

Response:

- As there is no safe walking route to either school, free school transport would be available to pupils living in this area if they are attending their catchment school.

Learning and Teaching:

- As a parent with two children attending Woodlands currently, classes already seem overly large. My concern is that children will not get the education they deserve.
- School is understaffed as it is
- Classroom sizes are already more than teachers can handle, children aren't getting the proper education they deserve
- I don't want my child's education to suffer
- The kids already in the school are already suffering with the strain as head teachers are having to step in and help with reading and math work
- There needs to be a new school built or buses to take children to schools that aren't as busy. My child is in a class of 29 already, how are the teachers expected to cope with bigger classes and a school that is already bursting at the seams. There needs to be proper reviews of this done and the council need to understand the long term impact this can have on our children's education

Response:

- Renfrewshire Council adheres to the regulations in place on maximum class sizes.
- Schools are resourced on a per capita basis which means that funding will follow the child whichever school the child attends and staffing numbers will be relevant to the total number of pupils.
- Renfrewshire Council's quality improvement framework supports all schools to improve and develop. Both Schools produce annual standards and quality reports which demonstrate progress towards their agreed educational objectives through the efficient and prudent use of resources. Both schools have well developed self-evaluation and school improvement planning procedures which are informed by the whole school community and reviewed through the Council's quality improvement visits which are aligned to the quality indicators identified in How Good is Our School 4 (HGIOS4).
- Renfrewshire Council's projected roll analysis demonstrates that additional pupil numbers generated from this new housing development can be accommodated comfortably within the Woodlands Primary School Building.

Safety and Transport:

- The proposed school is closer to the new houses & within safe walking distance.
- Children from these houses need to be driven to Kilbarchan Primary.
- Extra unwanted traffic in already busy streets and bus route.
- There has already been a noticeable increase in the amount of traffic during the school run times.
- Traffic at the school is horrendous already
- Traffic congestion is already extremely challenging outside Kilbarchan primary at drop off and pick up times with insufficient safety measures in place
- Traffic is already absolutely hectic going through Linwood.
- There are traffic issues around the school which will be exacerbated by children that cannot walk to school being dropped off in cars.
- The village already suffers from increased numbers of traffic using the village as a short cut to get to Bridge of Weir and beyond. Traffic at the school is already an issue and more children will mean more traffic which will mean more pollution for our children and our village.
- The housing development is beside Linwood and within walking distance to East Fulton Primary
- It would be closer than other school's so it's easier to get to school's therefore easier to get a valid education.
- The residents of the new development deserve to take their kids to a school in walking distance.
- It would help for people who don't have a car.
- Traffic at school in/out hours will be too busy.

Response:

- Consideration of safe travel routes; children's safety accessing the school grounds; and potential traffic congestion around both Primary Schools formed part of the rationale for the proposal to revise these catchment areas. As there is no safe walking route to either school, free school transport would be available to pupils living in this area if they are attending their catchment school.
- The new development is geographically closer to Woodlands Primary School.

5.2.1 Comments and responses from Children

- C: It is noted that the children of Kilbarchan Primary Schools are supportive of this proposal and that pupils of Woodlands Primary School are not. Details of their observations are attached as appendix 5 to this report.
- R: Renfrewshire Council welcomes the positive comments and concerns intimated by the children of both schools and will ensure appropriate feedback is provided in relation to the Council's decision on this catchment review.

5.3 Proposal 3: St Margaret's and Our Lady of Peace Primary Schools

Building Capacity:

- Our Lady of Peace Primary is already a very busy school
- Linwood has 3 primary schools which are not full
- School overcrowding
- The building itself doesn't have enough space
- The school already appears to be at maximum capacity. Adding additional children will cause larger class sizes and reduce teachers' ability to give the attention needed.
- Linwood houses = Linwood schools

Response:

- Renfrewshire Council's projected roll analysis demonstrates that additional pupil numbers generated from these new housing developments can be accommodated comfortably within the Our Lady of Peace Primary School Building.
- Renfrewshire Council adheres to the regulations in place on maximum class sizes.

Community:

- The council should have thought about this prior to allowing so many houses to be built in an already busy area.

Response:

- This catchment review is based on the impact on education provision and the proposal addresses the potential adverse effect of overcrowding within St Margaret's Primary School. Any child within the affected area already attending St Margaret's Primary School will have the right to remain at the school.
- The Council must consider the impact of new housing on the educational provision within a catchment. It is assessed through an established process which considers educational impact relating to all planning applications.

Learning and Teaching:

- Too understaffed

Response:

- Schools are resourced on a per capita basis which means that funding will follow the child whichever school the child attends and staffing numbers will be relevant to the total number of pupils.

Safety and Transport:

- Safety of the children, traffic is already a serious problem outside the school. Adding additional pickups and drop offs would cause additional risk.
- Traffic

Response:

- Consideration of safe travel routes; children's safety accessing the school grounds; and potential traffic congestion around both Primary Schools formed part of the rationale for the proposal to revise these catchment areas.
- Where there is no safe walking route free school transport must be made available to pupils living within their designated catchment area.

5.3.1 Comments and responses from Children

C: It is noted that the children of St Margaret's and Our Lady of Peace Primary Schools are supportive of this proposal. Details of their observations are attached as appendix 5 to this report.

R: Renfrewshire Council welcomes the positive comments from children and young people and will ensure appropriate feedback is provided in relation to the Council's decision on this catchment review.

5.3.2 Comment and response from diocese of Paisley

C: Paisley Diocese appreciates the challenges facing Renfrewshire Council with regard to its school estate. Having viewed the proposals outlined in the current consultation paper and in particular the provisions for siblings of children in St Margaret's to opt to go there if so desired, the Diocese has no objections to the proposals.

R: Renfrewshire Council welcomes the positive comments from the Diocese.

5.4 Proposal 4: Johnstone and Linwood High Schools

Building Capacity:

Response:

- Renfrewshire Council's projected roll analysis demonstrates that additional pupil numbers generated from these new housing developments can be accommodated comfortably at Linwood High School.

Class Sizes:

Response:

- Renfrewshire Council adheres to the regulations in place on maximum class sizes.

Community:

- My daughter is already attending a Linwood School, East Fulton
- We are closer to the Linwood schools
- Her Grandparents Live in Linwood and would look after her
- All of her friends will attend this new school
- These new developments should be schooled at their closest school which is Linwood. The pupils can walk to this school so reducing vehicle trips and congestion

Response:

- All schools have anti bullying policies and approaches to support pupils affected by bullying; health and wellbeing is a priority for all establishments.
- This catchment review relates to the impact on education provision and the potential adverse effect of overcrowding within Kilbarchan Primary School. It is designed to ensure the transfer of all primary 7 children to the same secondary school.

- Established transition arrangements are in place to support all primary school children into secondary school.
- Renfrewshire Council's quality improvement framework supports all schools to improve and develop. Both Schools produce annual standards and quality reports which demonstrate progress towards their agreed educational objectives through the efficient and prudent use of resources. Both schools have well developed self-evaluation and school improvement planning procedures which are informed by the whole school community and reviewed through the Council's quality improvement visits which are aligned to the quality indicators identified in How Good is Our School 4 (HGIOS4).

Learning and Teaching:

- Linwood High is currently ranked last in Linwood for attainment. Adding more children to this school will likely increase the difficulties already faced by staff and pupils.

Response:

- Renfrewshire Council's quality improvement framework supports all schools to improve and develop. Both Schools produce annual standards and quality reports which demonstrate progress towards their agreed educational objectives through the efficient and prudent use of resources. Both schools have well developed self-evaluation and school improvement planning procedures which are informed by the whole school community and reviewed through the Council's quality improvement visits which are aligned to the quality indicators identified in How Good is Our School 4 (HGIOS4).
- Schools are resourced on a per capita basis which means that funding will follow the child whichever school the child attends and staffing numbers will be relevant to the total number of pupils and their specific needs.

Safety and Transport:

Response:

- Consideration of safe travel routes; children's safety accessing the school grounds; and potential traffic congestion are considered in relation to the proposal to revise these catchment areas.

5.4.1 Comments and responses from Young People

- C: It is noted that the young people of Johnstone and Linwood High Schools are supportive of this proposal. Details of their observations are attached as appendix 5 to this report.
- R: Renfrewshire Council welcomes the positive comments from children and young people and will ensure appropriate feedback is provided in relation to the Council's decision on this catchment review.

THIS IS A CONSULTATION DOCUMENT

Proposals relating to:

The revision of catchment areas affecting Kilbarchan and East Fulton Primary Schools

1. Introduction

- 1.1 The Schools (Consultation) (Scotland) Act 2010 (“the 2010 Act”) makes provision for the consultation process that is to apply re: various proposals made by Councils for schools. The principal purpose of the 2010 Act is to provide strong, accountable statutory consultation practices and procedures that local authorities must apply to their handling of all proposals for school closures and other major changes to schools. These consultation processes are expected to be robust, open, transparent and fair, and seen to be so. They are also expected to be consistent across Scotland. The 2010 Act applies to a wide range of changes to the school estate, referred to as “relevant proposals”.
- 1.2 This document seeks approval to consult on the proposal to revise catchment arrangements affecting Kilbarchan and East Fulton Primary Schools. In accordance with Section 2 and Schedule 1, Para. 4 of the 2010 Act, a proposal to vary any admission arrangements for a school, including a proposal to alter or establish the catchment area of a school, is a relevant proposal for the purposes of the 2010 Act. This proposal is therefore a relevant proposal for the purposes of the 2010 Act.
- 1.3 This is the proposal paper, produced by the Council in accordance with the terms of Sections 1 and 4 of the 2010 Act. This proposal paper must:
 - a) set out the details of the relevant proposal;
 - b) propose a date for implementation of the proposal;
 - c) contain the educational benefits statement in respect of the proposal;
 - d) refer to such evidence or other information in support of (or otherwise relevant in relation to) the proposal as the Council considers appropriate; and
 - e) give a summary of the process provided for in the 2010 Act.

The Council must do the following:

- a) publish this proposal paper in electronic and printed form;
- b) make the paper, and (so far as practicable) a copy of any separate documentation that it refers to, available for inspection at all reasonable times and without charge:

- (i) at its head office and on its website; and
- (ii) at any affected school or at a public library or some other suitable place within the vicinity of the school.
- c) provide without charge the information contained in this proposal paper:
 - (i) to such persons as may reasonably require that information in another form; and
 - (ii) in such other form as may reasonably be requested by such persons.
- d) advertise the publication of the proposal paper by such means as it considers appropriate.

2 Correction of the proposal paper

- 2.1 Where, during the consultation period, the Council has been notified of an alleged omission of relevant information from a proposal paper or an alleged inaccuracy in a proposal paper the Council must proceed as follows:
- a) determine if relevant information has (in its opinion) been omitted and whether there is (in fact) an inaccuracy;
 - b) inform the notifier of its determination under paragraph (a), and the reasons for that determination;
 - c) inform the notifier as to the action (if any) it is taking and of the reasons why it is, or is not, taking such action; and
 - d) invite the notifier to make representations to the Council if the notifier disagrees with the Council's determination under paragraph (a) or its decision as to whether to take action.
- 2.2 Where the notifier makes further representation under paragraph 2(d) above, the Council may make a fresh determination as to whether relevant information has been omitted or there is (in fact) an inaccuracy and the Council may make a fresh decision as to whether to take action. The Council must inform the notifier if it makes a fresh determination referred to above, or if it makes a fresh decision as to whether to take action.
- 2.3 Where, having been notified by another person as described above, the Council determines that:
- a) relevant information has been omitted from the proposal paper, or
 - b) there is (in fact) an inaccuracy in the proposal paper; and
 - c) where the Council discovers, during the consultation period that relevant information has been omitted from a proposal paper or discovers an inaccuracy in a proposal paper, the Council must proceed as follows:
- 2.4 Where the information that has been omitted or the inaccuracy relates to a material consideration relevant to the Council's decision as to implementation of the proposal, it must:

- (i) publish a corrected proposal paper,
- (ii) give revised notice in accordance with the 2010 Act and
- (iii) send a copy of the corrected paper to Education Scotland, or
- (iv) issue a notice to the relevant consultees and Education Scotland providing the omitted information or, as the case may be, correcting the inaccuracy, and, if the Council considers it appropriate, extending the consultation period by such period as is reasonable by reference to the significance of the information provided or, as the case may be, the nature of the correction.

2.5 Where the information that has been omitted or the inaccuracy does not relate to a material consideration, the Council may, but is not obliged to, take steps (i)-(iii) or (iv) described above, and may also take no further action, except to report the inaccuracy/omission as required by the 2010 Act in the consultation report, which is referred to in more detail below.

2.6 Where, after the end of the consultation period, the Council issues a notice to the relevant consultees and Education Scotland providing the omitted information or correcting the inaccuracy, that notice may, instead of extending the consultation period, specify such further period during which representations may be made on the proposal as is reasonable by reference to the significance of the information provided or, as the case may be, the nature of the correction. Any such further period is to be treated as part of the consultation period for the purposes of the 2010 Act.

3 Consultation arrangements

- 3.1 As confirmed above, the present proposal is a relevant proposal for the purposes of the 2010 Act, and therefore the Council will adhere to the consultation process in the 2010 Act.
- 3.2 This consultation document provides background information to the catchment review. It details the proposal and indicates a timeframe for implementation should the proposal be approved.
- 3.3 This consultation document also includes the Council's Educational Benefits Statement.

4 Rationale for catchment review

- 4.1 In the report "Developing the School Estate Management Plan (SEMP 2020)" it was noted that the new housing development at Weir's Wynd, at the Merchiston Hospital site, would put pressure on accommodation at Kilbarchan Primary School and that this could result in the pupil roll at the school increasing beyond the building's operational capacity.

- 4.2 It was also identified that East Fulton Primary School could accommodate the number of non-denominational pupils living in this new housing development and it was therefore recommended that a formal consultation be undertaken to review catchment arrangements affecting these schools.
- 4.3 At this time, the current distribution of children living in this development shows that 2 of 16 children are choosing to attend Kilbarchan Primary School.
- 4.4 Another small housing development, "Houston Station House", has been identified within the Kilbarchan Primary School catchment area. This development is immediately adjacent to the Merchiston Hospital site and while it may only generate a small number of pupils it should be included as part of the formal consultation on this catchment review as it contributes to the capacity challenges noted above.
- 4.5 Assessment of planning data has been undertaken and this exercise has identified that the new housing developments could generate approximately 61 additional primary school pupils over a 6 year period.
- 4.6 The undernoted table demonstrates that these additional pupils (when combined with the pupils generated from the development at Johnstone Hospital) could put excessive pressure on the accommodation at Kilbarchan Primary School but that the increased number of pupils could be accommodated more comfortably within East Fulton Primary School.

Kilbarchan Primary School	2019/20	2020/21	2021/22	2022/23	2023/24	2024/25
Projection excluding housing developments	266	276	294	300	307	300
Occupancy excluding housing developments	76%	78%	84%	85%	87%	85%
Projection including all developments	281	310	350	374	391	389
Percentage occupancy level including all developments	80%	88%	99%	106%	111%	110%
Pupils rezoned to East Fulton Primary School (61)	10	10	13	13	10	5
<i>Pupils rezoned to Woodlands Primary School (28)</i>	<i>5</i>	<i>9</i>	<i>9</i>	<i>5</i>	<i>0</i>	<i>0</i>
East Fulton Primary School	2019/20	2020/21	2021/22	2022/23	2023/24	2024/25
Projection excluding housing developments	216	221	228	227	215	208
Occupancy excluding housing developments	61%	63%	65%	64%	61%	59%
Projection including all developments	226	241	261	273	271	269
Percentage occupancy level including all developments	64%	68%	74%	78%	77%	76%
Pupils rezoned from Kilbarchan Primary School (61)	10	10	13	13	10	5

- 4.7 Pupils living at addresses affected by this catchment review are currently entitled to free school transport if they are currently attending Kilbarchan Primary School. If this proposal is approved all pupils living at these addresses would be entitled to free school transport to East Fulton Primary School.
- 4.8 It is therefore recommended that the catchment boundary between these schools be amended to remove these housing developments from Kilbarchan Primary School's catchment area and to incorporate them into East Fulton Primary School's catchment area.
-

5 Educational benefits statement

- 5.1 Under the 2010 Act the Council must prepare an educational benefits statement (EBS) in accordance with Sections 1 and 3 of the 2010 Act.
- 5.2 The EBS must include the following:
- a) the Council's assessment of the likely educational effects of a relevant proposal (if implemented) on:
 - (i) the pupils of any affected school;
 - (ii) any other users of the school's facilities;
 - (iii) any children who would (in the future but for implementation) be likely to become pupils of the school; or
 - (iv) the pupils of any other schools in the Council's area,
 - b) the Council's assessment of any other likely effects of the proposal (if implemented),
 - c) an explanation of how the Council intends to minimise or avoid any adverse educational effects that may arise from the proposal (if implemented),
 - d) a description of the educational benefits which the Council believes will result from implementation of the proposal (with reference to the persons whom it believes will derive them), as well as the Council's reasons for coming to those beliefs.
- 5.3 The following paragraphs detail the Council's Educational Benefits Statement:
- 5.3.1 All pupils affected by this catchment review would be entitled to continue attending the school they are currently in.
- 5.3.2 Children's Services would provide transition support to any pupils opting to change school as a result of this proposal.
- 5.3.3 If a pupil is entitled to free school transport, in line with the Council's transport policy, then this entitlement would also continue.

- 5.3.4 Siblings of those pupils attending Kilbarchan Primary School would be entitled to attend this school with their sibling as long as their sibling is registered in the school when they enrol.
- 5.3.5 Free school transport for new primary 1 pupils would only be provided in instances where the pupil enrolls in the school at a time when their sibling still attends the school and where that sibling is entitled to free school transport.
- 5.3.6 Renfrewshire Council's quality improvement framework supports all schools to improve and develop. Kilbarchan and East Fulton Primary Schools produce annual standards and quality reports which demonstrate progress towards their agreed educational objectives through the efficient and prudent use of resources. Both schools have well developed self-evaluation and school improvement planning procedures which are informed by the whole school community and reviewed through the Council's quality improvement visits which are aligned to the quality indicators identified in How Good is Our School 4 (HGIOS4).
- 5.3.7 This catchment review is necessary as the increased number of pupils would put excessive pressure on the accommodation at Kilbarchan Primary School.
- 5.3.8 The increase in numbers could result in the pupil roll increasing beyond Kilbarchan Primary School's operational capacity, impacting on spaces for teacher directed learning; breakout areas for independent or small group learning; and areas to facilitate the range of learning experiences necessary for the development of meta skills.
- 5.3.9 The capacity of East Fulton Primary School is 352 and the maximum projected pupil roll, including those pupils potentially generated from these new housing developments is 273. This means that the accommodation at East Fulton Primary School can support the full range of curricular and extra-curricular activity and this increase in pupil numbers would not adversely affect the delivery of the curriculum. This proposal will assist with effective class organisation models to support learning and teaching.
- 5.3.10 The accommodation at East Fulton Primary School can support the full range of curricular and extra-curricular activity and it would not be adversely affected by this increase in pupil numbers. However, Kilbarchan Primary School's playground and social gathering areas, which provide for different kinds of play and social interaction, could be adversely affected in terms of space to play; access to outdoor P.E.; participation in outdoor learning opportunities relating to the natural environment and environmental issues; and extra-curricular physical activity.
- 5.3.11 The accommodation at East Fulton Primary School provides ample support spaces to support the wellbeing of all pupils however, Kilbarchan Primary School's capacity to provide quiet spaces to support the emotional wellbeing of pupils with additional support needs could be compromised by increased numbers.

5.3.12 The additional number of pupils at Kilbarchan Primary School would also impact on dining, creating pressure on the existing facilities. The accommodation at East Fulton Primary School provides ample dining facilities for all pupils.

5.4 Our assessment of any other likely effects of the proposal (if implemented).

- As is the case in any consultation of this scale, there may be those who perceive their situation to be affected positively, those who perceive the changes as negatively affecting their situation, and those for whom no perceived change is anticipated.
- For example, a child who currently attends Kilbarchan Primary School who has siblings who may wish to attend this school in the future may have concerns; if the proposal goes ahead and they are deemed to now be living in the East Fulton Primary School catchment area. These families would neither be advantaged nor disadvantaged as provision is being made for them to attend, so long as siblings are in attendance at the time of enrolment.

5.5 How we would intend to minimise or avoid any adverse effects that may arise from the proposal (if implemented).

A right for siblings of those affected by the change has been included. That is, a child who attends Kilbarchan primary school currently and has a sibling who wishes to attend in the future are being afforded provision to do so; should the proposal be agreed.

5.6 The benefits, which we believe, would result from implementation of this proposal.

In addition to the benefits noted in 5.3.1 – 5.3.8 above, Children's Services believe that reviewing this catchment area would enable the Council to plan more effectively and robustly as the challenge of rising rolls within the authority continues to emerge.

6. Impact on schools and their communities

6.1 Catchment review forms part of the Council's School Estate Management Planning process and equality impact assessment is central to this approach.

6.2 The recommendations contained within this report will be assessed in relation to their potential impact on equalities and human rights as part of the consultative process.

6.3 There is no impact on community council boundaries.

6.4 Both schools will have capacity to serve communities.

7. Involvement of Education Scotland

- 7.1 A copy of this proposal has been sent to Education Scotland.
- 7.2 At the end of the formal consultation period Children's Services will send Education Scotland the following:
- a) a copy of all relevant written representations that are received from any person during the consultation period;
 - b) a summary of any oral representations made by any person during the public meeting; and
 - c) a copy of any other relevant documentation, as available and so far, as practicable.
- 7.3 Education Scotland will provide the Council with a report on the educational aspects of this proposal. This report will be submitted to the Council no later than 3 weeks after Children's Services have sent them all of the representations and documents noted above, or such longer period as the Council may agree with Education Scotland.
- 7.4 In preparing their report, Education Scotland may visit establishments affected by the proposal and may make reasonable enquiries of such persons (both in the in the establishments and outwith) as they consider appropriate.

8. Consultation report

- 8.1 After receiving the report from Education Scotland, Children's Services will review the proposal having regard (in particular) to the following:
- a) written representations received by the Council from any person during the consultation period;
 - b) oral representations received by the Council from any person at the public meeting; and
 - c) the report provided by Education Scotland.
- 8.2 Thereafter the service will prepare a consultation report for consideration by the education and children's services policy board.
- 8.3 The consultation report will contain the following:
- a) a record of the total number of any written representations made to the Council (by any person) on the proposal during the consultation period;

- b) a summary of:
 - (i) those written representations; and
 - (ii) any oral representations made to it (by any person) at the public meeting.
- c) a statement of the Council's response to:
 - (i) those written and oral representations; and
 - (ii) Education Scotland's report.
- d) a copy of that report
- e) a statement explaining how the Council complied with its obligation to review the relevant proposal as described above.

8.4 The consultation report will also include the following:

- a) details of any omission/inaccuracy in the proposal paper, or (as the case may be) any alleged omission/inaccuracy, (including a statement of the Council's opinion on it);
- b) a statement of the action taken in respect of the omission or inaccuracy, or (as the case may be) the alleged omission/inaccuracy, or, if no action has been taken, of that fact (and why); and
- c) any representations made to the Council where the person who made the notification re: omission/inaccuracy disagreed with the Council's determination as to whether there had been an omission/inaccuracy, or its decision as to whether to take action.

8.5 The Council must:

- a) publish the consultation report in both electronic and printed form;
- b) make the report available for inspection at all reasonable times and without charge:
 - (i) at its head office and on its website; and
 - (ii) at any affected school or at a public library or some other suitable place within the vicinity of the school.
- c) provide without charge the information contained in the consultation report:
 - (i) to such persons as may reasonably require that information in another form; and
 - (ii) in such other form as may reasonably be requested by such persons.
- d) inform any person who during the consultation period made written representations on the relevant proposal of the publication of the consultation report; and

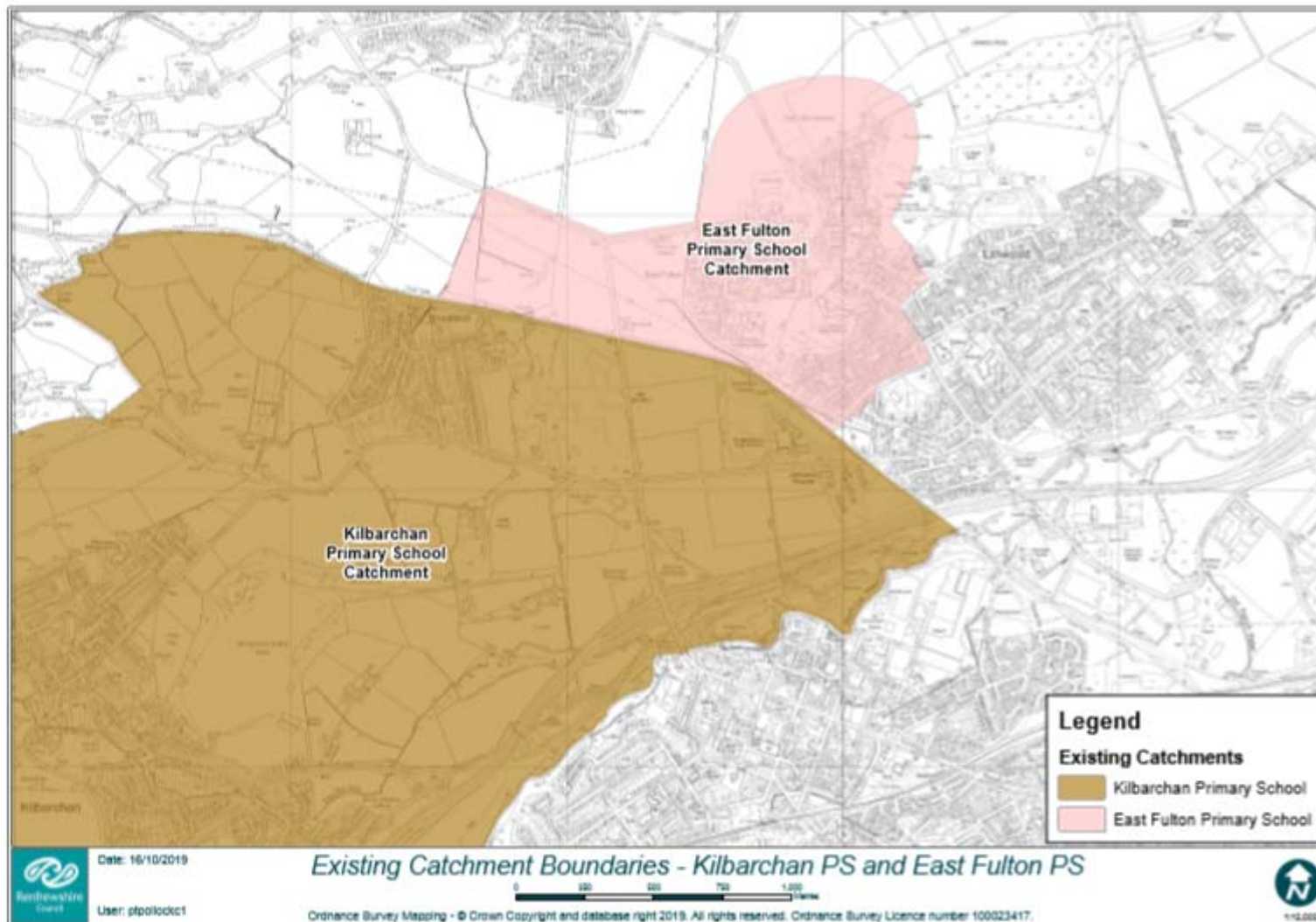
- e) advertise the publication of the consultation report by such means as it considers appropriate.

8.6 The time line and summary of the consultation process in respect of this proposal is set out below:

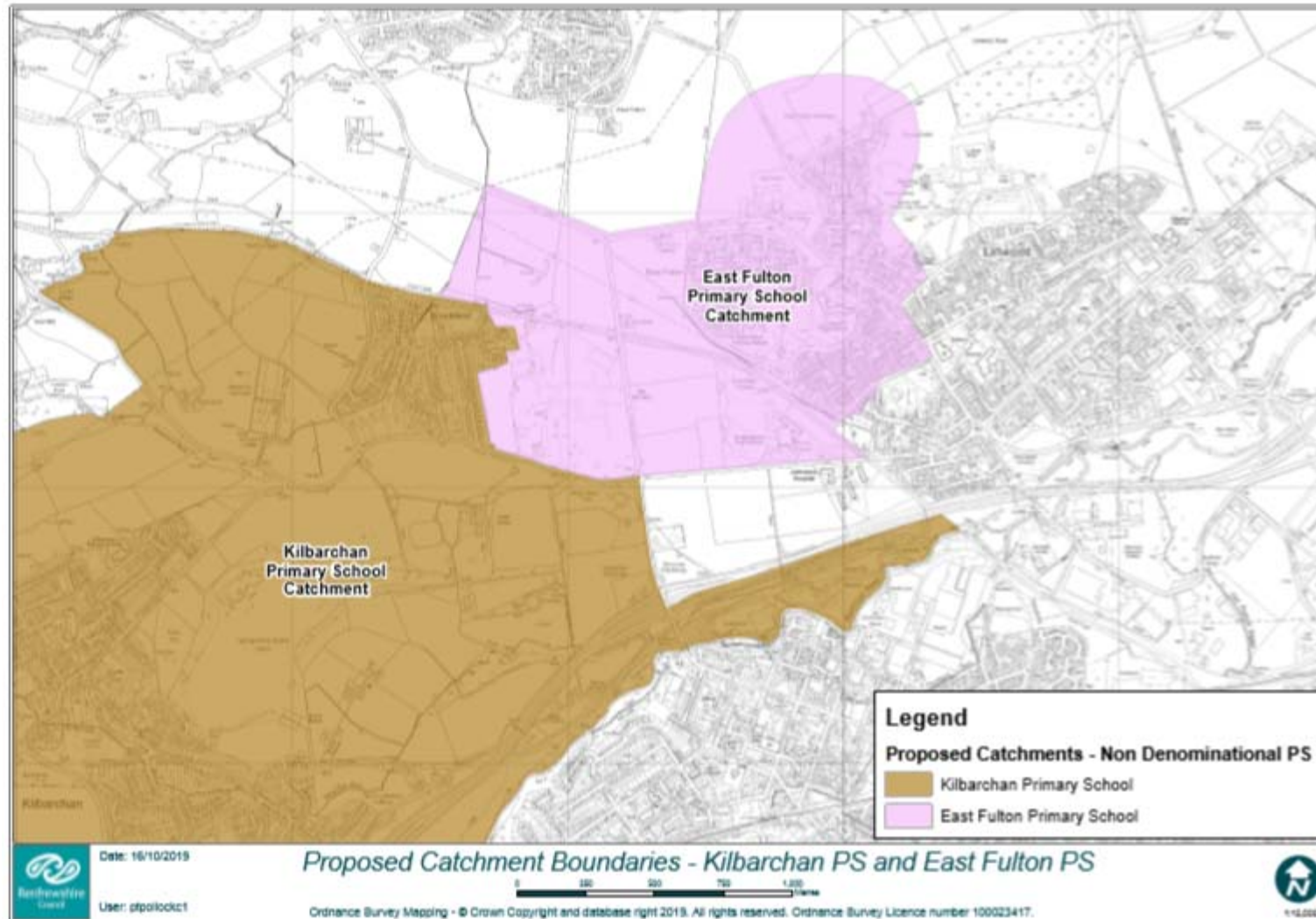
Activity	Date
Approval for consultation sought from Education and Children's Services policy board	31 October 2019
Consultation document to be issued outlining the proposal to: <ul style="list-style-type: none"> the parent council or combined parent council of any affected schools; the parents of the pupils at any affected school; the parents of any children who would be likely to become pupils at the affected schools expected by the education authority to attend any affected school within 2 years of the date of publication of the proposal paper; the pupils at any affected school (in so far as the education authority considers them to be of a suitable age and maturity); the staff (teaching and other) at any affected school; any trade union which appears to the education authority to be representative of the staff (teaching and other) at any affected school; the community council (if any); the community planning partnership for the area of the local authority in which any affected school is situated and any other community planning partnership that the education authority considers relevant; any other education authority that the education authority considers relevant; and any other community groups using any of the affected schools. 	18 November 2019
Advert to advise of public consultation meeting and the commencement of the formal consultation period issued via local press.	18 November 2019
<ul style="list-style-type: none"> Public consultation meeting, covering all proposals, held to consult with affected communities in Woodlands Primary School at 6.30pm; and Questionnaire to go live on the Council website. 	26 November 2019
Public consultation period ends 6 weeks after the date of the public meeting. The total period excludes any school holidays or in-service days.	21 January 2020
Report to Education Scotland on outcome of consultation.	4 February 2020
Response from Education Scotland on outcome of consultation.	25 February 2020

Consultation response report (including Education Scotland response) presented to Education and Children's Services policy board meeting stating consultation outcomes and making final recommendation.	August 2020
Copy of proposal paper and consultation response report sent to Scottish Ministers within 6 days of education and children's services policy board approval.	August 2020

Existing Catchment – Kilbarchan and East Fulton Primary Schools



Proposed Catchment – Kilbarchan and East Fulton Primary Schools



Catchment Review: Streets Affected – Kilbarchan Primary School with East Fulton Primary School

Addresses at September 2019

Barochan Lane
Fairlie Road
Glendale Wynd
Gowanlea Place
Merchiston Drive
Merchiston Oval
Nethermains Avenue
Newfield Way
Whitebeam Grove
Whitehouse Gardens
Windyhill Crescent

Note: This development is still under construction and more addresses may be added to this list, which fall within the boundary of the developments.

Catchment Review: Kilbarchan Primary School with East Fulton Primary School

Numbers currently attending Renfrewshire schools from development:

School	Number of pupils affected
Bridge of Weir Primary School	1
Cochrane Castle Primary School	2
East Fulton Primary School	4
Kilbarchan Primary School	2
St Fillan's Primary School	3
West Primary School	2
Williamsburgh Primary School	2
Total pupils (September 2019)	16

THIS IS A CONSULTATION DOCUMENT

Proposal relating to:

The revision of catchment areas affecting Kilbarchan and Woodlands Primary Schools

1. Introduction

- 1.1 The Schools (Consultation) (Scotland) Act 2010 (“the 2010 Act”) makes provision for the consultation process that is to apply re: various proposals made by Councils for schools. The principal purpose of the 2010 Act is to provide strong, accountable statutory consultation practices and procedures that local authorities must apply to their handling of all proposals for school closures and other major changes to schools. These consultation processes are expected to be robust, open, transparent and fair, and seen to be so. They are also expected to be consistent across Scotland. The 2010 Act applies to a wide range of changes to the school estate, referred to as “relevant proposals”.
- 1.2 This document seeks approval to consult on the proposal to revise catchment arrangements affecting Kilbarchan and Woodlands Primary Schools. In accordance with Section 2 and Schedule 1, Para. 4 of the 2010 Act, a proposal to vary any admission arrangements for a school, including a proposal to alter or establish the catchment area of a school, is a relevant proposal for the purposes of the 2010 Act. This proposal is therefore a relevant proposal for the purposes of the 2010 Act.
- 1.3 This is the proposal paper, produced by the Council in accordance with the terms of Sections 1 and 4 of the 2010 Act. This proposal paper must:
 - a) set out the details of the relevant proposal;
 - b) propose a date for implementation of the proposal;
 - c) contain the educational benefits statement in respect of the proposal;
 - d) refer to such evidence or other information in support of (or otherwise relevant in relation to) the proposal as the Council considers appropriate; and
 - e) give a summary of the process provided for in the 2010 Act.

The Council must do the following:

- e) publish this proposal paper in electronic and printed form;
- f) make the paper, and (so far as practicable) a copy of any separate documentation that it refers to, available for inspection at all reasonable times and without charge:

- (iii) at its head office and on its website; and
 - (iv) at any affected school or at a public library or some other suitable place within the vicinity of the school.
 - g) provide without charge the information contained in this proposal paper:
 - (iii) to such persons as may reasonably require that information in another form; and
 - (iv) in such other form as may reasonably be requested by such persons.
 - h) advertise the publication of the proposal paper by such means as it considers appropriate.
-

2 Correction of the proposal paper

- 2.1 Where, during the consultation period, the Council has been notified of an alleged omission of relevant information from a proposal paper or an alleged inaccuracy in a proposal paper the Council must proceed as follows:
- a) determine if relevant information has (in its opinion) been omitted and whether there is (in fact) an inaccuracy;
 - b) inform the notifier of its determination under paragraph (a), and the reasons for that determination;
 - c) inform the notifier as to the action (if any) it is taking and of the reasons why it is, or is not, taking such action; and
 - d) invite the notifier to make representations to the Council if the notifier disagrees with the Council's determination under paragraph (a) or its decision as to whether to take action.
- 2.2 Where the notifier the notifier makes further representation under paragraph 2d) above, the Council may make a fresh determination as to whether relevant information has been omitted or there is (in fact) an inaccuracy and the Council may make a fresh decision as to whether to take action. The Council must inform the notifier if it makes a fresh determination referred to above, or if it makes a fresh decision as to whether to take action.
- 2.3 Where having been notified by another person as described above, the Council determines that:
- d) relevant information has been omitted from the proposal paper, or
 - e) there is (in fact) an inaccuracy in the proposal paper; and
 - f) where the Council discovers, during the consultation period that relevant information has been omitted from a proposal paper or discovers an inaccuracy in a proposal paper, the Council must proceed as follows:

- 2.4 Where the information that has been omitted or the inaccuracy relates to a material consideration relevant to the Council's decision as to implementation of the proposal, it must:
- (v) publish a corrected proposal paper,
 - (vi) give revised notice in accordance with the 2010 Act and
 - (vii) send a copy of the corrected paper to Education Scotland, or
 - (viii) issue a notice to the relevant consultees and Education Scotland providing the omitted information or, as the case may be, correcting the inaccuracy, and, if the Council considers it appropriate, extending the consultation period by such period as is reasonable by reference to the significance of the information provided or, as the case may be, the nature of the correction.
- 2.5 Where the information that has been omitted or the inaccuracy does not relate to a material consideration, the Council may, but is not obliged to, take steps (i)-(iii) or (iv) described above, and may also take no further action, except to report the inaccuracy/omission as required by the 2010 Act in the consultation report, which is referred to in more detail below.
- 2.6 Where, after the end of the consultation period, the Council issues a notice to the relevant consultees and Education Scotland providing the omitted information or correcting the inaccuracy, that notice may, instead of extending the consultation period, specify such further period during which representations may be made on the proposal as is reasonable by reference to the significance of the information provided or, as the case may be, the nature of the correction. Any such further period is to be treated as part of the consultation period for the purposes of the 2010 Act.
-

3. Consultation arrangements

- 3.1 As confirmed above, the present proposal is a relevant proposal for the purposes of the 2010 Act, and therefore the Council will adhere to the consultation process in the 2010 Act.
- 3.2 This consultation document provides background information to the catchment review. It details the proposal and indicates a timeframe for implementation should the proposal be approved.
- 3.3 This consultation document also includes the Council's Educational Benefits Statement.
-

4. Rationale for catchment review

- 4.1 In the report "Developing the School Estate Management Plan (SEMP 2020)" it was noted that the new housing development at Weir's Wynd, at the Merchiston Hospital site, would put pressure on accommodation at Kilbarchan Primary School and that this could result in the pupil roll at the school increasing beyond the building's operational capacity.

- 4.2 Further assessment of housing development in this area has identified a requirement to consider further catchment reviews which would affect Kilbarchan and Woodlands Primary Schools.
- 4.3 The new housing development at “Johnstone Hospital” could generate approximately 28 additional primary school pupils over a 6 year period. These additional pupils, when combined with the number of additional pupils from other new developments, could put excessive pressure on the accommodation at Kilbarchan Primary School.
- 4.4 The undernoted table demonstrates that the increased number of pupils from the new housing development at “Johnstone Hospital” could be accommodated more comfortably within Woodlands Primary School.

Kilbarchan Primary School	2019/20	2020/21	2021/22	2022/23	2023/24	2024/25
Projection excluding housing developments	266	276	294	300	307	300
Occupancy excluding housing developments	76%	78%	84%	85%	87%	85%
Projection including all developments	281	310	350	374	391	389
Percentage occupancy level including all developments	80%	88%	99%	106%	111%	110%
Pupils rezoned to Woodlands Primary School (28)	10	10	13	13	10	5
<i>Pupils rezoned to East Fulton Primary School (61)</i>	5	9	9	5	0	0
Woodlands Primary School	2019/20	2020/21	2021/22	2022/23	2023/24	2024/25
Projection excluding housing developments	325	328	326	313	332	332
Occupancy excluding housing developments	71%	71%	71%	68%	72%	72%
Projection including all developments	330	342	349	341	360	360
Percentage occupancy level including all developments	72%	74%	76%	74%	78%	78%
Pupils rezoned from Kilbarchan Primary School (28)	5	9	9	5	0	0

- 4.5 Pupils living at addresses affected by this catchment review would be entitled to free school transport if they attended Kilbarchan Primary School. If this proposal is approved all pupils living at these addresses would be within 1 mile's walking distance of Woodlands Primary School and therefore would not be entitled to free school transport.
- 4.6 It is recommended that the catchment boundary between these schools be amended to remove this housing development from Kilbarchan Primary School's catchment area and to incorporate it into Woodlands Primary School's catchment area.
-

5. Educational benefits statement

5.1 Under the 2010 Act the Council must prepare an educational benefits statement (EBS) in accordance with Sections 1 and 3 of the 2010 Act.

5.2 The EBS must include the following:

- a) the Council's assessment of the likely educational effects of a relevant proposal (if implemented) on:
 - (i) the pupils of any affected school;
 - (ii) any other users of the school's facilities;
 - (iii) any children who would (in the future but for implementation) be likely to become pupils of the school; or
 - (iv) the pupils of any other schools in the Council's area,
- b) the Council's assessment of any other likely effects of the proposal (if implemented),
- c) an explanation of how the Council intends to minimise or avoid any adverse educational effects that may arise from the proposal (if implemented),
- d) a description of the educational benefits which the Council believes will result from implementation of the proposal (with reference to the persons whom it believes will derive them), as well as the Council's reasons for coming to those beliefs.

5.3 The following paragraphs detail the Council's Educational Benefits Statement:

5.3.1 All pupils affected by this catchment review would be entitled to continue attending the school they are currently in.

5.3.2 Children's Services would provide transition support to any pupils opting to change school as a result of this proposal.

5.3.3 If a pupil is entitled to free school transport, in line with the Council's transport policy, then this entitlement would also continue.

5.3.4 Siblings of those pupils attending Kilbarchan Primary School would be entitled to attend this school with their sibling as long as their sibling is registered in the school when they enrol.

5.3.5 Free school transport for new primary 1 pupils would only be provided in instances where the pupil enrolls in the school at a time when their sibling still attends the school and where that sibling is entitled to free school transport.

- 5.3.6 Renfrewshire Council's quality improvement framework supports all schools to improve and develop. Kilbarchan and Woodlands Primary Schools produce annual standards and quality reports which demonstrate progress towards their agreed educational objectives through the efficient and prudent use of resources. Both schools have well developed self-evaluation and school improvement planning procedures which are informed by the whole school community and reviewed through the Council's quality improvement visits which are aligned to the quality indicators identified in How Good is Our School 4 (HGIOS4).
- 5.3.7 This catchment review is necessary as the increased number of pupils would put excessive pressure on the accommodation at Kilbarchan Primary School.
- 5.3.8 The increase in numbers could result in the pupil roll increasing beyond Kilbarchan Primary School's operational capacity, impacting on spaces for teacher directed learning; breakout areas for independent or small group learning; and areas to facilitate the range of learning experiences necessary for the development of meta skills.
- 5.3.9 The capacity of Woodlands Primary School is 459 and the maximum projected pupil roll, including those pupils potentially generated from these new housing developments is 360. This means that the accommodation at Woodlands Primary School can support the full range of curricular and extra-curricular activity and this increase in pupil numbers would not adversely affect the delivery of the curriculum. This proposal will assist with effective class organisation models to support learning and teaching.
- 5.3.10 The accommodation at Woodlands Primary School can support the full range of curricular and extra-curricular activity and it would not be adversely affected by this increase in pupil numbers. However, Kilbarchan Primary School's playground and social gathering areas, which provide for different kinds of play and social interaction, could be adversely affected in terms of space to play; access to outdoor P.E.; participation in outdoor learning opportunities relating to the natural environment and environmental issues; and extra-curricular physical activity.
- 5.3.11 The accommodation at Woodlands Primary School provides ample support spaces to support the wellbeing of all pupils however, Kilbarchan Primary School's capacity to provide quiet spaces to support the emotional wellbeing of pupils with additional support needs could also be compromised.
- 5.3.12 The additional number of pupils at Kilbarchan Primary School would also impact on dining, creating pressure on the existing facilities. The accommodation at Woodlands Primary School provides ample dining facilities for all pupils.
- 5.4 Our assessment of any other likely effects of the proposal (if implemented).

As is the case in any consultation of this scale, there may be those who perceive their situation to be affected positively, those who perceive the changes as negatively affecting their situation, and those for whom no perceived change is anticipated.

For example, a child who currently attends Kilbarchan Primary School who has siblings who may wish to attend this school in the future may have concerns; if the proposal goes ahead and they are deemed to now be living in the Woodlands Primary School catchment area. These families would neither be advantaged nor disadvantaged as provision is being made for them to attend, so long as siblings are in attendance at the time of enrolment.

- 5.5 How we would intend to minimise or avoid any adverse effects that may arise from the proposal (if implemented).

A right for siblings of those affected by the change has been included. That is, a child who attends Kilbarchan Primary School currently and has a sibling who wishes to attend in the future are being afforded provision to do so; should the proposal be agreed.

- 5.6 The benefits, which we believe, would result from implementation of this proposal.

In addition to the benefits noted in 5.3.1 – 5.3.8 above, Children's Services believe that reviewing this catchment area would enable the Council to plan more effectively and robustly as the challenge of rising rolls within the authority continues to emerge.

6. Impact on schools and their communities

- 6.1 Catchment review forms part of the Council's School Estate Management Planning process and equality impact assessment is central to this approach.
- 6.2 The recommendations contained within this report will be assessed in relation to their potential impact on equalities and human rights as part of the consultative process.
- 6.3 There is no impact on community council boundaries.
- 6.4 Both schools will have capacity to serve communities.

7. Involvement of Education Scotland

- 7.1 A copy of this proposal has been sent to Education Scotland.
- 7.2 At the end of the formal consultation period Children's Services will send Education Scotland the following:

- a) a copy of all relevant written representations that are received from any person during the consultation period;
 - b) a summary of any oral representations made by any person during the public meeting; and
 - c) a copy of any other relevant documentation, as available and so far, as practicable.
- 7.3 Education Scotland will provide the Council with a report on the educational aspects of this proposal. This report will be submitted to the Council no later than 3 weeks after Children's Services have sent them all of the representations and documents noted above, or such longer period as the Council may agree with Education Scotland.
- 7.4 In preparing their report, Education Scotland may visit establishments affected by the proposal and may make reasonable enquiries of such persons (both in the in the establishments and outwith) as they consider appropriate.
-

8. Consultation report

- 8.1 After receiving the report from Education Scotland, Children's Services will review the proposal having regard (in particular) to the following:
- a) written representations received by the Council from any person during the consultation period;
 - b) oral representations received by the Council from any person at the public meeting; and
 - c) the report provided by Education Scotland.
- 8.2 Thereafter the service will prepare a consultation report for consideration by the education and children's service policy board.
- 8.3 The consultation report will contain the following:
- a) a record of the total number of any written representations made to the Council (by any person) on the proposal during the consultation period;
 - b) a summary of:
 - (i) those written representations; and
 - (ii) any oral representations made to it (by any person) at the public meeting.
 - c) a statement of the Council's response to:
 - (i) those written and oral representations; and
 - (ii) Education Scotland's report.
 - d) a copy of that report

- e) a statement explaining how the Council complied with its obligation to review the relevant proposal as described above.

8.4 The consultation report will also include the following:

- a) details of any omission/inaccuracy in the proposal paper, or (as the case may be) any alleged omission/inaccuracy, (including a statement of the Council's opinion on it);
- b) a statement of the action taken in respect of the omission or inaccuracy, or (as the case may be) the alleged omission/inaccuracy, or, if no action has been taken, of that fact (and why); and
- c) any representations made to the Council where the person who made the notification re: omission/inaccuracy disagreed with the Council's determination as to whether there had been an omission/inaccuracy, or its decision as to whether to take action.

8.5 The Council must:

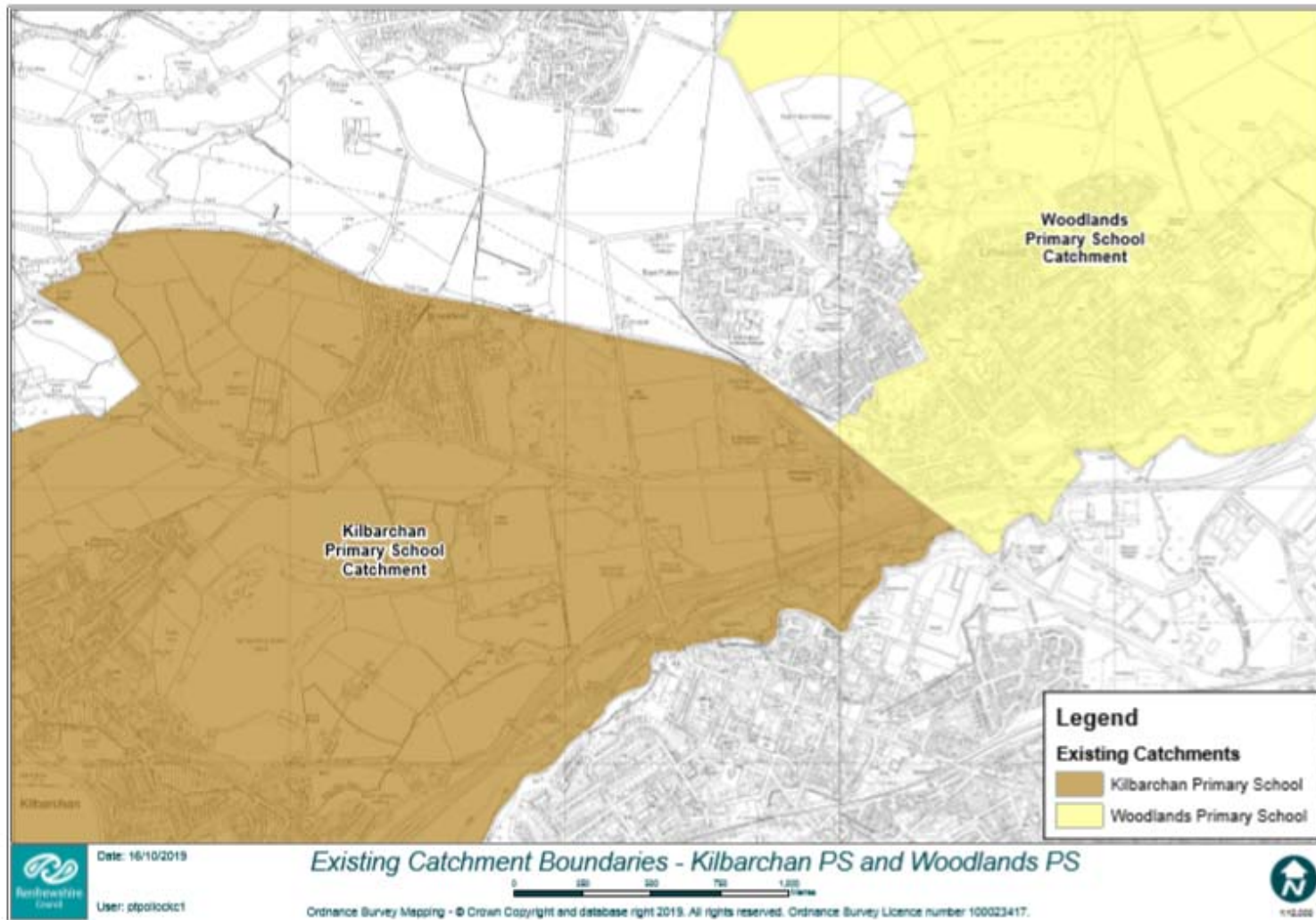
- a) publish the consultation report in both electronic and printed form;
- b) make the report available for inspection at all reasonable times and without charge:
 - (i) at its head office and on its website; and
 - (ii) at any affected school or at a public library or some other suitable place within the vicinity of the school.
- c) provide without charge the information contained in the consultation report:
 - (i) to such persons as may reasonably require that information in another form; and
 - (ii) in such other form as may reasonably be requested by such persons.
- d) inform any person who during the consultation period made written representations on the relevant proposal of the publication of the consultation report; and
- e) advertise the publication of the consultation report by such means as it considers appropriate.

8.6 The time line and summary of the consultation process in respect of this proposal is set out below:

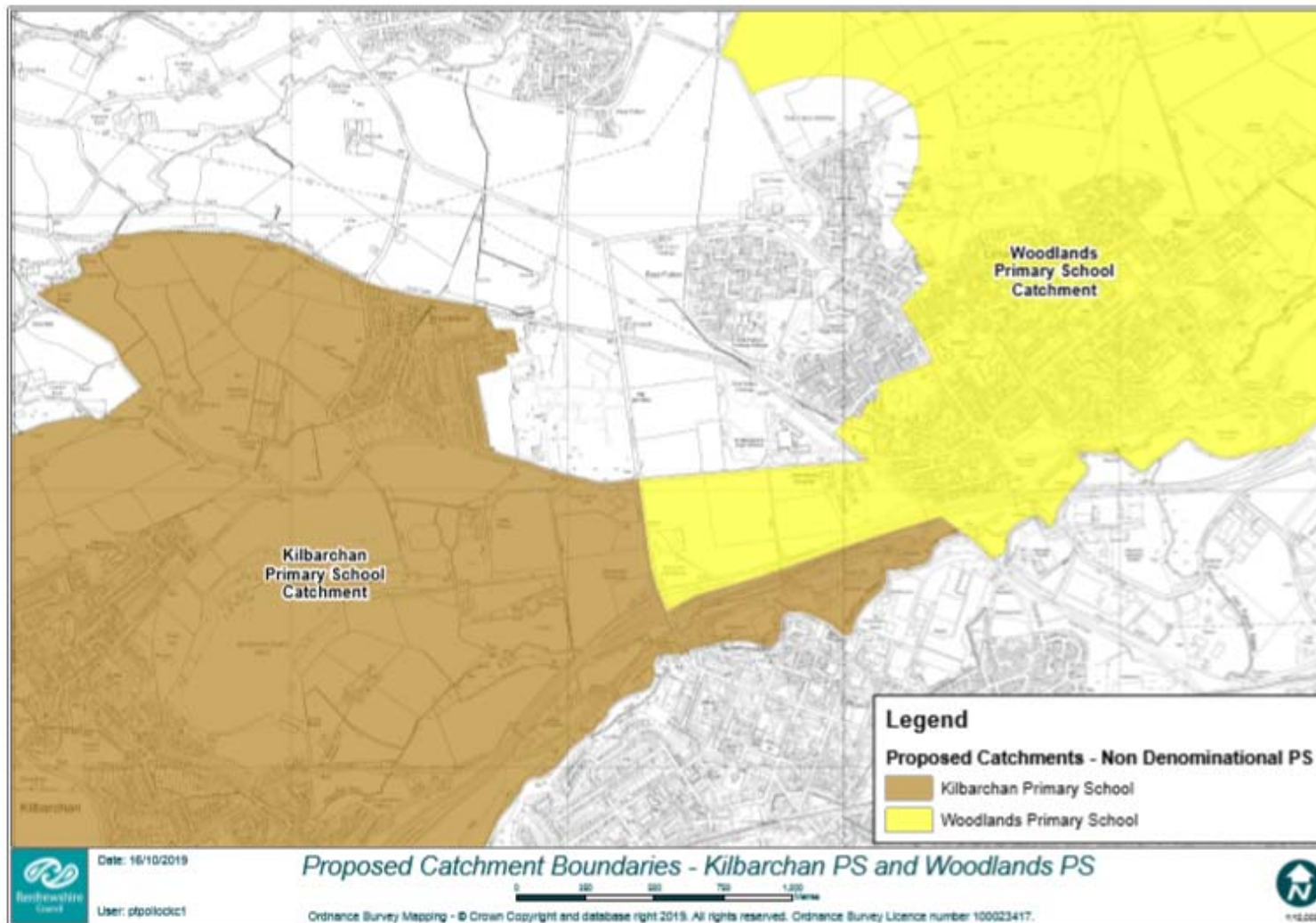
Activity	Date
Approval for consultation sought from Education and Children's Services policy board	31 October 2019

<p>Consultation document to be issued outlining the proposal to:</p> <ul style="list-style-type: none"> the parent council or combined parent council of any affected schools; the parents of the pupils at any affected school; the parents of any children who would be likely to become pupils at the affected schools expected by the education authority to attend any affected school within 2 years of the date of publication of the proposal paper; the pupils at any affected school (in so far as the education authority considers them to be of a suitable age and maturity); the staff (teaching and other) at any affected school; any trade union which appears to the education authority to be representative of the staff (teaching and other) at any affected school; the community council (if any); the community planning partnership for the area of the local authority in which any affected school is situated and any other community planning partnership that the education authority considers relevant; any other education authority that the education authority considers relevant; and any other community groups using any of the affected schools. 	18 November 2019
Advert to advise of public consultation meeting and the commencement of the formal consultation period issued via local press.	18 November 2019
<ul style="list-style-type: none"> Public consultation meeting, covering all proposals, held to consult with affected communities in Woodlands Primary School at 6.30pm; and Questionnaire to go live on the Council website. 	26 November 2019
Public consultation period ends 6 weeks after the date of the public meeting. The total period excludes any school holidays or in-service days.	21 January 2020
Report to Education Scotland on outcome of consultation.	4 February 2020
Response from Education Scotland on outcome of consultation.	25 February 2020
Consultation response report (including Education Scotland response) presented to Education and Children's Services policy board meeting stating consultation outcomes and making final recommendation.	August 2020
Copy of proposal paper and consultation response report sent to Scottish Ministers within 6 days of education and children's services policy board approval.	August 2020

Existing Catchment – Kilbarchan and Woodlands Primary Schools



Proposed Catchment – Kilbarchan and Woodlands Primary Schools



Catchment Review: Streets Affected – Kilbarchan Primary School with Woodlands Primary School

Addresses at September 2019

Galbraith Drive
Cowan Avenue
Mill of Cart Way

Note: This development is still under construction and more addresses may be added to this list, which fall within the boundary of this development.

Catchment Review: Kilbarchan Primary School with Woodlands Primary School

Numbers currently attending Renfrewshire schools from development:

This development is under construction and no pupils currently reside within the development.

THIS IS A CONSULTATION DOCUMENT

Proposal relating to:

The revision of catchment areas affecting St Margaret's and Our Lady of Peace Primary Schools

1. Introduction

- 1.1 The Schools (Consultation) (Scotland) Act 2010 ("the 2010 Act") makes provision for the consultation process that is to apply re: various proposals made by Councils for schools. The principal purpose of the 2010 Act is to provide strong, accountable statutory consultation practices and procedures that local authorities must apply to their handling of all proposals for school closures and other major changes to schools. These consultation processes are expected to be robust, open, transparent and fair, and seen to be so. They are also expected to be consistent across Scotland. The 2010 Act applies to a wide range of changes to the school estate, referred to as "relevant proposals".
- 1.2 This document seeks approval to consult on the proposal to revise catchment arrangements affecting St Margaret's and Our Lady of Peace Primary Schools. In accordance with Section 2 and Schedule 1, Para. 4 of the 2010 Act, a proposal to vary any admission arrangements for a school, including a proposal to alter or establish the catchment area of a school, is a relevant proposal for the purposes of the 2010 Act. This proposal is therefore a relevant proposal for the purposes of the 2010 Act.
- 1.3 This is the proposal paper, produced by the Council in accordance with the terms of Sections 1 and 4 of the 2010 Act. This proposal paper must:
- a) set out the details of the relevant proposal;
 - b) propose a date for implementation of the proposal;
 - c) contain the educational benefits statement in respect of the proposal;
 - d) refer to such evidence or other information in support of (or otherwise relevant in relation to) the proposal as the Council considers appropriate; and
 - e) give a summary of the process provided for in the 2010 Act.

The Council must do the following:

- a) publish this proposal paper in electronic and printed form;
- b) make the paper, and (so far as practicable) a copy of any separate documentation that it refers to, available for inspection at all reasonable times and without charge:
 - (i) at its head office and on its website; and
 - (ii) at any affected school or at a public library or some other suitable place within the vicinity of the school.

- c) provide without charge the information contained in this proposal paper:
 - (i) to such persons as may reasonably require that information in another form; and
 - (ii) in such other form as may reasonably be requested by such persons.
- d) advertise the publication of the proposal paper by such means as it considers appropriate.

2. Correction of the proposal paper

- 2.1 Where, during the consultation period, the Council has been notified of an alleged omission of relevant information from a proposal paper or an alleged inaccuracy in a proposal paper the Council must proceed as follows:
 - a) determine if relevant information has (in its opinion) been omitted and whether there is (in fact) an inaccuracy;
 - b) inform the notifier of its determination under paragraph (a), and the reasons for that determination;
 - c) inform the notifier as to the action (if any) it is taking and of the reasons why it is, or is not, taking such action; and
 - d) invite the notifier to make representations to the Council if the notifier disagrees with the Council's determination under paragraph (a) or its decision as to whether to take action.
- 2.2 Where the notifier makes further representation under paragraph 2(d) above, the Council may make a fresh determination as to whether relevant information has been omitted or there is (in fact) an inaccuracy and the Council may make a fresh decision as to whether to take action. The Council must inform the notifier if it makes a fresh determination referred to above, or if it makes a fresh decision as to whether to take action.
- 2.3 Where, having been notified by another person as described above, the Council determines that:
 - a) relevant information has been omitted from the proposal paper, or
 - b) there is (in fact) an inaccuracy in the proposal paper; and
 - c) where the Council discovers, during the consultation period that relevant information has been omitted from a proposal paper or discovers an inaccuracy in a proposal paper, the Council must proceed as follows:
- 2.4 Where the information that has been omitted or the inaccuracy relates to a material consideration relevant to the Council's decision as to implementation of the proposal, it must:
 - (i) publish a corrected proposal paper,

- (ii) give revised notice in accordance with the 2010 Act and
 - (iii) send a copy of the corrected paper to Education Scotland, or
 - (iv) issue a notice to the relevant consultees and Education Scotland providing the omitted information or, as the case may be, correcting the inaccuracy, and, if the Council considers it appropriate, extending the consultation period by such period as is reasonable by reference to the significance of the information provided or, as the case may be, the nature of the correction.
- 2.5 Where the information that has been omitted or the inaccuracy does not relate to a material consideration, the Council may, but is not obliged to, take steps (i)-(iii) or (iv) described above, and may also take no further action, except to report the inaccuracy/omission as required by the 2010 Act in the consultation report, which is referred to in more detail below.
- 2.6 Where, after the end of the consultation period, the Council issues a notice to the relevant consultees and Education Scotland providing the omitted information or correcting the inaccuracy, that notice may, instead of extending the consultation period, specify such further period during which representations may be made on the proposal as is reasonable by reference to the significance of the information provided or, as the case may be, the nature of the correction. Any such further period is to be treated as part of the consultation period for the purposes of the 2010 Act.
-

3. Consultation arrangements

- 3.1 As confirmed above, the present proposal is a relevant proposal for the purposes of the 2010 Act, and therefore the Council will adhere to the consultation process in the 2010 Act.
- 3.2 This consultation document provides background information to the catchment review. It details the proposal and indicates a timeframe for implementation should the proposal be approved.
- 3.3 This consultation document also includes the Council's Educational Benefits Statement.
-

4. Rationale for catchment review

- 4.1 Assessment of housing development at the Merchiston Hospital, Houston Station and Johnstone Hospital sites has identified a requirement to consider a catchment review which would affect St Margaret's and Our Lady of Peace Primary Schools.
- 4.2 These new housing development could generate approximately 18 additional primary school pupils over a 6 year period. These additional pupils could put excessive pressure on the accommodation at St Margaret's Primary School.

- 4.3 The undernoted table demonstrates that the increased number of pupils from these new housing developments could be accommodated more comfortably within Our Lady of Peace Primary School.

St Margaret's Primary School	2019/20	2020/21	2021/22	2022/23	2023/24	2024/25
Projection excluding housing developments	227	229	223	221	233	233
Occupancy excluding housing developments	83%	84%	82%	81%	86%	86%
Projection including all developments	230	236	234	236	250	251
Percentage occupancy level including all developments	85%	87%	86%	87%	92%	92%
Pupils rezoned to Our Lady of Peace Primary School (18)	3	4	4	4	2	1
Our Lady of Peace Primary School	2019/20	2020/21	2021/22	2022/23	2023/24	2024/25
Projection excluding housing developments	237	226	226	229	224	224
Occupancy excluding housing developments	67%	64%	64%	65%	64%	64%
Projection including all developments	240	233	237	244	241	242
Percentage occupancy level including all developments	68%	66%	67%	69%	68%	69%
Pupils rezoned from St Margaret's Primary School (18)	3	4	4	4	2	1

- 4.4 Denominational pupils living at addresses within housing developments at “Merchiston Hospital” and “Houston Station” are currently entitled to free school transport if they are currently attending St Margaret’s Primary School. If this proposal is approved all pupils living at these addresses would be entitled to free school transport to Our Lady of Peace Primary School.
- 4.5 However, if this proposal is approved all denominational pupils living at addresses within the “Johnstone Hospital” site would be within 1 mile’s walking distance of Our Lady of Peace Primary School and therefore would not be entitled to free school transport.
- 4.6 It is recommended that the catchment boundary between these schools be amended to remove this housing development from St Margaret’s Primary School’s catchment area and to incorporate it into Our Lady of Peace Primary School’s catchment area.

5. Educational benefits statement

- 5.1 Under the 2010 Act the Council must prepare an educational benefits statement (EBS) in accordance with Sections 1 and 3 of the 2010 Act.

5.2 The EBS must include the following:

- a) the Council's assessment of the likely educational effects of a relevant proposal (if implemented) on:
 - (i) the pupils of any affected school;
 - (ii) any other users of the school's facilities;
 - (iii) any children who would (in the future but for implementation) be likely to become pupils of the school; or
 - (iv) the pupils of any other schools in the Council's area,
- b) the Council's assessment of any other likely effects of the proposal (if implemented),
- c) an explanation of how the Council intends to minimise or avoid any adverse educational effects that may arise from the proposal (if implemented),
- d) a description of the educational benefits which the Council believes will result from implementation of the proposal (with reference to the persons whom it believes will derive them), as well as the Council's reasons for coming to those beliefs.

5.3 The following paragraphs detail the Council's Educational Benefits Statement:

- 5.3.1 All pupils affected by this catchment review would be entitled to continue attending the school they are currently in.
- 5.3.2 Children's Services would provide transition support to any pupils opting to change school as a result of this proposal.
- 5.3.3 If a pupil is entitled to free school transport, in line with the Council's transport policy, then this entitlement would also continue.
- 5.3.4 Siblings of those pupils attending Kilbarchan Primary School would be entitled to attend this school with their sibling as long as their sibling is registered in the school when they enrol.
- 5.3.5 Free school transport for new primary 1 pupils would only be provided in instances where the pupil enrolls in the school at a time when their sibling still attends the school and where that sibling is entitled to free school transport.
- 5.3.6 Renfrewshire Council's quality improvement framework supports all schools to improve and develop. St Margaret's and Our Lady of Peace Primary Schools produce annual standards and quality reports which demonstrate progress towards their agreed educational objectives through the efficient and prudent use of resources. Both schools have well developed self-evaluation and school improvement planning procedures which are informed by the whole school community and reviewed through the Council's quality improvement visits which are aligned to the quality indicators identified in How Good is Our School 4 (HGIOS4).

- 5.3.7 This catchment review is necessary as the increased number of pupils would put excessive pressure on the accommodation at St Margaret's Primary School.
- 5.3.8 The increase in numbers could result in the pupil roll increasing beyond St Margaret's Primary School's operational capacity, impacting on spaces for teacher directed learning; breakout areas for independent or small group learning; and areas to facilitate the range of learning experiences necessary for the development of meta skills.
- 5.3.9 The capacity of Our Lady of Peace Primary School is 352 and the maximum projected pupil roll, including those pupils potentially generated from these new housing developments is 244. This means that the accommodation at Our Lady of Peace Primary School can support the full range of curricular and extra-curricular activity and this increase in pupil numbers would not adversely affect the delivery of the curriculum. This proposal will assist with effective class organisation models to support learning and teaching.
- 5.3.10 The accommodation at Our Lady of Peace Primary School can support the full range of curricular and extra-curricular activity and it would not be adversely affected by this increase in pupil numbers. However, St Margaret's Primary School's playground and social gathering areas, which provide for different kinds of play and social interaction, could be adversely affected in terms of space to play; access to outdoor P.E.; participation in outdoor learning opportunities relating to the natural environment and environmental issues; and extra-curricular physical activity.
- 5.3.11 The accommodation at Our Lady of Peace Primary School provides ample support spaces to support the wellbeing of all pupils however, St Margaret's Primary School's capacity to provide quiet spaces to support the emotional wellbeing of pupils with additional support needs could also be compromised.
- 5.3.12 The additional number of pupils at St Margaret's Primary School would also impact on dining, creating pressure on the existing facilities. The accommodation at Our Lady of Peace Primary School provides ample dining facilities for all pupils.
- 5.4 Our assessment of any other likely effects of the proposal (if implemented).

As is the case in any consultation of this scale, there may be those who perceive their situation to be affected positively, those who perceive the changes as negatively affecting their situation, and those for whom no perceived change is anticipated.

For example, a child who currently attends St Margaret's Primary School who has siblings who may wish to attend this school in the future may have concerns; if the proposal goes ahead and they are deemed to now be living in the Our Lady of Peace Primary School catchment area. These families would neither be advantaged nor disadvantaged as provision is being made for them to attend, so long as siblings are in attendance at the time of enrolment.

- 5.5 How we would intend to minimise or avoid any adverse effects that may arise from the proposal (if implemented).

A right for siblings of those affected by the change has been included. That is, a child who attends St Margaret's primary school currently and has a sibling who wishes to attend in the future are being afforded provision to do so; should the proposal be agreed.

- 5.6 The benefits, which we believe, would result from implementation of this proposal.

In addition to the benefits noted in 5.3.1 – 5.3.8 above, Children's Services believe that reviewing this catchment area would enable the Council to plan more effectively and robustly as the challenge of rising rolls within the authority continues to emerge.

6. Impact on schools and their communities

- 6.1 Catchment review forms part of the Council's School Estate Management Planning process and equality impact assessment is central to this approach.
- 6.2 The recommendations contained within this report will be assessed in relation to their potential impact on equalities and human rights as part of the consultative process.
- 6.3 There is no impact on community council boundaries.
- 6.4 Both schools will have capacity to serve communities.

7. Involvement of Education Scotland

- 7.1 A copy of this proposal has been sent to Education Scotland.
- 7.2 At the end of the formal consultation period Children's Services will send Education Scotland the following:
- a) a copy of all relevant written representations that are received from any person during the consultation period;
 - b) a summary of any oral representations made by any person during the public meeting; and
 - c) a copy of any other relevant documentation, as available and so far, as practicable.
- 7.3 Education Scotland will provide the Council with a report on the educational aspects of this proposal. This report will be submitted to the Council no later than 3 weeks after Children's Services have sent them all of the representations and documents noted above, or such longer period as the Council may agree with Education Scotland.

- 7.4 In preparing their report, Education Scotland may visit establishments affected by the proposal and may make reasonable enquiries of such persons (both in the in the establishments and outwith) as they consider appropriate.
-

8. Consultation report

- 8.1 After receiving the report from Education Scotland, Children's Services will review the proposal having regard (in particular) to the following:
- a) written representations received by the Council from any person during the consultation period;
 - b) oral representations received by the Council from any person at the public meeting; and
 - c) report provided by Education Scotland.
- 8.2 Thereafter the service will prepare a consultation report for consideration by the education and children's services policy board
- 8.3 The consultation report will contain the following:
- a) a record of the total number of any written representations made to the Council (by any person) on the proposal during the consultation period;
 - b) a summary of:
 - (i) those written representations; and
 - (ii) any oral representations made to it (by any person) at the public meeting.
 - c) a statement of the Council's response to:
 - (i) those written and oral representations; and
 - (ii) Education Scotland's report.
 - d) a copy of that report
 - e) a statement explaining how the Council complied with its obligation to review the relevant proposal as described above.
- 8.4 The consultation report will also include the following:
- a) details of any omission/inaccuracy in the proposal paper, or (as the case may be) any alleged omission/inaccuracy, (including a statement of the Council's opinion on it);
 - b) a statement of the action taken in respect of the omission or inaccuracy, or (as the case may be) the alleged omission/inaccuracy, or, if no action has been taken, of that fact (and why); and

- c) any representations made to the Council where the person who made the notification re: omission/inaccuracy disagreed with the Council's determination as to whether there had been an omission/inaccuracy, or its decision as to whether to take action.

8.5 The Council must:

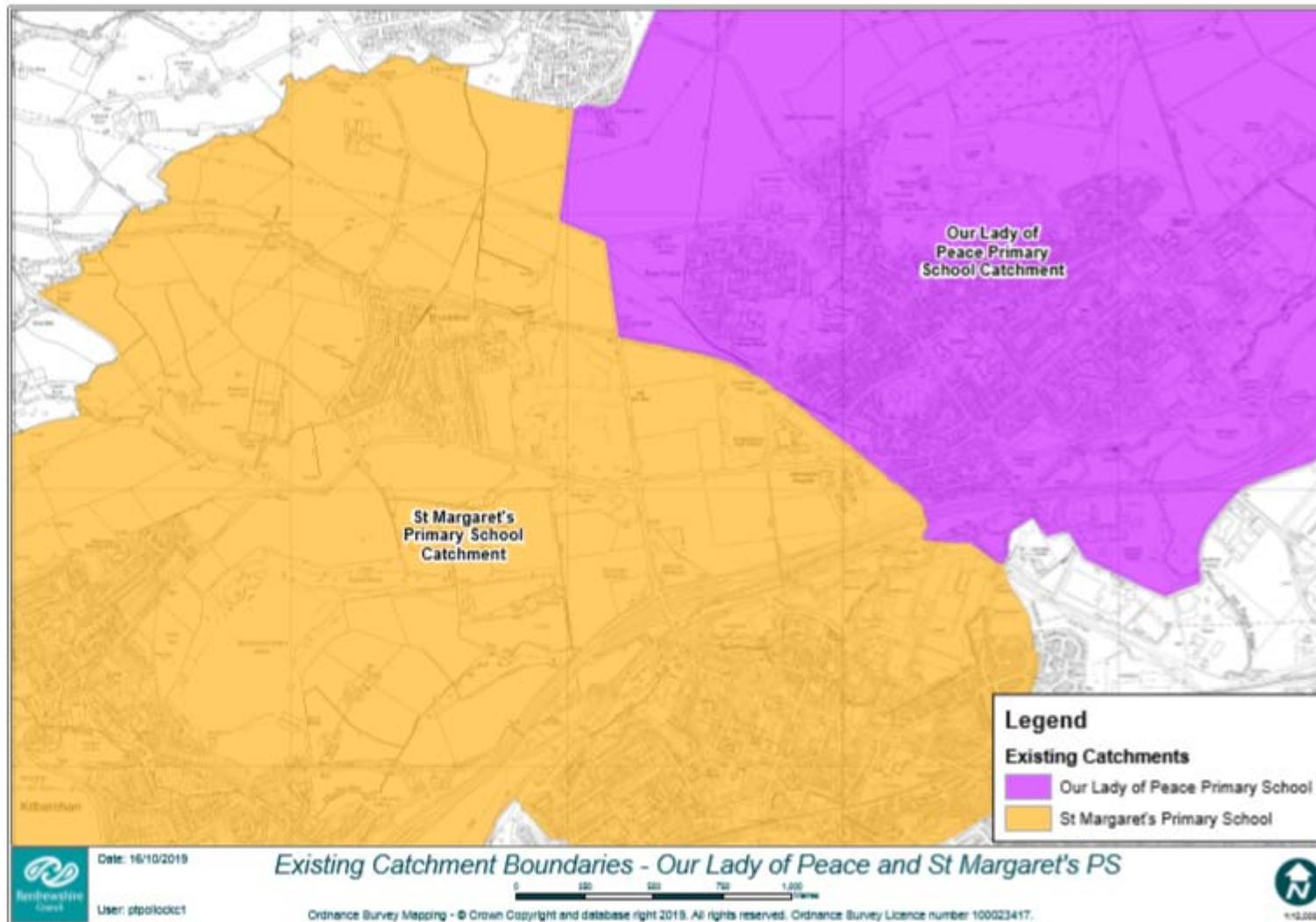
- a) publish the consultation report in both electronic and printed form;
- b) make the report available for inspection at all reasonable times and without charge:
- (i) at its head office and on its website: and
 - (ii) at any affected school or at a public library or some other suitable place within the vicinity of the school.
- c) provide without charge the information contained in the consultation report:
- (i) to such persons as may reasonably require that information in another form; and
 - (ii) in such other form as may reasonably be requested by such persons.
- d) inform any person who during the consultation period made written representations on the relevant proposal of the publication of the consultation report; and
- e) advertise the publication of the consultation report by such means as it considers appropriate.

8.6 The time line and summary of the consultation process in respect of this proposal is set out below:

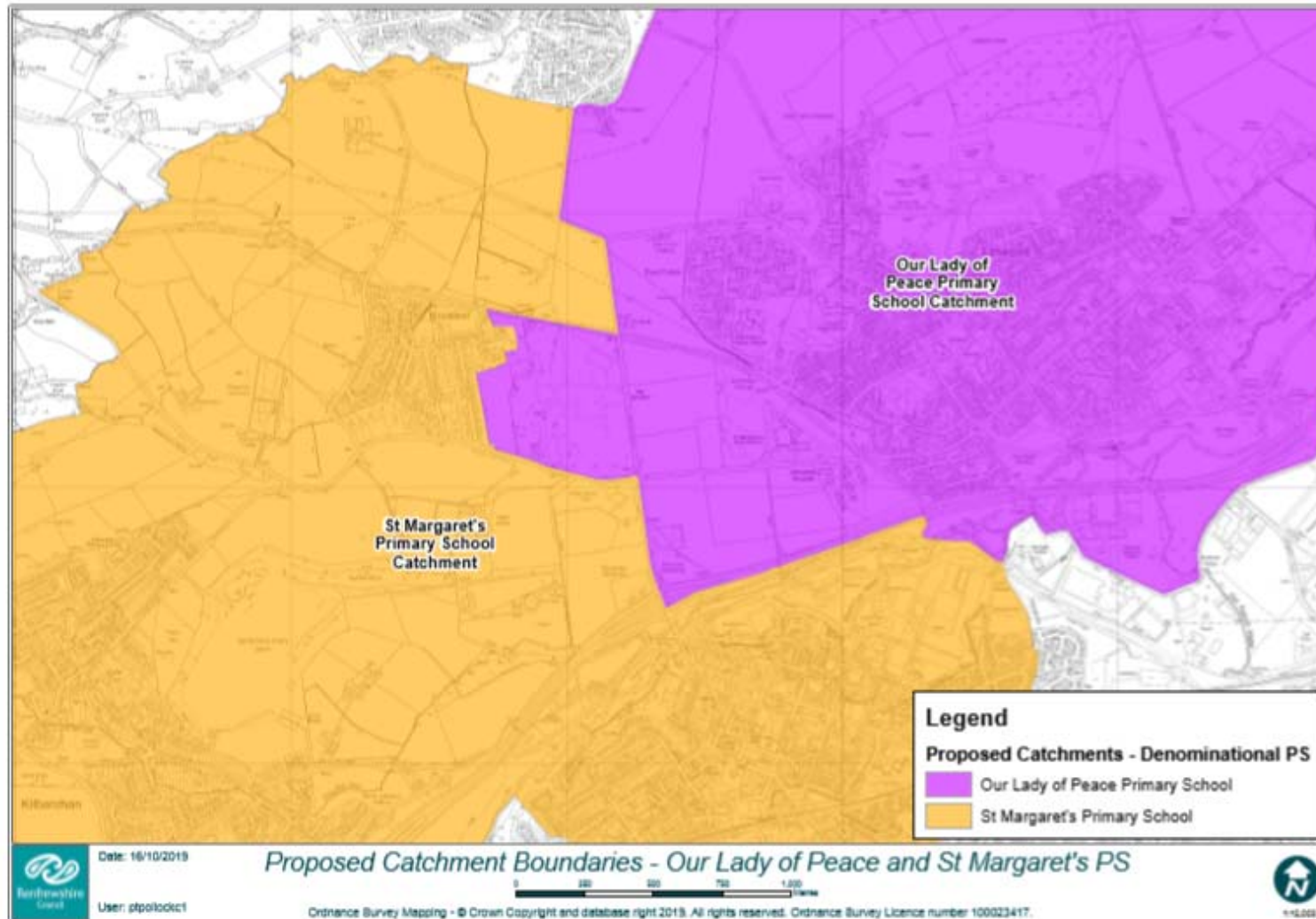
Activity	Date
Approval for consultation sought from Education and Children's Services policy board	31 October 2019
Consultation document to be issued outlining the proposal to: <ul style="list-style-type: none"> • the parent council or combined parent council of any affected schools; • the parents of the pupils at any affected school; • the parents of any children who would be likely to become pupils at the affected schools expected by the education authority to attend any affected school within 2 years of the date of publication of the proposal paper; • the pupils at any affected school (in so far as the education authority considers them to be of a suitable age and maturity); • the staff (teaching and other) at any affected school; • any trade union which appears to the education authority to be representative of the staff (teaching and other) at any affected school; • the community council (if any); 	18 November 2019

<ul style="list-style-type: none"> the community planning partnership for the area of the local authority in which any affected school is situated and any other community planning partnership that the education authority considers relevant; any other education authority that the education authority considers relevant; and any other community groups using any of the affected schools. 	
Advert to advise of public consultation meeting and the commencement of the formal consultation period issued via local press.	18 November 2019
<ul style="list-style-type: none"> Public consultation meeting, covering all proposals, held to consult with affected communities in Woodlands Primary School at 6.30pm; and Questionnaire to go live on the Council website. 	26 November 2019
Public consultation period ends 6 weeks after the date of the public meeting. The total period excludes any school holidays or in-service days.	21 January 2020
Report to Education Scotland on outcome of consultation.	4 February 2020
Response from Education Scotland on outcome of consultation.	25 February 2020
Consultation response report (including Education Scotland response) presented to Education and Children's Services policy board meeting stating consultation outcomes and making final recommendation.	August 2020
Copy of proposal paper and consultation response report sent to Scottish Ministers within 6 days of education and children's services policy board approval.	August 2020

Existing Catchment – St Margaret's and Our Lady of Peace Primary Schools



Proposed Catchment – St Margaret's and Our Lady of Peace Primary Schools



**Catchment Review: Streets Affected – St Margaret’s Primary School with Our Lady of Peace Primary Schools
Addresses at September 2019**

Barochan Lane
Fairlie Road
Glendale Wynd
Gowanlea Place
Merchiston Drive
Merchiston Oval
Nethermains Avenue
Newfield Way
Whitebeam Grove
Whitehouse Gardens
Windyhill Crescent
Galbraith Drive
Cowan Avenue
Mill of Cart Way

Note: This development is still under construction and more addresses may be added to this list, which fall within the boundary of the developments.

**Catchment Review: St Margaret's Primary School with Our Lady of Peace
Primary Schools**

Numbers currently attending Renfrewshire schools from development:

School	Number of pupils affected
Bridge of Weir Primary School	1
Cochrane Castle Primary School	2
East Fulton Primary School	4
Kilbarchan Primary School	2
St Fillan's Primary School	3
West Primary School	2
Williamsburgh Primary School	2
Total pupils (September 2019)	16

THIS IS A CONSULTATION DOCUMENT

Proposal relating to:

The revision of catchment areas affecting Johnstone and Linwood High Schools

1. Introduction

- 1.1 The Schools (Consultation) (Scotland) Act 2010 (“the 2010 Act”) makes provision for the consultation process that is to apply re: various proposals made by Councils for schools. The principal purpose of the 2010 Act is to provide strong, accountable statutory consultation practices and procedures that local authorities must apply to their handling of all proposals for school closures and other major changes to schools. These consultation processes are expected to be robust, open, transparent and fair, and seen to be so. They are also expected to be consistent across Scotland. The 2010 Act applies to a wide range of changes to the school estate, referred to as “relevant proposals”.
- 1.2 This document seeks approval to consult on the proposal to revise catchment arrangements affecting Johnstone and Linwood High Schools. In accordance with Section 2 and Schedule 1, Para. 4 of the 2010 Act, a proposal to vary any admission arrangements for a school, including a proposal to alter or establish the catchment area of a school, is a relevant proposal for the purposes of the 2010 Act. This proposal is therefore a relevant proposal for the purposes of the 2010 Act.
- 1.3 This is the proposal paper, produced by the Council in accordance with the terms of Sections 1 and 4 of the 2010 Act. This proposal paper must:
 - a) set out the details of the relevant proposal;
 - b) propose a date for implementation of the proposal;
 - c) contain the educational benefits statement in respect of the proposal;
 - d) refer to such evidence or other information in support of (or otherwise relevant in relation to) the proposal as the Council considers appropriate; and
 - e) give a summary of the process provided for in the 2010 Act.

The Council must do the following:

- a) publish this proposal paper in electronic and printed form;
- b) make the paper, and (so far as practicable) a copy of any separate documentation that it refers to, available for inspection at all reasonable times and without charge:
 - (i) at its head office and on its website; and

- (ii) at any affected school or at a public library or some other suitable place within the vicinity of the school.
 - c) provide without charge the information contained in this proposal paper:
 - (i) to such persons as may reasonably require that information in another form; and
 - (ii) in such other form as may reasonably be requested by such persons.
 - d) advertise the publication of the proposal paper by such means as it considers appropriate.
-

2. Correction of the proposal paper

- 2.1 Where, during the consultation period, the Council has been notified of an alleged omission of relevant information from a proposal paper or an alleged inaccuracy in a proposal paper the Council must proceed as follows:
- a) determine if relevant information has (in its opinion) been omitted and whether there is (in fact) an inaccuracy;
 - b) inform the notifier of its determination under paragraph (a), and the reasons for that determination;
 - c) inform the notifier as to the action (if any) it is taking and of the reasons why it is, or is not, taking such action; and
 - d) invite the notifier to make representations to the Council if the notifier disagrees with the Council's determination under paragraph (a) or its decision as to whether to take action.
- 2.2 Where the notifier makes further representation under paragraph 2(d) above, the Council may make a fresh determination as to whether relevant information has been omitted or there is (in fact) an inaccuracy and the Council may make a fresh decision as to whether to take action. The Council must inform the notifier if it makes a fresh determination referred to above, or if it makes a fresh decision as to whether to take action.
- 2.3 Where, having been notified by another person as described above, the Council determines that:
- a) relevant information has been omitted from the proposal paper, or
 - b) there is (in fact) an inaccuracy in the proposal paper; and
 - c) where the Council discovers, during the consultation period that relevant information has been omitted from a proposal paper or discovers an inaccuracy in a proposal paper, the Council must proceed as follows:

- 2.4 Where the information that has been omitted or the inaccuracy relates to a material consideration relevant to the Council's decision as to implementation of the proposal, it must:
- (i) publish a corrected proposal paper,
 - (ii) give revised notice in accordance with the 2010 Act and
 - (iii) send a copy of the corrected paper to Education Scotland, or
 - (iv) issue a notice to the relevant consultees and Education Scotland providing the omitted information or, as the case may be, correcting the inaccuracy, and, if the Council considers it appropriate, extending the consultation period by such period as is reasonable by reference to the significance of the information provided or, as the case may be, the nature of the correction.
- 2.5 Where the information that has been omitted or the inaccuracy does not relate to a material consideration, the Council may, but is not obliged to, take steps (i)-(iii) or (iv) described above, and may also take no further action, except to report the inaccuracy/omission as required by the 2010 Act in the consultation report, which is referred to in more detail below.
- 2.6 Where, after the end of the consultation period, the Council issues a notice to the relevant consultees and Education Scotland providing the omitted information or correcting the inaccuracy, that notice may, instead of extending the consultation period, specify such further period during which representations may be made on the proposal as is reasonable by reference to the significance of the information provided or, as the case may be, the nature of the correction. Any such further period is to be treated as part of the consultation period for the purposes of the 2010 Act.
-

3. Consultation arrangements

- 3.1 As confirmed above, the present proposal is a relevant proposal for the purposes of the 2010 Act, and therefore the Council will adhere to the consultation process in the 2010 Act.
- 3.2 This consultation document provides background information to the catchment review. It details the proposal and indicates a timeframe for implementation should the proposal be approved.
- 3.3 This consultation document also includes the Council's Educational Benefits Statement.
-

4. Rationale for catchment review

- 5.3. Assessment of new housing development at the Merchiston Hospital, Houston Station and Johnstone Hospital sites has identified a requirement to consider a catchment review which would affect Johnstone and Linwood High Schools.

- 5.4. The new housing developments could generate approximately 48 additional secondary school pupils over a 6 year period. The undernoted table demonstrates that while there is no excessive pressure on accommodation at Johnstone High School these additional pupils could be accommodated comfortably at Linwood High School which is geographically closer.

Johnstone High School	2019/20	2020/21	2021/22	2022/23	2023/24	2024/25
Projection excluding housing developments	994	1019	1045	1102	1105	1142
Occupancy excluding housing developments	72%	74%	76%	80%	80%	83%
Projection including all developments	1002	1037	1075	1142	1150	1190
Percentage occupancy level including all developments	73%	75%	78%	83%	83%	86%
Pupils rezoned to Linwood High School (48)	8	10	12	10	5	3
Linwood High School	2019/20	2020/21	2021/22	2022/23	2023/24	2024/25
Projection excluding housing developments	408	399	401	413	416	426
Occupancy excluding housing developments	71%	69%	70%	72%	72%	74%
Projection including all developments	416	417	431	453	461	474
Percentage occupancy level including all developments	72%	72%	75%	79%	80%	82%
Pupils rezoned from Johnstone High School (48)	8	10	12	10	5	3

- 5.5. It is therefore recommended that the catchment boundary between these schools be amended to remove these housing developments from Johnstone High School's catchment area and to incorporate them into Linwood High School's catchment area.

5. Educational benefits statement

- 5.1 Under the 2010 Act the Council must prepare an educational benefits statement (EBS) in accordance with Sections 1 and 3 of the 2010 Act.

- 5.2 The EBS must include the following:

- a) the Council's assessment of the likely educational effects of a relevant proposal (if implemented) on:
 - (i) the pupils of any affected school;
 - (ii) any other users of the school's facilities;
 - (iii) any children who would (in the future but for implementation) be likely to become pupils of the school; or

- (iv) the pupils of any other schools in the Council's area,
- b) the Council's assessment of any other likely effects of the proposal (if implemented),
- c) an explanation of how the Council intends to minimise or avoid any adverse educational effects that may arise from the proposal (if implemented),
- d) a description of the educational benefits which the Council believes will result from implementation of the proposal (with reference to the persons whom it believes will derive them), as well as the Council's reasons for coming to those beliefs.

5.3 The following paragraphs detail the Council's Educational Benefits Statement:

- 5.3.1 All pupils affected by this catchment review would be entitled to continue attending the school they are currently in.
- 5.3.2 Children's Services would provide transition support to any pupils opting to change school as a result of this proposal.
- 5.3.3 If a pupil is entitled to free school transport, in line with the Council's transport policy, then this entitlement would also continue.
- 5.3.4 Free school transport for new S 1 pupils would only be provided in instances where the pupil enrolls in the school at a time when their sibling still attends the school and where that sibling is entitled to free school transport.
- 5.3.5 Renfrewshire Council's quality improvement framework supports all schools to improve and develop. Johnstone High and Linwood High Schools produce annual standards and quality reports which demonstrate progress towards their agreed educational objectives through the efficient and prudent use of resources. Both schools have well developed self-evaluation and school improvement planning procedures which are informed by the whole school community and reviewed through the Council's quality improvement visits which are aligned to the quality indicators identified in How Good is Our School 4 (HGIOS4).
- 5.3.6 This catchment alteration ensures that all pupils attending Kilbarchan Primary School will transfer to Johnstone High School and all pupils attending East Fulton and Woodlands Primary Schools will transfer to Linwood High School. This means that pupils are not separated from their classmates at the point of transition from primary to secondary school.
- 5.3.7 The capacity of Linwood High School is 576 and the maximum projected pupil roll, including those pupils potentially generated from these new housing developments is 474. This means that the accommodation at Linwood High School can support the full range of curricular and extra-curricular activity and this increase in pupil numbers would not adversely affect the delivery of the curriculum. This proposal will assist with effective class organisation models to support learning and teaching.

5.4 Our assessment of any other likely effects of the proposal (if implemented).

As is the case in any consultation of this scale, there may be those who perceive their situation to be affected positively, those who perceive the changes as negatively affecting their situation, and those for whom no perceived change is anticipated.

For example, a child who currently attends Johnstone High School who has siblings who may wish to attend this school in the future may have concerns; if the proposal goes ahead and they are deemed to now be living in the Linwood High School catchment area. These families would neither be advantaged nor disadvantaged as provision is being made for them to attend, so long as siblings are in attendance at the time of transfer.

5.5 How we would intend to minimise or avoid any adverse effects that may arise from the proposal (if implemented).

A right for siblings of those affected by the change has been included. That is, a child who attends Johnstone High School currently and has a sibling who wishes to attend in the future are being afforded provision to do so; should the proposal be agreed.

5.6 The benefits, which we believe, would result from implementation of this proposal.

In addition to the benefits noted above, Children's Services believe that reviewing this catchment area would enable the Council to plan more effectively and robustly as the challenge of rising rolls within the authority continues to emerge.

6. Impact on schools and their communities

6.1 Catchment review forms part of the Council's School Estate Management Planning process and equality impact assessment is central to this approach.

6.2 The recommendations contained within this report will be assessed in relation to their potential impact on equalities and human rights as part of the consultative process.

6.3 There is no impact on community council boundaries.

6.4 Both schools will have capacity to serve communities.

7. Involvement of Education Scotland

7.1 A copy of this proposal has been sent to Education Scotland.

7.2 At the end of the formal consultation period Children's Services will send Education Scotland the following:

- a) a copy of all relevant written representations that are received from any person during the consultation period;
- b) a summary of any oral representations made by any person during the public meeting; and
- c) a copy of any other relevant documentation, as available and so far, as practicable.

7.3 Education Scotland will provide the Council with a report on the educational aspects of this proposal. This report will be submitted to the Council no later than 3 weeks after Children's Services have sent them all of the representations and documents noted above, or such longer period as the Council may agree with Education Scotland.

7.4 In preparing their report, Education Scotland may visit establishments affected by the proposal and may make reasonable enquiries of such persons (both in the in the establishments and outwith) as they consider appropriate.

8. Consultation report

8.1 After receiving the report from Education Scotland, Children's Services will review the proposal having regard (in particular) to the following:

- a) written representations received by the Council from any person during the consultation period;
- b) oral representations received by the Council from any person at the public meeting; and
- c) the report provided by Education Scotland.

8.2 Thereafter the service will prepare a consultation report for consideration by the education and children's services policy board.

8.3 The consultation report will contain the following:

- a) record of the total number of any written representations made to the Council (by any person) on the proposal during the consultation period;
- b) a summary of:
 - (i) those written representations; and
 - (ii) any oral representations made to it (by any person) at the public meeting.
- c) a statement of the Council's response to:
 - (i) those written and oral representations; and
 - (ii) Education Scotland's report.
- d) a copy of that report

- e) a statement explaining how the Council complied with its obligation to review the relevant proposal as described above.

8.4 The consultation report will also include the following:

- a) details of any omission/inaccuracy in the proposal paper, or (as the case may be) any alleged omission/inaccuracy, (including a statement of the Council's opinion on it);
- b) a statement of the action taken in respect of the omission or inaccuracy, or (as the case may be) the alleged omission/inaccuracy, or, if no action has been taken, of that fact (and why); and
- c) any representations made to the Council where the person who made the notification re: omission/inaccuracy disagreed with the Council's determination as to whether there had been an omission/inaccuracy, or its decision as to whether to take action.

8.5 The Council must:

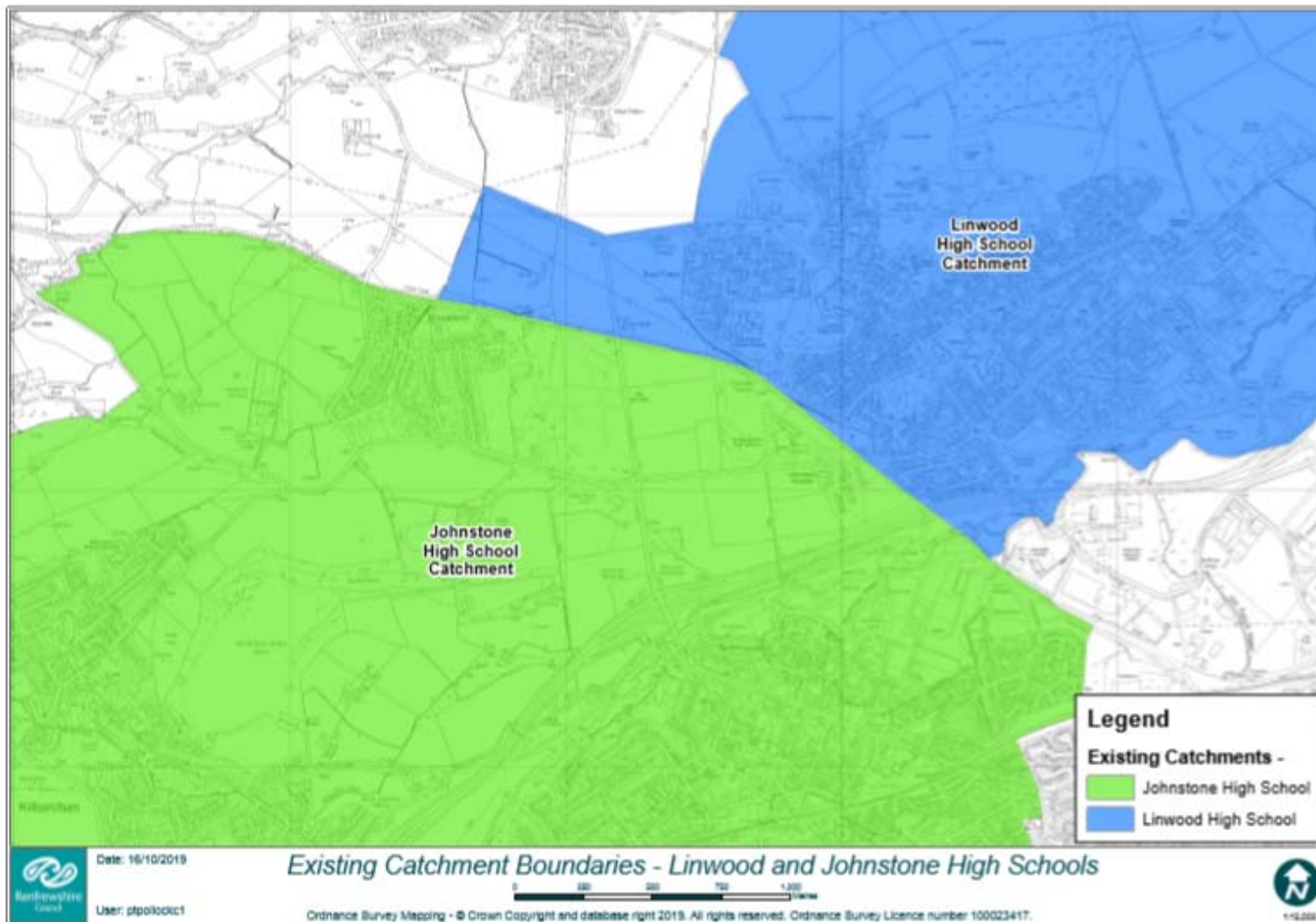
- a) publish the consultation report in both electronic and printed form;
- b) make the report available for inspection at all reasonable times and without charge:
 - (i) at its head office and on its website; and
 - (i) at any affected school or at a public library or some other suitable place within the vicinity of the school.
- c) provide without charge the information contained in the consultation report:
 - (i) to such persons as may reasonably require that information in another form; and
 - (ii) in such other form as may reasonably be requested by such persons.
- d) inform any person who during the consultation period made written representations on the relevant proposal of the publication of the consultation report; and
- e) advertise the publication of the consultation report by such means as it considers appropriate.

8.6 The time line and summary of the consultation process in respect of this proposal is set out below:

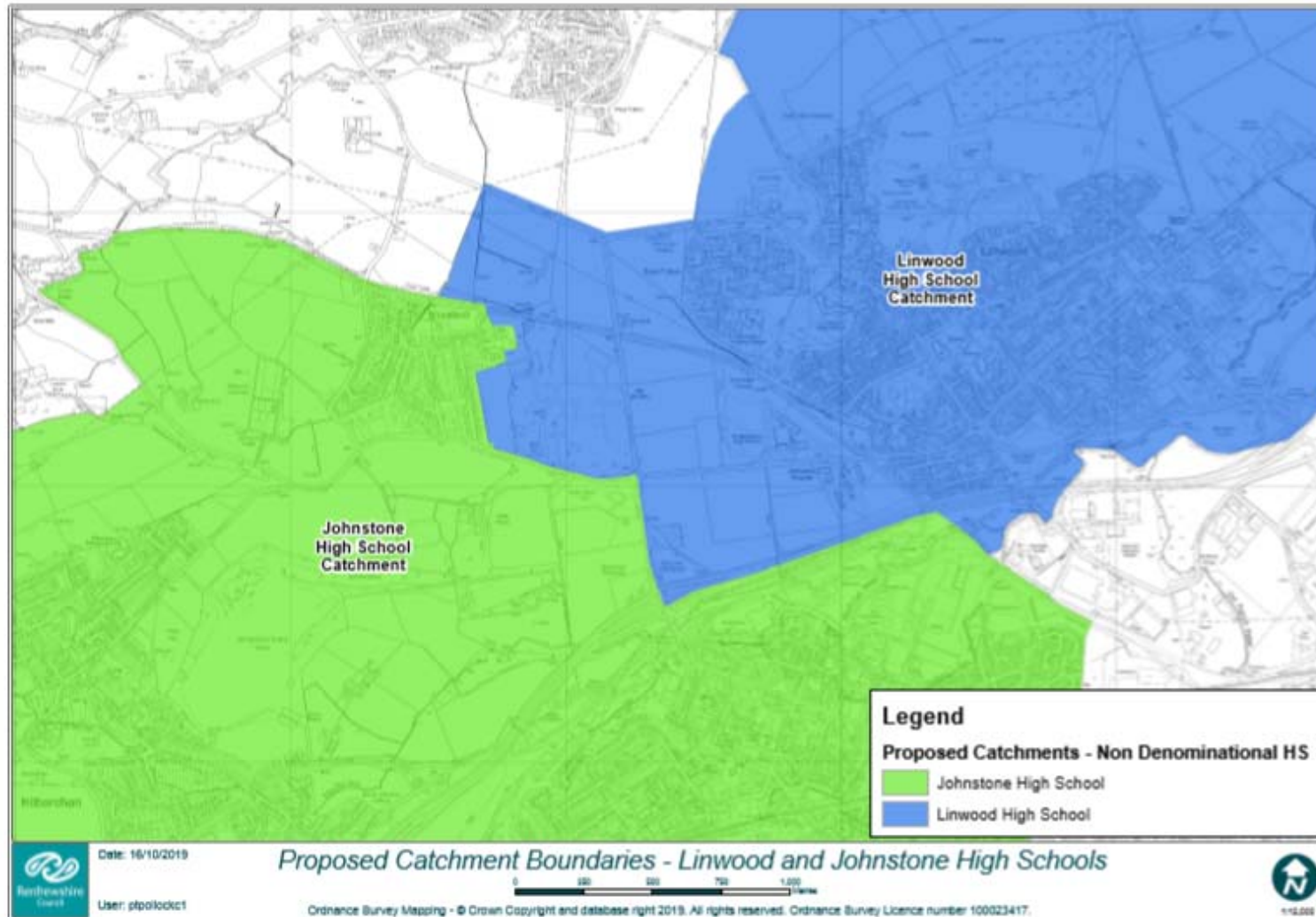
Activity	Date
Approval for consultation sought from Education and Children's Services policy board	31 October 2019

<p>Consultation document to be issued outlining the proposal to:</p> <ul style="list-style-type: none"> the parent council or combined parent council of any affected schools; the parents of the pupils at any affected school; the parents of any children who would be likely to become pupils at the affected schools expected by the education authority to attend any affected school within 2 years of the date of publication of the proposal paper; the pupils at any affected school (in so far as the education authority considers them to be of a suitable age and maturity); the staff (teaching and other) at any affected school; any trade union which appears to the education authority to be representative of the staff (teaching and other) at any affected school; the community council (if any); the community planning partnership for the area of the local authority in which any affected school is situated and any other community planning partnership that the education authority considers relevant; any other education authority that the education authority considers relevant; and any other community groups using any of the affected schools. 	18 November 2019
Advert to advise of public consultation meeting and the commencement of the formal consultation period issued via local press.	18 November 2019
<ul style="list-style-type: none"> Public consultation meeting, covering all proposals, held to consult with affected communities in Woodlands Primary School at 6.30pm; and Questionnaire to go live on the Council website. 	26 November 2019
Public consultation period ends 6 weeks after the date of the public meeting. The total period excludes any school holidays or in-service days.	21 January 2020
Report to Education Scotland on outcome of consultation.	4 February 2020
Response from Education Scotland on outcome of consultation.	25 February 2020
Consultation response report (including Education Scotland response) presented to Education and Children's Services policy board meeting stating consultation outcomes and making final recommendation.	August 2020
Copy of proposal paper and consultation response report sent to Scottish Ministers within 6 days of education and children's services policy board approval.	August 2020

Existing Catchment – Johnstone and Linwood High Schools



Proposed Catchment – Johnstone and Linwood High Schools



Catchment Review: Streets Affected – Johnstone High School with Linwood High School

Addresses at September 2019

Barochan Lane
Fairlie Road
Glendale Wynd
Gowanlea Place
Merchiston Drive
Merchiston Oval
Nethermains Avenue
Newfield Way
Whitebeam Grove
Whitehouse Gardens
Windyhill Crescent
Galbraith Drive
Cowan Avenue
Mill of Cart Way

Note: The developments are still under construction and more addresses may be added to this list, which fall within the boundary of the developments.

Catchment Review: Johnstone High School with Linwood High School

Numbers currently attending Renfrewshire schools from development:

School	Number of pupils affected
Gryffe High School	3
Linwood High School	2
Paisley Grammar School	1
St Benedict's High School	3
Total pupils (September 2019)	9

Equality Impact Assessment relating to:

Catchment Reviews: Kilbarchan, East Fulton and Woodlands Primary Schools; St Margaret's and Our Lady of Peace Primary Schools; and Johnstone and Linwood High Schools.

Officer and department responsible for completing the assessment.	Ian Thomson, Children's Services
Name of policy, strategy or project.	Catchment reviews affecting: Kilbarchan and East Fulton Primary Schools; Kilbarchan and Woodlands Primary Schools; St Margaret's and Our Lady of Peace Primary Schools; and Johnstone and Linwood High Schools.
What is the main purpose or aims of the policy, strategy or project?	<p>To address a potential capacity challenge at Kilbarchan Primary School. By adjusting the catchment areas all non-denominational pupils living in new housing developments at "Weir's Wynd" and "Houston Station House" will be rezoned to East Fulton Primary School which has adequate accommodation which can cope with the number of pupils generated from these new homes.</p> <p>To address a potential capacity challenge at Kilbarchan Primary School. By adjusting the catchment areas all non-denominational pupils living in new housing developments at "Johnstone Hospital" will be rezoned to Woodlands Primary School which has accommodation which can cope with the number of pupils generated from these new homes.</p> <p>To address a potential capacity challenge at St Margaret's Primary School. By adjusting the catchment areas all denominational pupils living in new housing developments at "Weir's Wynd", "Houston Station House" and "Johnstone Hospital" will be rezoned to Our Lady of Peace Primary School which has accommodation which can cope with the number of pupils generated from these new homes.</p> <p>The catchment alteration affecting Johnstone and Linwood High Schools ensures that all pupils attending Kilbarchan Primary School will transfer to Johnstone High School and all pupils attending East Fulton and Woodlands Primary Schools will transfer to Linwood High School. This means that pupils are</p>

	not separated from their classmates at the point of transition from primary to secondary school.
Who will be the beneficiaries of the policy/strategy/project?	This review would specifically affect the school communities noted above.
Has the policy/strategy/project been explained to those it might affect directly or indirectly?	<p>Yes. The education and children's services policy board approved the proposals to consult on these catchment reviews in August 2019. The consultation adhered to the Schools (Consultation) (Scotland) Act 2010 and it commenced on 18 November 2019.</p> <p>Equalities questionnaires were issued at the public meeting held on 26 November 2019 and any returns received are reviewed and responded to as part of the Council's report on the responses to the consultation.</p> <p>Education Scotland have also assessed the proposals and are supportive of the Council's approach.</p>
Have you consulted on the policy?	As above.

Complete the following table and give reasons/comment where:

- a) The policy/strategy/project could have a positive impact on any of the equality target groups or contributes to promoting equality, equal opportunities and improving relations with equality target groups.
- b) The policy/strategy/project could have a negative impact on any equality target groups. (If the impact is high a full EIA should be completed)

Equality group	Positive impact		Negative impact		Reason/comment
	High	Low	High	Low	
Race		✓		✓	
Sex		✓		✓	
Disability		✓		✓	
Religion / Belief		✓		✓	
Sexual Orientation		✓		✓	
Age		✓		✓	
Gender Reassignment		✓		✓	
Marriage and Civil Partnership		✓		✓	
Pregnancy and Maternity		✓		✓	

Schools (Consultation) (Scotland) Act 2010

Report by Education Scotland addressing educational aspects of the proposal by Renfrewshire Council to consult on catchment reviews affecting: Kilbarchan and East Fulton Primary Schools; Kilbarchan and Woodlands Primary Schools; St Margaret's and Our Lady of Peace Primary Schools; and Johnstone and Linwood High Schools.

February 2020

1. Introduction

1.1 This report from Education Scotland has been prepared by Her Majesty's Inspectors of Education (HM Inspectors) in accordance with the terms of the Schools (Consultation) (Scotland) Act 2010 ("the 2010 Act"). The purpose of the report is to provide an independent and impartial consideration of Renfrewshire Council's proposal to consult on catchment reviews affecting: Kilbarchan and East Fulton Primary Schools; Kilbarchan and Woodlands Primary Schools; St Margaret's and Our Lady of Peace Primary Schools; and Johnstone and Linwood High Schools. Section 2 of the report sets out brief details of the consultation process. Section 3 of the report sets out HM Inspectors' consideration of the educational aspects of the proposal, including significant views expressed by consultees. Section 4 summarises HM Inspectors' overall view of the proposal. Upon receipt of this report, the Act requires the council to consider it and then prepare its final consultation report. The council's final consultation report should include this report and must contain an explanation of how, in finalising the proposal, it has reviewed the initial proposal, including a summary of points raised during the consultation process and the council's response to them. The council has to publish its final consultation report three weeks before it takes its final decision.

1.2 HM Inspectors considered:

- ☐ the likely effects of the proposal for children and young people of the schools; any other users; children likely to become pupils within two years of the date of publication of the proposal paper; and other children and young people in the council area;
- ☐ any other likely effects of the proposal;
- ☐ how the council intends to minimise or avoid any adverse effects that may arise from the proposal; and
- ☐ the educational benefits the council believes will result from implementation of the proposal, and the council's reasons for coming to these beliefs.

1.3 In preparing this report, HM Inspectors undertook the following activities:

- ☐ attendance at the public meeting held on 26 November 2019 in connection with the council's proposals;
- ☐ consideration of all relevant documentation provided by the council in relation to the proposal, specifically the educational benefits statement and related consultation documents, written and oral submissions from parents and others; and
- ☐ visits to the site of Johnstone and Linwood High Schools, including discussion with relevant consultees.

2. Consultation process

2.1 Renfrewshire Council undertook the consultation on its proposal(s) with reference to the Schools (Consultation) (Scotland) Act 2010.

2.2 The formal consultation ran from 18 November 2019 to 21 January 2020. Communication was issued to all statutory stakeholders at the affected schools and in the community informing them of this consultation. Copies of the consultation document were also distributed to local libraries and a copy was placed on the council website. Adverts to notify the public of the consultation meeting were also placed in the local press.

2.3 A public meeting was held on 26 November 2019 in Woodlands Primary School. This was attended by around 20 stakeholders. All questions from attendees were responded to by the council.

2.4 During the consultation period there were the following written or online responses to four aspects of the proposal:

Proposal 1: Kilbarchan and East Fulton Primary Schools. One general enquiry was received and 47 responses were received via the on-line survey or questionnaire. Twenty-two responses (47%) were supportive of the proposal and 25 (53%) responses were against.

Proposal 2: Kilbarchan and Woodlands Primary Schools. There were 34 responses received via the on-line survey or questionnaire. Twenty responses (59%) were supportive of the proposal and 14 (41%) responses were against.

Proposal 3: St Margaret's and Our Lady of Peace Primary Schools. One general enquiry was received and 18 responses were received via the on-line survey or questionnaire. Eight responses (44%) were supportive of the proposal and 10 (56%) responses were against.

Proposal 4: Johnstone and Linwood High Schools. No general enquiries were received and 36 responses were via the on-line survey or questionnaire. Twenty-two responses (61%) were supportive of the proposal and 14 (39%) responses were against.

2.5 Each of the submissions were collated, analysed and responded to by the council and for the purposes of reporting they were grouped by areas of concern. These areas of concern were:

- ☐ approach to the consultation;
- ☐ building capacity - in relation to Kilbarchan Primary School being seen to be at capacity;
- ☐ class sizes;
- ☐ community - current and future catchment school area;
- ☐ financial - lack of teaching staff; and
- ☐ safety and transport - in relation to overflow of parking and traffic congestion.

3. Educational aspects of proposal

3.1 The council has set out a strong case for its proposal to re-zone catchment areas affecting: Kilbarchan and East Fulton Primary Schools; Kilbarchan and Woodlands Primary Schools; St Margaret's and Our Lady of Peace Primary Schools; and Johnstone and Linwood High Schools. In the council's report, Developing the School Estate Management Plan 2020, it was noted that new local housing developments are likely to put pressure on school accommodation in these areas. This could result in pupil numbers increasing at Kilbarchan Primary School, which would be beyond the building's operational capacity. Four individual consultation documents have been created, each of which, outline educational benefits of all affected schools. If approved these catchment alterations would be implemented in August 2021 for school session 2021-2022. HM Inspectors recognise that the proposal will help Renfrewshire Council in continuing to meet its statutory educational responsibilities.

3.2 The council has given due consideration to the potential educational benefits for children and young people affected by the proposal. These are outlined in the consultation documents, which highlight each school's capacity to meet projected increase in roll numbers. This includes consideration of the availability of operational space; both indoors and outdoors, space for teacher directed learning and breakout areas for independent or small group learning. Spaces to support the wellbeing of all children and young people, including quiet spaces to support emotional wellbeing of those with additional support needs. The proposal highlights potential health and wellbeing benefits for children and young people through increased physical activity and active travel to and from school. Overall, the proposal would enable the council to support all children and young people to achieve well within a school environment that can accommodate projected increases in roll numbers.

3.3 If approved, then all children and young people currently living in affected addresses would be entitled to continue attending the schools they currently attend. In line with the council's transport policy, children and young people currently entitled to free school transport would also continue to receive this support. Siblings of those pupils attending Kilbarchan and St Margaret's Primary Schools and Johnstone High School would also be entitled to attend these schools with their sibling, whilst their sibling is registered in the school when they enrol or transfer. The council would provide transition support to any pupils opting to change school as a result of this proposal.

3.4 Free school transport would only be provided for new P1 children attending Kilbarchan and St Margaret's Primary Schools and new S1 pupils attending Johnstone High School, in instances where pupils enrol in these schools at a time when their siblings still attend the school, and where that sibling is entitled to free school transport.

3.5 Denominational pupils living at addresses within housing developments at Merchiston Hospital and Houston Station are entitled to free school transport if they are currently attending St Margaret's Primary School. If this proposal is approved all pupils living at these addresses would be entitled to free school transport to Our Lady of Peace Primary School. However, if this proposal is approved, all denominational pupils living at addresses within the Johnstone Hospital site would be within one mile's walking distance of Our Lady of Peace Primary School and therefore would not be entitled to free school transport. This is in line with the council's free school transport policy.

3.6 All staff and young people at Johnstone High School who met with HM Inspectors indicated that they like the current size of school, recognising that class sizes allow good relations between staff and young people. They would welcome the likely increased roll numbers resulting from the proposal but are mindful that much larger numbers may add to pressures on social areas within the school.

3.7 Stakeholders from Kilbarchan Primary School recognise that if the council did not act, then the school roll is likely to increase from 80% capacity to well over 100%. They indicated that the proposal will help to reduce the need for another bus or more cars dropping off children, as car parking and congestion was already an issue. It will reduce any further pressure on space within the school.

3.8 All staff and young people at Linwood High School who met with HM Inspectors welcomed an increase in pupil numbers. Young people highlighted that Linwood is closer to the new housing development, and so the new plans made sense as it is easier to walk to school. There would be less need for cars and buses resulting in this being better for the environment. Costs to families for fuel or bus fares may be less too. Road safety may improve such as less crossing of busy roads than there is currently to school. Young people living in the area to be re-zoned, know the Linwood area better. There are opportunities for community links to improve, for example, the memorial garden and Christmas performance for local older adults. Young people thought the size of school

allowed more personal and bespoke experiences. Young people are aware that small school size limits course choice and more pupils might help with this.

3.9 The council also received a written submission from the Diocese of Paisley. The Diocese appreciated the challenges facing Renfrewshire Council with regard to its school estate. Having viewed the proposals outlined in the current consultation paper, and in particular the provisions for siblings of children in St Margaret's Primary School to opt to go there if so desired, the Diocese had no objections to the proposals.

4. Summary

The council's proposal provides a strong case to review catchment areas affecting: Kilbarchan and East Fulton Primary Schools; Kilbarchan and Woodlands Primary Schools; St Margaret's and Our Lady of Peace Primary Schools; and Johnstone and Linwood High Schools. The council recognises the potential impact of increasing roll numbers on Kilbarchan Primary School due to housing developments and is taking steps to resolve this through this proposal. The council outlines the associated educational benefits to all affected schools. HM Inspectors endorse this view. All children, young people and school staff who met with HM Inspectors were supportive of the proposal. In taking this forward, the council should, as part of its plans, consider road safety and safe walking routes to school. The council's proposal, should it proceed, will see improved alignment of localities to school catchment areas. This forward planning will assist the authority in managing the rolls in all affected schools.

**HM Inspectors
February 2020**