

Paisley East & Whitehaugh, Ralston, Hawkhead & Lochfield, Hunterhill and Charleston Local Profile: Background Information



#ourRenfrewshire

 Renfrewshire
Community Planning
Partnership

Population

How many people live here?

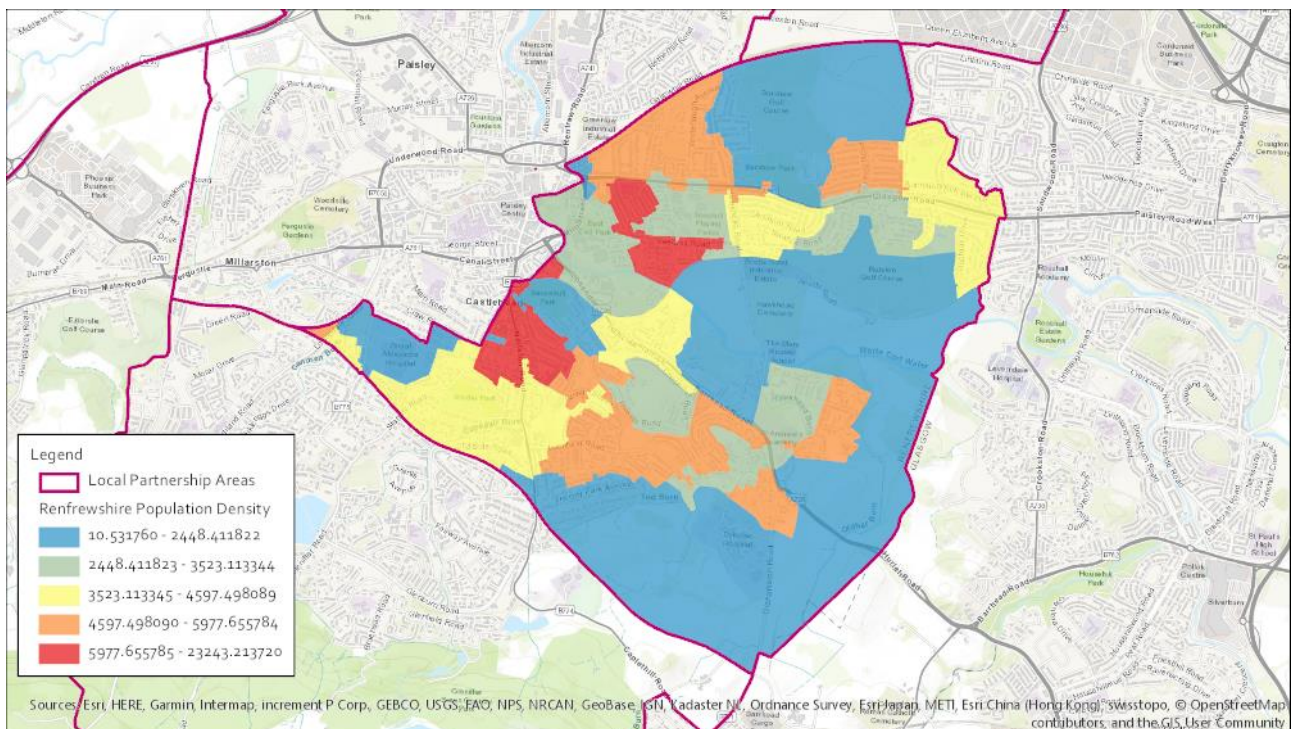
28,747 people in total live in the area and below are the main concentrations of population:

CHARLESTON	6113
PAISLEY EAST AND WHITEHAUGH	8163
RALSTON	4770
HUNTERHILL	2698
HAWKHEAD AND LOCHFIELD	7003

What age are people living here?

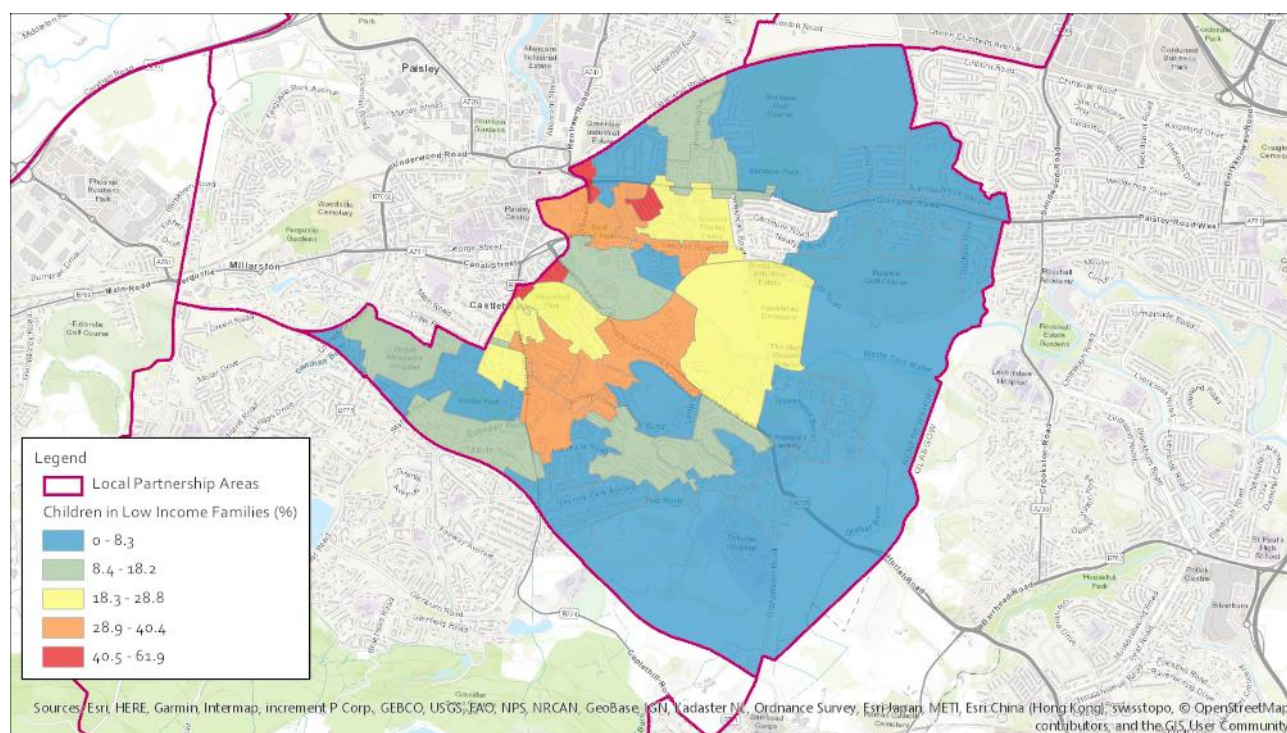
Paisley North East	14%	68%	19%
Paisley East	17%	65%	18%
Paisley Ralston	16%	60%	25%
Paisley South East	14%	63%	23%
Paisley Dykebar	20%	64%	16%
Overall	16%	64%	20%

Population Density



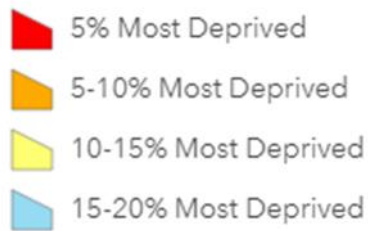
Children in Low Income Families

As recorded by the Scottish Index of Multiple Deprivation



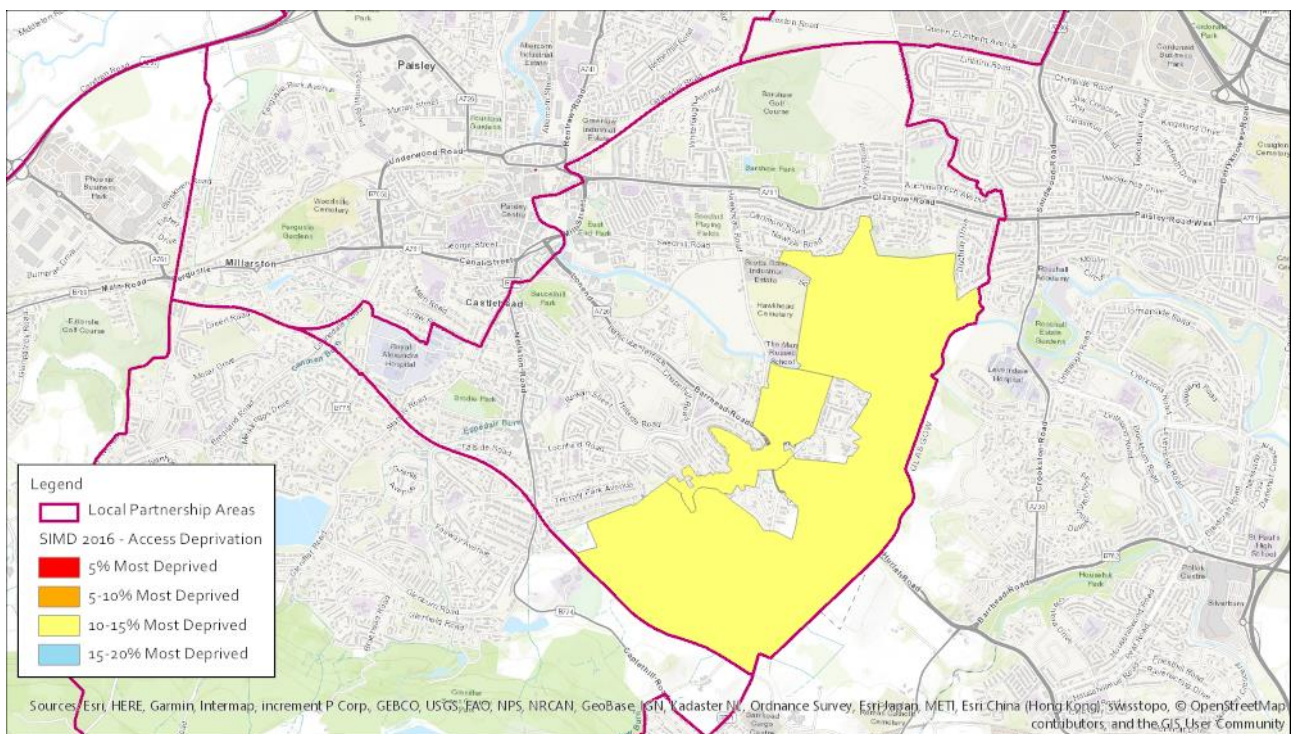
The tables below are also taken from the Scottish Index of Multiple Deprivation and show other dimensions of deprivation: access, health and crime. The key below applies to the following three tables.

SIMD 2016 - Access Deprivation



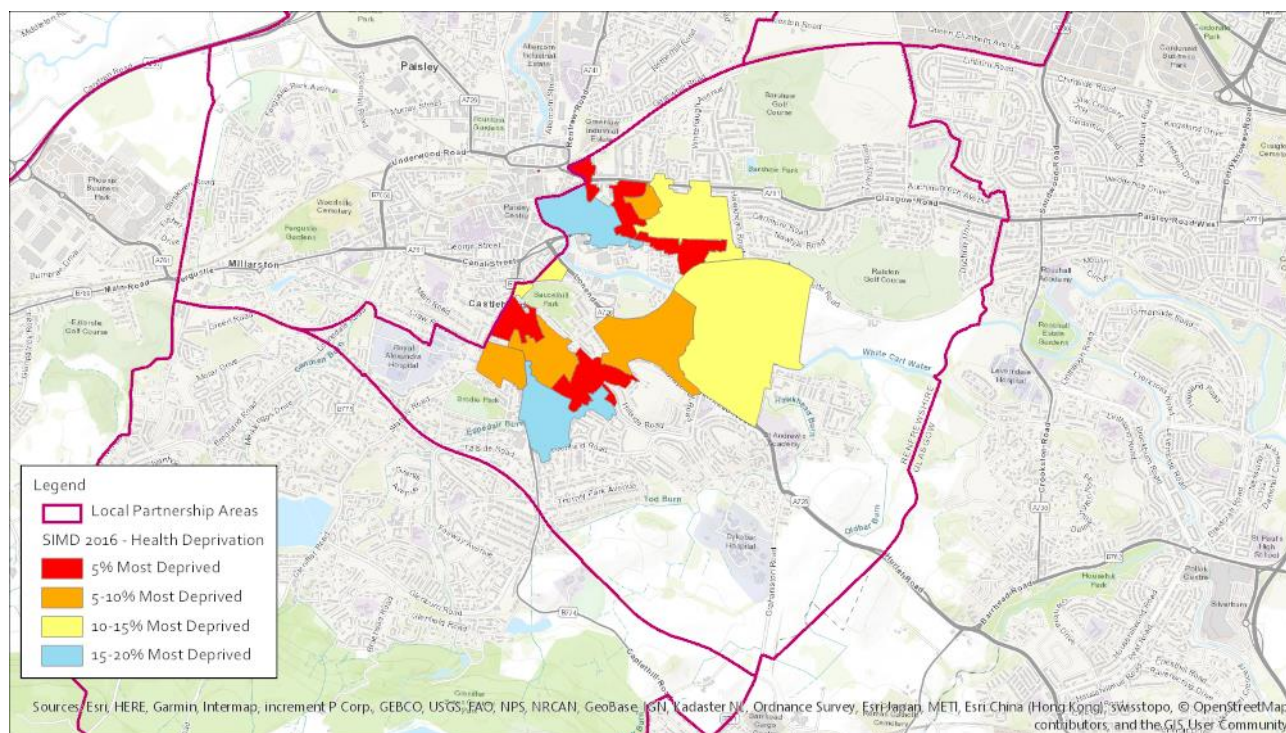
Access Deprivation

This measure includes drive time to GP, to retail centre, to petrol station, to primary and secondary schools, to post office and public transport time to GP, to retail centre, to post office.



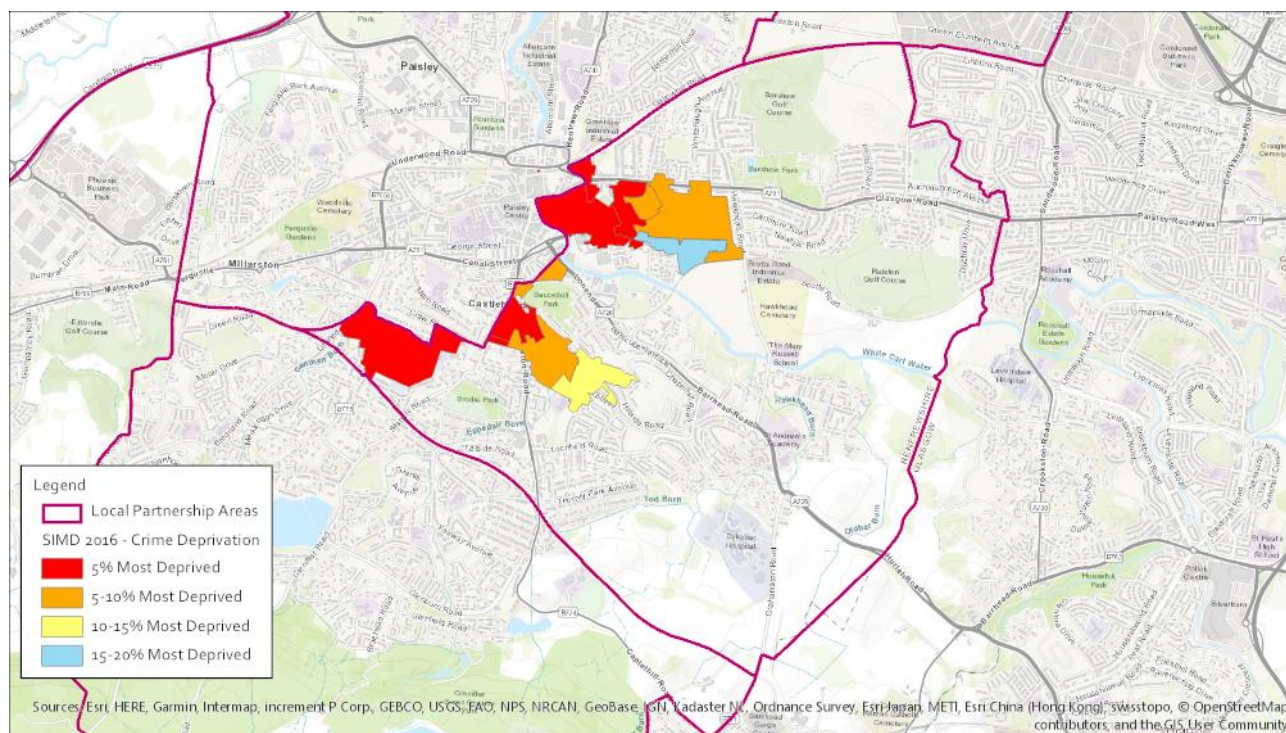
Health Deprivation

This measure includes the Standardised Mortality Ratio; Hospital stays related to alcohol misuse; Hospital stays related to drug misuse; Comparative Illness Factor; Emergency stays in hospital; Proportion of population being prescribed drugs for anxiety, depression or psychosis; and Proportion of live singleton births of low birth weight.



Crime Deprivation

This measure includes Domestic house breaking, Drug offences, Common assault, Crimes of violence, Vandalism and Sexual offences.



Place Standard, 2017

45 respondents in Paisley East were involved with the Our Renfrewshire, Place Standard consultation in 2017. 87% of the respondents were female, 11 % were male, with most respondents of working age.

Maintenance & safety came out top, as terms mentioned when thinking about priorities for the area. The wordle below shows the terms that were most frequently mentioned in the largest text, when discussing priorities for the area.



Most positive responses

Respondents felt most strongly positive about the following themes:



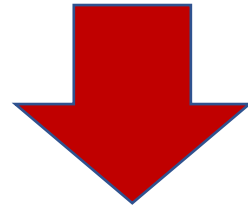
- Public Transport
- Natural space
- Streets and spaces
- Facilities and amenities
- Play and recreation
- Identity and belonging
- Social contact
- Housing and community

Least positive responses

Respondents felt negative about the following themes:

Work and local economy

Care and maintenance



Mixed responses

Most mixed responses were received about the traffics and parking; moving around; feeling safe; and influence and sense of control themes.

Children & Education

Education resources

Secondary School

Paisley Grammar School (non denominational)

St Andrew's Academy (denominational)

Primary Schools

Ralston Primary School (non denominational)

Williamsburgh Primary School (non denominational)

St John Ogilvie Primary School (denominational)

St Charles' Primary School (denominational)

Lochfield Primary School (non denominational)

Todholm Primary School (non denominational)

Mary Russell School (Additional Support Needs)

Kersland School (Additional Support Needs)

Nurseries

Ralston Nursery (Local Authority)

Williamsburgh Nursery (Local Authority)

Leaps And Bounds (private or voluntary sector)

Abbey Mill Childcare (private or voluntary sector)

Nursery Times Ltd (private or voluntary sector)

Carriagehill Nursery (private or voluntary sector)

St Charles' Nursery (Local Authority)

Jennyswell Nursery (private or voluntary sector)

Todholm Nursery (Local Authority)

Parks and Play Areas

Barshaw Park

Playpark, Ralston Community Centre

Allanton Playing Fields

Seedhill Playing Fields

Playpark to North of No 35, Mckerrell Street

East End Park

Playpark to North of Nos 23 to 29, Ben Lawers Drive

Jenny's Well Playing Field

Saucelhill Park

Hunterhill Park

Playpark to South of St Charles RC Primary School

Brodie Park

Health Resources

Royal Alexandra Hospital
ACCORD Hospice
Dykebar Hospital

GP Practices

The Mirin Practice
Mile End Mill
Anchor Mill Medical Practice
Abbey Medical Centre
The Consulting Rooms
Charleston Centre

Pharmacies & Dentists

Ralston Dental Practice
Boots Pharmacy
Barshaw Pharmacy
Kelburne Dental Practice
The Co-operative Pharmacy
Greenlaw Dental Care
Complete Dentistry
Abbey Chemist
Lloydspharmacy
Boots Pharmacy
Neilston Road Dental Group
Orthodontic Practice
The Co-operative Pharmacy

Care Homes, Extra Care & Sheltered Housing

Care Homes

Nightingale House (35 units)
Abbeycourt Care Centre (57 units)
Hunterhill Care Home (60 units)

Extra Care, Amenity & Sheltered Housing

Kelburne Gardens (49 units)
Garthland Lane (8 units)

Garthland Cottages (5 units)

Glentamar Court (38 units)

Barrhead Road (15 units)

Rowan Gardens (21 units)

Rowan Court (25 units)

Calside Court (16 units)

Union Court (21 units)

Hamilton Court (17 units)

Adult Health and Wellbeing across Renfrewshire

- 80% of people say their health is good or very good.
- 15% of people say they smoke, 10% drank alcohol at least twice per week.
- 7% of people feel isolated from family and friends.
- 46% say they have at least 5 portions of fruit and veg per day.
- 47% of people do 150 minutes of exercise per week.