

To: Renfrewshire Integration Joint Board

On: 28 January 2022

Report by: Head of Strategic Planning and Health Improvement

Heading: Climate Change Duties

Direction Required to Health Board, Council or Both	Direction to:	
	1. No Direction Required	X
	2. NHS Greater Glasgow & Clyde	
	3. Renfrewshire Council	
	4. NHS Greater Glasgow & Clyde and Renfrewshire Council	

1. Summary

- 1.1. The Scottish Government requires Integration Joint Boards (IJBs) to prepare annually a report on compliance with climate change duties which requires to be submitted to Sustainable Scotland Network by 30 November.
- 1.2. The Renfrewshire 2020/21 report is attached at Appendix 1 for retrospective approval, as was agreed in previous years.
- 1.3. Renfrewshire HSCP continues to support both Renfrewshire Council and NHS Greater Glasgow and Clyde in tackling the Climate Emergency and environmental challenges locally and across the Glasgow City region.

2. Recommendation

It is recommended that the IJB:

- Retrospectively approves the content of the compliance with climate change report 2020/21.

3. Background

- 3.1. The Climate Change (Scotland) Act 2009 and the subsequent Climate Change (Duties of Public Bodies: Reporting Requirements) (Scotland) Order 2015 requires significant public bodies to prepare a report on their compliance with climate change duties. This includes 'An integration joint

board established by order under section 9(2) of the Public Bodies (Joint Working) (Scotland) Act 2014(c)'.

- 3.2. Integration Joint Boards (IJBs) are required to submit the report on or before 30 November each year.
- 3.3. The Climate Change duties report is to a Scottish Government prescribed standard template, identical to that for all public bodies, such as local authorities and NHS boards, including Renfrewshire Council and NHS Greater Glasgow and Clyde. As a consequence, the Guidance accompanying the 2015 Order recognised that much of the standard report template related to the policies, procedures and services of the local authority and NHS board, rather than IJBs. As such, it was further recognised in the Guidance that there would be a significant degree of proportionality in completion of the report.
- 3.4. A significant element of the report relates to policies and emissions associated with the employment of staff, ownership and occupation of buildings, plant and vehicles, and the delivery of services. Therefore the input from IJB's is limited. Renfrewshire's Compliance with Climate Change Duties report 2020/2021 is appended to this report.
- 3.5. Renfrewshire HSCP recognises the urgent need to act to address the climate emergency and accelerate our efforts to cut greenhouse gas emissions and become environmentally sustainable. Many of the actions required to respond to the climate emergency crisis have positive health impacts and are so great that tackling climate change has also been described by the Lancet Commission as "*the greatest global health opportunity of the 21st century*".
- 3.6. As a result of this and the intrinsic links to poverty, tackling the climate emergency is recognised as a priority activity in our draft Strategic Plan 2022-2025.

Implications of the Report

1. **Financial** – n/a
2. **HR & Organisational Development** – n/a
3. **Community Planning** – n/a
4. **Legal** – This report ensure that the IJB complies with the Climate Change (Duties of Public Bodies: Reporting Requirements) (Scotland) Order 2015
5. **Property/Assets** – property remains in the ownership of the parent bodies.
6. **Information Technology** – n/a
7. **Equality & Human Rights** – The recommendations contained within this report have been assessed in relation to their impact on equalities and human rights. No negative impacts on equality groups or potential for infringement have been identified arising from the recommendations contained in the report. If required

following implementation, the actual impact of the recommendations and the mitigating actions will be reviewed and monitored, and the results of the assessment will be published on the Council's website.

- 8. **Health & Safety** – n/a
- 9. **Procurement** – procurement activity will remain within the operational arrangements of the parent bodies.
- 10. **Risk** – None.
- 11. **Privacy Impact** – n/a.

List of Background Papers – none

Author: Yvonne Farquhar, Service Planning and Policy Development Manager,
Chief Executive's Service, Renfrewshire Council

Any enquiries regarding this paper should be directed to Frances Burns, Head of Strategic Planning and Health Improvement (frances.burns@renfrewshire.gov.uk)
--

Public Sector Report on Compliance with Climate Change Duties 2021 Template

1. Introduction

This template is for public bodies required to produce annual climate change reports under the 'Climate Change (Duties of Public Bodies; Reporting Requirements) (Scotland) Order 2015'.

The template covers all six parts of the required reporting form, as well as the recommended reporting section on public bodies' wider influence.

All information and data must be entered using this master template available on the SSN website.

Reports must be submitted to ccreporting@ed.ac.uk by 30th November. Reports submitted after this date means the organisation will be non-compliant with Public Bodies Duties legislative reporting requirements.

2. Guidance

- 1. Please save-as this workbook with your organisations name somewhere in the title before completing
- 2. Please fill out question 1f
- 3. Sufficient rows should be available but if you need to add more please email the file to ccreporting@ed.ac.uk
- 4. Homeworking emissions - Please include an estimate of emissions associated with homeworking in the designated row provided in table 3b
In order for this to be calculated correctly users must complete Q1c relating to number of full time employees (FTEs)
- 5. For question 4d - please complete the optional text box instead of the original table which relates specifically to SCCAP1.
- 6. Local Authorities reporting in the recommended section 1a should select their local authority region at the top of the sheet
and their emissions will be provided automatically from BEIS datasets

3. Colour Coding used in the template

	Drop down box selection for users to select from list of options
	Uneditable/fix entry cells
	Editable cells for users to report in freely



Public Sector Report on Compliance with Climate Change Duties 2021 Template

PART 1 Profile of Reporting Body

1a Name of reporting body
Provide the name of the listed body (the "body") which prepared this report.

Renfrewshire

1b Type of body
Select from the options below

Integration Joint Boards

1c Highest number of full-time equivalent staff in the body during the report year

0

THIS MUST BE COMPLETED

1d Metrics used by the body
Specify the metrics that the body uses to assess its performance in relation to climate change and sustainability.

Metric	Units	Value	Comments
Please select from drop down box			
Please select from drop down box			
Please select from drop down box			
Please select from drop down box			
Please select from drop down box			
Please select from drop down box			
Please select from drop down box			
Please select from drop down box			
Other (please specify in comments)			Metrics are not relevant to the assessment of the health and social care partnership
Other (please specify in comments)			
Other (please specify in comments)			
Other (please specify in comments)			
Other (please specify in comments)			
Other (please specify in comments)			
Other (please specify in comments)			

1e Overall budget of the body
Specify approximate £/annum for the report year.

Budget	Budget Comments
£72251,302	2020/21

1f Report type
Specify the report year type

Report type	Report year comments
Financial	THIS MUST BE COMPLETED

1g Context
Provide a summary of the body's nature and functions that are relevant to climate change reporting.

Renfrewshire Health and Social Care Partnership is responsible for commissioning community health and adult social care services. All community health services are commissioned from NHS Greater Glasgow and Clyde (NHSGGC), with all social care services commissioned from Renfrewshire Council. Although the HSCP does not directly employ any staff, own any buldings, it is fully committed to and actively participates in tackling the climate emergency in association with it's two parent organisations - NHSGGC and Renfrewshire Council and with community planning partners.

PART 2 Governance, Management and Strategy

Governance and management

2a How is climate change governed in the body?

Provide a summary of the roles performed by the body's governance bodies and members in relation to climate change. If any of the body's activities in relation to climate change sit outside its own governance arrangements (in relation to, for example, land use, adaptation, transport, business travel, waste, information and communication technology, procurement or behaviour change), identify these activities and the governance arrangements. Provide a diagram / chart to outline the governance structure within the body.

Renfrewshire's Integration Joint Board is the corporate body which has responsible for the planning and delivery of health and adult social care functions which have been delegated by Renfrewshire Council and NHS Greater Glasgow and Clyde Health Board (know as the parent organisations), refer to the diagram below.

In June 2019, Renfrewshire Council declared a climate emergency which resulted in the establishment of the Climate Change Sub-Committee which is made up of cross-party elected members and works closely with officers to steer the direction of our response to the climate emergency. The group meets every two to three months and helps officers from across the Council and HSCP drive the changes that we need to make.

In June 2020, NHS Greater Glasgow and Clyde and Renfrewshire Council joined forces with other organisations across the Glasgow City region to adopt a shared vision, strategy and action plan to ensure Glasgow can flourish in the face of climate change and the environmental challenges of the future.Climate Ready Clyde brings over 100+ partners together to work strategically to minimise the risks and seize the opportunities this brings for our economy, society and environment. The Climate Ready Clyde Board meets on a quarterly basis and both Renfrewshire Council and NHSGGC have representation on the Board.



2b How is climate change action managed and embedded in the body?

Provide a summary of how decision-making in relation to climate change action by the body is managed and how responsibility is allocated to the body's senior staff, departmental heads etc. If any such decision-making sits outside the body's own governance arrangements (in relation to, for example, land use, adaptation, transport, business travel, waste, information and communication technology, procurement or behaviour change), identify how this is managed and how responsibility is allocated outside the body. Provide a diagram to show how responsibility is allocated to the body's senior staff, departmental heads etc.

The accountability and responsibility for climate change governance in relation to the delivery of the delegated services remains with the constituent bodies – Renfrewshire Council and NHS Greater Glasgow and Clyde. However, the draft Strategic Plan 2022-25 Plan reflects and supports the delivery of local and national plans for net-zero.

Renfrewshire Council Arrangements

In addition to the Climate Change Sub-Committee, all Council reports are required to consider if there any implications relating to the climate emergency. The Council's Corporate Management Team (CMT) plays a key leadership role in tackling the climate emergency and Renfrewshire's response and ensures that staff and key stakeholders are kept well informed. The CMT is comprised of senior staff from all services (including the HSCP Interim Chief Officer) and meets on a weekly basis.

NHSGGC Arrangements

NHSGGCC Board approved an Environmental Sustainability Policy, which aims to develop a sustainable organisation that is financially sustainable, environmentally sustainable, and socially equitable. This approach to sustainability is coordinated by the Sustainability Planning Implementation Group (SPIG), chaired by the Director of Estates and Facilities. In addition the Board remains committed to the Glasgow Climate Change Declaration Sustainable Glasgow.

Both Renfrewshire Council and NHSGGC are active participants in Climate Ready Clyde, which promotes inter-agency working within the Glasgow and Clyde geographical boundaries to improve how the organisations adapts to climate change issues and how these changes will affect their ability to continue to deliver a high quality service.



Strategy

2c Does the body have specific climate change mitigation and adaptation objectives in its corporate plan or similar document?

Provide a brief summary of objectives if they exist.

Wording of objective	Name of document	Document Link
Develop a Climate Change (Net Zero) action plan for HSCP services to reflect and support Renfrewshire Council's Plan for Net Zero, working with the Council's Climate Change Sub-committee, and taking into account the Scottish Government's commitments in the 2021-22 Programme for Government.	Renfrewshire HSCP Draft Strategic Plan 2022 - 2025	https://www.renfrewshire.hscp.scot/strategicplan
Deliver social housing new build that aims to meet Renfrewshire's climate change commitments, through delivering homes that are sustainable for tenants and the environment. Thus, removing poor energy efficiency as a driver for fuel poverty.	Renfrewshire HSCP Draft Strategic Plan 2022 - 2025	https://www.renfrewshire.hscp.scot/strategicplan

2d Does the body have a climate change plan or strategy?

If yes, provide the name of any such document and details of where a copy of the document may be obtained or accessed.

2e Does the body have any plans or strategies covering the following areas that include climate change?
Provide the name of any such document and the timeframe covered.

Topic area	Name of document	Link	Time period covered	Comments
Adaptation				
Business travel				
Staff Travel				
Energy efficiency				
Fleet transport				
ICT				
Renewable energy				
Sustainable/renewable heat				
Waste management				
Water and sewerage				
Land Use				
Other (please specify in comments)				

2f What are the body's top 5 priorities for climate change governance, management and strategy for the year ahead?
Provide a brief summary of the body's areas and activities of focus for the year ahead.

- o Promoting reduction of waste produced and increased recycling in daily operations
 - o Promoting sustainable and active travel where possible for improved health and wellbeing and social outcomes
 - o Promoting increased greening around associated buildings and centres to improve nature and biodiversity, improve mental health and reduce stress of people using local services
 - o Promoting energy efficiency improvements and signposting people to advice and support, including additional benefit payments that they may be entitled to in order to remove poor energy efficiency as a driver for fuel poverty and improve health and wellbeing and social outcomes

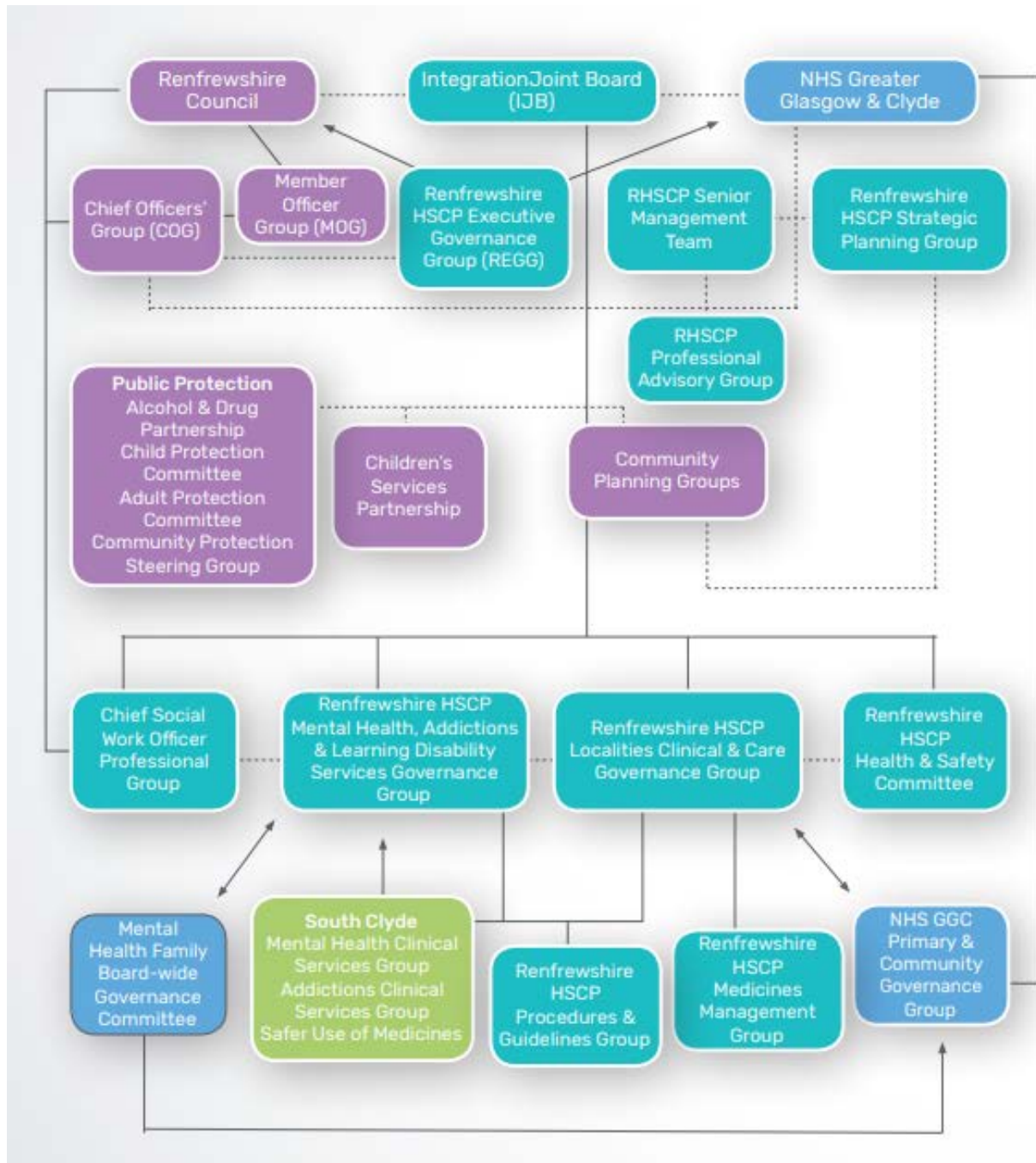
2g Has the body used the Climate Change Assessment Tool (a) or equivalent tool to self-assess its capability / performance?
If yes, please provide details of the key findings and resultant action taken.

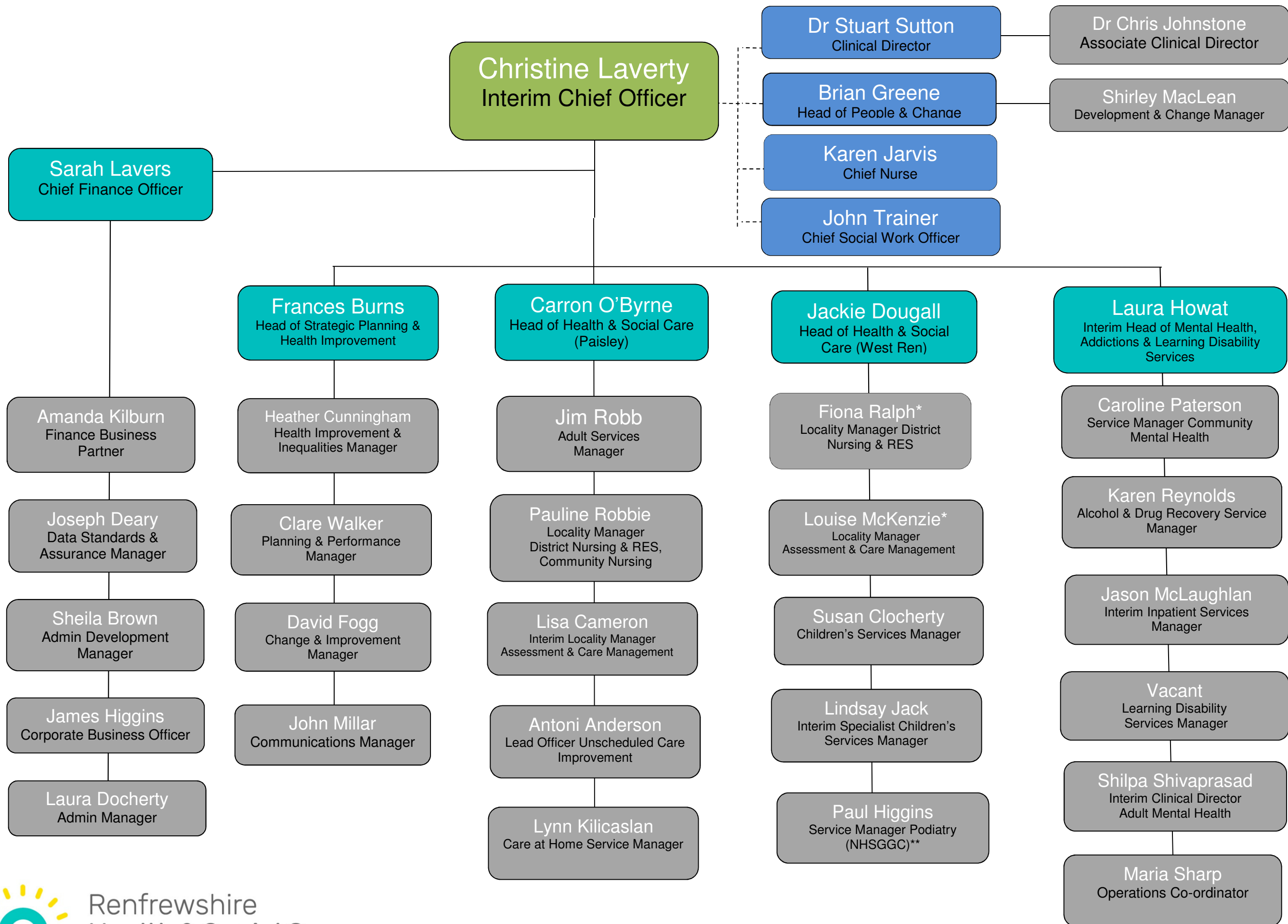
(a) This refers to the tool developed by Resource Efficient Scotland for self-assessing an organisation's capability / performance in relation to climate change.

Further information

2h Supporting information and best practice
Provide any other relevant supporting information and any examples of best practice by the body in relation to governance, management and strategy.

Renfrewshire HSCP Governance Arrangements





PART 3 Corporate Emissions, Targets and Project Data

Emissions

3a Emissions from the start of the year which the body uses as a baseline (for its carbon footprint) to the end of the report year

Complete the following table using the greenhouse gas emissions total for the body calculated on the same basis as for its annual carbon footprint / management reporting or, where applicable, its sustainability reporting. Include greenhouse gas emissions from the body's estate and operations (a) (measured and reported in accordance with Scopes 1 & 2 and, to the extent applicable, selected Scope 3 of the Greenhouse Gas Protocol (b). If data is not available for any year from the start of the baseline year to the end of the report year, provide an explanation in the comments column.

(a) No information is required on the effect of the body on emissions which are not from its estate and operations.

(b) This refers to the document entitled "The greenhouse gas protocol. A corporate accounting and reporting standard (revised edition)", World Business Council for Sustainable Development, Geneva, Switzerland / World Resources Institute, Washington DC, USA (2004), ISBN: 1-56973-568-9.

ENSURE QUESTION 1f IS COMPLETED BEFORE STARTING THIS SECTION, THEN SELECT APPROPRIATE BASELINE YEAR

Reference year	Year	Year type	Scope 1	Scope 2	Scope 3	Total	Units	Comments
Baseline Year	Please select from drop down box	Financial				-	tCO ₂ e	
Year 1 carbon footprint		Financial				-	tCO ₂ e	
Year 2 carbon footprint		Financial				-	tCO ₂ e	
Year 3 carbon footprint		Financial				-	tCO ₂ e	
Year 4 carbon footprint		Financial				-	tCO ₂ e	
Year 5 carbon footprint		Financial				-	tCO ₂ e	
Year 6 carbon footprint		Financial				-	tCO ₂ e	
Year 7 carbon footprint		Financial				-	tCO ₂ e	
Year 8 carbon footprint		Financial				-	tCO ₂ e	
Year 9 carbon footprint		Financial				-	tCO ₂ e	
Year 10 carbon footprint		Financial				-	tCO ₂ e	
Year 11 carbon footprint		Financial				-	tCO ₂ e	
Year 12 carbon footprint		Financial				-	tCO ₂ e	
Year 13 carbon footprint		Financial				-	tCO ₂ e	
Year 14 carbon footprint		Financial				-	tCO ₂ e	
Year 15 carbon footprint		Financial				-	tCO ₂ e	

3b Breakdown of emissions sources

Complete the following table with the breakdown of emission sources from the body's most recent carbon footprint (greenhouse gas inventory); this should correspond to the last entry in the table in 3(a) above. Use the 'Comments' column to explain what is included within each category of emission source entered in the first column. If there is no data consumption available for an emission source enter the emissions in kgCO₂e in the 'Consumption' column of one of the "Other" rows and assign the scope and an emission factor of 1.

(a) Emissions factors are published annually by the UK Department for Business, Energy & Industrial Strategy

Emission Factor Year2020The emission factor year is assigned based on your answer to Q1f, if you think it is incorrect please contact SSN.

User defined emission sources and sources where only emissions are known should be entered at the bottom of the table in the space provided

Emission source	Scope	Consumption data	Units	Emission factor	Units	Emissions (tCO ₂ e)	Comments
Please select from drop down box	Please select from drop down box					-	
Homeworking emissions	Scope 3		percentage of total FTEs home-based	0.30000	tCO ₂ e/FTE/annum	-	
Other (please specify in comments)	Please select from drop down box					-	
						0.0	

3c Generation, consumption and export of renewable energy

Provide a summary of the body's annual renewable generation (if any), and whether it is used or exported by the body.

Technology	Renewable Electricity		Renewable Heat		Comments
	Total consumed by the body (kWh)	Total exported (kWh)	Total consumed by the body (kWh)	Total exported (kWh)	
Please select from drop down box					

Targets

3d Organisational targets

List all of the body's targets of relevance to its climate change duties. Where applicable, overall carbon targets and any separate land use, energy efficiency, waste, water, information and communication technology, transport, travel and heat targets should be included.

Name of target	Type of target	Target	Units	Boundary/scope of target	Year used as baseline	Baseline figure	Units of baseline	Target completion year	Progress against target	Comments
	Please select from drop down box		Please select from drop down box	Please select from drop down box	Please select from drop down box		Please select from drop down box	Please select from drop down box		

Projects and changes

3e Estimated total annual carbon savings from all projects implemented by the body in the report year

If no projects were implemented against an emissions source, enter "0".
If the body does not have any information for an emissions source, enter "Unknown".
If the body does not include the emissions source in its carbon footprint, enter "N/A".

Emissions source	Total estimated annual carbon savings (tCO ₂ e)	Comments
Electricity		
Natural gas		
Other heating fuels		
Waste		
Water and sewerage		
Travel		
Fleet transport		
Other (please specify in comments)		
Total	-	

3f Detail the top 10 carbon reduction projects to be carried out by the body in the report year

Provide details of the 10 projects which are estimated to achieve the highest carbon savings during report year.

Project name	Funding source	First full year of CO ₂ e savings	Are these savings figures estimated or actual?	Capital cost (£)	Operational cost (£/annum)	Project lifetime (years)	Primary fuel/emission source saved	Estimated carbon savings per year (tCO ₂ e/annum)	Estimated costs savings (£/annum)	Behaviour Change
		Please select from drop down box	Please select from drop down box				Please select from drop down box			Please select from dropdown box

3g Estimated decrease or increase in the body's emissions attributed to factors (not reported elsewhere in this form) in the report year

If the emissions increased or decreased due to any such factor in the report year, provide an estimate of the amount and direction

Emissions source	Total estimated annual emissions (tCO ₂ e)	Increase or decrease in emissions	Comments
Estate changes		Please select from drop down box	
Service provision		Please select from drop down box	
Staff numbers		Please select from drop down box	

	Other (please specify in comments)		Please select from drop down box	
	Total		-	

3h

Anticipated annual carbon savings from all projects implemented by the body in the year ahead

If no projects are expected to be implemented against an emissions source, enter "0".
If the organisation does not have any information for an emissions source, enter "Unknown".
If the organisation does not include the emissions source in its carbon footprint, enter "N/A".

Emissions source	Total estimated annual carbon savings (tCO ₂ e)	Comments
Electricity		
Natural gas		
Other heating fuels		
Waste		
Water and sewerage		
Travel		
Fleet Transport		
Other (please specify in comments)		
Total	-	

3i

Estimated decrease or increase in emissions from other sources in the year ahead

If the body's corporate emissions are likely to increase or decrease for any other reason in the year ahead, provide an estimate of the amount and direction.

Emissions source	Total estimated annual emissions (tCO ₂ e)	Increase or decrease in emissions	Comments
Estate changes		Please select from drop down box	
Service provision		Please select from drop down box	
Staff numbers		Please select from drop down box	
Other (please specify in comments)		Please select from drop down box	
Total		-	

3j

Total carbon reduction project savings since the start of the year which the body used as a baseline for its carbon footprint

If the body has data available, estimate the total emissions savings made from projects since the start of that year ("the baseline year").

Total savings	Total estimated emissions savings (tCO ₂ e)	Comments
Total project savings since baseline year		

Further information

3k

Supporting information and best practice

Provide any other relevant supporting information and any examples of best practice by the body in relation to corporate emissions, targets and projects.

Public Sector Report on Compliance with Climate Change Duties 2021 Template

PART 4 Adaptation

Assessing and managing risk

4a	<p>Has the body assessed current and future climate-related risks?</p> <p>If yes, provide a reference or link to any such risk assessment(s).</p>
----	--

As stated previously, this is undertaken by both parent organisations - Renfrewshire Council and NHSGCG	
---	--

A decorative horizontal bar at the top of the page, divided into three segments: a small green square on the left, a large white rectangle in the center, and a medium green rectangle on the right.

4b	<p>What arrangements does the body have in place to manage climate-related risks?</p> <p>Provide details of any climate change adaptation strategies, action plans and risk management procedures, and any climate change adaptation policies which apply across the body.</p>
----	---

<p>In partnership with Renfrewshire Council, Renfrewshire's climate plan is currently being prepared and will set out the joint strategic framework required to meet our ambitious climate change targets and will outline the key plans, policies and activities and provide the direction we need to become carbon-neutral. Using expert research, we will identify the immediate, medium-term and long-term risks, as well as setting out the actions required to mitigate them. It will also set out how we will collaborate with local businesses and organisations and with the local community, and how we will equip and support all our partners and stakeholders to play their part in our action against climate change.</p> <p>Renfrewshire HSCP have a Risk Management Framework which sets out our arrangements for recording, managing and reporting all risks which includes climate risks. This framework also indicates how we liaise with our partner organisations regards to the sharing and transfer of risk ownership.</p>

Taking action	
1	Identify the problem and the people involved
2	Set clear goals and objectives
3	Develop a plan of action
4	Implement the plan
5	Monitor progress and evaluate results
6	Adjust the plan as needed
7	Communicate progress and results
8	Reflect on the experience and learn from it

4c	<p>What action has the body taken to adapt to climate change?</p> <p>Include details of work to increase awareness of the need to adapt to climate change and build the capacity of staff and stakeholders to assess risk and implement action.</p>
----	--

	<p>This is firmly embedded in our strategic plan and therefore also in our local and service action plans for all staff to be aware of what we are delivering and aiming to achieve. In addition, we ensure that staff are provided with updates via senior management meetings, the leaders forums and in staff briefings.</p>	
--	---	--

4d	<p>Where applicable, what progress has the body made in delivering the policies and proposals referenced N1, N2, N3, B1, B2, B3, S1, S2 and S3 in the Scottish Climate Change Adaptation Programme(a) (“the Programme”)?</p> <p>If the body is listed in the Programme as an body responsible for the delivery of one or more policies and proposals under the objectives N1, N2, N3, B1, B2, B3, S1, S2 and S3, provide details of the progress made by the body in delivering each policy or proposal in the report year. If it is not responsible for delivering any policy or proposal under a particular objective enter “N/A” in the ‘Delivery progress’ column for that objective.</p>
----	---

(a) This refers to the programme for adaptation to climate change laid before the Scottish Parliament under section 53(2) of the Climate Change (Scotland) Act 2009 (asp 12) which currently has effect. The most recent one is entitled "Climate Ready Scotland: Scottish Climate Change Adaptation Programme" dated May 2014

Objective	Objective reference	Theme	Policy / Proposal reference	Delivery progress made	Comments
Understand the effects of climate change and their impacts on the natural environment.	N1	Natural Environment	Please select from drop down box		
Understand the effects of climate change and their impacts on the natural environment.	N1	Natural Environment	Please select from drop down box		
Understand the effects of climate change and their impacts on the natural environment.	N1	Natural Environment	Please select from drop down box		

[illegible]

	Understand the effects of climate change and their impacts on buildings and infrastructure networks.	B1	Buildings and infrastructure networks	Please select from drop down box		
	Understand the effects of climate change and their impacts on buildings and infrastructure networks.	B1	Buildings and infrastructure networks	Please select from drop down box		
	Understand the effects of climate change and their impacts on buildings and infrastructure networks.	B1	Buildings and infrastructure networks	Please select from drop down box		
	Provide the knowledge, skills and tools to manage climate change impacts on buildings and infrastructure.	B2	Buildings and infrastructure networks	Please select from drop down box		
	Provide the knowledge, skills and tools to manage climate change impacts on buildings and infrastructure.	B2	Buildings and infrastructure networks	Please select from drop down box		
	Provide the knowledge, skills and tools to manage climate change impacts on buildings and infrastructure.	B2	Buildings and infrastructure networks	Please select from drop down box		
	Provide the knowledge, skills and tools to manage climate change impacts on buildings and infrastructure.	B2	Buildings and infrastructure networks	Please select from drop down box		
	Provide the knowledge, skills and tools to manage climate change impacts on buildings and infrastructure.	B2	Buildings and infrastructure networks	Please select from drop down box		
	Provide the knowledge, skills and tools to manage climate change impacts on buildings and infrastructure.	B2	Buildings and infrastructure networks	Please select from drop down box		
	Provide the knowledge, skills and tools to manage climate change impacts on buildings and infrastructure.	B2	Buildings and infrastructure networks	Please select from drop down box		
	Provide the knowledge, skills and tools to manage climate change impacts on buildings and infrastructure.	B2	Buildings and infrastructure networks	Please select from drop down box		
	Provide the knowledge, skills and tools to manage climate change impacts on buildings and infrastructure.	B2	Buildings and infrastructure networks	Please select from drop down box		
	Provide the knowledge, skills and tools to manage climate change impacts on buildings and infrastructure.	B2	Buildings and infrastructure networks	Please select from drop down box		
	Provide the knowledge, skills and tools to manage climate change impacts on buildings and infrastructure.	B2	Buildings and infrastructure networks	Please select from drop down box		
	Provide the knowledge, skills and tools to manage climate change impacts on buildings and infrastructure.	B2	Buildings and infrastructure networks	Please select from drop down box		
	Increase the resilience of buildings and infrastructure networks to sustain and enhance the benefits and services provided.	B3	Buildings and infrastructure networks	Please select from drop down box		
	Increase the resilience of buildings and infrastructure networks to sustain and enhance the benefits and services provided.	B3	Buildings and infrastructure networks	Please select from drop down box		
	Increase the resilience of buildings and infrastructure networks to sustain and enhance the benefits and services provided.	B3	Buildings and infrastructure networks	Please select from drop down box		
	Increase the resilience of buildings and infrastructure networks to sustain and enhance the benefits and services provided.	B3	Buildings and infrastructure networks	Please select from drop down box		
	Understand the effects of climate change and their impacts on people, homes and communities.	S1	Society	Please select from drop down box		Work in partnership with Renfrewshire Council as part of Plan for Net Zero to signpost people to advice and support to mitigate against the impacts of climate change
	Increase the awareness of the impacts of climate change to enable people to adapt to future extreme weather events.	S2	Society	Please select from drop down box		Work in partnership with Renfrewshire Council as part of Plan for Net Zero to raise awareness of potential impacts of climate change on daily lives and ensure they are signposted to available advice and support
	Increase the awareness of the impacts of climate change to enable people to adapt to future extreme weather events.	S2	Society	Please select from drop down box		
	Increase the awareness of the impacts of climate change to enable people to adapt to future extreme weather events.	S2	Society	Please select from drop down box		
	Increase the awareness of the impacts of climate change to enable people to adapt to future extreme weather events.	S2	Society	Please select from drop down box		
	Increase the awareness of the impacts of climate change to enable people to adapt to future extreme weather events.	S2	Society	Please select from drop down box		
	Support our health services and emergency responders to enable them to respond effectively to the increased pressures associated with a changing climate.	S3	Society	Please select from drop down box		Work in partnership with Renfrewshire Council and all community partner organisations to ensure all are aware of where our most vulnerable citizens are, e.g. those whose medication may make them more susceptible to extreme temperatures, those with mobility issues who would be unable to escape rising flood levels unaided, so that support mechanisms are in place
	Support our health services and emergency responders to enable them to respond effectively to the increased pressures associated with a changing climate.	S3	Society	Please select from drop down box		

Support our health services and emergency responders to enable them to respond effectively to the increased pressures associated with a changing climate.	S3	Society	Please select from drop down box		
Support our health services and emergency responders to enable them to respond effectively to the increased pressures associated with a changing climate.	S3	Society	Please select from drop down box		

4d (optional) Where applicable, what contributions have been made to the (SCAAP2) Programme?

Review, monitoring and evaluation

4e What arrangements does the body have in place to review current and future climate risks?
Provide details of arrangements to review current and future climate risks, for example, what timescales are in place to review the climate change risk assessments referred to in Question 4(a) and adaptation strategies, action plans, procedures and policies in Question 4(b).

4f What arrangements does the body have in place to monitor and evaluate the impact of the adaptation actions?
Please provide details of monitoring and evaluation criteria and adaptation indicators used to assess the effectiveness of actions detailed under Question 4(c) and Question 4(d).

Future priorities for adaptation

4g What are the body's top 5 climate change adaptation priorities for the year ahead?
Provide a summary of the areas and activities of focus for the year ahead.

Further information

4h Supporting information and best practice
Provide any other relevant supporting information and any examples of best practice by the body in relation to adaption.



Public Sector Report on Compliance with Climate Change Duties 2021 Template

PART 5 Procurement

5a How have procurement policies contributed to compliance with climate change duties?

Provide information relating to how the procurement policies of the body have contributed to its compliance with climate changes duties.

Procurement policies are developed and implemented by the two parent organisations - NHSGGC and Renfrewshire Council

5b How has procurement activity contributed to compliance with climate change duties?

Provide information relating to how procurement activity by the body has contributed to its compliance with climate changes duties.

n/a

Further information

5c Supporting information and best practice

Provide any other relevant supporting information and any examples of best practice by the body in relation to procurement.

n/a

Public Sector Report on Compliance with Climate Change Duties 2021 Template

PART 6 Validation and Declaration

6a

Internal validation process

Briefly describe the body’s internal validation process, if any, of the data or information contained within this report.

The information contained within this report has been prepared across a number of HSCP services.

6b

Peer validation process

Briefly describe the body’s peer validation process, if any, of the data or information contained within this report.

The information contained within this report has been provided in consultation with colleagues in Renfrewshire Council.

6c

External validation process

Briefly describe the body’s external validation process, if any, of the data or information contained within this report.

n/a

6d

No Validation Process

If any information provided in this report has not been validated, identify the information in question and explain why it has not been validated.

n/a

6e

Declaration

I confirm that the information in this report is accurate and provides a fair representation of the body’s performance in relation to climate change.

Name:	Christine Lavery
Role in the body:	Interim Chief Officer
Date:	30/11/2021

Recommended Reporting: Reporting on Wider Influence

Wider Impact and Influence on GHG Emissions

Q31 Historic Emissions (Local Authorities Only)

Please indicate emission amounts and unit of measurement (e.g. tCO₂e) and years. Please provide information on the following components using data from the links provided below. Please use (1) as the default unless targets and actions relate to (2).

(1) UK local and regional CO₂ emissions: [subset dataset](#) (emissions within the scope of influence of local authorities);

(2) UK local and regional CO₂ emissions: [full dataset](#);

<https://data.gov.uk/dataset/7732334-273-5672863-c8b93a3a0ff/emissions-of-carbon-dioxide-by-local-authority-area>

Local Authority (Please State)	Please select from drop down box														
BES Dataset (full or sub-set)	Please select from drop down box														
Source	Sector	2008	2009	2010	2011	2012	2013	2014	2015	2016	2017	2018	2019	Units	Comments
BES Sectors	Total Emissions													tCO ₂ e	
	Industry and Commercial													tCO ₂ e	
	Domestic													tCO ₂ e	
	Transport total													tCO ₂ e	
Net Carbon														tCO ₂ e	
Other Sectors	Please select from drop down box													Please select from drop down box	

2.41 Targets

Please detail your wider influence targets

Sector	Description	Type of Target (units)	Baseline value	Start year	Target	Target/End year	Saving in latest year measured	Latest Year Measured	Comments
Please select from drop down box		Please select from drop down box	Please select from drop down box			Please select from drop down box		Please select from drop down box	

2.42 Does the organisation have an overall mission statement, strategies, plans or policies outlining ambition to influence emissions beyond your corporate boundaries? If so, please detail this in the box below.

Q33 Policies and Actions to Reduce Emissions

Please detail any of the specific policies and actions which are underway to achieve your emission reduction targets

Sector	Start year for policy/action implementation	Year that the policy/action will be fully implemented	Annual CO ₂ saving once fully implemented (tCO ₂ e)	Latest Year measured	Saving in latest year measured (tCO ₂ e)	Status	Metric/Indicators for monitoring progress	Delivery Role	During project/policy design and implementation, has ISM or an equivalent behaviour change tool been used?	Please give further details of this behaviour change activity.	Value of Investment (£)	Ongoing Costs (£/year)	Primary Funding Source for Implementation of Policy/Action	Comments
Please select from drop down box	Please select from drop down box	Please select from drop down box		Please select from drop down box		Please select from drop down box		Please select from drop down box	Please select from drop down box				Please select from drop down box	

Please provide any detail on data sources or limitations relating to the information provided in Table 3

Q41 Partnership Working, Communications and Capacity Building

Please detail your Climate Change Partnership, Communication or Capacity Building Initiatives below.

Key Action Type	Description	Organisation's project role	Local Organisation (if not reporting organisation)	Private Partners	Public Partners	3rd Sector Partners	Outputs	Comments
Partnership Working	Renfrewshire Community Planning Partnership	Participant	Renfrewshire Council		Police Scotland, Scottish Fire and Rescue, University of the West of Scotland, West College Scotland, Skills Development Scotland etc.	Engage Renfrewshire	Local Outcome Improvement Plan and Thematic Plans	
Communications	Align with parent organisation communication strategies	Supporting	Renfrewshire Council			Engage Renfrewshire		

Other Notable Reportable Activity

Q51 Please detail key actions relating to Food and Drink, Biodiversity, Water, Procurement and Resource Use in the table below

Key Action Type	Key Action Description	Organisation's Project Role	Impacts	Comments
Please select from drop down box		Please select from drop down box		

Q52 Please use the text box below to detail further climate change related activity that is not noted elsewhere within this reporting template