

**To: Education and Children's Services Policy Board**

**On: 22 August 2019**

---

**Report by: Director of Children's Services**

---

**Heading: Proposal to consult on a catchment review affecting Inchinnan Primary School and Rashielea Primary School.**

---

## **1. Summary**

- 1.1 In May 2019 the education and children's services policy board approved the report "Developing the School Estate Management Plan (SEMP 2020)" which included a proposal to undertake a statutory consultation on a catchment review affecting Inchinnan and Rashielea Primary Schools.
- 1.2 In accordance with the Schools (Consultation) (Scotland) Act 2010 (referred to as the "2010 Act"), this report seeks approval to consult on the proposal to revise catchment arrangements affecting Inchinnan Primary School and Rashielea Primary School.
- 1.3 The "procedures for consultation" document is attached to this report as Appendix 1. This document advises elected members of the arrangements required to take the proposal forward as a formal consultation as outlined in the 2010 Act.
- 1.4 The consultation document "The revision of catchment areas affecting Inchinnan and Rashielea Primary Schools" is attached to this report as Appendix 2. This document describes the procedures to be followed to ensure full compliance with the 2010 Act including: the consultation arrangements required; the rationale for the review; the educational benefits of the proposal; the involvement of Education Scotland in the process; the format of the consultation report; and an activity timeline.

- 1.5 Subject to board approval of the proposal to consult, and a positive outcome from the consultation, the revised catchment areas could take effect from April 2020.
- 1.6 Whilst currently there are no completed house builds within the development, if in the future there are occupied houses before any proposal is concluded then all pupils living in affected addresses would be entitled to continue attending Inchinnan Primary school and if they are entitled to free school transport, in line with the Council's transport policy, then this entitlement would also continue.

Siblings of those pupils attending Primary school would be entitled to attend the school with their sibling as long as their sibling is registered in the school when they enrol.

Free school transport for new primary 1 pupils would only be provided in instances where the pupil enrolls in the school at a time when their sibling still attends the school and where that sibling is entitled to free school transport.

---

## **2. Recommendations**

- 2.1 The education and children's services policy board is asked to:
- approve the consultation procedures, noted in Appendix 1, relating to the proposal to revise catchment arrangements affecting Inchinnan and Rashielea Primary Schools;
  - approve the consultation document, "The revision of catchment areas affecting Inchinnan and Rashielea Primary Schools" attached as Appendix 2; and
  - agree that a report on the outcome of the consultation be submitted to the education and children's services policy board in March 2020.

---

## **3. Background**

- 3.1. In the report "Developing the School Estate Management Plan (SEMP 2020)" it was noted that a new housing development is under construction within the catchment area of Inchinnan Primary School and that this development is adjacent to an existing development which is zoned to Rashielea Primary School. There are currently no house builds completed, therefore there are no pupils currently affected.
- 3.2. Assessment of planning data has been undertaken and this exercise has identified that the new housing development could generate approximately 49 additional pupils over a 6 year period.

- 3.3. The undernoted table demonstrates that there is no detrimental impact to either school as a result of this catchment review however, it also shows that the increased number of pupils is more comfortably accommodated within Rashielea Primary School.

<b>Inchinnan Primary School</b>	<b>2019</b>	<b>2020</b>	<b>2021</b>	<b>2022</b>	<b>2023</b>	<b>2024</b>
Projected roll with new development	147	162	173	181	188	183
Percentage occupancy level	68%	75%	80%	83%	87%	84%

<b>Rashielea Primary School</b>	<b>2019</b>	<b>2020</b>	<b>2021</b>	<b>2022</b>	<b>2023</b>	<b>2024</b>
Projected roll with new development	288	272	266	263	267	279
Percentage occupancy level	66%	63%	61%	61%	62%	64%

- 3.4. As there is sufficient accommodation within Rashielea Primary School to accommodate the number of pupils generated from this new housing development and pupils living in the existing Rashielea Primary School area, it is recommended that the boundary anomaly be addressed through a formal consultation to revise catchment arrangements affecting Inchinnan Primary School and Rashielea Primary School.
- 3.5. Provision for denominational primary pupils will remain as is, within St Anne's Primary School catchment. There is also no change to secondary provision these will remain as Parkmains High School and Trinity High School.
- 

#### **4. Formal Consultation**

- 4.1. The Schools (Consultation) (Scotland) Act 2010 ("the 2010 Act") makes provision for the consultation process that is to apply regarding various proposals made by Councils for schools.
- 4.2. The principal purpose of the 2010 Act is to provide strong, accountable statutory consultation practices and procedures that local authorities must apply to their handling of all proposals for school closures and other major changes to schools.
- 4.3. These consultation processes are expected to be robust, open, transparent and fair, and seen to be so. They are also expected to be consistent across Scotland. The 2010 Act applies to a wide range of changes to the school estate, referred to as "relevant proposals".
- 4.4. This report seeks approval to consult on the proposal to revise catchment arrangements affecting Inchinnan and Rashielea Primary Schools. In accordance with Section 2 and Schedule 1, Para. 4 of the 2010 Act a proposal to vary any admission arrangements for a school, including a proposal to alter or establish the catchment area of a school, is a relevant proposal for the purposes of the 2010 Act. This proposal is therefore a relevant proposal for the purposes of the 2010 Act.

- 4.5. The “procedures for consultation” document is attached to this report as Appendix 1. This document advises elected members of the arrangements required to take the proposal forward as a formal consultation as outlined in the 2010 Act.
- 4.6. The consultation document “The revision of catchment areas affecting Inchinnan and Rashielea Primary Schools” is attached to this report as Appendix 2. This document describes the procedures to be followed to ensure full compliance with the 2010 Act including: the consultation arrangements required; the rationale for the review; the educational benefits of the proposal; the involvement of Education Scotland in the process; the format of the consultation report; and an activity timeline.
- 4.7. Subject to board approval of the proposal to consult, and a positive outcome from the consultation, the revised catchment areas could take effect from April 2020.
- 4.8. If approved then all pupils living in affected addresses would be entitled to continue attending Inchinnan Primary school and if they are entitled to free school transport, in line with the Council’s transport policy, then this entitlement would also continue.

Siblings of those pupils attending Primary school would be entitled to attend the school with their sibling as long as their sibling is registered in the school when they enrol.

Free school transport for new primary 1 pupils would only be provided in instances where the pupil enrolls in the school at a time when their sibling still attends the school and where that sibling is entitled to free school transport.

---

## Implications of the Report

### 1. Financial

If this catchment review is approved additional transport costs will accrue regardless of which school the development is zoned to. There is no safe walking route to Inchinnan Primary and the Council’s current policy provides transport to primary pupils residing more than 1 mile from their catchment school. Rashielea is more than 1 mile from the development.

Transport will be tendered in accordance with our procurement policies and costs may increase as the number of pupils increases per the table in 3.3.

### 2. HR & Organisational Development - None.

### 3. Community/Council Planning – None.

4. **Legal**  
This proposal adheres to the procedures required to take forward any proposal in terms of the Schools (consultation) (Scotland) Act 2010 amended through the enactment of the Children and Young People (Scotland) Act 2014.
5. **Property/Assets** - None.
6. **Information Technology** - None.
7. **Equality & Human Rights –**  
The Recommendations contained within this report have been assessed in relation to their impact on equalities and human rights. No negative impacts on equality groups or potential for infringement of individuals' human rights have been identified arising from the recommendations contained in the report. If required following implementation, the actual impact of the recommendations and the mitigating actions will be reviewed and monitored, and the results of the assessment will be published on the Council's website.
8. **Health & Safety** - None.
9. **Procurement** – None.
10. **Risk** - None.
11. **Privacy Impact** - None.
12. **Cosla Policy Position** – None.
13. **Climate Risk** - None.

---

#### **List of Background Papers**

- (a) "Developing the School Estate Management Plan (SEMP 2020)" – Education and Children's Services Policy Board, May 2019

The foregoing background paper will be retained within Children's Services for inspection by the public for the prescribed period of four years from the date of the meeting. The contact officer within the service is Ian Thomson, education manager. 0141 618 7241. email:ian.thomson@renfrewshire.gov.uk

---

IT/GMcK  
13 August 2019

**Author:** Ian Thomson, Education Manager 0141 618 7241,  
email:ian.thomson@renfrewshire.gov.uk

**PROCEDURES FOR CONSULTATION RELATING TO:**

**Proposal to consult on: Catchment review affecting Inchinnan Primary School and Rashielea Primary School**

**1. Summary**

- 1.1 This report lays out the consultation procedures required to take forward the proposal as outlined above in terms of the Schools (Consultation) (Scotland) Act 2010, amended through the enactment of the Children and Young People (Scotland) Act 2014.

**2. Procedures**

- 2.1 The procedures for consultation relating to this proposal are:

- 2.1.1 A consultation document will be prepared outlining the background to the proposal to revise catchment arrangements between Inchinnan Primary School and Rashielea Primary School.

- 2.1.2 Copies of the document will be issued simultaneously to:

- the parent council or combined parent council of any affected schools;
- the parents of the pupils at any affected school;
- the parents of any children expected by the education authority to attend any affected school within 2 years of the date of publication of the proposal paper;
- the pupils at any affected school (in so far as the education authority considers them to be of a suitable age and maturity);
- the staff (teaching and other) at any affected school;
- any trade union which appears to the education authority to be representative of the staff (teaching and other) at any affected school;
- the community council (if any);
- the community planning partnership for the area of the local authority in which any affected school is situated and any other community planning partnership that the education authority considers relevant;
- any other education authority that the education authority considers relevant; and
- any other community groups using any of the affected schools.

2.2 It is proposed that:

- an advertisement will be prepared notifying the public and inviting written comment from individuals or organisations outlining the proposal and the recommendations and stating that full details can be obtained from establishments affected;
- the report will be available for inspection at all reasonable times and without charge at Renfrewshire House and on the Council website and at all affected schools and all public libraries;
- the consultation should commence on 2 September 2019 and it will run until 4 November 2019;
- a public meeting will be held at Rashielea Primary School on 11 September 2019 to allow the proposal to be discussed and oral representations to be considered; and
- written representation should be made to The Director of Children's Services, Renfrewshire Council, Renfrewshire House, Cotton Street, Paisley, PA1 1LE or to [inchinnanreview@renfrewshire.gov.uk](mailto:inchinnanreview@renfrewshire.gov.uk), no later than noon on 4 November 2019.

2.3 Copies of the proposal report and all written representations and comments received will be forwarded to Education Scotland who will consider the papers and prepare a report which will be sent to the education authority.

2.4 A consultation response report including a summary of all written submissions from all bodies and the report from Education Scotland will then be published by children's services in advance of any Council decision. The report will include a statement of the authority's responses to any issues raised by representations received or by the report from Education Scotland. The consultation response report will be available for inspection at all reasonable times and without charge at Renfrewshire House and on the Council website and at all affected schools and all public libraries.

2.5 Interested parties have three weeks time for further consideration from the date of publication of the consultation report.

2.6 The Schools (Consultation) (Scotland) Act 2010, amended through the enactment of the Children and Young People (Scotland) Act 2014 does not require referral to Scottish ministers in cases other than closure of schools.

2.7 The final recommendation considering the results of the consultative process will be presented to a meeting of the education and children's services policy board in March 2020.

## **THIS IS A CONSULTATION DOCUMENT**

### **Proposals relating to:**

#### **The revision of catchment areas affecting Inchinnan and Rashielea Primary Schools**

#### **1. Introduction**

- 1.1 The Schools (Consultation) (Scotland) Act 2010 (“the 2010 Act”) makes provision for the consultation process that is to apply re: various proposals made by Councils for schools. The principal purpose of the 2010 Act is to provide strong, accountable statutory consultation practices and procedures that local authorities must apply to their handling of all proposals for school closures and other major changes to schools. These consultation processes are expected to be robust, open, transparent and fair, and seen to be so. They are also expected to be consistent across Scotland. The 2010 Act applies to a wide range of changes to the school estate, referred to as “relevant proposals”.
- 1.2 This report seeks approval to consult on the proposal to revise catchment arrangements affecting Inchinnan and Rashielea Primary Schools. In accordance with Section 2 and Schedule 1, Para. 4 of the 2010 Act, a proposal to vary any admission arrangements for a school, including a proposal to alter or establish the catchment area of a school, is a relevant proposal for the purposes of the 2010 Act. This proposal is therefore a relevant proposal for the purposes of the 2010 Act.
- 1.3 This is the proposal paper, produced by the Council in accordance with the terms of Sections 1 and 4 of the 2010 Act. This proposal paper must:
  - a) set out the details of the relevant proposal;
  - b) propose a date for implementation of the proposal;
  - c) contain the educational benefits statement in respect of the proposal;
  - d) refer to such evidence or other information in support of (or otherwise relevant in relation to) the proposal as the Council considers appropriate; and
  - e) give a summary of the process provided for in the 2010 Act.

The Council must do the following:

- a) publish this proposal paper in electronic and printed form;
- b) make the paper, and (so far as practicable) a copy of any separate documentation that it refers to, available for inspection at all reasonable times and without charge:



- (i) at its head office and on its website; and
  - (ii) at any affected school or at a public library or some other suitable place within the vicinity of the school.
- c) provide without charge the information contained in this proposal paper:
- (i) to such persons as may reasonably require that information in another form; and
  - (ii) in such other form as may reasonably be requested by such persons.
- d) advertise the publication of the proposal paper by such means as it considers appropriate.
- 

## **2. Correction of the proposal paper**

2.1 Where, during the consultation period, the Council has been notified of an alleged omission of relevant information from a proposal paper or an alleged inaccuracy in a proposal paper the Council must proceed as follows:

- a) determine if relevant information has (in its opinion) been omitted and whether there is (in fact) an inaccuracy;
- b) inform the notifier of its determination under paragraph (a), and the reasons for that determination;
- c) inform the notifier as to the action (if any) it is taking and of the reasons why it is, or is not, taking such action; and
- d) invite the notifier to make representations to the Council if the notifier disagrees with the Council's determination under paragraph (a) or its decision as to whether to take action.

2.2 Where the notifier makes further representation under paragraph 2(d) above, the Council may make a fresh determination as to whether relevant information has been omitted or there is (in fact) an inaccuracy and the Council may make a fresh decision as to whether to take action. The Council must inform the notifier if it makes a fresh determination referred to above, or if it makes a fresh decision as to whether to take action.

2.3 Where, having been notified by another person as described above, the Council determines that:

- a) relevant information has been omitted from the proposal paper, or
- b) there is (in fact) an inaccuracy in the proposal paper; and
- c) where the Council discovers, during the consultation period that relevant information has been omitted from a proposal paper or discovers an inaccuracy in a proposal paper, the Council must proceed as follows:

- 2.4 Where the information that has been omitted or the inaccuracy relates to a material consideration relevant to the Council's decision as to implementation of the proposal, it must:
- (i) publish a corrected proposal paper,
  - (ii) give revised notice in accordance with the 2010 Act and
  - (iii) send a copy of the corrected paper to Education Scotland, or
  - (iv) issue a notice to the relevant consultees and Education Scotland providing the omitted information or, as the case may be, correcting the inaccuracy, and, if the Council considers it appropriate, extending the consultation period by such period as is reasonable by reference to the significance of the information provided or, as the case may be, the nature of the correction.
- 2.5 Where the information that has been omitted or the inaccuracy does not relate to a material consideration, the Council may, but is not obliged to, take steps (i)-(iii) or (iv) described above, and may also take no further action, except to report the inaccuracy/omission as required by the 2010 Act in the consultation report, which is referred to in more detail below.
- 2.6 Where, after the end of the consultation period, the Council issues a notice to the relevant consultees and Education Scotland providing the omitted information or correcting the inaccuracy, that notice may, instead of extending the consultation period, specify such further period during which representations may be made on the proposal as is reasonable by reference to the significance of the information provided or, as the case may be, the nature of the correction. Any such further period is to be treated as part of the consultation period for the purposes of the 2010 Act.
- 

### **3. Consultation arrangements**

- 3.1 As confirmed above, the present proposal is a relevant proposal for the purposes of the 2010 Act, and therefore the Council will adhere to the consultation process in the 2010 Act.
- 3.2 This consultation document provides background information to the catchment review. It details the proposal and indicates a timeframe for implementation should the proposal be approved.
- 3.3 This consultation document also includes the Council's Educational Benefits Statement.
- 

### **4. Rationale for catchment review**

- 4.1 New housing is currently under development within the catchment area of Inchinnan Primary School. However, this development is adjacent to an existing development which is zoned to Rashielea Primary School. There are currently no house builds completed.

- 4.2 Both developments are located in the general vicinity of Florish Road with the existing development to the North of the road and the new development to the South.
- 4.3 As the catchment boundary line between the two schools runs along this road a catchment review is required to rezone the new housing development from Inchinnan Primary School to Rashielea Primary School; thereby zoning all non-denominational primary school pupils in this area to Rashielea Primary School.
- 4.4 It is anticipated that the new housing development could generate approximately 49 additional pupils over a 6 year period. The undernoted table demonstrates that there is no detrimental impact to either school as a result of this catchment review, However, it also shows that the increased number of pupils is more comfortably accommodated within Rashielea Primary School.

<b>Inchinnan Primary School</b>	<b>2019</b>	<b>2020</b>	<b>2021</b>	<b>2022</b>	<b>2023</b>	<b>2024</b>
Projected roll with new development	147	162	173	181	188	183
Percentage occupancy level	68%	75%	80%	83%	87%	84%

<b>Rashielea Primary School</b>	<b>2019</b>	<b>2020</b>	<b>2021</b>	<b>2022</b>	<b>2023</b>	<b>2024</b>
Projected roll with new development	288	272	266	263	267	279
Percentage occupancy level	66%	63%	61%	61%	62%	64%

- 4.5 As there is sufficient accommodation within Rashielea Primary School to accommodate the number of pupils generated from this new housing development and pupils living in the existing Rashielea Primary School area, it is recommended that the boundary anomaly be addressed through a formal consultation to revise catchment arrangements affecting Inchinnan Primary School and Rashielea Primary School.
- 4.6 If approved, this catchment alteration would be implemented in April 2020.
- 4.7 Provision for denominational primary pupils will remain as is, within St Anne's Primary School catchment. There is also no change to secondary provision these will remain as Parkmains High School and Trinity High School.

## **5. Educational benefits statement**

- 5.1 Under the 2010 Act the Council must prepare an educational benefits statement (EBS) in accordance with Sections 1 and 3 of the 2010 Act.
- 5.2 The EBS must include the following:
- a) the Council's assessment of the likely educational effects of a relevant proposal (if implemented) on:
    - (i) the pupils of any affected school;
    - (ii) any other users of the school's facilities;

- (iii) any children who would (in the future but for implementation) be likely to become pupils of the school; or
  - (iv) the pupils of any other schools in the Council's area,
- b) the Council's assessment of any other likely effects of the proposal (if implemented),
- c) an explanation of how the Council intends to minimise or avoid any adverse educational effects that may arise from the proposal (if implemented),
- d) a description of the educational benefits which the Council believes will result from implementation of the proposal (with reference to the persons whom it believes will derive them), as well as the Council's reasons for coming to those beliefs.

### 5.3 The following paragraphs detail the Council's Educational Benefits Statement:

5.3.1 There are currently no house builds completed, therefore there are no pupils currently affected. If however, at a later date any pupils are affected by this catchment review they would be entitled to continue attending the schools they are currently in. However, Children's Services would provide transition support to any pupils opting to change school as a result of this proposal.

5.3.2 Pupils living in affected addresses would be entitled to continue attending Inchinnan Primary school and if they are entitled to free school transport, in line with the Council's transport policy, then this entitlement would also continue.

Siblings of those pupils attending Primary school would be entitled to attend the school with their sibling as long as their sibling is registered in the school when they enrol.

Free school transport for new primary 1 pupils would only be provided in instances where the pupil enrolls in the school at a time when their sibling still attends the school and where that sibling is entitled to free school transport.

5.3.3 Renfrewshire Council's quality improvement framework supports all schools to improve and develop. Inchinnan Primary School and Rashielea Primary School produce annual standards and quality reports which demonstrate progress towards their agreed educational objectives through the efficient and prudent use of resources. Both schools have well developed self-evaluation and school improvement planning procedures which are informed by the whole school community and reviewed through the Council's quality improvement visits which are aligned to the quality indicators identified in How Good is Our School 4 (HGIOS4).

5.3.4 This catchment review addresses a geographical anomaly which will allow all non-denominational pupils living in this new housing development the opportunity to attend the same non-denominational school as neighbouring developments.

- 5.3.5 In respect of accommodation, there is no detrimental impact to either school as a result of this catchment review. However, it is evident that the increased number of pupils is more comfortably accommodated within Rashielea Primary School.
- 5.3.6 Both schools deliver the full breadth of the curriculum. They provide spaces for teacher directed learning; breakout areas for independent or small group learning; and they facilitate the range of learning experiences necessary for the development of skills. This proposal will assist with effective class organisation models to support learning and teaching.
- 5.3.7 Both schools have sufficient playground and social gathering areas which provide for different kinds of play and easy access to outdoor learning opportunities. Garden areas are also provided to enhance pupil participation in outdoor education; further supporting learning about the natural environment.
- 5.3.8 Both schools are bright, naturally ventilated environments. They provide active and energetic learning opportunities which enhance the wellbeing of all users. Nurture and quiet spaces are also provided to support the emotional wellbeing of pupils with additional support needs in both schools.
- 5.3.9 Both schools have sufficient dining and PE facilities which are designed to meet the needs of the school community and both buildings are compliant with the provisions of the Equality Act (2010).

5.4 Our assessment of any other likely effects of the proposal (if implemented).

As is the case in any consultation of this scale, there may be those who perceive their situation to be affected positively, those who perceive the changes as negatively affecting their situation, and those for whom no perceived change is anticipated.

For example, a child who currently attends Inchinnan primary school who has siblings who may wish to attend this school in the future may have concerns; if the proposal goes ahead and they are deemed to now be living in the Rashielea catchment area. These families would neither be advantaged nor disadvantaged as provision is being made for them to attend, so long as siblings are in attendance at the time of enrolment.

5.5 How we would intend to minimise or avoid any adverse effects that may arise from the proposal (if implemented).

A right for siblings of those affected by the change has been included. That is, a child who attends Inchinnan primary school currently and has a sibling who wishes to attend in the future are being afforded provision to do so; should the proposal be agreed.

5.6 The benefits, which we believe, would result from implementation of this proposal.

In addition to the benefits noted in 5.3.1 – 5.3.9 above, Children's Services believe that reviewing catchment areas would enable the Council to plan more effectively and robustly as the challenge of rising rolls within the authority continues to emerge.

---

## **6. Impact on schools and their communities**

- 6.1 Catchment review forms part of the Council's School Estate Management Planning process and equality impact assessment is central to this approach.
  - 6.2 The recommendations contained within this report will be assessed in relation to their potential impact on equalities and human rights as part of the consultative process.
  - 6.3 There is no impact on community council boundaries.
  - 6.4 Both schools will have capacity to serve their communities.
- 

## **7. Involvement of Education Scotland**

- 7.1 A copy of this proposal has been sent to Education Scotland.
  - 7.2 At the end of the formal consultation period Children's Services will send Education Scotland the following:
    - a) a copy of all relevant written representations that are received from any person during the consultation period;
    - b) a summary of any oral representations made by any person during the public meeting; and
    - c) a copy of any other relevant documentation, as available and so far, as practicable.
  - 7.3 Education Scotland will provide the Council with a report on the educational aspects of this proposal. This report will be submitted to the Council no later than 3 weeks after Children's Services have sent them all of the representations and documents noted above, or such longer period as the Council may agree with Education Scotland.
  - 7.4 In preparing their report, Education Scotland may visit establishments affected by the proposal and may make reasonable enquiries of such persons (both in the in the establishments and outwith) as they consider appropriate.
- 

## **8. Consultation report**

- 8.1 After receiving the report from Education Scotland, Children's Services will review the proposal having regard (in particular) to the following:

- a) written representations received by the Council from any person during the consultation period;
  - b) oral representations received by the Council from any person at the public meeting; and
  - c) the report provided by Education Scotland.
- 8.2 Thereafter the service will prepare a consultation report for consideration by the education and children's services policy board.
- 8.3 The consultation report will contain the following:
- a) a record of the total number of any written representations made to the Council (by any person) on the proposal during the consultation period;
  - b) a summary of:
    - (i) those written representations; and
    - (ii) any oral representations made to it (by any person) at the public meeting.
  - c) a statement of the Council's response to:
    - (i) those written and oral representations; and
    - (ii) Education Scotland's report.
  - d) a copy of that report
  - e) a statement explaining how the Council complied with its obligation to review the relevant proposal as described above.
- 8.4 The consultation report will also include the following:
- a) details of any omission/inaccuracy in the proposal paper, or (as the case may be) any alleged omission/inaccuracy, (including a statement of the Council's opinion on it);
  - b) a statement of the action taken in respect of the omission or inaccuracy, or (as the case may be) the alleged omission/inaccuracy, or, if no action has been taken, of that fact (and why); and
  - c) any representations made to the Council where the person who made the notification re: omission/inaccuracy disagreed with the Council's determination as to whether there had been an omission/inaccuracy, or its decision as to whether to take action.
- 8.5 The Council must:
- a) publish the consultation report in both electronic and printed form;

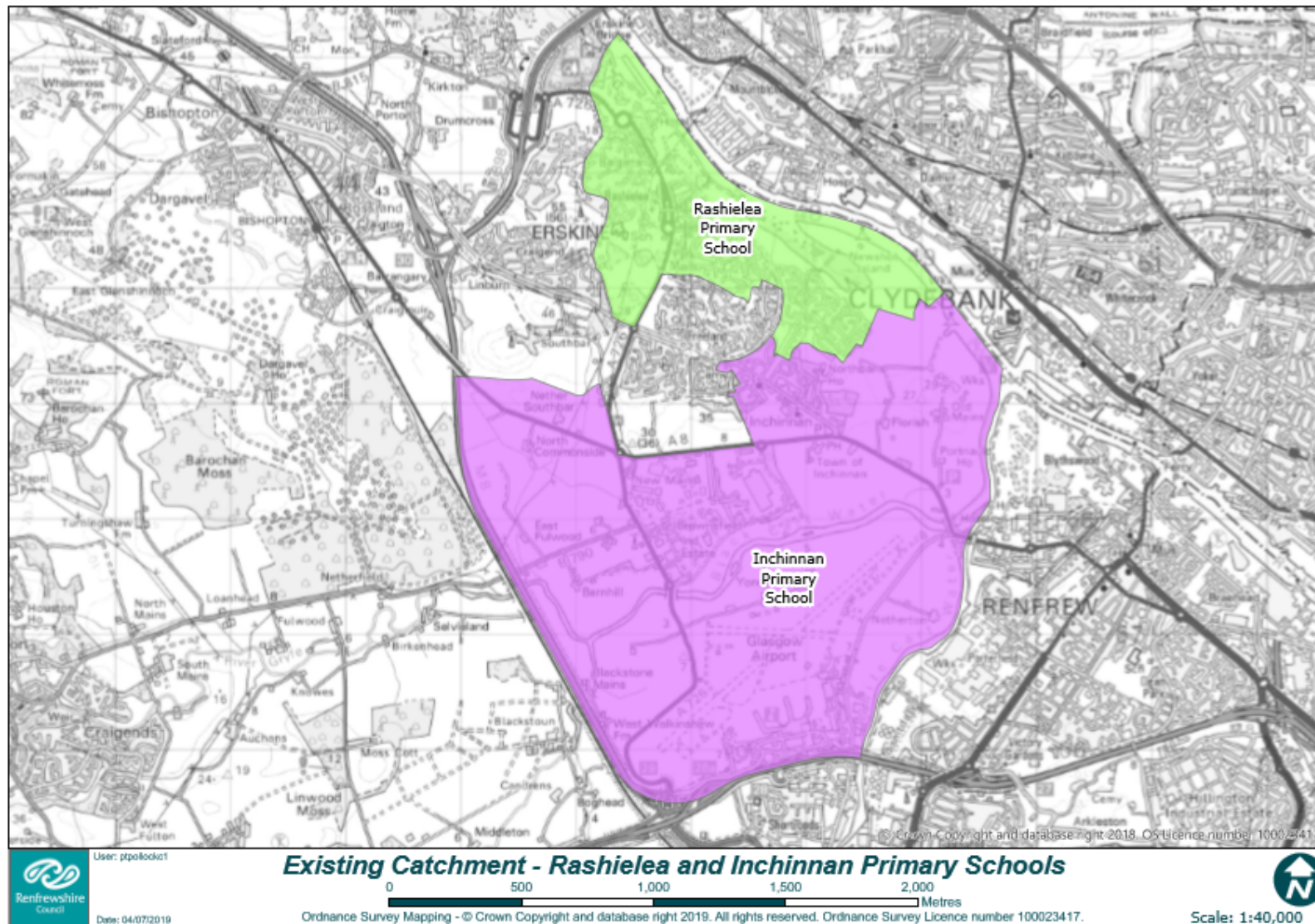
- b) make the report available for inspection at all reasonable times and without charge:
  - (i) at its head office and on its website; and
  - (ii) at any affected school or at a public library or some other suitable place within the vicinity of the school.
- c) provide without charge the information contained in the consultation report:
  - (i) to such persons as may reasonably require that information in another form; and
  - (ii) in such other form as may reasonably be requested by such persons.
- d) inform any person who during the consultation period made written representations on the relevant proposal of the publication of the consultation report; and
- e) advertise the publication of the consultation report by such means as it considers appropriate.

8.6 The time line and summary of the consultation process in respect of this proposal is set out below:

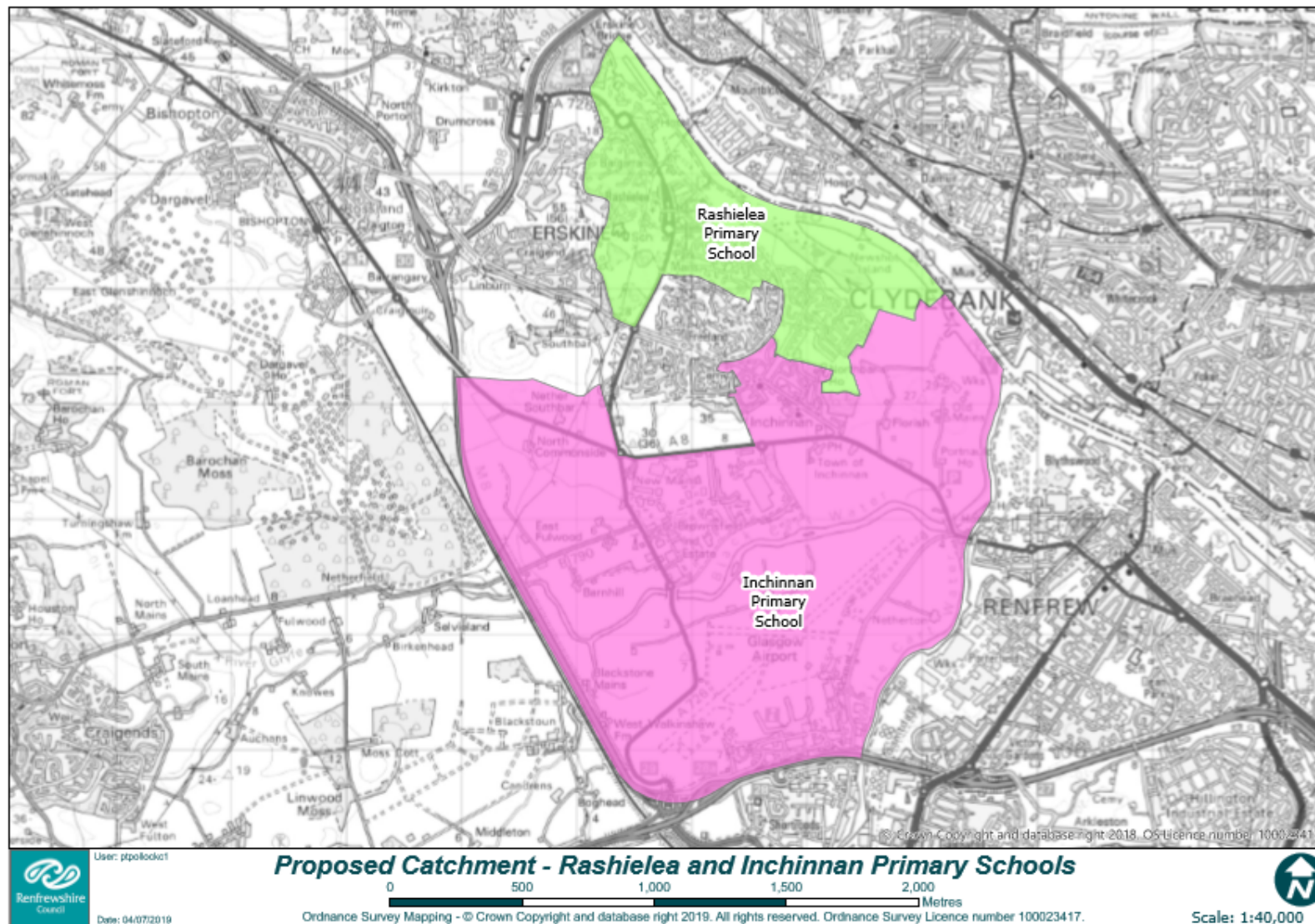


Activity	Date
Approval for consultation sought from Education and Children's Services policy board	22 August 2019
<p>Consultation document to be issued outlining the proposal to:</p> <ul style="list-style-type: none"> <li>the parent council or combined parent council of any affected schools;</li> <li>the parents of the pupils at any affected school;</li> <li>the parents of any children expected by the education authority to attend any affected school within 2 years of the date of publication of the proposal paper;</li> <li>the pupils at any affected school (in so far as the education authority considers them to be of a suitable age and maturity);</li> <li>the staff (teaching and other) at any affected school;</li> <li>any trade union which appears to the education authority to be representative of the staff (teaching and other) at any affected school;</li> <li>the community council (if any);</li> <li>the community planning partnership for the area of the local authority in which any affected school is situated and any other community planning partnership that the education authority considers relevant;</li> <li>any other education authority that the education authority considers relevant; and</li> <li>any other community groups using any of the affected schools.</li> </ul>	2 September 2019
Advert to advise of public consultation meeting and the commencement of the formal consultation period issued via local press.	2 September 2019
<ul style="list-style-type: none"> <li>Public consultation meeting held to consult with affected community in Rashielea Primary School at 7.00pm; and</li> <li>Questionnaire to go live on the Council website.</li> </ul>	11 September 2019
Public consultation period ends 6 weeks after the date of the public meeting. The total period excludes any school holidays or in-service days.	4 November 2019
Report to Education Scotland on outcome of consultation.	25 November 2019
Response from Education Scotland on outcome of consultation.	17 December 2019
Consultation response report (including Education Scotland response) presented to Education and Children's Services policy board meeting stating consultation outcomes and making final recommendation.	March 2020
Copy of proposal paper and consultation response report sent to Scottish Ministers within 6 days of education and children's services policy board approval.	March 2020

## Existing Catchment – Rashielea and Inchinnan Primary Schools



## Proposed Catchment – Rashielea and Inchinnan Primary Schools



**Catchment Review:**            **Streets Affected – Inchinnan Primary School with  
Rashielea Primary School**

**Addresses allocated at July 2019**

Berchanshaw
Cairnmaith
Inchbrae
Inchmeall
Pettcairn
Templar Crescent
Teucheen Circle

**Note: Construction has yet to commence at this development and more addresses may be added to this list, which fall within the boundary of this development.**