

Renfrew

Local Profile: Background Information



#ourRenfrewshire

 Renfrewshire
Community Planning
Partnership

Population

How many people live here?

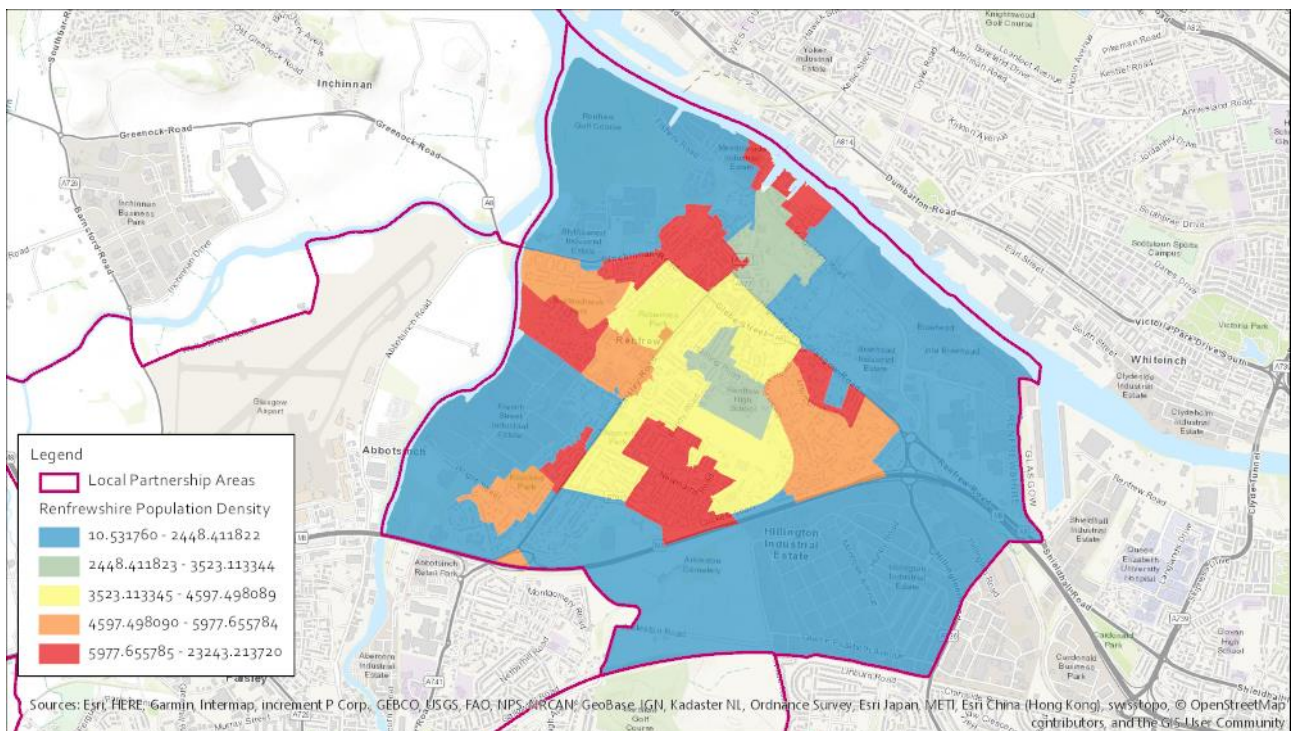
22,929 people in total live in the Renfrew area.

What age are people living here?

Renfrew East	14%	64%	22%
Renfrew North	16%	72%	12%
Renfrew South	15%	59%	26%
Renfrew West	20%	66%	15%
Overall	17%	65%	18%

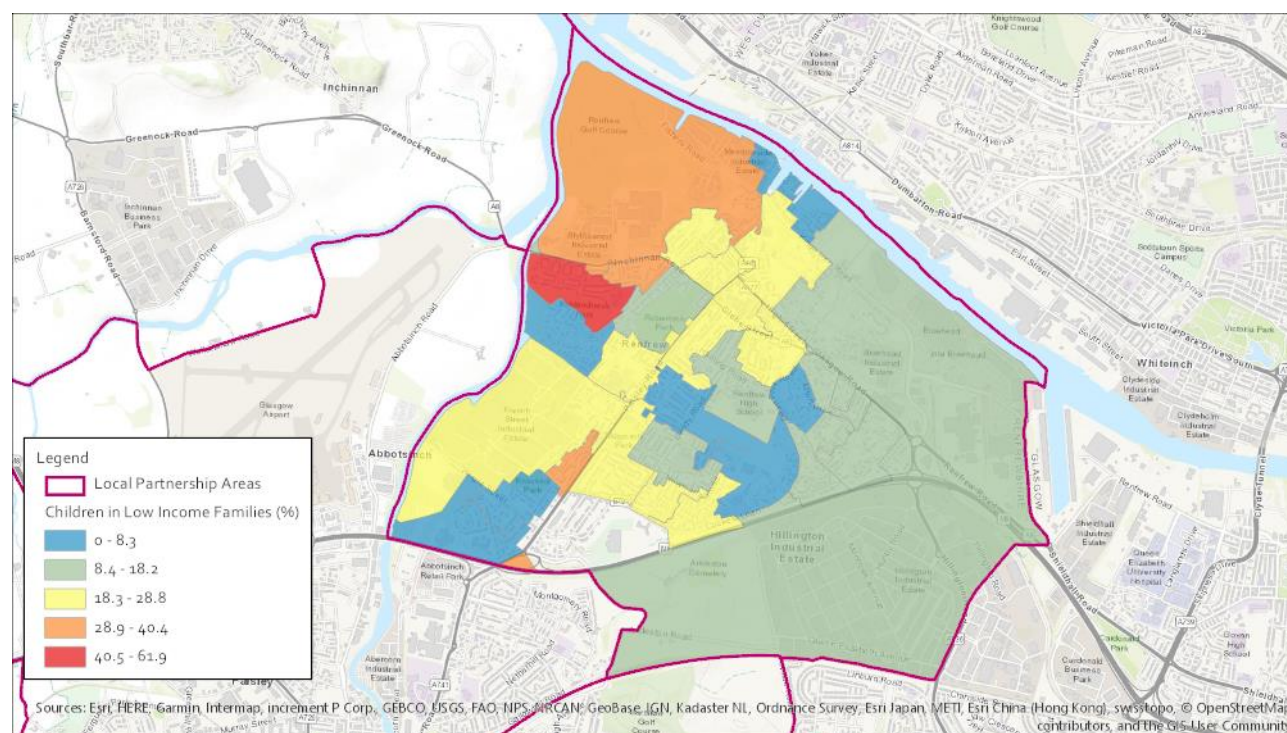
Please note figures may not add up to 100% because of rounding

Population Density



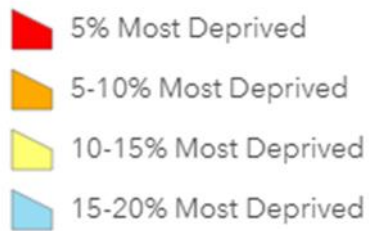
Children in Low Income Families

As recorded by the Scottish Index of Multiple Deprivation



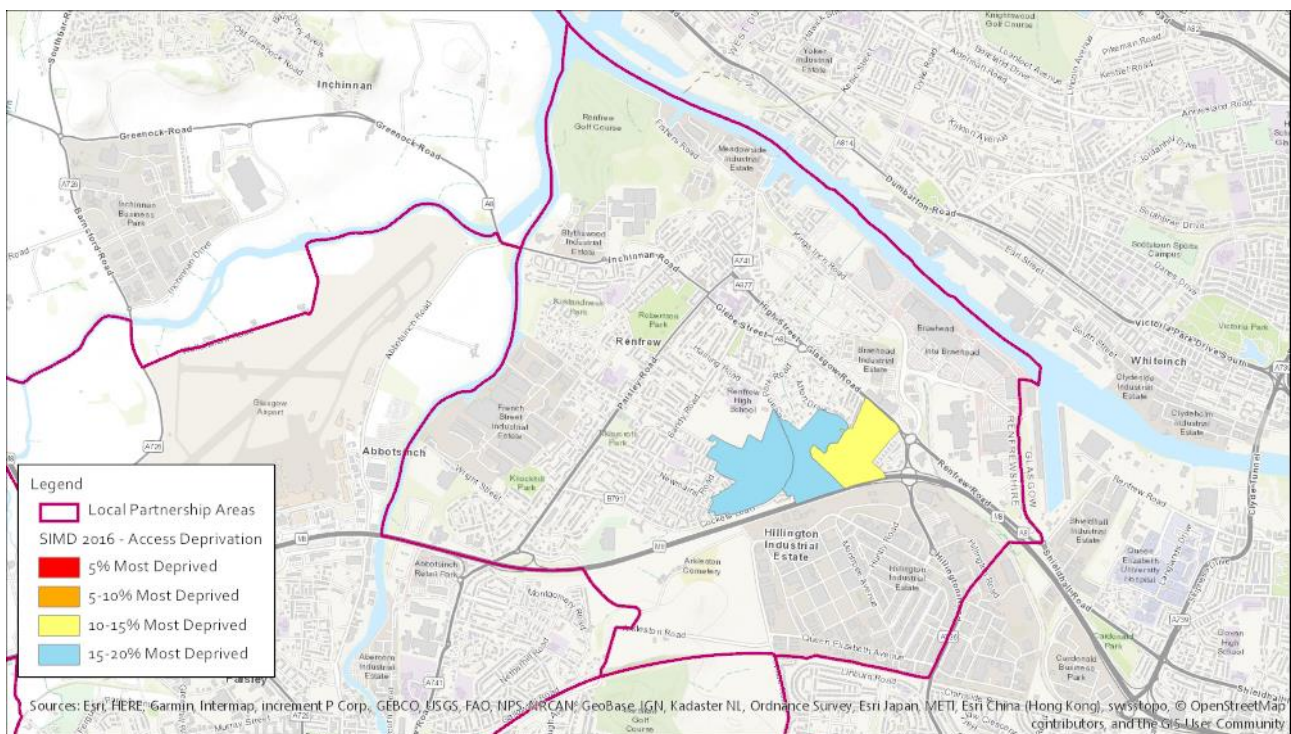
The tables below are also taken from the Scottish Index of Multiple Deprivation and show other dimensions of deprivation: access, health and crime. The key below applies to the following three tables.

SIMD 2016 - Access Deprivation



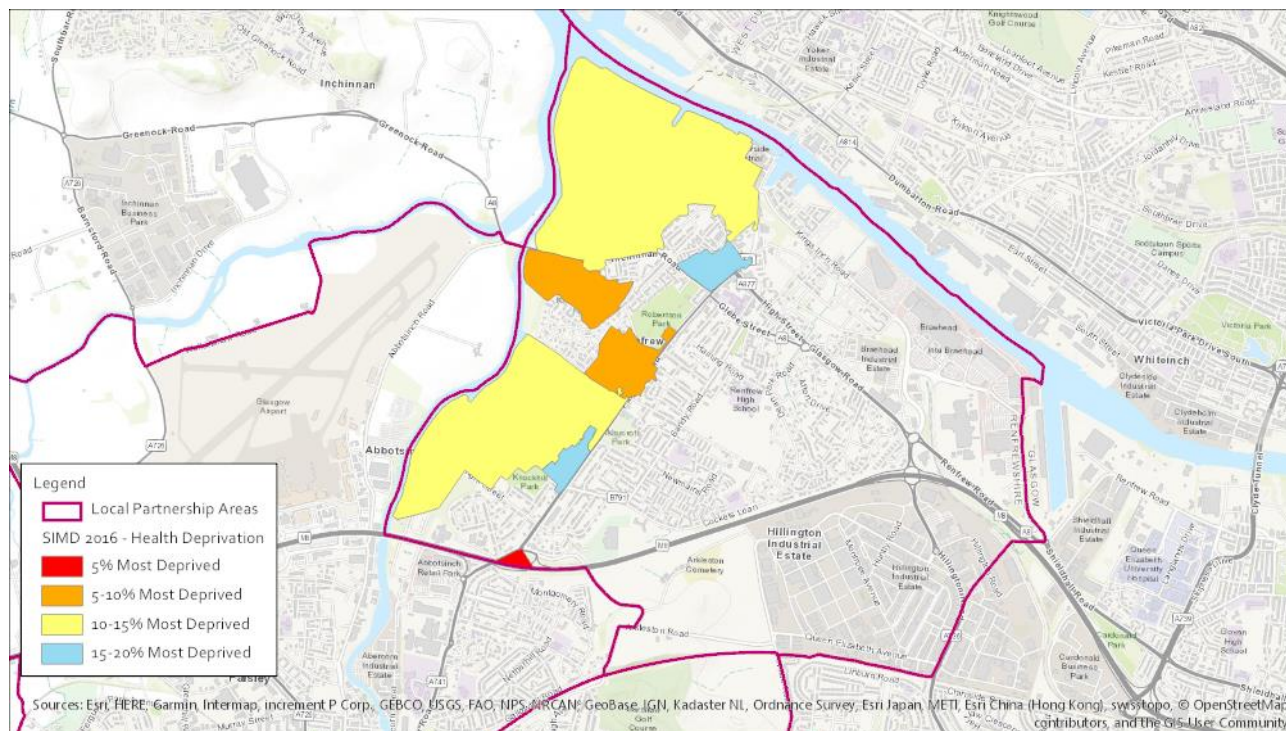
Access Deprivation

This measure includes drive time to GP, to retail centre, to petrol station, to primary and secondary schools, to post office and public transport time to GP, to retail centre, to post office.



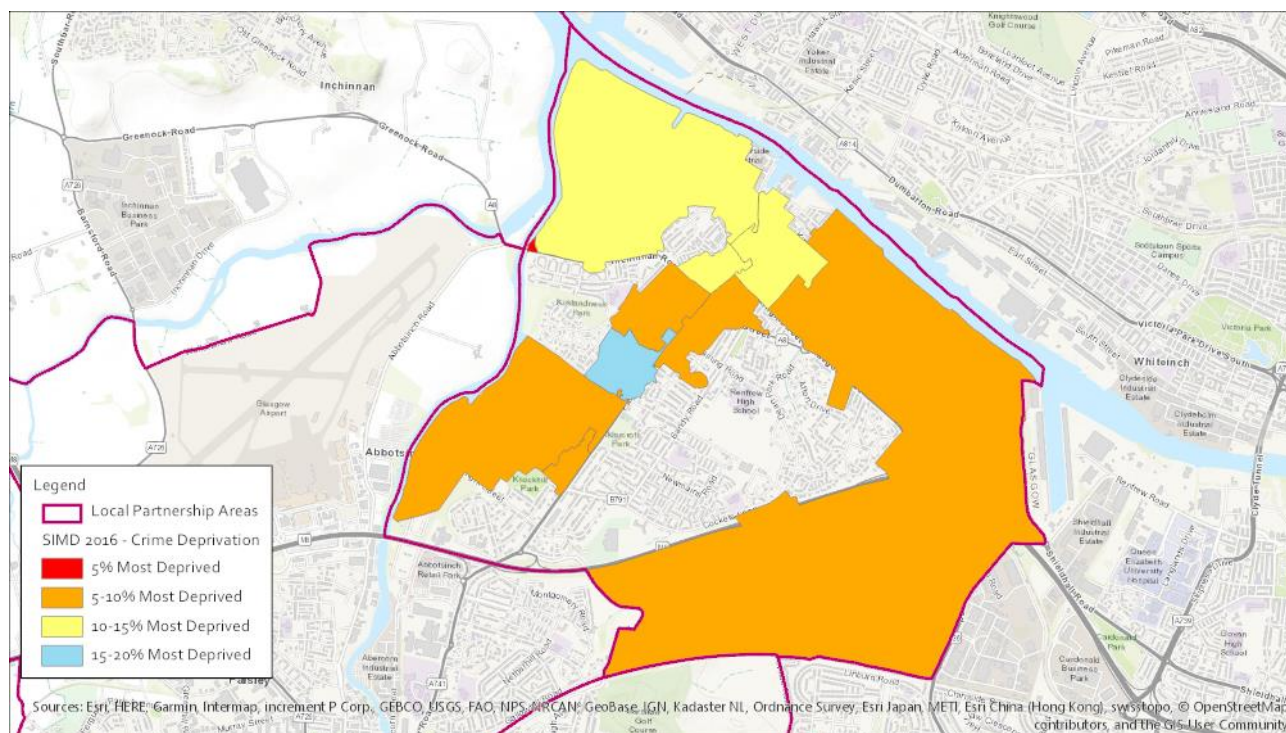
Health Deprivation

This measure includes the Standardised Mortality Ratio; Hospital stays related to alcohol misuse; Hospital stays related to drug misuse; Comparative Illness Factor; Emergency stays in hospital; Proportion of population being prescribed drugs for anxiety, depression or psychosis; and Proportion of live singleton births of low birth weight.



Crime Deprivation

This measure includes Domestic house breaking, Drug offences, Common assault, Crimes of violence, Vandalism and Sexual offences.



Place Standard, 2017

117 residents in Renfrew responded to the Our Renfrewshire, Place Standard Consultation. 73 (62%) of the respondents were female, 42 (38 %) were male, with most respondents of working age.

Open space came out top, as the term mentioned most when thinking about priorities for the area. The wordle below shows the terms that were most frequently mentioned in the largest text, when discussing priorities for the area.



Most positive responses

Respondents felt most strongly positive about the following themes:



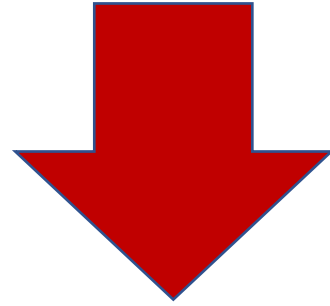
Play and recreation

Identity and belonging

Least positive responses

Respondents felt negative about the following themes:

Moving around
Public transport
Traffic and parking
Streets and spaces
Work and local economy
Care and maintenance
Influence and sense of control



Mixed responses

Most mixed responses were received about natural space; facilities and amenities; housing and community; social contact; and feeling safe

Children & Education

Education resources

Secondary School

Trinity High School (denominational)

Renfrew High School (no denominational)

Primary Schools

Kirklandneuk Primary School (non denominational)

St James' Primary School (denominational)

Newmains Primary School (non denominational)

Arkleston Primary School (non denominational)

Nurseries

Little Flowers Nursery (private and voluntary sector)

Moorpark Pre-Five Centre (local authority)

3 Bears Nursery (private and voluntary sector)

Cherrie Daycare Nursery (private and voluntary sector)

Glendee Pre-Five Centre (local authority)

Renfrew Day Nursery (private and voluntary sector)

Little Stars Hillington (private and voluntary sector)

Parks and greenspace

Playpark at Hamilton Crescent

Clyde View Park

Playpark at North Church

Playpark at Inchinnan Road

Playpark to South of No 43

Playpark at Charles Avenue

Kirklandneuk Park

Robertson Park

Alexandra Park

Playpark at Millburn Way

Playpark between Nos 8 and 10, Urquhart Crescent

Playpark at Birch Way and Maitland Place

Playparks at McCracken Avenue

Playpark at Victory Gardens

King George V Memorial Playing Fields
Playpark at Lomond Avenue
Knockhill Park
Cockleshill Park

Health Resources

Health Centres

Renfrew Health and Social Care Centre

Aranthrue Centre

Blythswood House (hospital)

GP Practices

Kingsinch Medical Practice

Aranthrue Centre

Pharmacies & Dentists

Phoenix Clinic

The Co-operative Pharmacy

Rowlands Pharmacy

Boots Pharmacy

Parkview Dental Surgery

Alliance Pharmacy

Boots Pharmacy

Dental Studio Renfrew

Care Homes, Extra Care & Sheltered Housing

Care homes are listed below:

Care Homes

Craigielea (85 units)

Renfrew Care Home (60 units)

Extra Care, Respite & Sheltered Housing

Orchard Court (15 units)

Fulbar Court (20 units)

Monkdyke House (33 units)

Muirpark Avenue (4 units)

Adult Health and Wellbeing across Renfrewshire

- 80% of people say their health is good or very good.
- 15% of people say they smoke, 10% drank alcohol at least twice per week.
- 7% of people feel isolated from family and friends.
- 46% say they have at least 5 portions of fruit and veg per day.
- 47% of people do 150 minutes of exercise per week.