

Glasgow & Clyde Valley City Deal

4 February 2015





Contents

- Overview of the City Deal Programme
- Governance Arrangements
- City Deal Infrastructure Projects
- Labour Market Projects



City Deal – Vision

“The Glasgow and Clyde Valley City Deal has the potential to deliver outstanding economic growth through job creation across this region”

Lord Haughey - Chair of the Clyde Valley
Economic Leadership Board



City Deal – Vision

“In bringing together the expertise and innovation of business, universities and other stakeholders we can really help ensure that the future continues to be one of economic and social development and regional success”

Professor Anton Muscatelli - Chair of the
Commission on Urban Economic Growth



City Deal – Key Components

- £1.13bn Infrastructure Fund – investment programme over 20 years
- £75million funding for Innovation and Growth – business creation in life sciences and support to grow young companies
- £25million funding for labour market programmes with a view to introducing new ways of working to assist specific groups suffering greater disadvantage in the labour market



City Deal - Impact

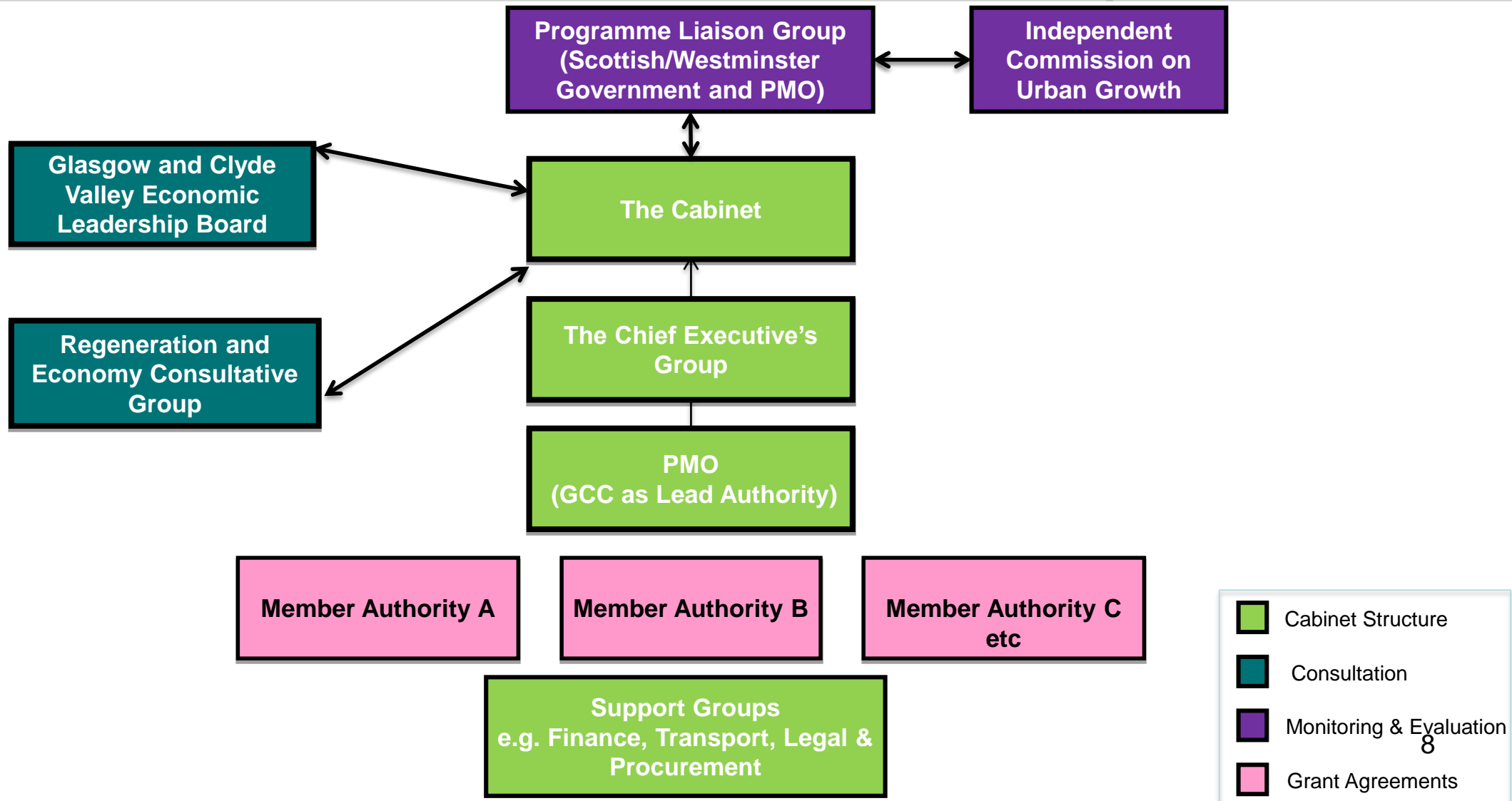
- permanent uplift in GVA to the City Region of £2.2billion per annum (4.4%)
- generate 15,000 construction jobs during the construction period
- 29,000 permanent additional jobs once construction is complete
- unlocks £3.3billion of private sector investment
- improved employment opportunity with average 45,000 accessible jobs in each Council area
- supporting innovation and labour market programmes ensure other sustained benefits



Governance Arrangements

- City Deal Governance Arrangements (Overall)
- Programme Management Office (PMO)
- Governance Arrangements (Renfrewshire)
- Assurance Framework (AF)

City Deal Governance





PMO & Central Arrangements

■ Cabinet

- Cabinet Agreement signed by all 8 Councils on 20 January 2015
- Meets Quarterly

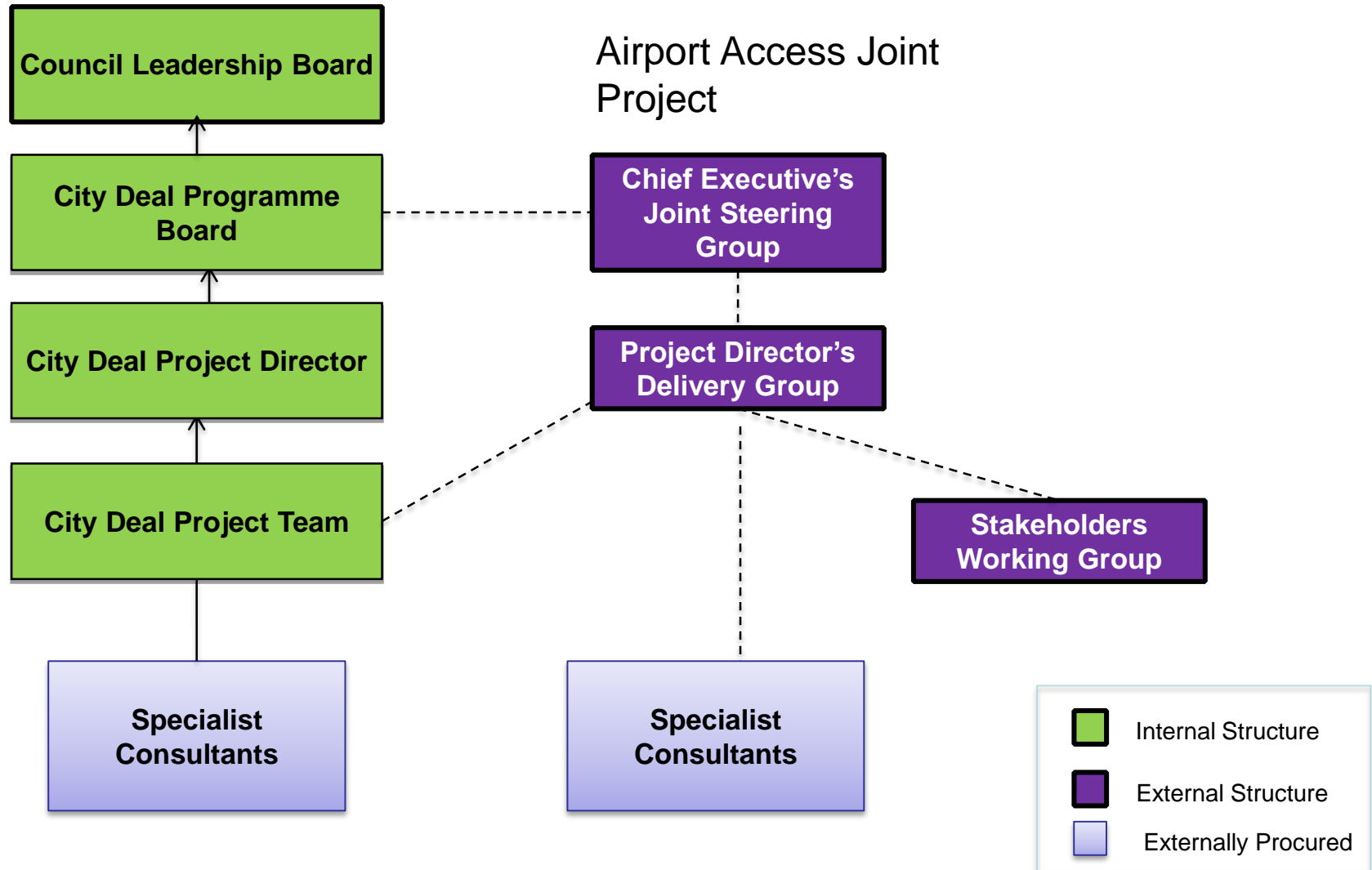
■ Chief Executives Group

- First meeting of CEG 4 February 2015
- Meets 4 weekly

■ Programme Management Office (PMO)

- Based in GCC
- Supports Cabinet and CEG
- Monitors and reports on progress of projects

Renfrewshire City Deal Governance





Assurance Framework (AF)

- AF Governs process for decision making and delivery of City Deal
- Approved by Cabinet on 17 March 2015
- Approved by UK & SG Ministers on 27 March 2015
- Goes “live” 1 April 2015
- Part 1 – Cabinet Governance Structure and Role of Groups
- Part 2 –Business Cases and Project and Programme Outputs
- Part 3 – Programme and Project Management Arrangements



- City Deal Infrastructure Projects



GCV Initial List of Infrastructure Projects

(Excl. Renfrewshire
Projects)

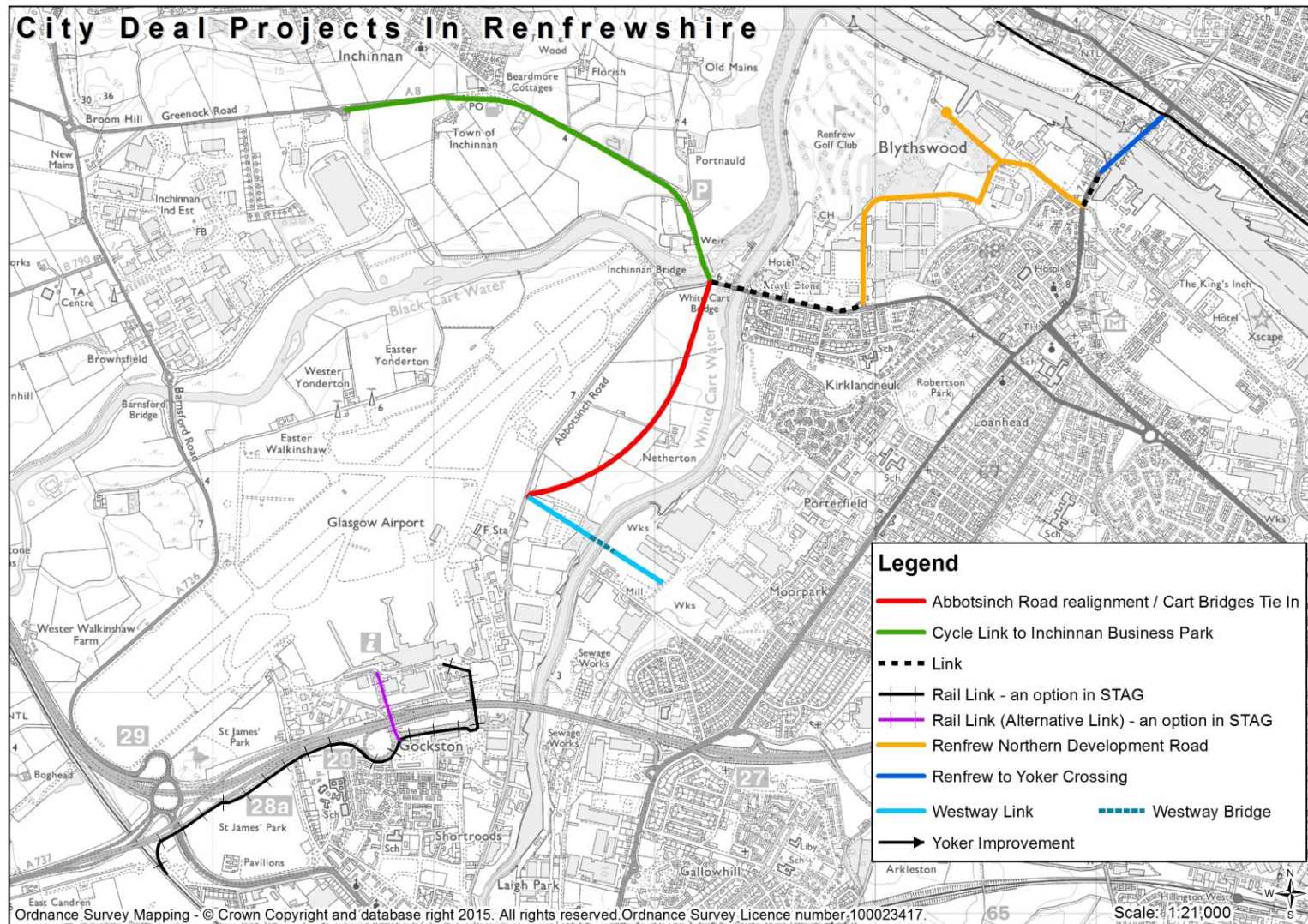
- Inchgreen, Inverclyde
- A8/M8 Corridor Access Improvements, North Lanarkshire
- Collegelands/Calton/Barras Action Plan, Glasgow
- Stewartfield Way, East Kilbride, South Lanarkshire
- Glasgow Metropolitan Drainage Strategy / Camlachie Burn, Glasgow
- Greenhills Road/A726 dualling, East Kilbride, South Lanarkshire
- Glasgow City Centre Public Realm
- M77 Corridor, East Renfrewshire
- Govan & Clyde Waterfront Regeneration, Glasgow
- Inverkip, Inverclyde
- Gartcosh Community Growth Area, North Lanarkshire
- Ocean Terminal, Inverclyde
- Community Growth Areas, South Lanarkshire
- Pan Lanarkshire Orbital Transport Corridor, North Lanarkshire
- Cathkin Bypass, South Lanarkshire
- Exxon Site, West Dunbartonshire
- Strathclyde Bus Investment Programme

City Deal Projects in Renfrewshire

- Glasgow Airport Investment Area
- Clyde Waterfront and Renfrew Riverside
- Airport Access



Project locations





Glasgow Airport Investment Area

- Roads, walking & cycling links, environmental improvements, possible bridge
- Renfrewshire Council project
- Stakeholders
 - Glasgow Airport
 - Westway
 - Others
- Infrastructure Costs £51m
- Start on site 2017
- Completion Year 2025





Clyde Waterfront / Renfrew Riverside

- Opening bridge over River Clyde in the vicinity of Yoker to Renfrew Ferry and roads infrastructure
- Renfrewshire Council project with north part of bridge within Glasgow City Council boundary
- Operation and Maintenance Requirement
- Stakeholders
 - Peel Ports (Clyde Port)
 - Glasgow City Council
 - Others
- Infrastructure Costs £78m
- Start on site 2018
- Completion Year 2020





Airport Access

- “Rail Link” subject to further design and assessment
- Glasgow Airport to Glasgow Central, stopping at Paisley Gilmour Street
- Project funding pan City Region, 8 no. Member Authorities
- Jointly delivered by two Member Authorities, Glasgow City Council and Renfrewshire Council
- Number of Stakeholders
- Operation and Maintenance requirement
- Infrastructure Costs £144m
- Start on site 2020
- Completion Year 2024





Renfrewshire Outcomes

- £274 million of the £1.13 billion on Renfrewshire infrastructure projects
- Enhanced Access for Renfrewshire residents to 59,000 jobs across the City Region
- Significant Local Business and Investment Opportunities for the next 20 years
- Focus on Benefits Realisation



Benefits Realisation

- Fundamental aspect of City Deal is Business / GVA growth;
- Need to understand how each project will deliver this in the short/medium/long term;
- This will be a significant challenge
- Benefits delivery and benefits realisation are critical aspects of each iteration of business case (SBC, OBC, FBC)
- Failure to demonstrate deliverable benefits/benefits realisation will affect progression of infrastructure projects (through business case appraisal and approval - and Gateways)
- Renfrewshire Council Working Group Established with Strong Focus on Benefits Delivery



Infrastructure Project Status

- Renfrewshire Council City Deal Governance Structures agreed and implemented
- Renfrewshire City Deal Team Established
- Renfrewshire Council economic benefits working group established with strong Focus on benefits delivery from Renfrewshire
- Stakeholder engagement underway
- PIN Notice issued for Consultancy Support
- **Draft** Strategic Business Cases prepared and submitted to PMO



Project 4 – Labour Market Programmes

New - £9million Employment Support Allowance (ESA)

Aligned - £15million “Youth Guarantee”

Enhanced - £600k Labour Market Progression Scheme



City Deal – ESA Delivery

INVEST
in Renfrewshire



- May 2015 – April 2018;
- 4000 Clients supported over 3 years (450 in Renfrewshire) with health related issues;
- Target of 15% progressed into and sustained in work;
- Renfrewshire Council receives 11.27% of the programme (£447,559 from DWP) and contributes £507,150;
- Aligns with wider “*Invest*” employability activity and financially supported through existing employability budgets.



The Youth Guarantee

INVEST
in Renfrewshire



- Aligning £15million of planned youth employability activity (ESF funded) to City Deal.
- Providing a guaranteed level of employability support to 15M young people and moving 5M into sustained work.
- Part of the Invest in Renfrewshire Employability programme and budgets.

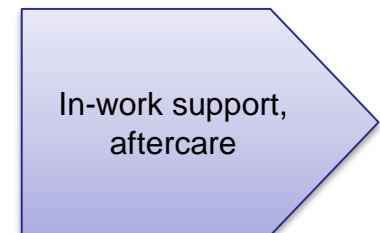
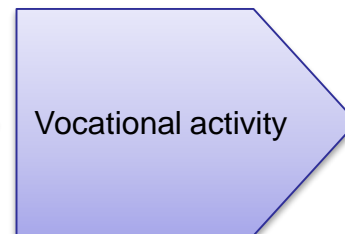
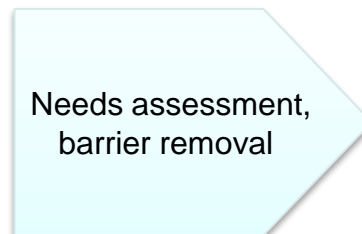
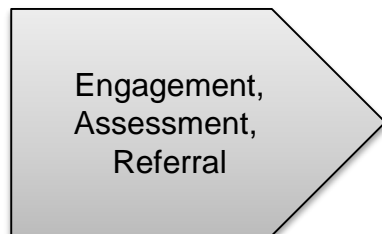
Support to Unemployed People (Renfrewshire)



INVEST
in Renfrewshire

Every client looking for support into work will undergo the same process:

1. They will engage with the staff from the employability services.
2. They will go through a common assessment to identify their requirements.
3. From the assessment they will have an action plan to identify the main supports required. Those more disengaged / further from the labour market will go through more support interventions.
4. A key worker will be appointed to support and meet regularly with them.
5. A separate vacancy management / employer liaison / in-work support team will be responsible for all employer links, jobs access and progression.



Poverty and Social Inclusion Support

Supporting health conditions, stress and anxiety

Debt support, money management, budgetary skills

Housing Support

Childcare support

Access to funding

Fuel poverty / energy advice

Stage 1/2

Stage 2 - 4

Stage 4/5

Core and Key Skills

Engagement

Activity Agreement

Core Skills

Confidence/Motivation

Personal Presentation

PX2

Working with others

Life skills

Career Options

Barrier Removal

Basic Employability Skills / Qualifications

Basic ICT/Core Skills

The world of work

CV support

First Aid/Food Hygiene

Customer Care

Further Assessment

Career Profiling

Steps to Excellence

Workplace visits/ Tasters

Vocational Skills / Qualifications/ Work experience/ Employability Skills

Training Academies

Vocational Programmes

Employability Fund (Stage 2/3)

Enterprise / Self Employ

Job Applications

Career Planning/ profiling

Interview techniques & practice

Work Experience

Intermediate Labour Market

Traineeships

Internships

Paid Work Experience

Community Jobs Renfrewshire

Employer Engagement and Job Matching

Employer Engagement

Wage Subsidies

Vacancy Handling

Job Matching

Finishing Schools

Aftercare and in work progression

Client / Company aftercare

In Work progression

Tracking

Initial Assessment
Action Plan
In work benefit check.
Personal Paperwork.
Bank account.
Proof of ID



INVEST
in Renfrewshire



Labour Market Progression

INVEST
in Renfrewshire



- Focussed on Glasgow only;
- Supporting Employees in Low Paid Sectors to upskill and progress in work;
- £600k to boost wages and support career progression (DWP and GCC);
- Other Councils (including Renfrewshire) delivering similar programmes through own resources;
- Lessons learned will inform wider policy.

Glasgow & Clyde Valley City Deal

