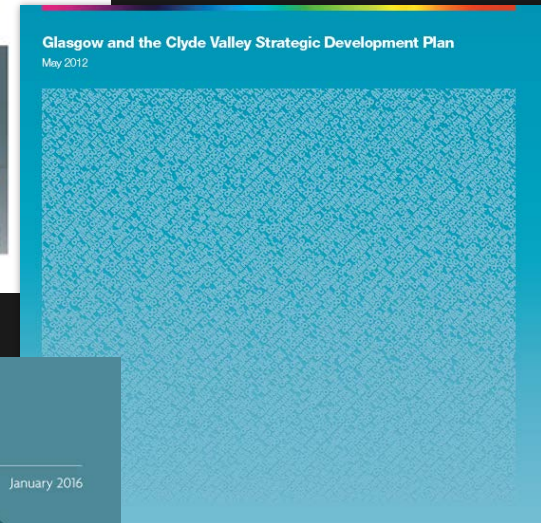


Strategic Planning in a City Region Context



Presentation

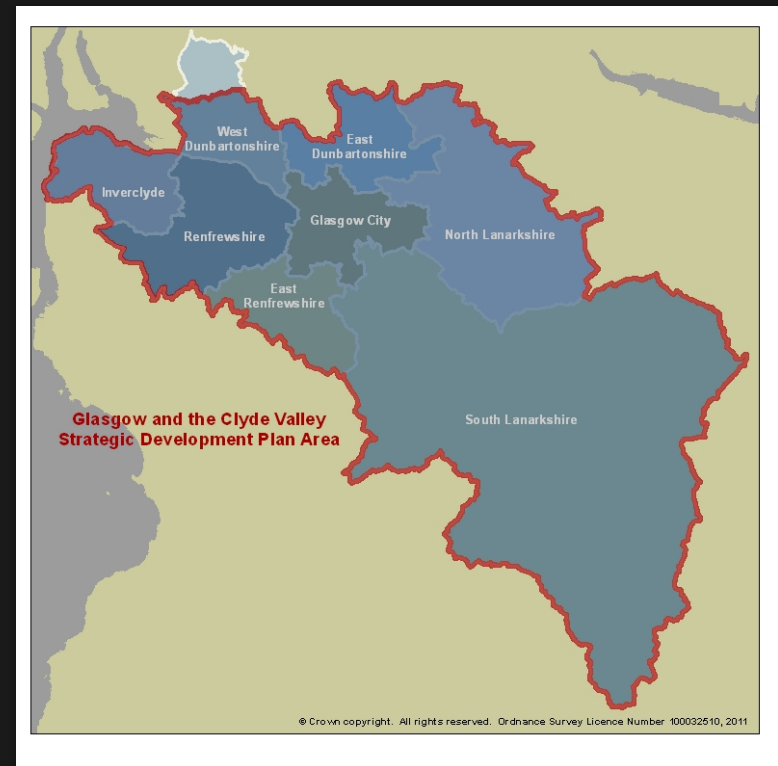
- Overview of strategic planning in Scotland - Clydeplan
- Strategic Development Plan
- Regional partnership working



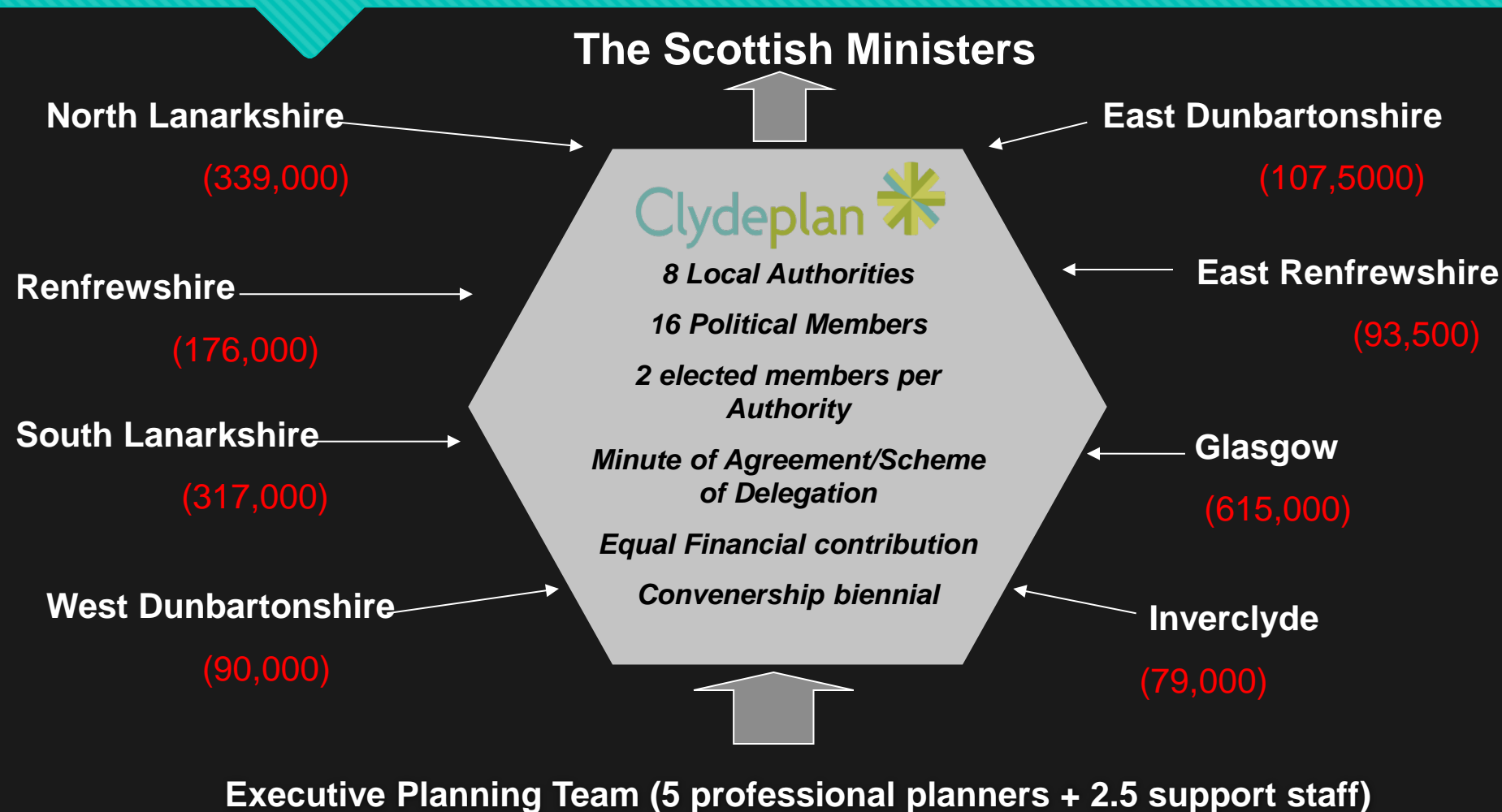
Glasgow City Region

8 Local Authorities

- **Total Population 1.75m
(34% of Scotland)**
- **33% of Scotland's GVA**
- **Largest of the 4 SDPA's in
Scotland**
- **Longstanding history of
'strategic' planning (60
years)**

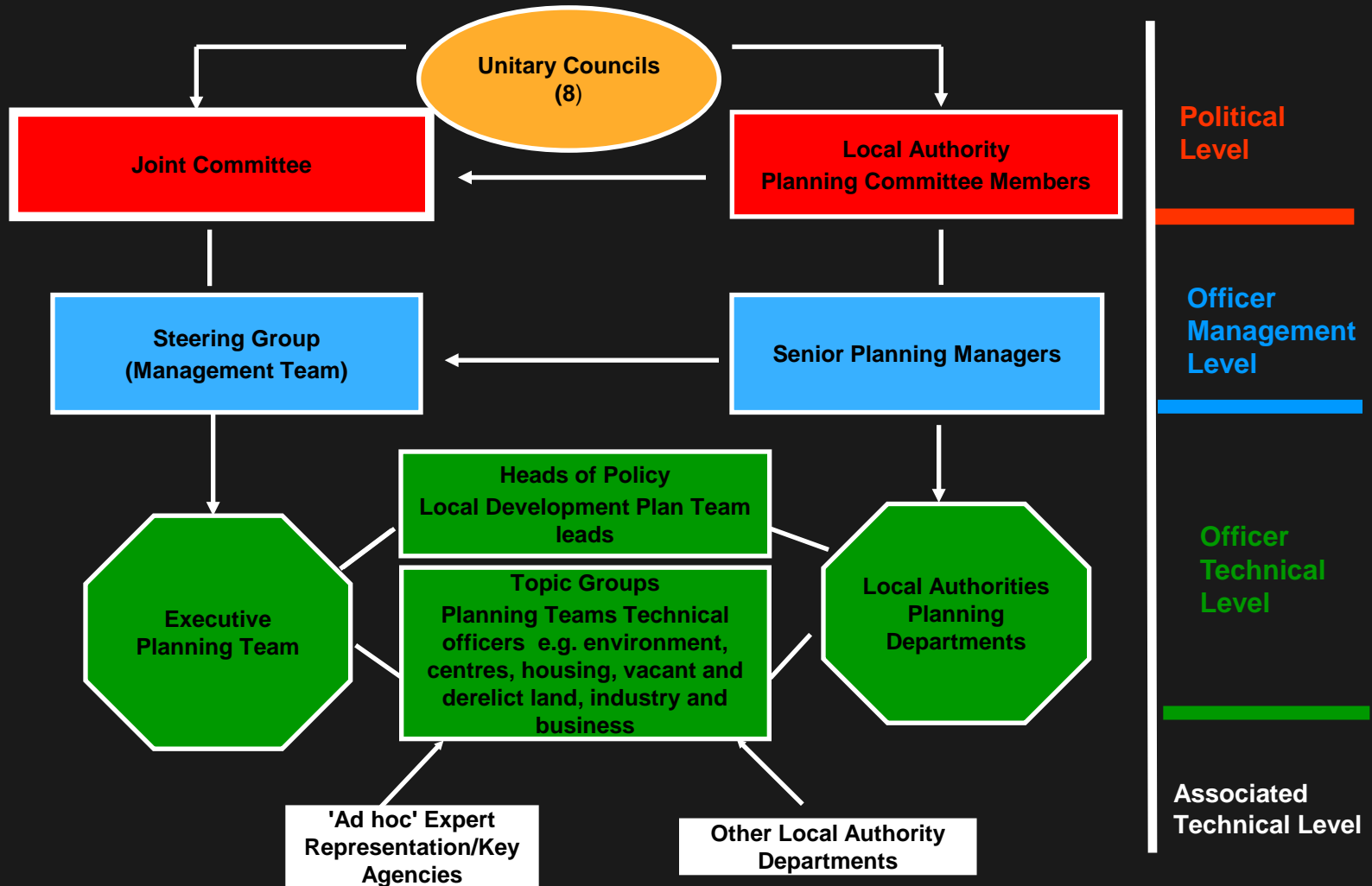


Clydeplan Model (1)



Clydeplan Model (2)

Internal Structure



Strategic Development Plans

Legislation and Policy

- Planning etc (Scotland) Act 2006
- SPP/NPF 3
- Advice notes
- EU Directives

Role and Function

- sets long term development vision for city-region
- concise and visionary
- reflects NPF/national policy
- sets context for LDPs (plan led system)
- statutory duty to contribute to sustainable development
- Locationally specific



Strategic Development Plan

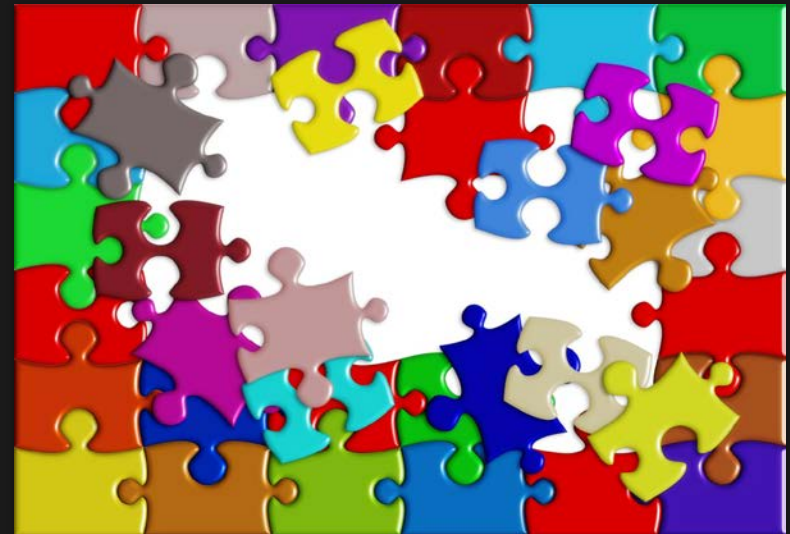
Key Stages

- **Main Issues Report** consultation (approved by Joint Committee); **January 2019**
- **Proposed Plan** consultation (approved by Joint Committee); **January 2020**
- Modifications if any (approved by Joint Committee);
- **Submission of Plan** to Scottish Ministers; **June 2021**
- **Examination by independent reporters appointed by Scottish Ministers;**
- **Approval** (with or without modifications) by Scottish Ministers **June 2022**

Replacement Strategic Development Plan to be submitted within 4 years of approval

The essence of strategic spatial planning

- City Region Strategy- (cross-boundary issues)
 - spatial development priorities
 - long-term infrastructure needs
 - Placemaking
- Long-term creating a climate of certainty and confidence
- Investment agenda for public and private sectors
- Investment priorities for stakeholder Partners
- Integrating economy, society and environment
- Integrating the stakeholder community



Same city region...?



How do we do it?



Technical analysis and evidence

- Demographics – population and household projections
- Economic forecasts
- Housing - Housing Need and Demand Assessment and Housing Land Audit
- Town Centre health checks and audits
- Industrial Land Supply
- Vacant and Derelict Land
- Land use and transport integration
- Strategic Environmental Assessment (SEA)
- Habitats Regulation Assessment (HRA)
- Equalities Impact Assessment

These provide the evidence base that underpins the SDP Spatial Strategy

Current Strategic Development Plan

Approved by Scottish Ministers (May 2012)

Ongoing monitoring and stakeholder engagement to inform the 'issues'

SDP2 submitted for approval 20th May 2017 - **Approval June 2017**



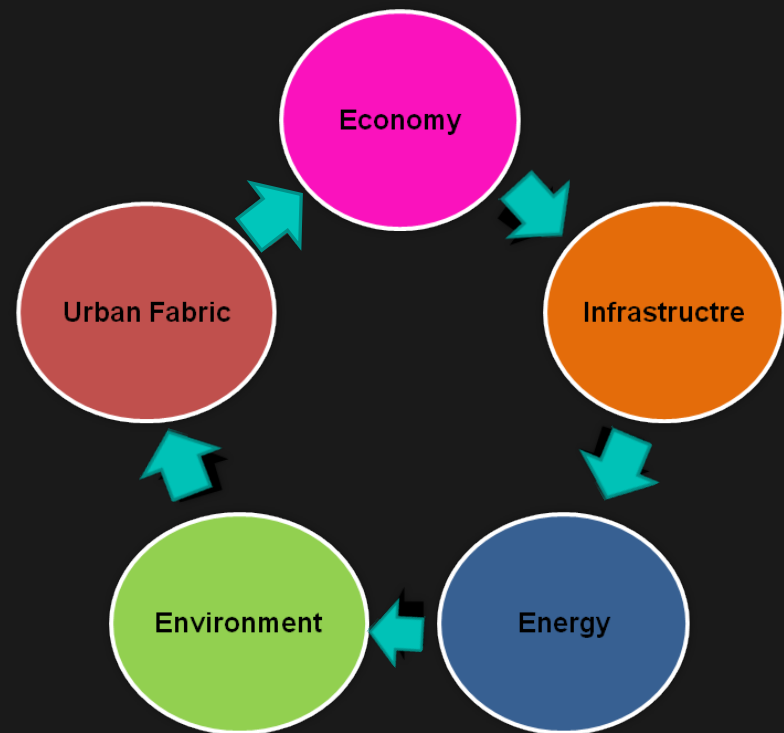
Current SDP Vision

Vision

- Compact city
- improved quality of place by focusing on the continued regeneration and transformation of the city-region's communities;
- securing positive action on its natural environment;
- enhanced connectivity;
- focus on developing key economic sectors

Drivers

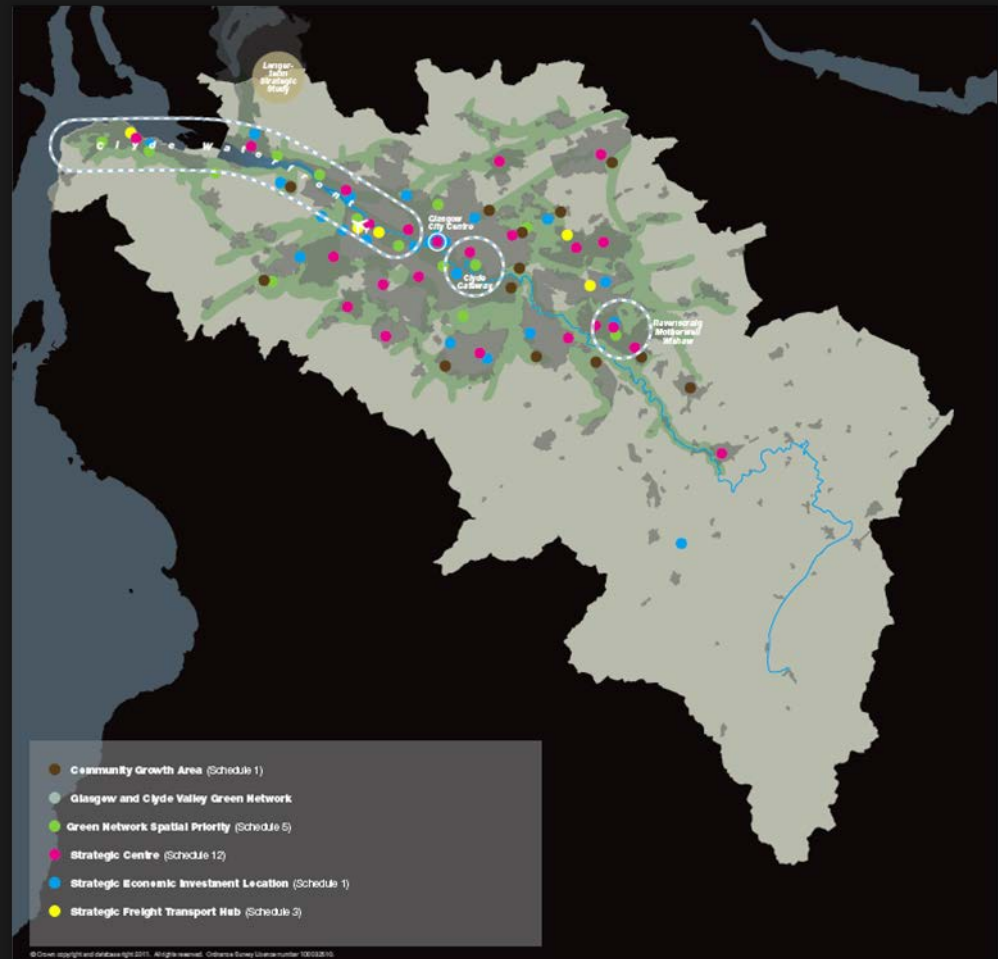
- Planned growth in terms of population, households and the economy
- Climate change and carbon emissions agenda



Key Components of the current SDP

1. Strategic Housing - All Tenure Housing Requirements for each LA/HMA
2. **City Centre**
3. Strategic Economic Investment Locations (SEIL's) and Freight Hubs
4. **Strategic Centres**
5. Key transport locations/projects including active travel
6. **Onshore wind spatial framework**
7. Green Network Strategic Delivery Areas
8. **Forestry and Woodland**
9. Green Belt
10. **Flooding**

Delivery actions set out in the **Action Programme (updated every 2 years)**



Scottish Ministerial Approval

Glasgow and the Clyde Valley Strategic Development Plan Approval Letter (May 2012)

“It should be understood that the Scottish Ministers’ approval of the plan does not convey any approval of any matter therein for any other statutory purpose.

In particular it does not commit the Scottish Ministers, or any government department, to the payment of grant on any particular project or to the amount or timing of any capital expenditure.”

Scottish Government Review of Scottish Planning System

September 2015 Independent Panel set out to review Scottish Planning System

May 2016 - report with recommendations submitted to Scottish Ministers

July 2016 Scottish Ministers published their response to the report

January - April 2017 public consultation on recommendations

Recommendation - removal of Strategic Development Plans from the Development Plan hierarchy in Scotland - replace with regional priorities set out in an enhanced National Planning Framework informed through regional partnership working approach

June/July 2017 - Position statement by Scottish Government to be published following analysis of the consultation responses

End of 2017 - Planning Bill scheduled for publication

SDP3?

- **Changed policy agenda- SPP/NPF4??**
- **Planning Review**
- **City Region Agenda / City Deal - £1.13bn City region led infrastructure fund**
- **Creating stronger linkages to Community Planning**

Glasgow City Region / City Deal



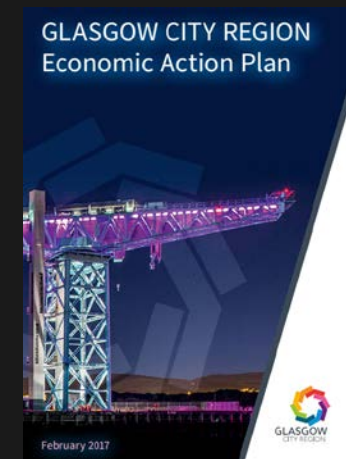
Governance - Cabinet (LA Leaders) and Chief Executives Group

Economic Strategy (December 2016) and Action Plan (February 2017)

8 subject based portfolios - each led by an individual Local Authority

(Enterprise / Tourism and Marketing / Transport and Connectivity / Skills and Employment / Inward Investment and Growth / Infrastructure and Assets / Housing and Inequalities / Land Use and Sustainability)

The Future - **Regional Partnership working** approach emerging as part of both the Enterprise and Skills Review and Planning Review



Challenges

- **Integrating the 'stakeholder' community - developing 'institutional capacity'**
- Land use planning often on the periphery of Corporate Governance structures
- **How to link land use planning into the Community Planning / emerging City Region Agenda**

The reality of delivery

- Separation of Planning and Implementation
- **Resources - Government and Private sector**
- Priorities - even national priorities can fall!
- **De-regulated operations**
- Private Development Sector
 - 'Bottom-line' v. Public Policy
 - Agenda and priority conflicts

Final Thoughts

Clydeplan is a resource to support the emerging city region joint working agenda as it can help deliver

- **Strategic Spatial Planning - an essential framework for co-ordinated strategic investment**
- **Land use expression of city region's economic strategy**
- **The art of making others think long-term**
- **'Change drivers' - changing policy and governance environment**
- **Developing Institutional Capacity - overcoming fragmentation and promoting partnership**

Useful links

- **Approved SDP** - www.clydeplan-sdpa.gov.uk/sdp/approved-strategic-development-plan-may-2012
- **SDP2 Proposed Plan** - www.clydeplan-sdpa.gov.uk/files/Proposed_Plan_Jan_2016_WEB_High_Res_Update.pdf
- **Website:** www.clydeplan-sdpa.gov.uk