

**Glasgow and the Clyde Valley Strategic Development Planning Authority**

**To: Glasgow and the Clyde Valley Strategic Development Planning Authority  
Joint Committee**

**On: 9<sup>th</sup> September 2019**

**Report by  
Stuart Tait, Manager**

**Action Programme 2019**

**1. Summary**

- 1.1 The purpose of this report is for the Joint Committee to consider an updated Action Programme in respect of the approved Strategic Development Plan (July 2017).

**2. Recommendation**

- 2.1 It is recommended that the Joint Committee
- approve the Action Programme 2019 (see Appendix); and,
  - agree that the Action Programme be published including electronically with two copies being sent to Scottish Ministers and copies placed in local libraries.

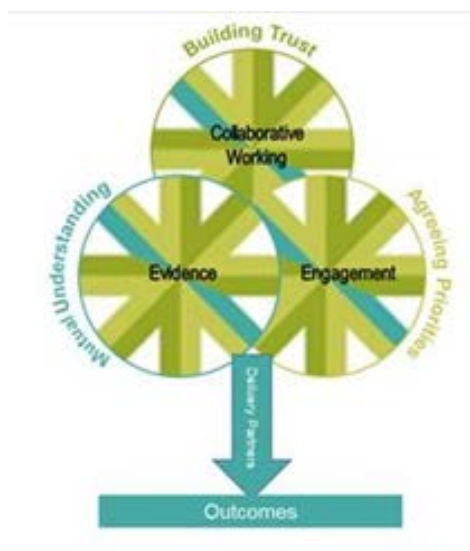
**3. Introduction**

- 3.1 Under the current legislative requirements of Section 21 of the Planning etc. (Scotland) Act 2006 and the Development planning Circular 6/2013, Action Programmes require to be reviewed and republished at least every 2 years and are to:
- consult and consider the views of a range of stakeholders;
  - set out a list of actions required to deliver each of the plan's policies and proposals;
  - provide the name of the person who is to carry out the action; and,
  - set out the timescale for carrying out each action.
- 3.2 Whenever an Action Programme is published two copies should be sent to Scottish Ministers, copies placed in local libraries and published electronically
- 3.3 The previous version was published in October 2017 and is available online:
- <https://www.clydeplan-sdpa.gov.uk/docman/current-plan-july-2017-key-documents/239-action-programme-2017>

#### 4. Action Programme

- 4.1 Following discussion with the Clydeplan Steering Group, the refresh has sought to present the Action Programme in a more succinct and accessible manner with the main activities now set out within the first four pages of the document (refer Appendix).
- 4.2 The approach taken describes Clydeplan's collaborative delivery role which includes the provision of evidence to develop a mutual understanding of the issues and agree the priorities, thereby providing a strong foundation for the delivery of outcomes. A diagrammatic has been developed which attempts to describe Clydeplan's role.

##### Clydeplan's Collaborative Delivery Model



- 4.3 The introductory text and the following three actions are particularly relevant:
- V1** Placemaking - Create a vibrant, attractive and sustainable city region in which to live, invest and visit;
  - V2** Support the preparation and delivery of other regional strategies and contribute to the strengthening of regional partnership collaborative working across the Glasgow City Region;
  - DEL1** Collaborating for Delivery.
- 4.4 The Action Programme reflects Clydeplan actions in the context of the latest version of the Glasgow City Region Regional Economic Strategy Action Plan which is also currently being refreshed.
- 4.5 The outcome is an Action Programme which seeks to more succinctly and appropriately describe Clydeplan's delivery role and which also reflects the Glasgow City Region emerging activities. The approach taken is considered to be more pragmatic, rounded and reflective of ongoing discussion with the Key Agencies, the Scottish Government and wider city region stakeholders in the context of the new planning system being established through the Planning (Scotland) Act 2019.
- 4.6 The Action Programme will be kept under review.

## Appendix



## Action Programme





### Collaborating to Deliver Growth In the Glasgow City Region



**October 2019**



## Contents

Introduction	2
Clydeplan's Collaborative Delivery Model	4
Stakeholder Feedback and Developing the Action Programme	4
<u>The Actions</u>	5
City Region Vision	6
A Successful, Sustainable Place 	15
A Low Carbon Place 	22
A Natural, Resilient Place 	23
A Connected Place 	27
Delivering the Strategy	29

## Introduction

1. Clydeplan is the strategic land use planning authority constituted to prepare the Strategic Development Plan (SDP) for Scotland's only metropolitan city region comprising East Dunbartonshire, East Renfrewshire, Inverclyde, Glasgow City, North Lanarkshire, Renfrewshire, South Lanarkshire and West Dunbartonshire.
2. This Action Programme refresh is being undertaken under the legislative provisions of the Town and Country Planning (Scotland) Act 1997 (as amended). New planning legislation, the Planning (Scotland) Act 2019 was enacted on 25<sup>th</sup> July 2019 and this removes the statutory duty to prepare a SDP replacing this with a duty to prepare a Regional Spatial Strategy. Unlike the Strategic Development Plan the Regional Spatial Strategy will not form part of the statutory development plan system.

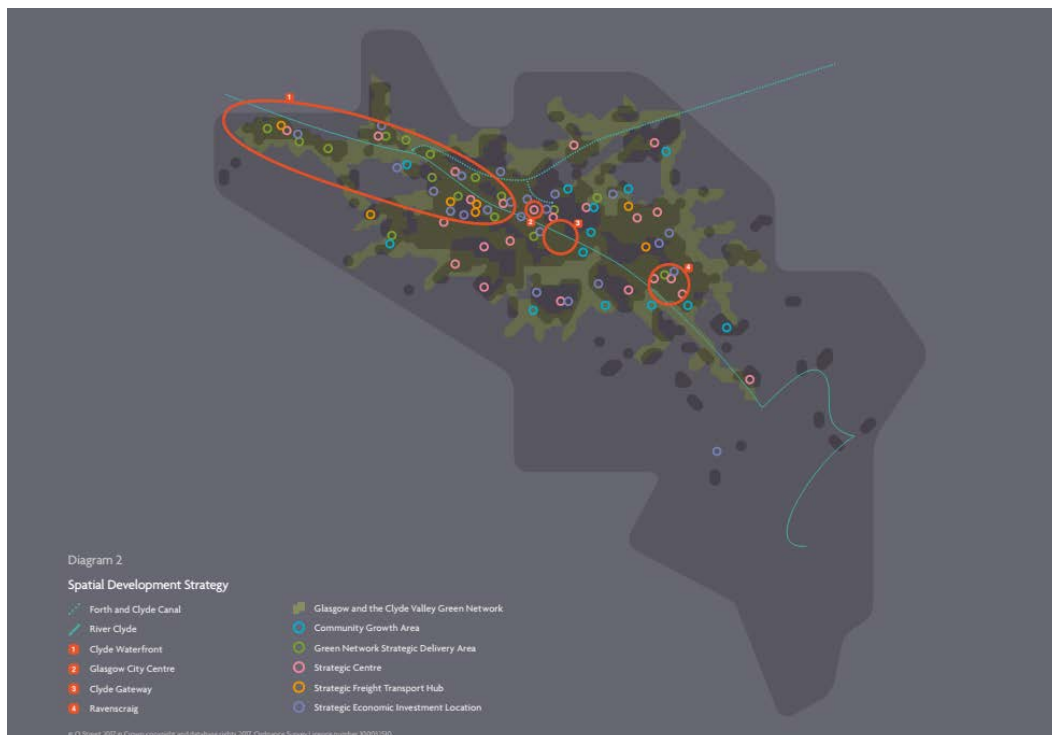
### **Clydeplan Vision**

#### ***The place we want to create:***

***By 2036 Glasgow and the Clyde Valley will be a resilient, sustainable compact city region attracting and retaining investment, improving the quality of life for people and reducing inequalities through the creation of a place which maximises its economic, social and environmental assets ensuring it fulfills its potential as Scotland's foremost city region.***

3. In support of its Vision Clydeplan has set out a Spatial Development Strategy focused on a Development Corridor running east to west through the city region. It includes transformational projects such as the Clyde Waterfront, Clyde Gateway, City Centre, Ravenscraig, the Glasgow and the Clyde Valley Green Network, Community Growth Areas, and sets out actions to support its Strategic Centres, Strategic Economic Investment Locations and Strategic Freight Hubs.

## Clydeplan Spatial Development Strategy



4. The current approved SDP (July 2017) aims to create a quality of place by focusing on the continued regeneration and transformation of the city region's communities whilst securing positive action on its key economic, social and environmental assets.
5. The SDP is centred around creating high quality places and is focused on the delivery of the four planning outcomes set out in national planning policy:



a Successful, Sustainable Place



a Low Carbon Place



a Natural Resilient Place



a Connected Place



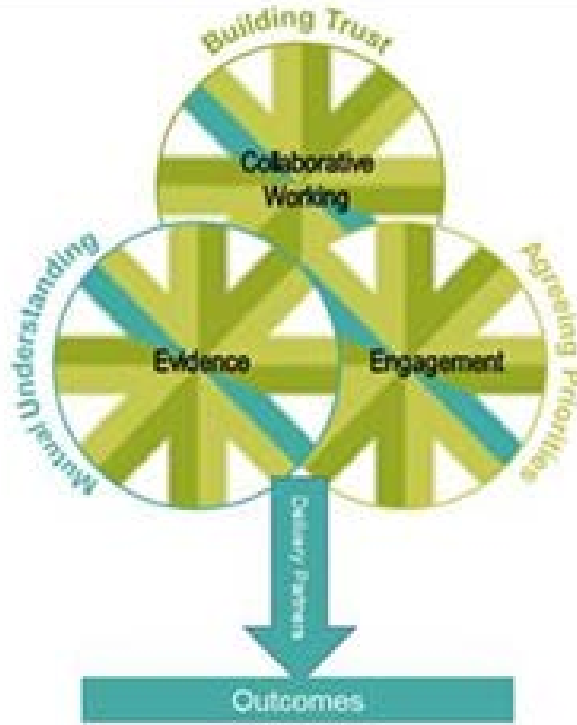
6. The SDP seeks to minimise the carbon footprint of the city region and support a drive towards a sustainable low-carbon economy by setting out the overall geographical framework for development within which the eight constituent local authorities will formulate their Local Development Plans and against which they will assess planning applications and formulate delivery activities.
7. The SDP also provides the public, stakeholders and the development and investment industries with confidence that a consistent strategic planning approach for the long-term sustainable future of the city region is in place.
8. Clydeplan itself is however not a direct delivery organisation and is neither constituted nor funded to deliver development or infrastructure on the ground. Rather Clydeplan's delivery role is working collaboratively with delivery partners and wider stakeholders, to develop a mutual understanding of the issues, agree the priorities, and thereby provide a strong foundation for the delivery of outcomes. Collaboration and partnership working is a vitally important aspect of Clydeplan's delivery role exemplified in the Collaborative Delivery Model overleaf.
9. In recent times, the Glasgow City Region City Deal Infrastructure Fund of £1.13 billion has brought forward a range of projects that are now delivering on elements of the Clydeplan Vision and Spatial Development Strategy. The Glasgow City Region structures and organisational arrangements are now being formed including its Regional Economic Partnership and Clydeplan is playing a key role in supporting these regional collaborative activities. Going forwards therefore, the role of Clydeplan will transition to undertake the Regional Spatial Strategy preparation and other relevant activities within the city region context.
10. The Glasgow City Region Economic Strategy and related Action Plan were prepared in 2016/17 and are currently being refreshed and Clydeplan's Action Programme will continue to align closely and support the strategic aims of those documents.

### ***Glasgow City Region Vision***

**A strong, inclusive, competitive and outward-looking economy, sustaining growth and prosperity with every person and business reaching their full potential**

11. This Action Programme sets out some of the key actions that will be required to ensure success in delivering the SDP Vision and Spatial Development Strategy and related Vision of the Glasgow City Region Economic Strategy.

## Clydeplan's Collaborative Delivery Model



### Stakeholder Feedback and Developing the Action Programme

12. Clydeplan, working with its partners, will continue to shape and refine the actions required to deliver on the Clydeplan strategy, and will update the Action Programme periodically. Further and ongoing feedback is sought on this Action Programme and will be utilised to develop the actions and influence the ongoing activities of Clydeplan and its delivery partners.

#### Contact Details

Stuart Tait  
Manager  
Clydeplan  
Lower Ground Floor  
125 West Regent Street  
Glasgow  
G2 2SD  
Email: [info@clydeplan-sdpa.gov.uk](mailto:info@clydeplan-sdpa.gov.uk)  
Tel: 0141 229 7730  
Online: [www.clydeplan-sdpa.gov.uk](http://www.clydeplan-sdpa.gov.uk)  
Twitter: @Clydeplan

## The Actions

City Region Vision	
<b>V1</b>	Placemaking - Create a vibrant attractive and sustainable city region in which to live, invest and visit
<b>V2</b>	Support the preparation and delivery of other regional strategies and contribute to the strengthening of regional partnership collaborative working
<b>V3</b>	Prepare a refreshed Regional Spatial Strategy
<b>V4</b>	Identify Regional Priorities
<b>V5</b>	Provide information to support NPF4 preparation

City Region as a Successful, Sustainable Place	
<b>SSP1</b>	Identify and support delivery of the key spatial assets in the City Region
<b>SSP2</b>	Support Infrastructure Delivery
<b>SSP3</b>	Support the Delivery of New Homes
<b>SSP3/1</b>	Assist in the development of a Regional Strategy for Housing Delivery
<b>SSP3/2</b>	Assist in the development of a regional approach to the optimum use of public sector land and assets
<b>SSP3/3</b>	Assist in the preparation of a housing evidence including the Housing Need and Demand Assessment



City Region as a Low Carbon Place	
<b>LCP1</b>	Support the development and implementation of a city region Climate Change Adaptation Strategy and Action Plan



City Region as a Natural Resilient Place	
<b>NRP1</b>	Support the Implementation of the Green Network Blueprint
<b>NRP2</b>	Prepare Supplementary Guidance for Forestry and Woodland
<b>NRP3</b>	Support the preparation of a regional vacant and derelict land strategy



City Region as a Connected Place	
<b>CP1</b>	Support the preparation of the Regional Transport Strategy and Regional Transport Plan
<b>CP2</b>	Support increasing levels of active travel



Delivering the Vision	
<b>DEL1</b>	Collaborate for Delivery



V1	<b>Placemaking - Create a vibrant, attractive and sustainable city region in which to live, invest and visit</b>
Action	<b>Clydeplan will continue to work collaboratively with key delivery partners and stakeholders to undertake activities to promote and support the creation of a vibrant attractive and sustainable place in which to live, invest and visit, through application of Clydeplan's Placemaking Policy.</b>
<b>Clydeplan SDP Policy 1: Placemaking</b>	
<b>Clydeplan SDP Vision and Spatial Development Strategy</b>	

Clydeplan has set a Vision and Spatial Development Strategy for the future of the city region to 2036 based on a growing population and a growing sustainable and inclusive economy.

**The place we want to create**

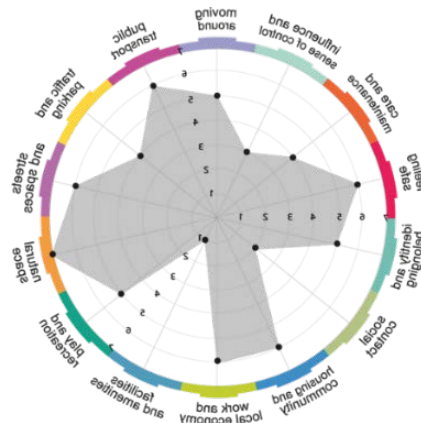
By 2036 Glasgow and the Clyde Valley will be a resilient, sustainable compact city region attracting and retaining investment, improving the quality of life for people and reducing inequalities through the creation of a place which maximises its economic, social and environmental assets ensuring it fulfills its potential as Scotland's foremost city region.

Clydeplan supports the key spatial priorities set out in the Spatial Development Strategy including the City Centre, Strategic Economic Investment Locations, Strategic Freight Transport Hubs, Strategic Centres, Community Growth Areas and Ravenscraig.

This Vision and Spatial Development Strategy identify the key spatial priorities which form the context for activity and investment by delivery partners.

Best practice in utilising place making principles within plan and design development, has now evolved into the 'Place Standard' developed jointly by the Scottish Government, Architecture and Design Scotland and the NHS Scotland and more recently the 'Place Principle'. The Place Principle aims to help overcome organisational and sectoral boundaries, to encourage better collaboration and community involvement, and improve the impact of combined energy, resources and investment.

**Place Standard Tool**



Architecture & Design Scotland  
Aithearsachd is Dealbhadh na h-Alba

NHS  
Health Scotland



Scottish Government  
Riaghaltas na h-Alba  
gov.scot

## City Region Vision

For delivery partners in the city region, and in particular the local authorities, the place principle is about promoting a shared understanding of place, and the need to take a more joined-up, collaborative approach to services and assets to achieve better outcomes for people and communities.

Clydeplan will continue to work collaboratively with its delivery partners to ensure that these principles and the focus on place outcomes, are embedded at all scales of plan and place making from regional to local and project level scale.

This activity will continue to inform the activities of Clydeplan in its collaborative work with wider delivery partners and stakeholders and will assist with the preparation of the next Regional Spatial Strategy.



Extract: Clydeplan Strategic Development Plan Page 14

<b>Delivery Partners</b>	Local Authorities, Glasgow City Region, Development Industry
<b>Timescale</b>	Ongoing
<b>Weblinks</b>	<a href="https://www.clydeplan-sdpa.gov.uk/">https://www.clydeplan-sdpa.gov.uk/</a> <a href="https://placestandard.scot/">https://placestandard.scot/</a> <a href="https://www.gov.scot/publications/place-principle-introduction/">https://www.gov.scot/publications/place-principle-introduction/</a>

<b>V2</b>	<b>Support the preparation and delivery of regional strategies and contribute to the strengthening of regional partnership collaborative working</b>
<b>Action</b>	<b>Clydeplan will continue to provide support for other regional strategy preparation and implementation, and contribute to the strengthening of regional collaborative working arrangements.</b>
<b>Clydeplan SDP Policy 2: Leadership and Delivery</b>	
<p>➤ <b>Preparation and Delivery of Regional Strategies</b></p> <p>Clydeplan's will continue to support the preparation, delivery and continuing closer alignment of relevant strategies, plans and delivery programmes, in order to develop and deliver on, mutually agreed priorities within the metropolitan area of the Glasgow City Region.</p> <p>Relevant strategies, plans and delivery programmes include:</p> <ul style="list-style-type: none"> <li>• Regional Spatial Strategy;</li> <li>• Regional Transport Strategy and Regional Transport Plan;</li> <li>• Regional Economic Strategy;</li> <li>• Green Network Strategy and Blueprint;</li> <li>• Regional Climate Adaptation Strategy and Action Plan;</li> <li>• Clyde Regional Marine Plan;</li> <li>• Clyde and Loch Lomond Flood Risk Management Strategy</li> <li>• Regional Strategy for Housing Delivery;</li> <li>• Regional Vacant and Derelict Land Strategy;</li> <li>• Strategic Infrastructure Investment Plan;</li> <li>• City Region Digital Connectivity Strategy;</li> <li>• Regional Investment Prospectus;</li> <li>• Glasgow City Region Tourism Strategy 2018-2023</li> <li>• Metropolitan Glasgow Surface Water Management Masterplan;</li> <li>• West Partnership Regional Improvement Plan (Education Collaborative); and,</li> <li>• City Deal Programme.</li> </ul> <p>➤ <b>Developing the evidence and mutual understanding</b></p> <p>A key activity that assists in bringing continuity and coherence to regional working, is the development of the evidence base from which policy and delivery activity stems. Clydeplan will continue to:</p> <ul style="list-style-type: none"> <li>• undertake annual monitoring of land supplies and trends; <ul style="list-style-type: none"> <li>◦ Housing Land Audit</li> <li>◦ Industrial and Business Land Supply</li> <li>◦ Scottish Vacant and Derelict Land Supply</li> <li>◦ Urban Capacity Sites</li> <li>◦ Community Growth Areas</li> <li>◦ Strategic Economic Investment Location</li> <li>◦ Freight Hubs</li> <li>◦ Strategic Centres</li> </ul> </li> <li>• contribute to the annual refresh of the Glasgow City Region Regional Strategic Assessment;</li> <li>• refresh the evidence base for Regional Spatial Strategy preparation; and,</li> </ul>	

- collaborate with stakeholders to develop an agreed understanding of the evidence and its implications for regional strategies and activities.

### ➤ **Contribute to the Strengthening of Regional Partnership Collaborative Working**

Clydeplan has set a Vision and Spatial Development Strategy for the future of the city region to 2036 based on a growing population and a growing sustainable and inclusive economy. Key spatial priorities set out in the Spatial Development Strategy including the City Centre, Strategic Economic Investment Locations, Strategic Freight Transport Hubs, Strategic Centres, Community Growth Areas and Ravenscraig.

As Clydeplan has no direct delivery role, the Vision and Spatial Development Strategy form the context for activity and investment by key delivery partners and stakeholders. Therefore continuing collaborative work with those key delivery partners is central to the delivery of Clydeplan's Vision and Spatial Development Strategy.

The context of Clydeplan's delivery role is exemplified in the Collaborative Delivery Model referenced earlier in the introduction. Through the development of mutual understanding of the issues and collaborative working arrangements, the priorities can be agreed providing a strong foundation for the delivery of agreed priorities and outcomes.

Schedule V1 below lists the range of organisations that Clydeplan has identified as key delivery partners and with whom it has established collaborative working arrangements. This has been done through a range of approaches including:

- Clydeplan's internal approach to its strategy preparation and delivery activities, working with its Joint Committee, Steering group and other working groups;
- Clydeplan's involvement on the Steering Groups, Boards and other management team arrangements of partner organisations such as the Strathclyde Partnership for Transport (SPT), Glasgow Clyde Valley Green Network Partnership, Climate Ready Clyde and the Metropolitan Glasgow Strategic Drainage Partnership (MGSDP).
- Concordat agreements with other organisations including Homes for Scotland and SPT;
- Direct engagement with other key organisations.

### ➤ **Glasgow City Region**



Glasgow City Region now has a significant role to play as a key delivery partner involving the 8 local authorities plus other important delivery bodies such as the UK and Scottish Governments, Scottish Enterprise and Skills Development Scotland.

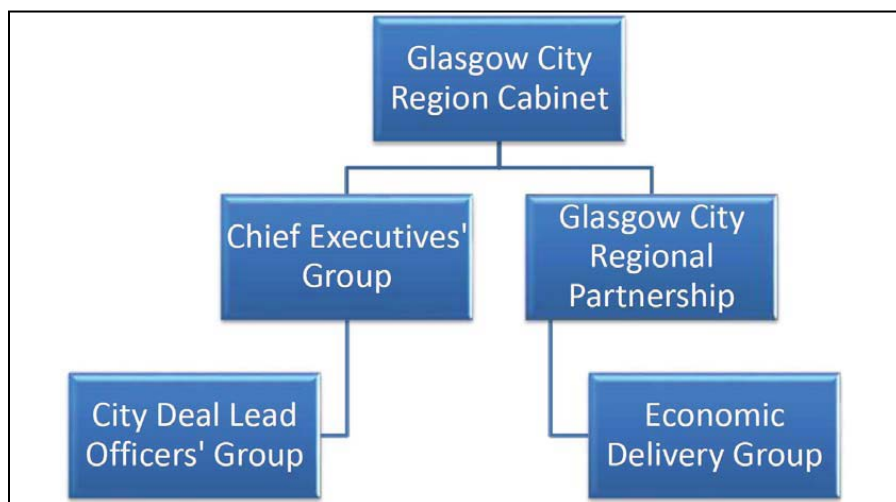
Clydeplan's will continue to support the emerging regional structures and related activities to ensure that the priorities and actions of the Glasgow City Region and Clydeplan remain closely aligned. Delivery of the £1.13bn package of infrastructure projects is ongoing with oversight provided by the Glasgow City Region Cabinet.

A Director of Regional Economic Growth has now been appointed and an Intelligence Hub established with recent appointments of a Manager and Development Officer.

In April 2018, a report by the Director of Regional Economic Growth on governance and organisational arrangements was considered and approved by the Glasgow City Region

Cabinet as a result of which a Glasgow city region Regional Economic Partnership was established.

**Glasgow City Region Partnership Structure Diagram**



Within the above evolving structures eight thematic portfolio groups have been established each led by one of the eight authorities and Clydeplan continues to play an active role supporting the place themed portfolios and wider Glasgow City Region activities particularly in respect of the place portfolios as follows:

- Sustainability and Land Use (led by East Dunbartonshire Council);
- Transport and Connectivity (led by North Lanarkshire Council);
- Infrastructure and Assets (led by East Renfrewshire Council); and,
- Housing and Equalities (led by West Dunbartonshire Council).

Clydeplan will continue to support the evidence, monitoring and intelligence requirements of the Glasgow City Region activities. In particular, Clydeplan played an active role in the preparation of the Glasgow City Region Regional Strategic Assessment and will continue to contribute to its further refinement.

Clydeplan is actively supporting the refresh of the Regional Economic Strategy and its Action Plan which is ongoing in 2019. The Glasgow City Region and Clydeplan Vision are becoming increasingly closely aligned with the place and environmental objectives of Clydeplan now likely to be more fully reflected in the Glasgow City Region Regional Economic Strategy refresh. Discussions are continuing about fuller integration of Clydeplan, the Green Network Partnership and Climate Ready Clyde into the emerging Glasgow City Region structures and later in 2019, the aforementioned 3 teams are physically locating to offices within Glasgow City Council where the Glasgow City Region is located.

<b>Delivery Partners</b>	Glasgow City Region/Local Authorities/Development Industry/Wider Stakeholders (See Schedule V1)
<b>Timescale</b>	Ongoing
<b>Weblinks</b>	<a href="http://www.glasgowcityregion.co.uk/">http://www.glasgowcityregion.co.uk/</a> <a href="http://www.glasgow.gov.uk/GCR_Cabinet">http://www.glasgow.gov.uk/GCR Cabinet</a>

## SCHEDULE V1, KEY DELIVERY PARTNERS AND STAKEHOLDERS

<b>Local Planning Authorities:</b>	in respect of Development Planning, Development Management, project delivery and development related activities.
<b>Local Authorities:</b>	in respect of their wider Community Planning role and range of relevant local strategies such as Economic Development Strategies, Local Transport Strategies, Local Housing Strategies, Single Outcome Agreements, Community Plans, project delivery, development related activities and in relation to the prioritisation and allocation of public resources.
<b>Glasgow City Region:</b>	a Joint Committee of between the eight local authorities working together to benefit the City Region through its Economic Strategy and Action Plan and a £1.13billion City Deal Infrastructure Fund.

### The Key Agencies

Scottish Natural Heritage  
 Scottish Environment Protection Agency  
 Scottish Water  
 Scottish Enterprise  
 Strathclyde Partnership for Transport  
 NHS Greater Glasgow and Clyde  
 NHS Lanarkshire



### Other Key Delivery Partners and Wider Stakeholders

Centre for Housing Market Analysis	Network Rail
Central Scotland Green Network Trust	Openreach
Chamber of Commerce	Scotland's Towns Partnership
Climate Ready Clyde	Scottish Canals
Clyde Marine Planning Partnership	Scottish Futures Trust
Forestry Commission Scotland	Scottish Gas Networks (SGN)
Glasgow Clyde Valley Green Network Partnership	Scottish Government
Glasgow City Region Housing Market Partnership	Scottish Power Energy Networks
Glasgow Centre for Population Health	Transport Scotland
Historic Environment Scotland	Visit Scotland
Marine Scotland	Virgin Media
Metropolitan Glasgow Strategic Drainage Partnership	

### The Development Industry:

Homes for Scotland  
 Housing developers and house builders  
 Registered Social Landlords  
 Scottish Property Federation  
 Scottish Retail Consortium  
 Scottish Renewables



## City Region Vision

<b>V3</b>	<b>Prepare a refreshed Regional Spatial Strategy</b>
<b>Action</b>	<b>Clydeplan will prepare a refreshed Regional Spatial Strategy to replace the current Clydeplan Strategic Development Plan by July 2022</b>
<b>Clydeplan SDP Vision and Spatial Development Strategy</b>	
<p>Under the requirements of the Planning (Scotland) Act 2019, Clydeplan will work with its eight constituent Glasgow City Region local authorities, the Key Agencies and wider stakeholders, to prepare a Regional Spatial Strategy for the Glasgow City Region. This will replace the existing spatial strategy provide by the Clydeplan Strategic Development Plan (July 2017).</p> <p>The preparation of the Regional Spatial Strategy will enable further integration of other Glasgow City Region and national strategies, including those on economic development, transport, housing, green network and climate change mitigation and adaptation.</p> <p>The preparation of monitoring information and evidence is ongoing and early stakeholder engagement has commenced. The Regional Spatial Strategy will be prepared by July 2022, five years from publication of Clydeplan Strategic Development Plan (July 2017). Clydeplan will actively support a co-production approach with Scottish Government to the development of the Regional Spatial Strategy.</p> <p>Guidance on the preparation of Regional Spatial Strategies is to be prepared by the Scottish Government</p>	
<b>Delivery Partners</b>	Local Authorities, Glasgow City Region, wider stakeholders
<b>Timescale</b>	July 2022
<b>Weblinks</b>	<a href="https://www.clydeplan-sdpa.gov.uk/">https://www.clydeplan-sdpa.gov.uk/</a> <a href="http://www.legislation.gov.uk/asp/2019/13/contents/enacted">http://www.legislation.gov.uk/asp/2019/13/contents/enacted</a>

## City Region Vision

<b>V4</b>	<b>Identify Regional Priorities</b>
<b>Action</b>	<b>Clydeplan will continue to work collaboratively with its Glasgow City Region delivery partners and wider stakeholders, to identify regional priorities to inform the refreshed National Planning Framework and ongoing activities within the Glasgow City Region.</b>
<b>Clydeplan SDP Policy 2: Leadership and Delivery</b>	
As part of the preparation of the refreshed Regional Spatial Strategy, working with the Glasgow City Region and wider stakeholders, Clydeplan will identify regional priorities to support Glasgow City Region activities and the Scottish Government's fourth National Planning Framework. Clydeplan will actively support with a co-production approach with Scottish Government to the development of the National Planning Framework.	
<b>Delivery Partners</b>	Glasgow City Region/Local Authorities/Scottish Government/wider stakeholders
<b>Timescale</b>	To align with NPF4 preparation timescales currently unknown (Scottish Government update expected September 2019)
<b>Weblinks</b>	<a href="https://www.clydeplan-sdpa.gov.uk/">https://www.clydeplan-sdpa.gov.uk/</a> <a href="https://www.clydeplan-sdpa.gov.uk/clydeplan%20DPS%202019-2020.pdf">https://www.clydeplan-sdpa.gov.uk/clydeplan DPS 2019-2020.pdf</a> <a href="http://www.legislation.gov.uk/asp/2019/13/contents/enacted">http://www.legislation.gov.uk/asp/2019/13/contents/enacted</a>



## City Region Vision

<b>V5</b>	<b>Provide information to assist NPF4 preparation</b>
<b>Action</b>	<b>Clydeplan will continue to work collaboratively with its Glasgow City Region delivery partners and wider stakeholders, to provide information to support NPF4 preparation</b>
<b>Clydeplan SDP Policy 2: Leadership and Delivery</b>	
<p>As required by Section 3AC of the Planning (Scotland) Act 2019, as part of the preparation of the refreshed Regional Spatial Strategy and working with the Glasgow City Region and wider stakeholders, Clydeplan will provide information to assist NPF4 preparation.</p> <p>A planning authority, or two or more planning authorities in cooperation, are to provide information about the following matters:</p> <ul style="list-style-type: none"> <li>(a) the principal physical, cultural, economic, social, built heritage and environmental characteristics of the area,</li> <li>(b) the principal purposes for which land in the area is used,</li> <li>(c) the size, composition and distribution of the population of the area,</li> <li>(d) the housing needs of the population of the area,</li> <li>(e) the capacity of education services in the area,</li> <li>(f) the capacity of health services in the area,</li> <li>(g) the health needs of the population of the area,</li> <li>(h) the housing needs of older people and disabled people within the area,</li> <li>(i) the desirability of allocating land for the purposes of resettlement,</li> <li>(j) the infrastructure of the area (including communications, transport and drainage systems and systems for the supply of water and energy),</li> <li>(k) how that infrastructure is used,</li> <li>(l) any change which the planning authority or authorities think may occur in relation to any of the matters mentioned in paragraphs (a) to (k), and</li> <li>(m) such other matters as are prescribed.</li> </ul>	
<b>Delivery Partners</b>	Glasgow City Region/Local Authorities/Scottish Government/wider stakeholders
<b>Timescale</b>	To align with NPF4 preparation timescales currently unknown (SG update expected summer)
<b>Weblinks</b>	<a href="https://www.clydeplan-sdpa.gov.uk/">https://www.clydeplan-sdpa.gov.uk/</a> <a href="http://www.legislation.gov.uk/asp/2019/13/contents/enacted">http://www.legislation.gov.uk/asp/2019/13/contents/enacted</a>

<b>SSP1</b>	<b>Identify and support delivery and enhancement of the key spatial assets in the City Region</b>
<b>Action</b>	<b>The Clydeplan SDP sets a policy context that supports sustainable economic growth and the delivery of the aims of the Glasgow City Region Economic Strategy and Action Plan to increase jobs and the working population. Clydeplan will continue to work collaboratively with Glasgow City Region partners and stakeholders to support delivery with a particular focus on the identified Strategic Economic Investment Locations, the Network of Strategic Centres and Strategic Freight Hubs</b>
<b>Clydeplan SDP Vision and Spatial Development Strategy</b> <b>Clydeplan SDP Joint Strategic Commitment - Glasgow City Centre</b> <b>Clydeplan SDP Policy 4: Network of Strategic Centres</b> <b>Clydeplan SDP Policy 5: Strategic Economic Investment Locations</b> <b>Clydeplan SDP Policy 6: Strategic Freight Transport Hubs</b>	
<p>The Glasgow City Region has a key role in addressing issues relevant to the delivery of a successful and inclusive regional economy. The Glasgow City Region Regional Economic Strategy and related Action Plan are currently being refreshed.</p> <p>Clydeplan's role is in preparing a spatial strategy that identifies and supports the delivery and enhancement of the key spatial assets of the city region in support of a growing and inclusive economy. Beyond that the role of Clydeplan is largely a facilitative and coordinating one, which raises awareness of these locations and the need for their safeguarding, development, and improvement, along with collaborative working with key delivery partners to ensure that investment and resource prioritisation decisions and activities, align to support the identified locations.</p> <p>Within the SDP (July 2017), Clydeplan has set in place a regional spatial strategy that supports the ambitions of this region for a growing and successful population, economy and place. Clydeplan recognises the close relationship between economic activity and population change with a strong growing economy providing the basis for attracting and retaining population.</p> <p>In refreshing its Regional Spatial Strategy Clydeplan will work collaboratively with its key delivery partners and stakeholders to ensure that the strategy identifies the optimum spatial approach to delivering a successful sustainable and inclusive place which reflect the aims of the refreshed Glasgow City Region Regional Economic Strategy.</p> <p>The Spatial Strategy refresh will focus on the primary economic assets of the city region. This will also include a review of the approach to housing, vacant and derelict land, the green network, transportation and resilience to the impacts of climate change, all of which have a role in supporting the economy.</p> <p>Through its collaborative activities, Clydeplan will seek to ensure that the Regional Spatial Strategy and related delivery measures support the needs of a growing and successful city region economy.</p>	

### ➤ Glasgow City Centre

Central to the success of the city region is a successful Glasgow City Centre that fulfils its role as the core of the city region and its principal economic and cultural global asset. The City centre is the primary location within the city region for retail, office, educational, commercial, leisure, visitor and civic uses serving the whole city region as well as being a regional and national transport hub.

The Clydeplan SDP includes a 'Joint Strategic Commitment' which places Glasgow City Centre at the heart of the city region. The Joint Strategic Commitment seeks that key delivery partners and stakeholders ensure that Local Development Plans, development management decisions, and investment and resource prioritisation decisions, align to support the scale and influence of Glasgow City Centre in terms of its employment, accessibility and culture role at a national and regional level.

Glasgow City Council are promoting through the City Deal Infrastructure Fund a City Centre Public Realm Programme. The 'Avenues' programme includes improvements to the public realm; the resurfacing of streets and pavements; 'smart' infrastructure such as surface water management systems and adaptable lighting systems; trees planting; segregated cycle lanes; underground facilities and reductions in vehicle traffic.

The City Centre will also benefit from SPTs City Deal project the 'Strathclyde Bus Investment Programme'. This will see improvements in the City Centre bus hubs and interchanges and regional real-time passenger information.

The approach to the City Centre, this key asset to the city region, will be an important consideration within the refreshed Regional Spatial Strategy and related delivery activities.



- **Strategic Centres,**
- **Strategic Economic Investment Locations, and,**
- **Strategic Freight Transport Hubs**

In addition to Glasgow City Centre, Clydeplan's Spatial Development Strategy identifies a network of 23 Strategic Centres (Diagram 3), 22 Strategic Economic Investment Locations (SEILs) and 7 Strategic Freight Transport Hubs (Diagram 4), which require to be enhanced and further developed to support their long-term respective roles and functions.

Close partnership working has been undertaken with the local authorities, and a range of other key delivery partners to identify these locations and develop an informed view of the actions required to deliver and support these locations.

A number of the current City Deal Infrastructure Projects are providing direct or indirect support and investment to some of these key economic assets.

The planning context and market conditions within which this network of strategic centres and key employment locations operates, has significantly changed over the last few years. Changing consumer and lifestyle choices and other financial and technological influences have resulted in significant changes in retailing, commerce, employment, transport and logistics.

In preparing the next Regional Spatial Strategy, working collaboratively with key delivery partners and stakeholders, a review of the key economic assets within this sometimes rapidly changing context, will be undertaken. The output of this activity will be a refreshed view of the economic assets of the city region and the required place based interventions to support their continuing contribution to the delivery of a successful and inclusive city region economy.



<b>Delivery Partners</b>	Glasgow City Region/Local Authorities/Business and Commercial sector
<b>Timescale</b>	Ongoing
<b>Weblink</b>	<a href="https://www.clydeplan-sdpa.gov.uk/">https://www.clydeplan-sdpa.gov.uk/</a>

<b>SSP2</b>	<b>Support Infrastructure Delivery</b>
<b>Action</b>	<b>Clydeplan will continue to work collaboratively with infrastructure providers, Glasgow City Region, and other delivery partners and wider stakeholders, to identify strategically significant infrastructure projects required to deliver the Clydeplan spatial development strategy and Glasgow City Region Economic Strategy.</b>
<b>Clydeplan SDP Vision and Spatial Development Strategy</b>	
<p>The Planning Review signalled the need for planning authorities to increase the focus on infrastructure and delivery. The Planning (Scotland) Act 2019 (S3AC) now requires that regional partnerships provide information to assist preparation of the National Planning Framework on amongst other matters:</p> <ul style="list-style-type: none"> <li>• the infrastructure of the area (including communications, transport and drainage systems and systems for the supply of water and energy);</li> <li>• land available for the development and use of facilities for renewable sources of energy;</li> <li>• how that infrastructure is used; and,</li> <li>• the capacity of education and health services in the area.</li> </ul> <p>Over the last few years, Clydeplan has been seeking to improve its understanding and evidence base on infrastructure issues at a city region scale. Clydeplan has established collaborative working arrangements with the infrastructure providers and channels for ongoing dialogue and information exchange. Clydeplan has provided key land use data sets to a number of infrastructure providers and in turn has received data from some infrastructure providers, and is keen to spread such practices more widely.</p> <p>Clydeplan is also now a partner within the Glasgow City Region Infrastructure and Assets Portfolio led by East Renfrewshire Council. The Portfolio Group has drafted a City Region Digital Connectivity Strategy which it is to launch later this year (2019) and is committed to the preparation of a Strategic Infrastructure Investment Plan with a particular focus on utilities.</p> <p>These activities will in part fulfil the requirements of the Planning (Scotland) Act, however the scope of information on infrastructure will require to be widened to cover the range of matters listed above.</p>	
<b>Delivery Partners</b>	Infrastructure providers/Local Authorities/Glasgow City Region
<b>Timescale</b>	Ongoing
<b>Weblink</b>	<a href="https://www.clydeplan-sdpa.gov.uk/">https://www.clydeplan-sdpa.gov.uk/</a>

<b>SSP3</b>	<b>Support Housing Delivery</b>
<b>Action</b>	<b>Clydeplan and the constituent local authorities will continue to develop, and undertake activities that contribute to the delivery of new homes</b>
<b>Clydeplan SDP Policy 7: Joint Action Towards the Delivery of New Homes</b> <b>Clydeplan SDP Policy 8: Housing Land Requirement</b> <b>Clydeplan SDP Policy 9: Housing - Affordable and Specialist Provision</b>	
<p>The Clydeplan SDP has set a policy context that supports housing delivery and accords with the Vision and Spatial Development Strategy based upon a 'compact city model'.</p> <p>Housing Land Requirements and Targets for each local authority and Market Area within the Glasgow City region have been identified in order that sufficient land is made available through the Local Development Plans to meet the identified need and demand. Targets to deliver over 100,000 homes by 2029 have been set along with an indication of the land required in the longer term to maintain delivery. A clear context has been provided by Clydeplan and the Local Development Plans are now coming forward with sites and locations identified that will meet the Housing Land Requirements and deliver on the Targets.</p> <p>A significant component of the city region offer are the 13 Community Growth Areas identified in the Spatial Development Strategy. They provide approximately 20,000 new homes on mainly green field locations supported through a master-planned and design led approach. Development activity is ongoing or commencing at ten of the thirteen Community Growth Areas and a continued focus of delivery activities in these locations is anticipated including city deal infrastructure projects.</p> <p>The Policy context set by the SDP also recognises that collaborative and concerted action by all delivery partners is required to address the impediments to delivery of housing that go beyond land supply issues. For example, in the City Region there is a particular issue in respect of low levels of delivery of private sector flats in urban locations that is likely to require further public sector interventions. Examples of activities that will further support the delivery of housing include:</p> <ul style="list-style-type: none"> <li>• fostering a positive culture supportive of development delivery within public sector practices;</li> <li>• providing planning certainty through the provision of up to date development plans, Supplementary Guidance, masterplans, development briefs and planning permissions as appropriate.</li> <li>• supporting the development of innovative practices including in relation to land assembly and finance models;</li> <li>• encouraging effective use of the public sector estate;</li> <li>• liaison with key delivery partners including Homes for Scotland, house builders, Registered Social Landlords, and other delivery partners;</li> <li>• identification of impediments to delivering development and appropriate solutions, including in respect of development viability and infrastructure; and</li> <li>• exploration of the potential for large scale private renting models in the city region.</li> </ul>	
<b>Delivery Partners</b>	Glasgow City Region/Local Authorities/Housebuilding Industry
<b>Timescale</b>	Ongoing
<b>Weblink</b>	<a href="https://www.clydeplan-sdpa.gov.uk/">https://www.clydeplan-sdpa.gov.uk/</a>

## A City Region as a Successful Sustainable and Inclusive Place

<b>SSP3/1</b>	<b>Assist in the Development a Regional Strategy for Housing Delivery</b>
<b>Action</b>	<b>Clydeplan will support the Glasgow City Region in the preparation of a regional strategy for housing delivery through the provision of monitoring information, evidence, and direct support</b>
<b>Clydeplan SDP Policy 7: Joint Action Towards the Delivery of New Homes</b>	
<p>Through the collaborative endeavours of the Glasgow City Region, the Housing and Equalities Portfolio led by West Dunbartonshire Council have committed to the preparation of a regional strategy for housing delivery.</p> <p>As an active participant on the Group, Clydeplan will continue to contribute to the evidence for, and preparation of the strategy.</p>	
<b>Delivery Partners</b>	Glasgow City Region/Local Authorities/
<b>Timescale</b>	April 2020
<b>Weblinks</b>	<a href="https://www.clydeplan-sdpa.gov.uk/">https://www.clydeplan-sdpa.gov.uk/</a> <a href="http://www.glasgowcityregion.co.uk/">http://www.glasgowcityregion.co.uk/</a> <a href="http://www.glasgow.gov.uk/GCR Cabinet">http://www.glasgow.gov.uk/GCR Cabinet</a>

<b>SSP3/2</b>	<b>Assist in the development of a regional approach to the optimum use of public sector land and assets</b>
<b>Action</b>	<b>Clydeplan will support the Glasgow City Region in the preparation of a regional approach to the optimum use of public sector land and assets through the provision of monitoring information, evidence, and direct support</b>
<b>Clydeplan SDP Policy 7: Joint Action Towards the Delivery of New Homes</b>	
<p>Through the collaborative endeavours of the Glasgow City Region, the Land Use and Sustainability Portfolio led by East Dunbartonshire Council have committed to reaching development of a regional approach to the optimum use of public sector land and assets.</p> <p>As an active participant on the Group, Clydeplan will continue to provide ongoing support for these activities.</p>	
<b>Timescale</b>	March 2020
<b>Delivery Partners</b>	Glasgow City Region/Homes for Scotland/Housebuilding Industry
<b>Weblink</b>	<a href="http://www.clydeplan-sdpa.gov.uk/">www.clydeplan-sdpa.gov.uk/</a>



<b>SSP3/3</b>	<b>Assist in the preparation of a housing evidence including the Housing Need and Demand Assessment</b>
<b>Action</b>	<b>Clydeplan will continue to support the preparation of the Housing Need and Demand Assessment (HNDA) and related joint working around housing evidence and delivery, on behalf of the Glasgow City Region Housing Market Partnership comprising lead planning and housing officers from the local authorities.</b>
<b>Clydeplan SDP Policy 7: Joint Action Towards the Delivery of New Homes</b> <b>Clydeplan SDP Policy 8: Housing Land Requirement</b> <b>Clydeplan SDP Policy 9: Housing - Affordable and Specialist Provision</b>	
<p>The policy landscape for planning for the housing is currently in flux. Previously there was a requirement to prepare a HNDA to inform a SDP and the role of the SDP was clear. However, the Planning (Scotland) Act 2019 has removed the requirement to prepare a SDP and introduced a requirement for Regional Spatial Strategies which will not however form part of the development plan. Also new, the NPF will now have a role in setting targets for the use of land for housing. Local Housing Strategies remain a requirement under the Housing (Scotland) Act 2001 and are to be informed by a HNDA, and refreshed Local Housing Strategy guidance is in preparation. New guidance on HNDA preparation is also anticipated following enactment of the Planning (Scotland) Act 2019, however at this stage the specific role of a Regional Spatial Strategy in planning for housing is not clearly defined.</p> <p>Irrespective of the foregoing, Clydeplan will continue to play a central and coordinating role in respect of housing evidence and development of the policy context for housing delivery.</p> <p>Annual monitoring of the land supplies and related housing trends and delivery issues is ongoing with the most recent land supply reports available online. In preparing the land audits Clydeplan engages closely with Homes for Scotland with whom it has an agreed Concordat.</p> <p>The HNDA refresh will provide an invaluable new evidence base for deriving the housing challenges covering matters including the economic context, house price trends, housing stock issues and housing need including homelessness and specialist provisions.</p> <p>Clydeplan will continue to work collaboratively with the Glasgow City Region Housing Market Partnership, the Glasgow City Region Housing and Equalities Portfolio and wider housing stakeholders, in order that all stakeholders can develop an improved understanding of the issues. This knowledge and best practice sharing, will inform the preparation of a Glasgow City Region Housing Strategy for Delivery and stakeholders other policy and delivery related activities including Local Housing Strategy and Local Development Plan preparation.</p>	
<b>Timescale</b>	
<b>Delivery Partners</b>	Glasgow City Region Housing Market Partnership/wider housing stakeholders
<b>Weblink</b>	<a href="http://www.clydeplan-sdpa.gov.uk/">www.clydeplan-sdpa.gov.uk/</a>



## City Region as a Low Carbon Place

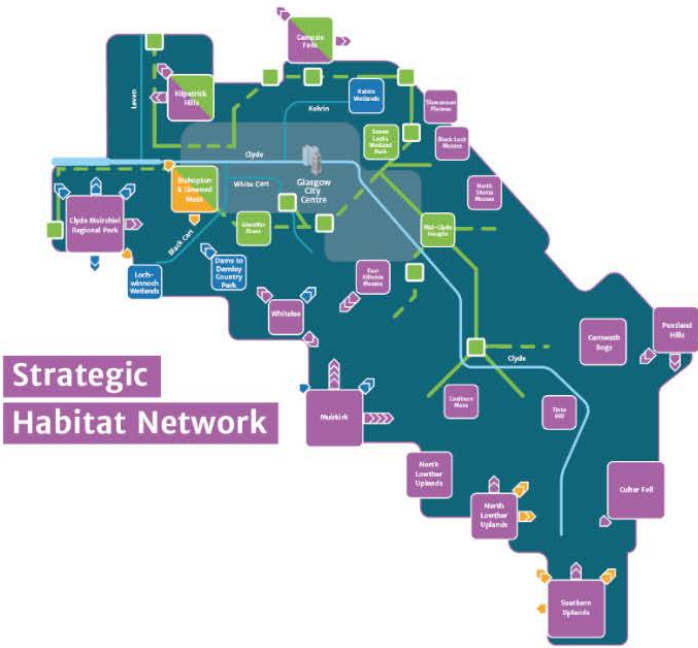
<b>LCP1</b>	<b>Support the development and implementation of a city region Climate Change Adaptation Strategy and Action Plan</b>
<b>Action</b>	<b>Clydeplan will continue to work collaboratively with the Climate Ready Clyde Partnership and wider stakeholders to assist in the development of a Regional Climate Change Adaptation Strategy and related Action Plan, with a particular aim on ensuring a strong planning framework which incentivises adaptation to the range of climate impacts.</b>
<b>Clydeplan SDP Policy 10: Delivering Heat and Electricity</b> <b>Clydeplan SDP Policy 11: Planning for Zero Waste</b> <b>Clydeplan SDP Policy 12: Green Network and Green Infrastructure</b> <b>Clydeplan SDP Policy 13: Forestry and Woodland</b> <b>Clydeplan SDP Policy 14: Green Belt</b> <b>Clydeplan SDP Policy 15: Natural Resource Planning</b> <b>Clydeplan SDP Policy 16: Improving the Water Quality Environment and Managing Flood Risk and Drainage</b>	
<p>Over the last few decades the effects of climate change are becoming more apparent. It has become warmer and wetter and there has been an increase in rainfall, especially in winter, with more heavy downpours and more frequent flooding incidents. Sea levels are also rising, with estimates in the Firth of Clyde of between 0.5-1 m by the end of the century. Tackling these issues is of vital importance in ensuring that the city region can continue to prosper and thrive. The response of Clydeplan and Climate Ready Clyde are borne out of that concern. As well as amplifying existing hazards, new challenges such as more frequent and severe heatwaves are projected to become more common.</p> <p>Along with Sniffer, the Green Network, Glasgow City Council and the Scottish Government, Clydeplan played a key role in establishing the "Climate Ready Clyde" Partnership, Clydeplan supported the establishment of Climate Ready Clyde and supports its executive group, as well as providing direct administrative and hosting support.</p> <p>Climate Ready Clyde has assessed the risks and opportunities of climate change and in April 2019 it released a full Climate Risk and Opportunity Assessment for Glasgow City Region. The Assessment sets out 67 climate change risks and opportunities facing the area, based on current emissions projections.</p> <p>These risks are spatially different, with the coast at risk of sea level rise, central Glasgow more exposed to future heatwaves as a result of the urban heat island effect.</p> <p>Ensuring a coherent planning frameworks which strategically incentivizes adaptation in new development at national, regional and local levels, in a cost-effective way, whilst also recognizing the varying environmental hazards across the City Region will be a significant challenge.</p> <p>Clydeplan's role is in setting a relevant policy agenda, particularly in relation to the SDP's Spatial Development Strategy and through in collaboration with key stakeholders collaborative to influence and develop appropriate policy responses and activities.</p>	
<b>Delivery Partners</b>	<b>Climate Ready Clyde</b> Clydeplan/ GCV GNP/ Sniffer/ MGSDP/ Scottish Government/ Local Authorities/ GCV Green Network Partnership/ Key Agencies
<b>Timescale</b>	2020
<b>Weblink</b>	<a href="http://climatereadyclyde.org.uk/">http://climatereadyclyde.org.uk/</a>

## City Region as a Natural Resilient Place

<b>NRP1</b>	<b>Support the Implementation of the Green Network Blueprint</b>
<b>Action</b>	<b>Clydeplan will continue work collaboratively to support the delivery of the Green Network Strategic Delivery Areas identified in the SDP and now reflected in the Blueprint.</b>
<b>Clydeplan SDP Policy 12: Green Network and Green Infrastructure</b>	
<p>As articulated within Clydeplan's Vision and Spatial Development Strategy and Policy 12, Green Network and Green Infrastructure, the integration of the Green Network within new and existing development is a policy priority to address and support a range of policy themes. These include placemaking, supporting the economy, health and well-being, access to open space, with the greening of vacant and derelict land as a high priority, particularly in disadvantaged communities.</p> <p>Following on from the identification of Strategic Delivery Areas within Clydeplan, the Green Network Partnership has now developed a 'Blueprint' which aims to support the creation of a strategic Green Network for the benefit of people and wildlife in Glasgow City Region.</p> <p>The Blueprint incorporates the fundamental functions of a Green Network, namely an Access Network - facilitating the off-road movement of people between communities through greenspace and a Habitat Network - facilitating the movement of wildlife through the landscape.</p> <p>The Blueprint identifies for both Networks:</p> <ul style="list-style-type: none"> <li>• existing Green Network assets</li> <li>• where protection and enhancements are required</li> <li>• where there are gaps in the networks</li> <li>• opportunities to address those gaps</li> </ul> <p>and will help target resources and effort effectively, creating and enhancing the right Green Network component in the right place for most benefit.</p> <p>Clydeplan chairs the Glasgow Clyde Valley Green Network Partnership and is also a member of the Central Scotland Green Network (CSGN) Trust Board. The CSGN is identified as a National Development in NPF3 and aims to transform Central Scotland into a place where the environment adds value to the economy and where people's lives are enriched by its quality.</p> <p>Clydeplan will continue to support the activities of the Glasgow Clyde Valley Green Network Partnership and CSGN, and will work with other key stakeholders and delivery partners in fulfilment of the implementation of the Green Network Blueprint including through local development plan activities.</p>	
<b>Delivery Partners</b>	<b>Glasgow Clyde Valley Green Network Partnership/Local Authorities/CSGNT</b>
<b>Timescale</b>	Ongoing
<b>Weblinks</b>	<a href="https://npfactionprogramme.com/national-developments/06-the-central-scotland-green-network/">https://npfactionprogramme.com/national-developments/06-the-central-scotland-green-network/</a> <a href="http://www.centalscotlandgreennetwork.org/">www.centalscotlandgreennetwork.org/</a> <a href="https://www.gcvgreennetwork.gov.uk/what-we-do/our-blueprint">https://www.gcvgreennetwork.gov.uk/what-we-do/our-blueprint</a> <a href="http://www.clydeplan-sdpa.gov.uk/docman/current-plan-july-2017-background-reports/69-background-report-11-green-network">www.clydeplan-sdpa.gov.uk/docman/current-plan-july-2017-background-reports/69-background-report-11-green-network</a>

## City Region as a Natural Resilient Place

## Green Network Blueprint



## City Region as a Natural Resilient Place

<b>NRP2</b>	<b>Preparation of Supplementary Guidance for Forestry and Woodland</b>
<b>Action</b>	<b>Clydeplan sets a policy context to support appropriate forestry and woodland planting and minimise its loss and will prepare Supplementary Guidance in support of those aims.</b>
<b>Clydeplan SDP Policy 13: Forestry and Woodland</b>	
<p>Scottish Forestry was established as the new executive agency of the Scottish Government as a result of the Forestry and Land Management (Scotland) Act 2018. The new agency supports the delivery of the Scottish Government's priorities for forestry in Scotland through the new Scottish Forestry Strategy 2019-2029. The preparation of new Supplementary Guidance for Forestry and Woodland was a requirement of the Scottish Minister's approval of the Clydeplan SDP (July 2017) and when complete this will replace the Forestry and Woodland Strategy (Background Report 12). The Scottish Forestry Strategy and developments in the climate change agenda have provided an opportunity within the Clydeplan area to deliver the first Forestry and Woodland Supplementary Guidance framed within this new policy context.</p> <p>In addition to the framework set by Policy 13 on Forestry and Woodland, Background Report 12 Forestry and Woodland Strategy and the related Spatial Framework ensure that forestry and woodland objectives are reflected in local development plans and associated action programmes and that development decisions align with the SDPs Strategy objectives.</p> <p>To ensure the successful delivery of the Forestry and Woodland Supplementary Guidance, and to facilitate appropriate consideration of the updated policy context, a collaborative approach has been taken through the formation of a partnership including Clydeplan, local authorities, Glasgow Clyde Valley Green Network Partnership, Scottish Natural Heritage and Scottish Forestry.</p>	
<b>Delivery Partners</b>	Local authorities/ Glasgow Clyde Valley Green Network Partnership/ Scottish Natural Heritage/ Scottish Forestry
<b>Timescale</b>	Ongoing
<b>Weblinks</b>	<a href="http://www.clydeplan-sdpa.gov.uk/docman/current-plan-july-2017-background-reports/70-background-report-12-forestry-and-woodland-strategy">www.clydeplan-sdpa.gov.uk/docman/current-plan-july-2017-background-reports/70-background-report-12-forestry-and-woodland-strategy</a> <a href="http://scotland.forestry.gov.uk/supporting/strategy-policy-guidance/forestry-strategy">http://scotland.forestry.gov.uk/supporting/strategy-policy-guidance/forestry-strategy</a> <a href="https://forestry.gov.scot/publications/standards-regulations-and-incentives/control-of-woodland-removal/the-planning-system/96-the-right-tree-in-the-right-place-planning-for-forestry-and-woodlands">https://forestry.gov.scot/publications/standards-regulations-and-incentives/control-of-woodland-removal/the-planning-system/96-the-right-tree-in-the-right-place-planning-for-forestry-and-woodlands</a>

## City Region as a Natural Resilient Place

<b>NRP3</b>	<b>Support the preparation of a regional vacant and derelict land strategy</b>
<b>Action</b>	<b>Clydeplan, in collaboration with stakeholders including the Scottish Vacant and Derelict Land Taskforce, will assist in the preparation of a regional vacant and derelict land strategy which will assist in identifying priority areas for investment.</b>
<b>Clydeplan SDP Vision and Spatial Development Strategy</b>	
<p>Clydeplan provides a policy context that seeks, through delivery of its Vision and Spatial Development Strategy to deliver a 'compact city model focused around the Development Corridor, addressing the challenges and opportunities of vacant and derelict land through measures including:</p> <ul style="list-style-type: none"> <li>• provision of new housing and other development at higher densities;</li> <li>• increased provision of green infrastructure;</li> <li>• improvements in active travel; and,</li> <li>• addressing severance including the reconnection of adjacent communities located near the River Clyde.</li> </ul> <p>The Glasgow City Region Regional Economic Strategy and Action Plan, includes an action to prepare a regional vacant and derelict land strategy and Clydeplan will continue to play an active role in supporting this activity.</p>	
<b>Delivery Partners</b>	Scottish Vacant and Derelict Land Taskforce/ Glasgow City Region/Glasgow Clyde Valley Green Network Partnership
<b>Timescale</b>	Ongoing
<b>Weblink</b>	<a href="https://landcommission.gov.scot/notsoprettyvacant/">https://landcommission.gov.scot/notsoprettyvacant/</a>

## City Region as a Connected Place

<b>CP1</b>	<b>Support the preparation and delivery of the Regional Transport Strategy and Regional Transport Plan</b>
<b>Action</b>	<b>Clydeplan will work collaboratively to support the preparation of the SPT Regional Transport Strategy and GCR Regional Transport Plan</b>
<b>Clydeplan SDP Policy 17: Promoting Sustainable Transport</b> <b>Clydeplan SDP Policy 18: Strategic Walking and Cycling Network</b> <b>Clydeplan SDP Policy 19: Glasgow Airport and Sustainable Transport Access</b> <b>Clydeplan SDP Policy 20: High Speed Rail</b> <b>Clydeplan SDP Spatial Development Strategy and Vision</b>	
<p>Clydeplan and the Strathclyde Partnership for Transport have entered into a Concordat demonstrating the close collaborative working arrangements between the two organisations whose goals and ambitions around delivering a successful and well connected city region, are closely intertwined.</p> <p>Clydeplan continue to attend the regular Strathclyde Partnership for Transport Council Liaison Group meetings and the Clydeplan Manager sits on the Project Board of the Regional Transport Strategy and therefore plays a key role within the Strategy's development.</p> <p>During 2018/19, the Strathclyde Partnership for Transport have undertaken demographic analysis; and an early engagement consultation with the public and stakeholders with regard to identification of key issues and the vision, outcomes and objectives.</p> <p>Clydeplan has worked closely with the Strathclyde Partnership for Transport in developing the early context for the Regional Transport Strategy and the evidence used in its preparation will also be used to inform the Regional Spatial Strategy.</p> <p>Clydeplan is also a partner organisation within the Glasgow City Region Transport and Connectivity Portfolio who have committed to preparation of a city region transport plan.</p>	
<b>Timescale</b>	December 2021
<b>Delivery Partners</b>	<b>Strathclyde Partnership for Transport/ Glasgow City Region</b>
<b><u>Weblinks</u></b>	<a href="#">Strathclyde Partnership for Transport: Strategic Regional Transport Strategy and Delivery Plan</a> <a href="http://www.glasgowcityregion.co.uk/">http://www.glasgowcityregion.co.uk/</a>

## City Region as a Connected Place

<b>CP3</b>	<b>Support increasing levels of active travel</b>
<b>Action</b>	<b>Clydeplan will continue to collaborate with the SPT and key stakeholders in the identification of support measures and interventions to enhance levels of active travel.</b>
<b>Clydeplan SDP Policy 17: Promoting Sustainable Transport</b> <b>Clydeplan SDP Policy 18: Strategic Walking and Cycling Network</b> <b>Clydeplan SDP Spatial Development Strategy and Vision</b>	
<p>In support of the Scottish Government's target to reduce emissions, modal shift from private to public transport and increasing active travel through the creation and improvement of walking and cycling networks, has an important role to play. A strong active travel offer is also seen as an asset to the city region in terms of tourism and the attractiveness of the area to new investors.</p> <p>Working collaboratively, the SPT and Clydeplan have established a Regional Active Travel Group comprising the local authorities of the SPT area and the Glasgow Clyde Valley Green Network Partnership. This group, is co-chaired by the Strathclyde Partnership for Transport and Clydeplan who jointly provide the secretariat support. The Group has established a remit and has embarked on and progressed work, to identify a network of regional active travel routes for inclusion within the emerging Regional Transport Strategy, and which additionally will form the basis of a regional network for future funding bids for example, Transport Scotland's Strategic Transport Projects Review. The work of the Glasgow Clyde Valley Green Network Partnership on their Blueprint's Access Network strongly supports and complements this activity.</p> <p>In undertaking this activity, an inaugural workshop was convened as well as a focused workshop session around mapping which was supported by Clydeplan's GIS technical support. The development of a regional network will be further advanced during 2019.</p>	
<b>Timescale</b>	Ongoing
<b>Delivery Partners</b>	<b>Clydeplan/ Strathclyde Partnership for Transport/</b> Transport Scotland/ Sustrans
<b>Weblinks</b>	<a href="http://npfactionprogramme.com/national-developments/08-national-long-distance-cycling-and-walking">http://npfactionprogramme.com/national-developments/08-national-long-distance-cycling-and-walking</a> <a href="http://www.clydeplan-sdpa.gov.uk/docman/current-plan-july-2017-background-reports/72-background-report-14-active-travel-strategic-walking-and-cycling-network">www.clydeplan-sdpa.gov.uk/docman/current-plan-july-2017-background-reports/72-background-report-14-active-travel-strategic-walking-and-cycling-network</a>



## Delivering the Strategy

<b>DEL1</b>	<b>Collaborate for Delivery</b>
<b>Action</b>	<b>Clydeplan will work collaboratively with key delivery stakeholders to implement the Regional Spatial Strategy Vision</b>
<b>Clydeplan SDP Vision and Spatial Development Strategy</b>	
<p>The city region has a regional spatial strategy in place in the form of the Clydeplan SDP which provides long term planning certainty, assists in the coordination of investment and infrastructure provision, and enables appropriate development proposals to come forward. The strategy aims to align with other relevant strategies but also to influence delivery activities.</p> <p>Clydeplan has no direct delivery role, therefore implementing the Plan Strategy relies on decisions being taken forward through other activities including: local authority development plans; masterplans; development management decisions; community planning; and through the alignment of investment and resources by key delivery partners stakeholders including the wider public sector and development industry.</p> <p>Clydeplan's Collaborative Delivery Model referenced in the introduction, describes in diagrammatic form, how the harnessing of evidence and the development and agreement of priorities, provides the foundation of Clydeplan's role in working collaboratively with delivery partners to realise the Plan's Vision and the delivery of outcomes.</p> <p>Through ongoing joint working, Clydeplan will continue to operate in this collaborative manner to influence delivery activities. This will include a collaborative approach to the regional spatial strategy refresh referred to in Action V2 earlier. In addition, Clydeplan will continue to:</p> <ul style="list-style-type: none"> <li>• undertake relevant monitoring and evidence gathering to provide a common understanding of the issues;</li> <li>• work collaboratively with the local planning authorities in respect of local development planning and development management activities;</li> <li>• engage with and influence other relevant strategy preparation and delivery activities beyond spatial planning for example in respect of transport, health, and infrastructure; and,</li> <li>• Work collaboratively with the Glasgow City region.</li> </ul>	
<b>Delivery Partners</b>	<b>Glasgow City Region/Local Authorities/Scottish Government</b>
<b>Timescale</b>	Ongoing
<b>Weblinks</b>	<a href="http://www.clydeplan-sdpa.gov.uk/sdp/development-plan-scheme-and-participation-statement">www.clydeplan-sdpa.gov.uk/sdp/development-plan-scheme-and-participation-statement</a> <a href="https://beta.gov.scot/policies/planning-architecture/reforming-planning-system/">https://beta.gov.scot/policies/planning-architecture/reforming-planning-system/</a>



**October 2019**