

Johnstone & Linwood

Local Profile: Background Information



#ourRenfrewshire

 Renfrewshire
Community Planning
Partnership

Population

How many people live here?

24,769 people in total live in the area and below are the main concentrations of population:

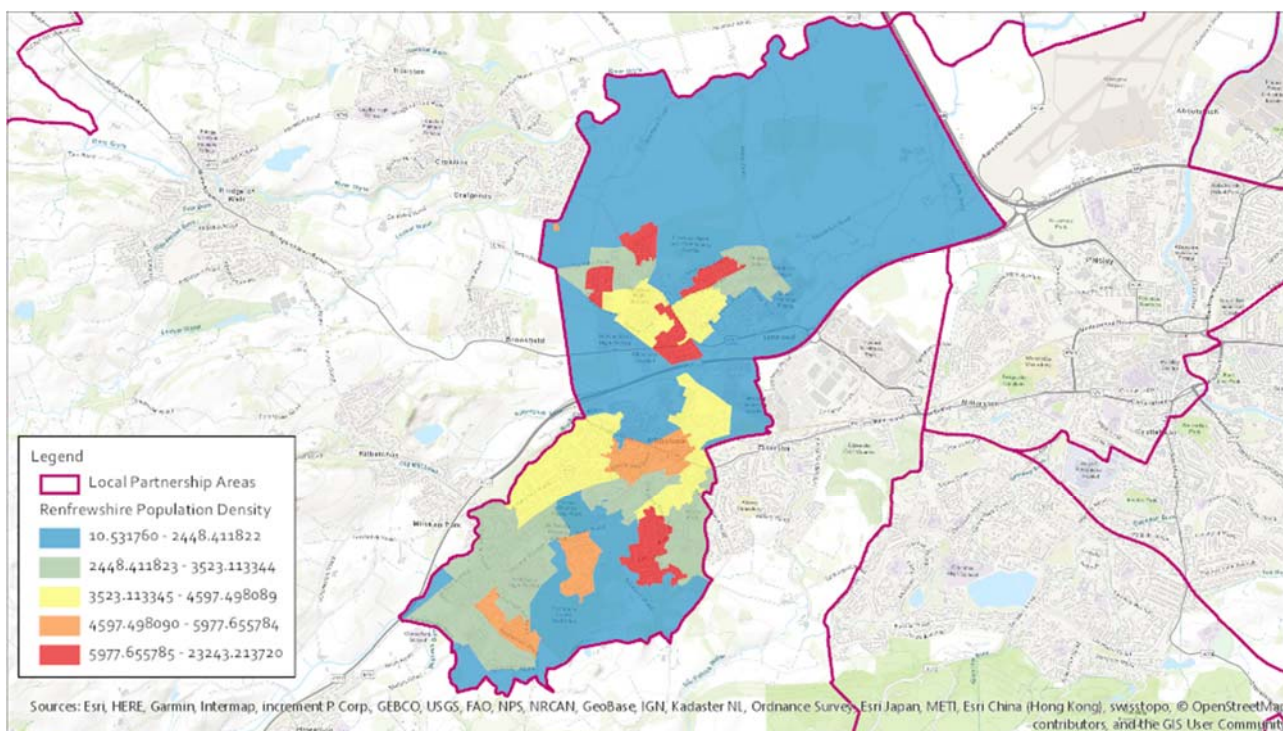
JOHNSTONE	16084
LINWOOD	8685

What age are people living here?

	Under 16	Aged 16-64	Aged 65+
Linwood North	21%	62%	18%
Linwood South	17%	59%	24%
Johnstone North East	15%	63%	22%
Johnstone North West	18%	65%	17%
Johnstone South East	16%	63%	21%
Johnstone South West	22%	62%	16%
Overall	19%	62%	19%

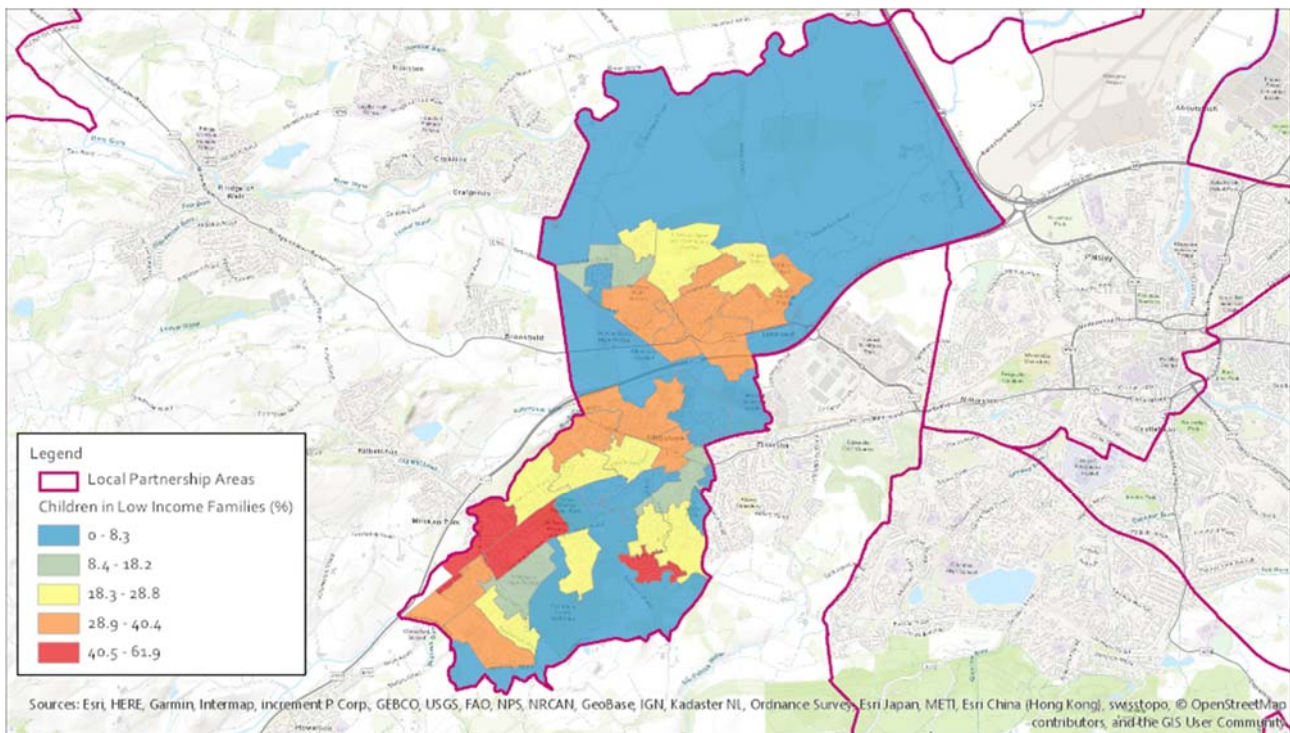
Please note: Because of rounding, figures may not add up to 100%

Population Density



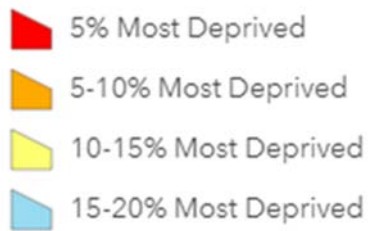
Children in Low Income Families

As recorded by the Scottish Index of Multiple Deprivation



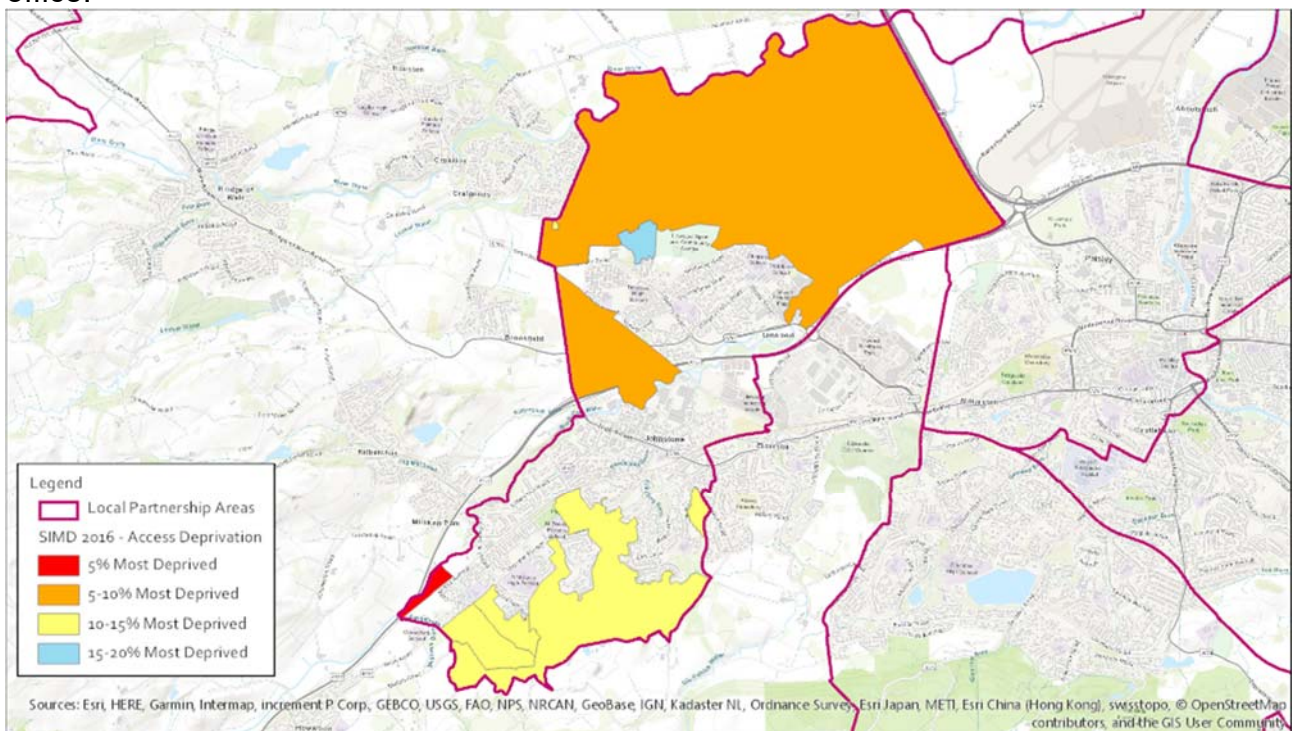
The tables below are also taken from the Scottish Index of Multiple Deprivation and show other dimensions of deprivation: access, health and crime. The key below applies to the following three tables.

SIMD 2016 - Access Deprivation



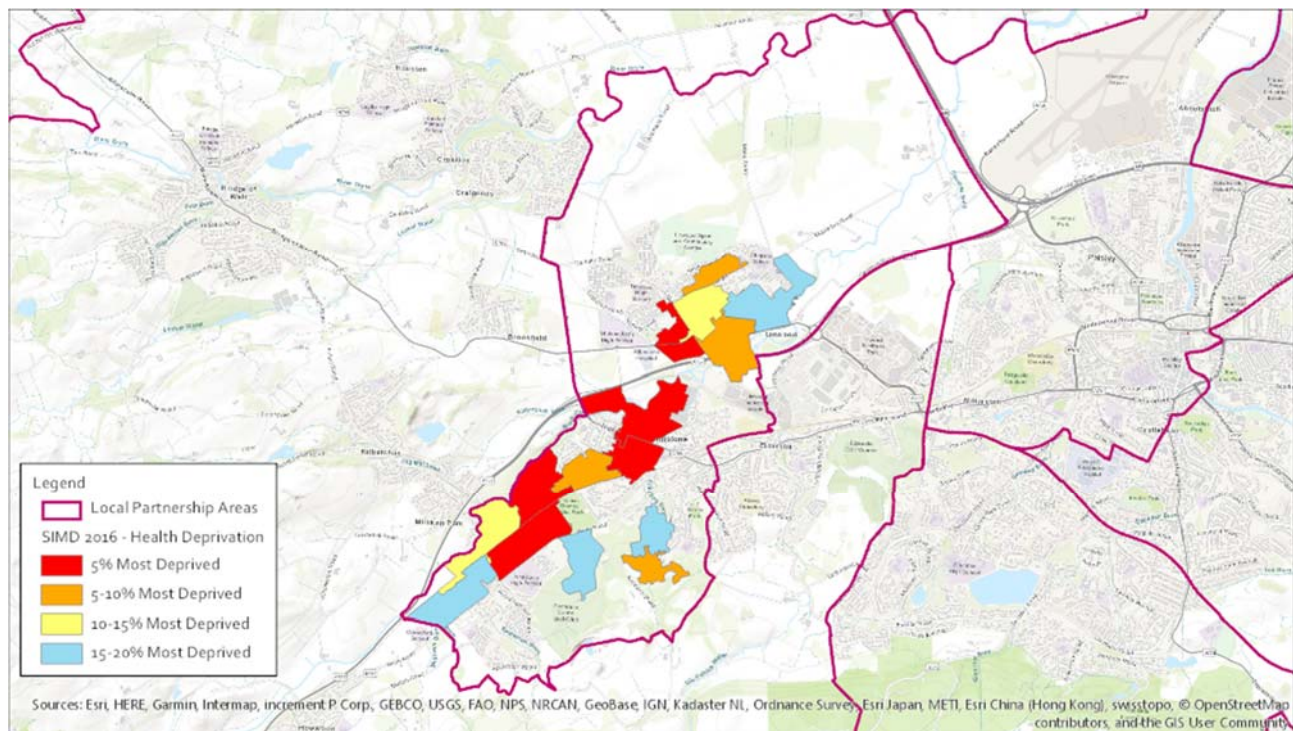
Access Deprivation

This measure includes drive time to GP, to retail centre, to petrol station, to primary and secondary schools, to post office and public transport time to GP, to retail centre, to post office.



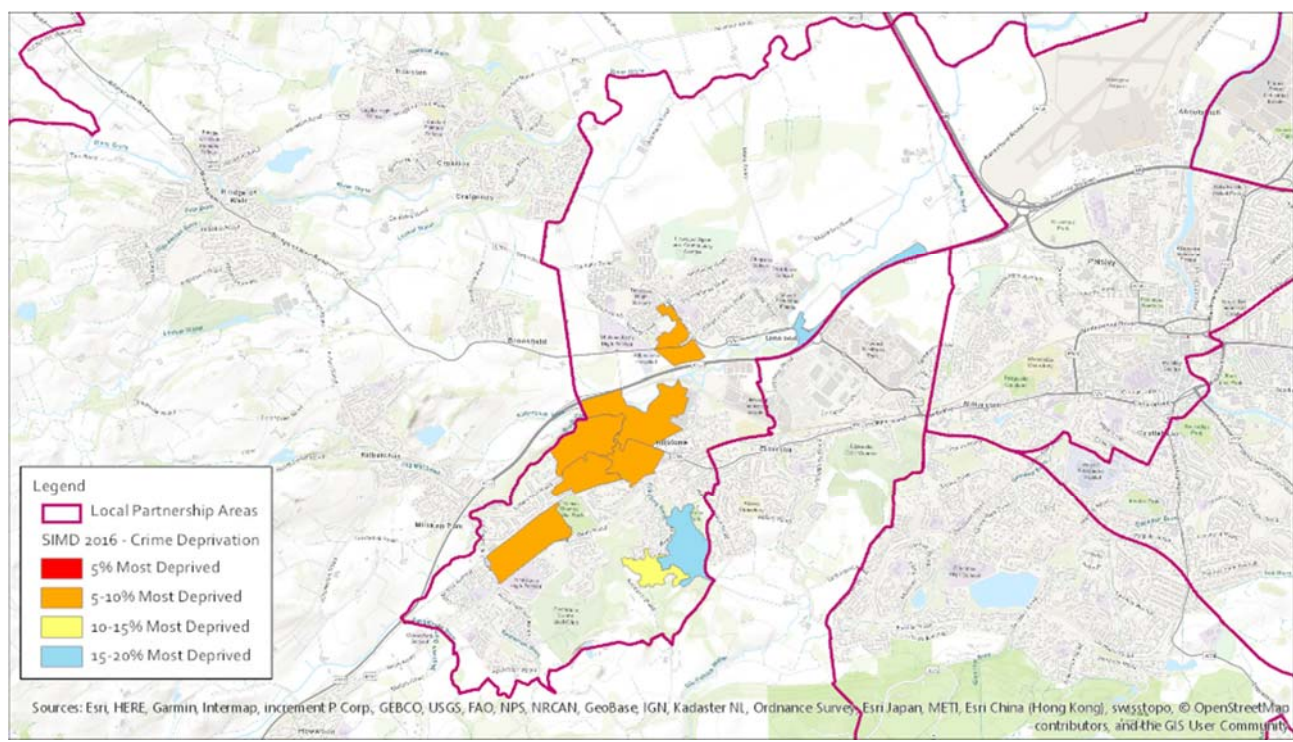
Health Deprivation

This measure includes the Standardised Mortality Ratio; Hospital stays related to alcohol misuse; Hospital stays related to drug misuse; Comparative Illness Factor; Emergency stays in hospital; Proportion of population being prescribed drugs for anxiety, depression or psychosis; and Proportion of live singleton births of low birth weight.



Crime Deprivation

This measure includes Domestic house breaking, Drug offences, Common assault, Crimes of violence, Vandalism and Sexual offences.



Place Standard, 2017

47 residents from Linwood and Johnstone Local Partnership area responded to Our Renfrewshire, Place Standard Consultation in 2017. 70% of the respondents were female, 30% were male, with most respondents of working age.

Roads came out top, as the term mentioned most when thinking about priorities for the area. The wordle below shows the terms that were most frequently mentioned in the largest text, when discussing priorities for the area.



Most positive responses

Respondents felt most strongly positive about the following themes:



Facilities and amenities

Identity and belonging

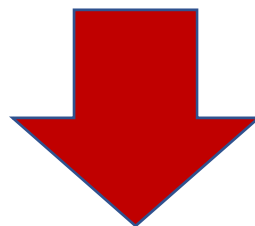
Feeling safe

Least positive responses

Respondents felt negative about the following themes:

Moving around

Traffic and parking



Mixed responses

Most mixed responses were received about public transport; streets and spaces; natural space; play and recreation; work and local economy; housing and community; social contact; care and maintenance; and influence and sense of control.

Children & Education

Secondary Schools

Linwood High School (non denominational)

St Benedict's High School (denominational)

Johnstone High School (non denominational)

Primary Schools

East Fulton Primary School (non denominational)

Our Lady of Peace Primary School (denominational)

Woodlands Primary School (non denominational)

Thorn Primary School (non denominational)

St Margaret's Primary School (denominational)

Auchenlodment Primary School (non denominational)

St David's Primary School (denominational)

Fordbank Primary School (non denominational)

St Anthony's Primary School (denominational)

Riverbrae School (Additional Support Needs)

Nurseries

3 Bears Nursery (private and voluntary sector)

East Fulton Nursery (local authority)

Our Lady of Peace Nursery (local authority)

Linwood Community Child Care (private and voluntary sector)

Stepping Stones Nursery (private and voluntary sector)

St Margaret's Nursery (local authority)

Auchenlodment Nursery (local authority)

West Johnstone Pre-Five Centre (local authority)

Spateston Pre-Five Centre (local authority)

Parks and Play Areas

Playpark to East of Kilbrennan Road
Playpark to South of Oxford Drive
Playpark to North of Nos 14 to 16, Cowal Drive
Linwood Park
King George V Memorial Playing Fields
Playpark at John Lang Street
Playpark at Dimity Street
Playpark at Willow Drive
Thomas Shanks Park
Play Parks, Elm Drive
Playpark to East of Woodlands Crescent
Playpark at Bruce Avenue
Playpark at Sandyflats
Playpark to East of Hallhill Road

Health Resources

GP Practices

Linwood Health Centre
Riverview Medical Centre
Ravenswood Surgery
Ludovic Medical Practice
Westfield Medical Practice

Pharmacies & Dentists

Bridge Street Dental Surgery
Linwood Dental Care
Lloyds Pharmacy
MacArthur & O'Toole Dental Surgery
Boots Pharmacy
Collins & Forrest, Dental Surgery
Penmans Pharmacy
Boots Pharmacy
Johnstone Dental Practice
P A Penney Dental
Church Street Dental Practice
The Co-operative Pharmacy
Reach Pharmacy
Spateston Pharmacy

Care Homes, Extra Care & Sheltered Housing

Care Homes

Lancefield Nursing Home (16 units)
Ranfurly Care Home (60 units)
Cochrane Care Home (57 units)

Extra Care, Sheltered & Amenity Housing

Arnott Gardens (26 units)
Mill Place (16 units)
Bridge Street (8 units)
Walkinshaw Court (15 units)
Farrier Court/Walkinshaw Street (31 units)
Houston Court (14 units)

Bankside Avenue (29 units)
Banktop Court (25 units)
The Oaks (36 units)

Adult Health and Wellbeing across Renfrewshire

- 80% of people say their health is good or very good.
- 15% of people say they smoke, 10% drank alcohol at least twice per week.
- 7% of people feel isolated from family and friends.
- 46% say they have at least 5 portions of fruit and veg per day.
- 47% of people do 150 minutes of exercise per week.