

Renfrewshire Economic Development Newsletter – January 2017

The Claimant Count

The claimant count is a measure of the number of people with live claims for the principal reason of being unemployed. Previously, Job Seeker's Allowance (JSA) was the main unemployment benefit. Now, Universal Credit (UC) is included.

These new experimental statistics that now combine JSA and UC stretch back to January 2013 when Universal Credit started to roll out in pilot areas. Although experimental, this new claimant count is now the new standard. By contrast, the previous norm of using purely JSA claimants is no longer the official claimant count and is being slowly phased out.

Employment and unemployment (Oct 2015-Sep 2016)

	Renfrewshire (Numbers)	Renfrewshire (%)	Scotland (%)	Great Britain (%)
All People				
Economically Active†	89,100	78.8	76.7	77.8
In Employment†	84,800	74.8	72.8	73.9
Employee‡	76,400	67.5	64.2	63.1
Self Employed‡	8,300	7.1	8.2	10.4
Unemployed (Model-Based)§	4,700	5.2	4.9	4.9
Males				
Economically Active†	44,800	80.4	81.2	83.1
In Employment†	42,200	75.5	76.7	78.8
Employee‡	36,200	65.0	65.2	64.4
Self Employed‡	5,800	10.2	11.1	14.0
Unemployed§	2,700	5.9	5.4	5.1
Females				
Economically Active†	44,300	77.2	72.4	72.6
In Employment†	42,600	74.2	69.1	69.0
Employee‡	40,200	70.0	63.2	61.7
Self Employed‡	2,500	4.2	5.4	6.9
Unemployed§	1,700	3.8	4.4	4.8

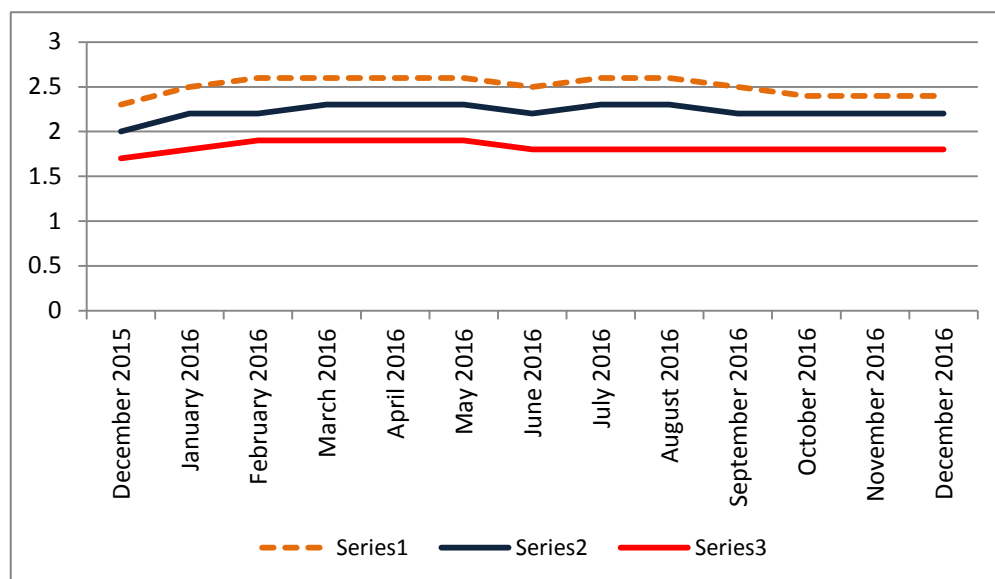
Source: ONS annual population survey

December 2016: Claimant Count Figures

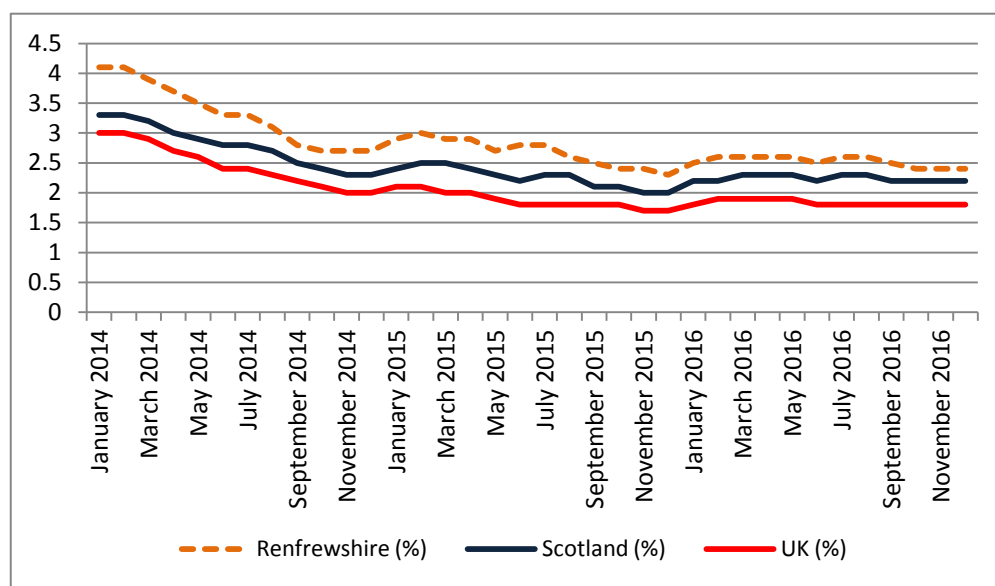
Claimant Count: All Ages (16+)

- The claimant count rate for Renfrewshire for December 2016 was 2.4%, with claimants totalling 2,695.
- This month the rate has marginally decreased.
- The rate this time last year was 2.3%.
- Renfrewshire is currently ranked 22nd out of 32 local authorities for unemployment.

All Ages(16+): Claimant count rate 2015-2016



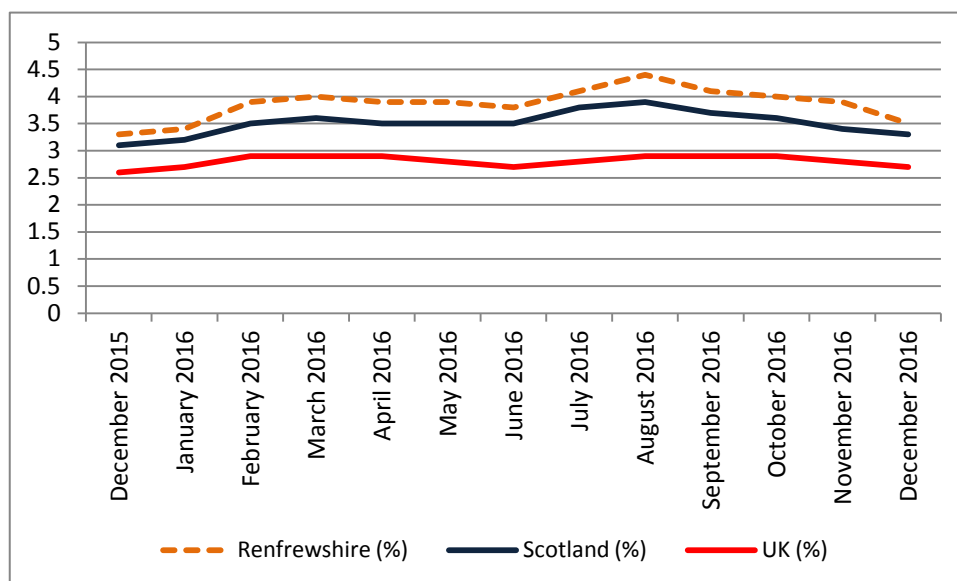
All Ages(16+): Claimant count rate 2014-2016



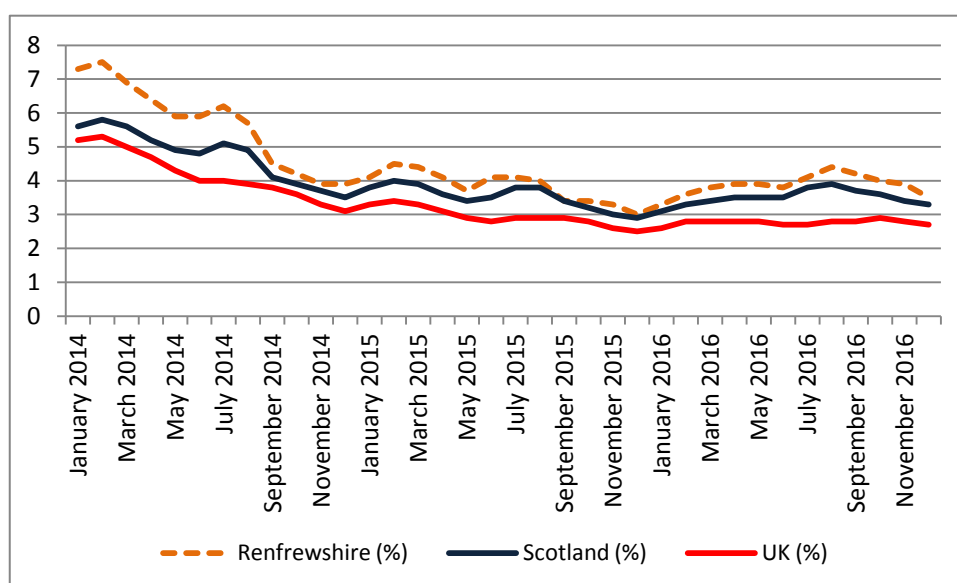
Claimant Count: Youth (18-24)

- The claimant count rate for Renfrewshire for December 2016 was 3.5% with claimants totalling 530.
- This month the rate has decreased, by 0.4%.
- The rate this time last year was 3.3%
- Renfrewshire is currently ranked 19th out of the 32 local authorities.

Youth (18-24): Claimant count rate 2015-2016



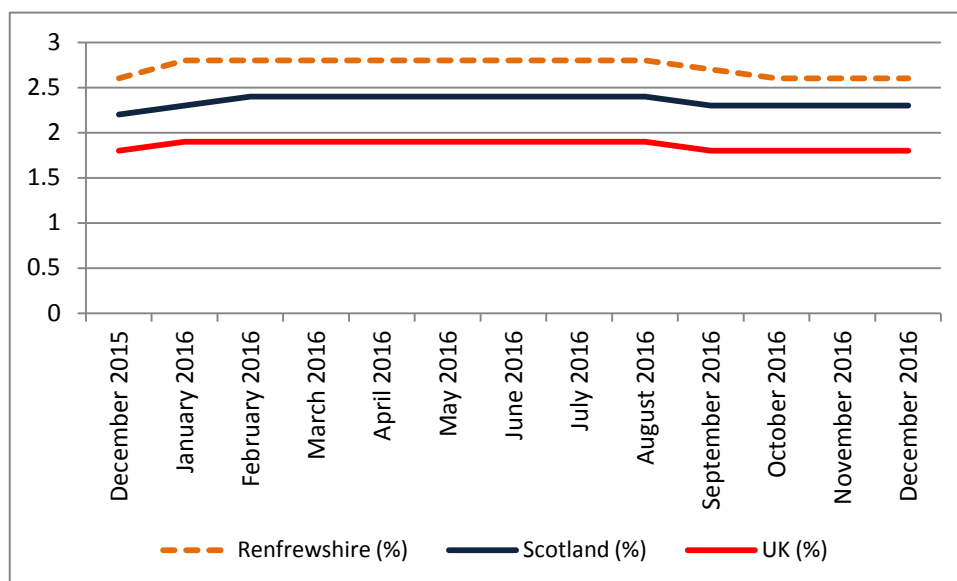
Youth (18-24): Claimant count rate 2014-2016



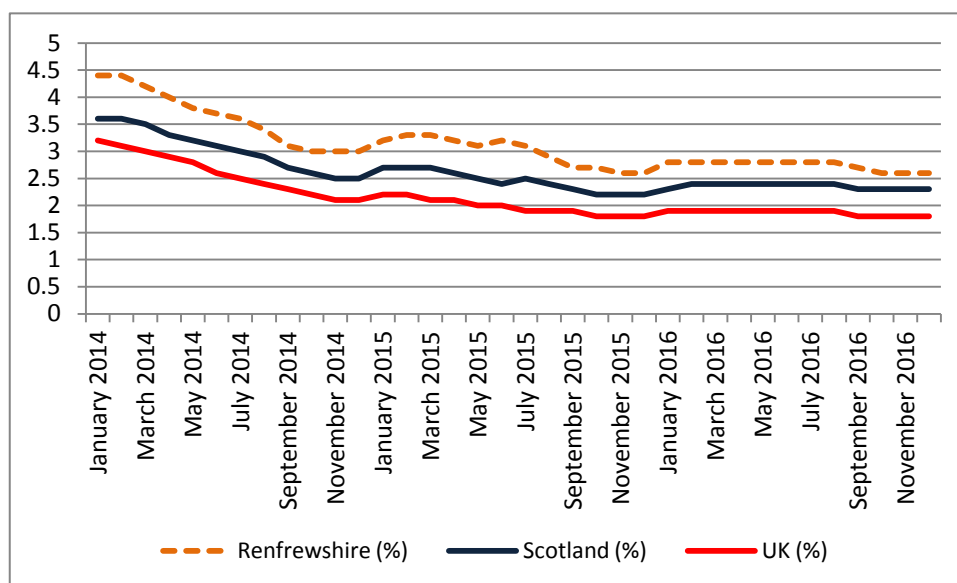
Claimant Count: 25-49

- The claimant count rate for Renfrewshire for December 2016 was 2.6% with claimants totalling 1,465.
- This month the rate has marginally decreased.
- The rate this time last year was 2.7%

25-49: Claimant count rate 2015-2016



25-49: Claimant count rate 2014-2016



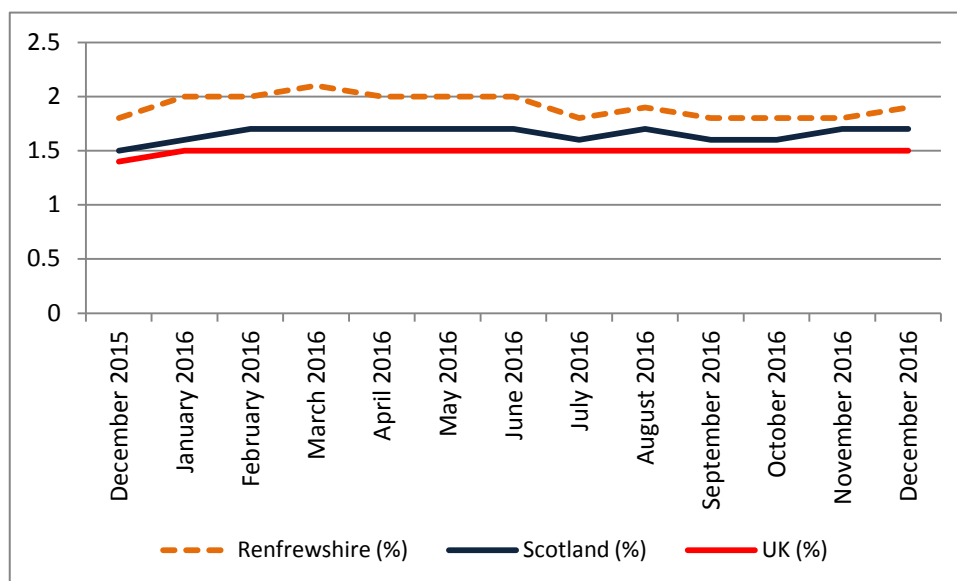
Claimant Count: 50+

- The claimant count rate for Renfrewshire for December 2016 was 1.9 with claimants totalling 665.
- This month the rate has marginally increased, by 0.1%.
- The rate has increased by 0.1% from this time last year at 1.8%

Source: ONS claimant count by sex and age

Note: % is number of claimants as a proportion of resident population of the same age

Ages 50+: Claimant count rate 2015-2016



Ages 50+: Claimant count rate 2014-2016

