

Foxbar, Glenburn & Brediland

Local Profile: Background Information



#ourRenfrewshire

 Renfrewshire
Community Planning
Partnership

Population

How many people live here?

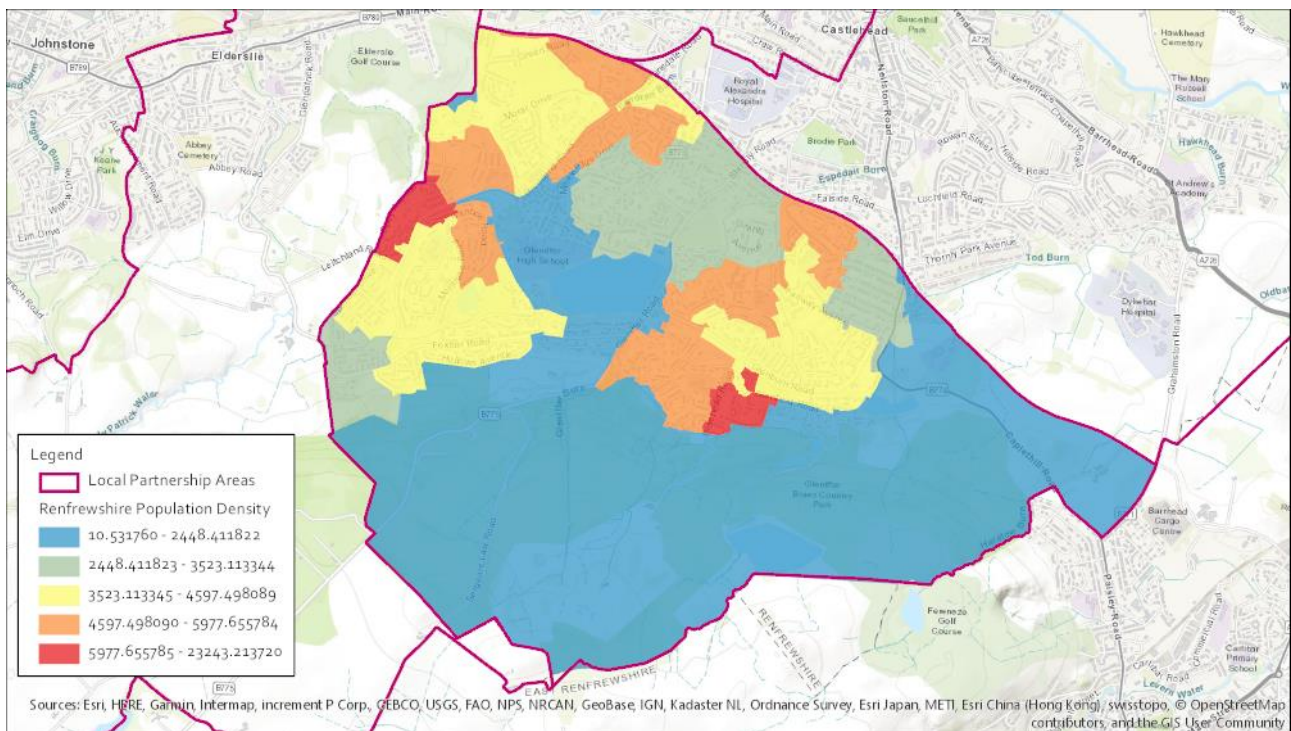
22,342 people in total live in the area and below are the main concentrations of population:

GLENBURN	9291
FOXBAR AND BREDILAND	13051

What age are people living here?

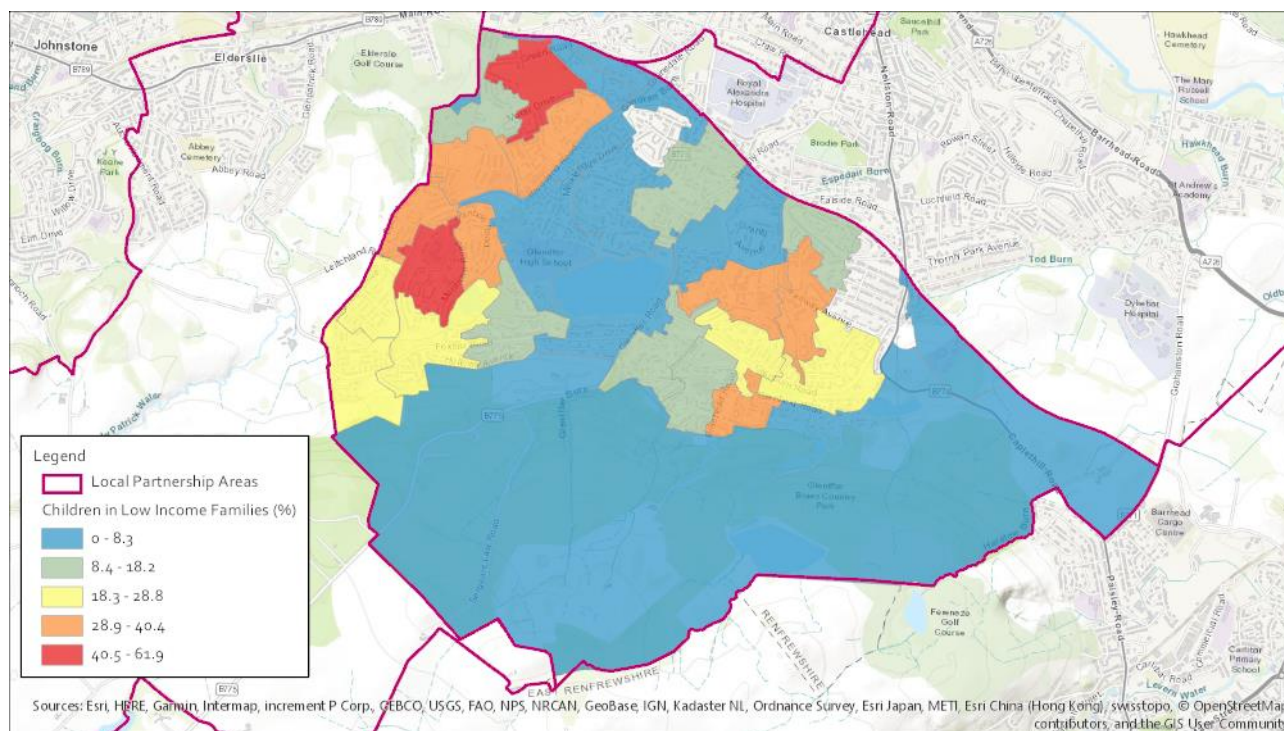
	Under 16	Aged 16-64	Ages 65+
Paisley Foxbar	16%	65%	18%
Paisley Glenburn East	18%	65%	17%
Paisley Glenburn West	19%	62%	20%
Paisley South West	14%	64%	23%
Paisley South	17%	68%	16%
Overall	17%	65%	19%

Population Density



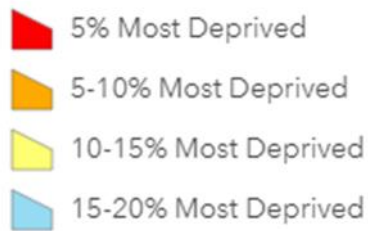
Children in Low Income Families

As recorded by the Scottish Index of Multiple Deprivation



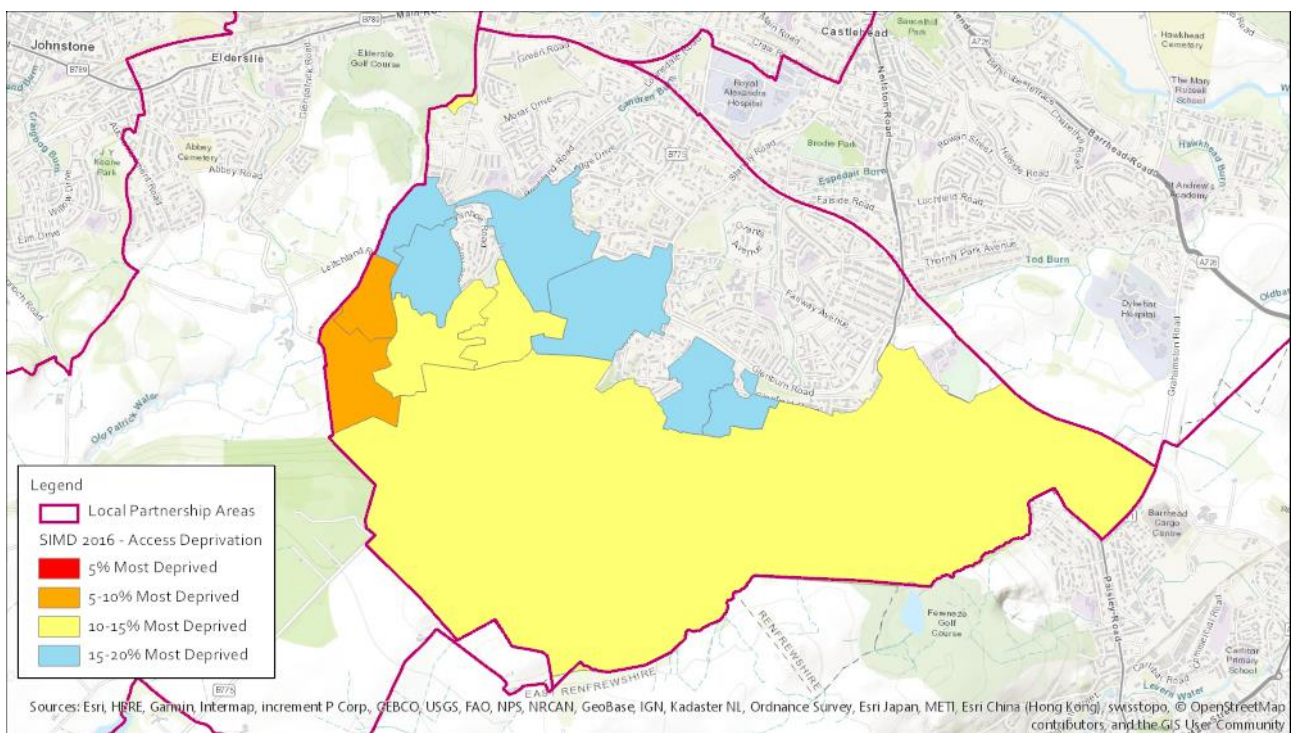
The tables below are also taken from the Scottish Index of Multiple Deprivation and show other dimensions of deprivation: access, health and crime. The key below applies to the following three tables.

SIMD 2016 - Access Deprivation



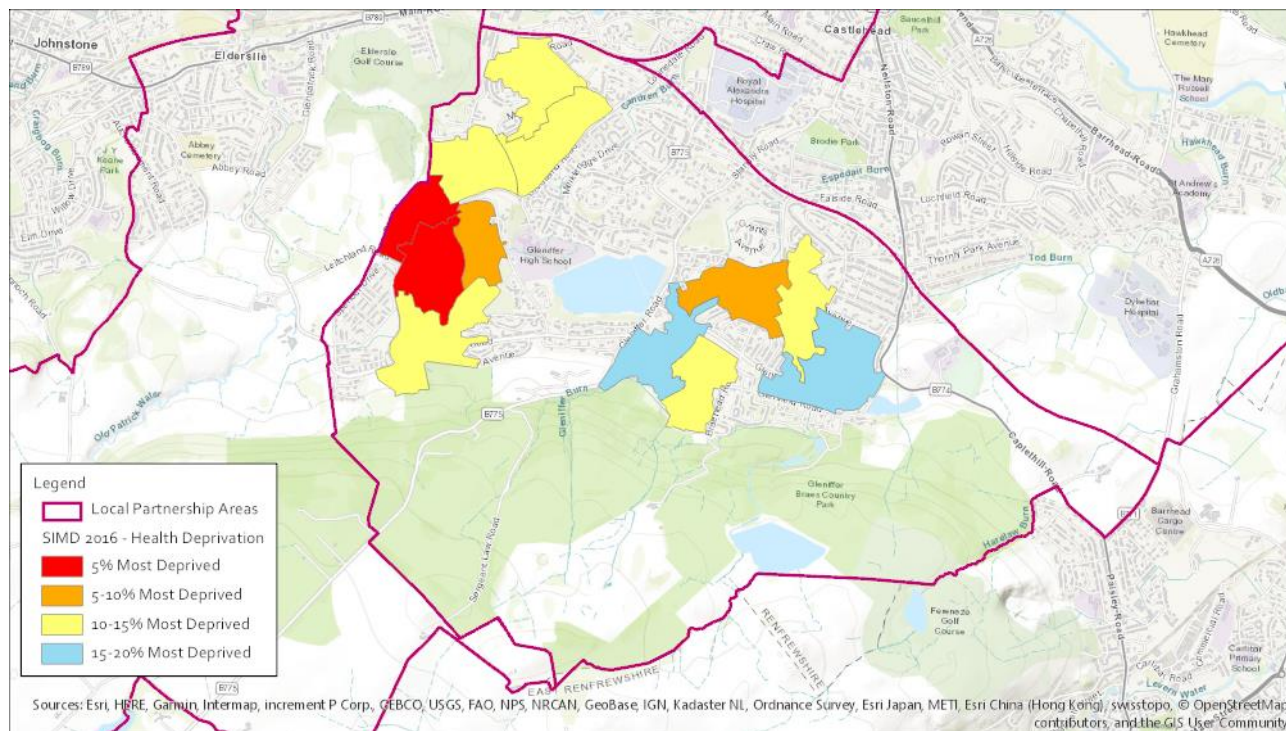
Access Deprivation

This measure includes drive time to GP, to retail centre, to petrol station, to primary and secondary schools, to post office and public transport time to GP, to retail centre, to post office.



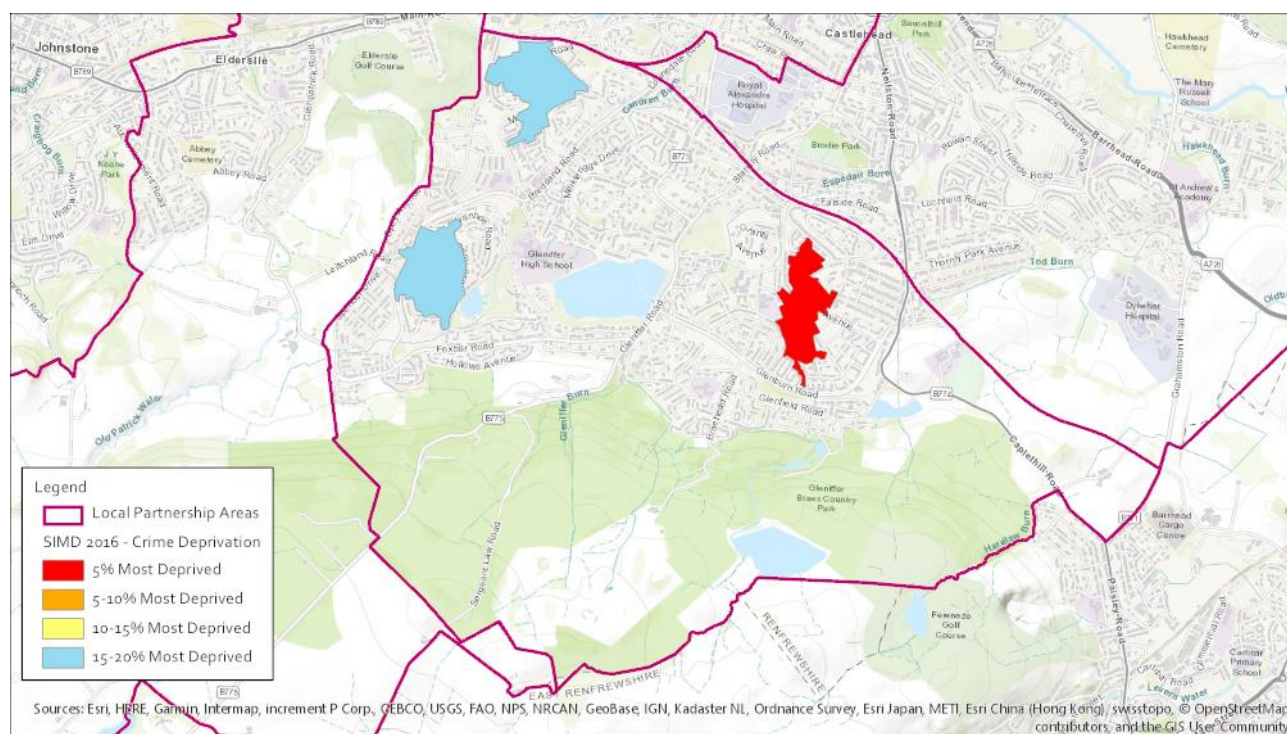
Health Deprivation

This measure includes the Standardised Mortality Ratio; Hospital stays related to alcohol misuse; Hospital stays related to drug misuse; Comparative Illness Factor; Emergency stays in hospital; Proportion of population being prescribed drugs for anxiety, depression or psychosis; and Proportion of live singleton births of low birth weight.



Crime Deprivation

This measure includes Domestic house breaking, Drug offences, Common assault, Crimes of violence, Vandalism and Sexual offences.



Place Standard, 2017

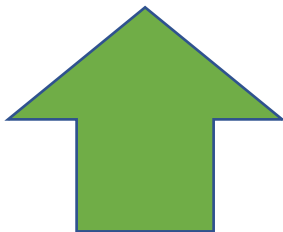
100 respondents in Paisley South were involved with the Our Renfrewshire, Place Standard Consultation 2017. 74% of the respondents were female, 24 % were male, with most respondents of working age.

Safety came out top, as the term mentioned most when thinking about priorities for the area. The wordle below shows the terms that were most frequently mentioned in the largest text, when discussing priorities for the area.



Most positive responses

Respondents felt most strongly positive about the following themes:



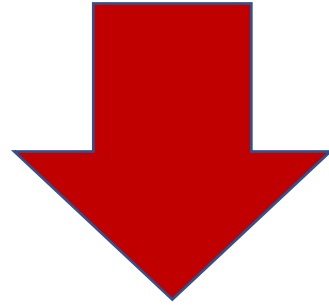
Natural space

Housing and community

Least positive responses

Respondents felt negative about the following themes:

Traffics and parking
Work and local economy
Feeling safe
Care and maintenance
Influence and sense of control



Mixed responses

Most mixed responses were received about moving around; public transport; streets and spaces; play and recreation; facilities and amenities; and social contact.

Children & Education

Education resources

Secondary School

Gleniffer High School (non denominational)

Primary Schools

Brediland Primary School (non denominational)

St Paul's Primary School (denominational)

Heriot Primary School (non denominational)

Bushes Primary School (non denominational)

St Peter's Primary School (denominational)

Langcraigs Primary School (non denominational)

Nurseries

Carriagehill Nursery - Green Road (private and voluntary sector)

Foxlea Pre-Five Centre (local authority)

Heriot Nursery (local authority)

Bushes Nursery (local authority)

St Peter's Nursery (local authority)

Glenburn Pre-Five Centre (local authority)

Glenfield Pre-Five Centre (local authority)

Hollybush Pre-Five Centre (local authority)

Parks and Play Areas

Cardell Road Playing Fields

Play Parks, Lyon Road

Durrockstock Park, & play areas

Playpark at Gleniffer Court

Playpark at Fereneze Drive

Glenburn Neighbourhood Park

Playpark at The Glen

Playpark at Robertson Park

Gleniffer Braes Country Park

Health Resources

GP Practices

Foxbar Clinic

Glenburn Medical Practice

Pharmacies & Dentists

Foxbar Pharmacy

Foxbar Dental Practice

Glenburn Pharmacy

Glenburn Dental Practice

Care Homes, Extra Care & Sheltered Housing

Care homes are listed below:

Care Homes

Elderslie Care Home (120 units)

Montrose Care Home (60 units)

Stanely Park Care Home (34 units)

Braemount Care Home (120 units)

Hillside View Care Home (60 units)

Extra Care, Respite & Sheltered Housing

Newton Court (24 units)

Burnfoot Crescent (34 units)

Ailsa Court (24 units)

Weavers Linn Respite Unit (10 units)

Adult Health and Wellbeing across Renfrewshire

- 80% of people say their health is good or very good.
- 15% of people say they smoke, 10% drank alcohol at least twice per week.
- 7% of people feel isolated from family and friends.
- 46% say they have at least 5 portions of fruit and veg per day.
- 47% of people do 150 minutes of exercise per week.