
To: Education and Children's Services Policy Board

On: 22 August 2019

Report by: Director of Children's Services

Heading: Response to proposal to consult on a catchment review affecting Bishopton Primary School and a New Primary School to be built at Dargavel Village

1. Summary

- 1.1 On 17 January 2019 the education and children's services policy board agreed to a formal consultation on a proposal to review catchment arrangements affecting Bishopton Primary School and a New Primary School to be built at Dargavel Village.
 - 1.2 In line with legislative requirements detailed in the Schools (Consultation) (Scotland) Act 2010, amended through the enactment of the Children and Young People (Scotland) Act 2014, a formal consultation on the proposal was undertaken and a consultation document was prepared and issued simultaneously to parents and interested parties affected by the proposal.
 - 1.3 The consultation formally opened on 5 February 2019 and closed at 12 noon on 26 March 2019.
 - 1.4 The purpose of this report is to provide the education and children's services policy board with recommendations which recognise the issues raised, comments made and responses provided, in the course of the consultation exercise. A report on the issues raised and a consideration of these is included as Appendix 1 to this document.
 - 1.5 The outcome of this consultation demonstrates support for the proposal and the education and children's services policy board is therefore asked to approve the recommendation to alter the catchment areas affecting Bishopton Primary school and a New Primary School to be built at Dargavel Village to create a natural geographical boundary which will allow all non-denominational pupils the opportunity to attend a local non-denominational school in Dargavel Village.
-

2. Recommendations

- 2.1. The education and children's services policy board is asked to:
- note the issues raised through the formal consultation detailed in Appendix 1;
 - note the comments made by Education Scotland in relation to the educational benefits of the proposals detailed in Appendix 6;
 - approve the revised catchment arrangements affecting Bishopton Primary school and a New Primary School to be built at Dargavel Village; and
 - approve the implementation of the catchment changes following construction of the new school.
-

3. Background

- 3.1 As part of A Minute of Agreement Under Section 75 of the Town and Country Planning (Scotland Act) 1997 between Renfrewshire Council and BAE Systems (Property Investments) Limited in November 2012 agreed the creation of a new housing site at the location of the former Royal Ordnance Factory (Bishopton). Within this agreement BAE Systems (Property Investments) Limited undertook to build a new primary school. The site location is currently referred to as "Dargavel Village". It is recognised that currently there are no catchment arrangements for any new school.
- 3.2 The education and children's services policy board agreed to a formal consultation on the proposal to review catchment arrangements affecting Bishopton Primary School and New Primary School to be built at Dargavel Village.
- 3.3 Elected members agreed a consultation document which was subsequently issued to parents and interested parties affected by the proposal. A copy of the consultation document is attached to this report as Appendix 2.
- 3.4 The consultation formally opened on 5 February 2019 and closed at 12 noon on 26 March 2019.
- 3.5 Responses to the proposal to review the catchment areas affecting Bishopton Primary school and a New Primary School to be built at Dargavel Village are contained within Appendix 1 to this report.
-

4. Consultation

- 4.1. Following agreement to consult on the proposal to review catchment arrangements a consultation document was issued to parents and interested parties affected by the proposals.
- 4.2. The consultation document invited members of the public to respond to the proposals either through contributions to a public consultation meeting or by written submissions in hard copy or email to the director of children's services. Interested parties also had the opportunity to take part in the consultation through the Council's online survey.
- 4.3. A public meeting was held for parents and members of the public as part of the consultation process on 5 February 2019.

A brief presentation was made by officers from children's services to outline the background to the proposal, highlighting the impact this would have on the school community. Questions were invited and notes of the questions asked and the answers provided by education officers were recorded.

- 4.4. A report on written responses received and comments made through the Council's online survey is attached as Appendix 1 to this report.

5. Comments and observations arising from the consultation

- 5.1. During the course of the consultation, questions were raised regarding how the Council would progress this proposal. Appendix 1 to this document, "Response to the consultation on the proposal to review catchment arrangements affecting Bishopton Primary school and a New Primary School to be built at Dargavel Village ", details the questions asked and the responses provided.
- 5.2. Education Scotland have been consulted on the proposal in line with legislative requirements detailed in the Schools (Consultation) (Scotland) Act 2010, amended through the enactment of the Children and Young People (Scotland) Act 2014. The response received from Education Scotland was supportive of the Council's proposal and is attached to this document as Appendix 6. A summary of this finding is noted below.
- 5.2.1. Overall, Renfrewshire Council's proposal to review the catchment area of Bishopton Primary School and a new primary school to be built at Dargavel village offers potential educational benefit by providing a newly built school in Dargavel Village whilst also addressing capacity issues at Bishopton Primary School.
- 5.2.2. The proposed boundary between the two catchment areas is clear, has the support of most stakeholders and is likely to provide for safe walking routes to school.
- 5.2.3. There is an ongoing need to ensure full and clear communication with stakeholders, including parents of current and future pupils of both schools, with regard to the location and development of the new school and the transition process for children. There will also be a need to work with both schools and relevant stakeholders to support community coherence once the new primary school opens.
- 5.3 Children's services will continue to ensure the points raised in 5.2.3. above, are taken forward with the schools and community.

Implications of this report

1. **Financial**
None.
2. **HR and Organisational Development**
None.

3. Community/Council Planning

Our Renfrewshire is thriving

- All non-denominational pupils within the defined area will have the opportunity to attend a new primary school.

Creating a sustainable Renfrewshire for all to enjoy

- The travel distance to and from school will be reduced.

4. Legal

Renfrewshire Council will adhere to the Schools (Consultation) (Scotland) Act 2010 (the 2010 Act) in respect of any proposals that alter education provision.

5. Property/Assets

Through its school estate the Council aims to have an efficient and well maintained property portfolio which provides learning environments which support the delivery of the curriculum.

6. Information Technology

None.

7. Equality and Human Rights

The Recommendations contained within this report have been assessed in relation to their impact on equalities and human rights. No negative impacts on equality groups or potential for infringement of individuals' human rights have been identified arising from the recommendations contained in the report. An equalities impact assessment is attached as Appendix 5 to this report.

8. Health and Safety

None.

9. Procurement

None.

10. Risk

None.

11. Privacy Impact

None.

12. Cosla Policy Position

None.

13. Climate Risk

None.

List of Background Papers

- (a) Background Paper 1: Proposal to Consult on a Catchment Review Affecting Bishopton Primary School and a New Primary School to be built at Dargavel Village

The foregoing background papers will be retained within children's services for inspection by the public for the prescribed period of four years from the date of the meeting. The contact officer within the service is Alison Gallagher, Resources Manager, 0141 618 7240, alison.gallagher@renfrewshire.gov.uk

Children's Services

AG/GMcK/LG

13 August 2019

Author: Alison Gallagher, Resources Manager, 0141 618 7240, alison.gallagher@renfrewshire.gov.uk

Response to the consultation on the proposal to review catchment arrangements affecting Bishopton Primary school and a New Primary School to be built at Dargavel Village

1. Consultation Process

- 1.1. Following agreement to consult on the proposal of a catchment review affecting Bishopton Primary School and a New Primary School to be built at Dargavel Village a consultation document was issued to all interested parties.
- 1.2. A consultation meeting was held with parents and members of the public and a meeting was also held with staff from the affected school.
- 1.3. The consultation formally opened on 5 February 2019 and closed at 12 noon on 26 March 2019.
- 1.4. Copies of the consultation document were issued to parents of every pupil in attendance at Bishopton Primary School and St John Bosco Nursery Class, Cairellot Nursery, Enchanted Forrest Nursery and to all parent council groups. Copies of the document were also distributed to local libraries and a copy was placed on the Council website. An advert to notify the public of the consultation meeting was also placed in the local press. In addition the consultation document was issued to council officers, local elected members, MSPs and MPs for the Renfrewshire area and Education Scotland.
- 1.5. All formal responses submitted as part of the consultation exercise have been retained and can be viewed on request to the director of children's services.

2. The Consultation

A number of written responses were received from interested parties registering their comments on the proposal. The following is a breakdown of responses that were received:

Category	Number of Responses	Type of Response
Parents	46	on-line survey or questionnaire
Pupils	1	on-line survey or questionnaire
Renfrewshire Resident	17	on-line survey or questionnaire
Renfrewshire Resident	1	e-mailed question

- 2.1. The public meeting was held in Bishopton Primary School on 5 February 2019 and was attended by 62 members of the public.
- 2.2. A note of the meeting was taken and can be obtained by request to the director of children's services and can be viewed on the Council website.
- 2.3. Arrangements were made to consult directly with the staff at the school.

3. Analysis of key issues raised during the consultation

- 3.1. 1 general enquiry was received and 64 responses were received via the on-line survey.
- 3.2. 54 responses (86%) were supportive of the proposal and 10 (16%) responses were against.

4. Response to key issues raised during the consultation

4.1 Questions, comments and responses from online survey have been summarised under headings below:-

Catchment

Comments:-

- It leaves the current catchment area for my child unchanged.
- The area Dargavel covers large enough for the school being built.
- With the number of houses being built in Dargavel, and them calling themselves an outright village it seems only right that they have their own catchment area for their school and Bishopton Primary remains as just Bishopton for the catchment.
- Bishopton Primary School should remain as a catchment for Bishopton pupils and Dargavel Primary School for Dargavel Village pupils.
- I do not agree that the railway line is the natural boundary, the natural boundary is the original village.
- Logical and sensible proposal of position of new catchment boundary lines.
- Living in the North of Dargavel we are closer to Bishopton Primary School than the new proposed school.
- I feel it gives a clear natural boundary.
- I bought my home in Dargavel on the basis that I was buying a home in a new village with a custom built primary school. The catchment area reflects this boundary very well.
- Natural and logical geographical boundary.
- Under The proposed catchment area I would fall into Dargavel School however I don't live in Dargavel.
- New school will be closer to home for grandparents to pick up/drop off.
- Common sense dictates that with a new educational establishment pareneteres have to be established and set in order that the correct number of children are allocated to each school to maximise education and teacher: child ratio.
- I would like the catchment for Bishopton Primary School to remain as it is (the original village) and the new school to be for residents of Dargavel.
- I am in favour of catchment review as I'd like to be able to keep my daughter in Bishopton primary school despite living close to the new dargavel school.
- Makes sense for the catchment to be based on the new houses within Dargavel Village.
- It makes sense for Bishopton children to go to Bishopton Primary and not have to go to the new village of Dargavel.
- The proposal means people within Bishopton will still attend Bishopton Primary.
- Minimal disruption to bishopton village and ensuring that children with bishopton village are able to attend bishopton primary.
- Dargavel is now it's own village and needs its own school.
- When new school is built pupils should be moved to their catchment area.

- The development continues to grow - so it would make much more sense to allow Dargavel to have access to the new school and build with sufficient capacity for the finished development.
- Children in houses that were part of the original village (eg Hamilton Cres) would have to walk the furthest distance to the school, if they are then taken by car to school they would have to drive past Bishopton Primary to get to the new school.
- The new school should be for dargavel village only and bishopton for village only.
- New catchment area needed to service and cope with new housing development.
- The way in which the split has been decided is the fairest way although it does create a divide.
- The catchment suggested is the most sensible way to split.
- It makes sense for Dargavel children to go to school in their own village of Dargavel.
- Natural line of railway ensure children are not required to cross this to reach school.
- Why does Bishopton primary not have a catchment area currently? There are kids at the school who live in paisley and port glasgow.
- EXPECTATION - The railway line is a natural split across the two villages and it was always an expectation that living in bishopton meant going to bishopton school - not darvgavel.
- Our kids can walk to school currently, the new school is too far from us therefore we would put in a in a placing request to keep them in Bishopton Primary if needed. It's all about proximity, encouraging daily activity by walking to school and independence in the children.
- It is difficult to object to the proposal when there isn't an alternative being mooted ?
- Having attended the meeting it felt like a decision was already made and the idea that it was a consultation was not accurate. It seems like this catchment has already been decided.
- It makes sense to have the proposed catchment area.
- Greenock Road makes a natural boundary.
- Is the most logical way to do it. The new catchment area for Dargavel and the number of properties it covers will probably mean the new Dargavel school will be over subscribed as it is and to increase the catchment area would place a burden on the school.
- While we appreciate that a catchment review is necessary given the ever expanding roll of the current school it is a shame that it in essence separates old from new.
- We very much welcome being given the option of which school our child, currently P3, will attend.

R: Renfrewshire Council welcomes input from all parties and will give careful and sensitive consideration to the points noted above. To allay any concerns Children's Services will work closely with the head teacher of Bishopton Primary School and the new school to ensure that the school community understands the choices available to the pupils potentially affected by this proposal (as described in section 6.6 of the original consultation document) which states: *"If the proposal is approved then all pupils living in affected addresses attending Bishopton Primary School would be entitled to continue attending and if they are entitled to free school transport, in line with the Council's transport policy, then this entitlement would also continue."*

Joint working for community schools is an important factor in not creating division. We are confident both schools will work together to manage educational experiences.

A change in the catchment area will not have a detrimental effect on teaching arrangements, reduced teacher numbers.

A catchment review means that all pupils living in Dargavel Village will have the opportunity to attend their local non-denominational primary school and have the opportunity to do so through safe walking routes to school.

Building

Comments:-

- A single school should be built for all.
- There is no requirement for a catchment review. Just build a new Primary School for Dargavel Residents only.
- The proposed 2 stream school is not large enough for whole of Dargavel.
- All children should benefit from having a new school.
- A more personalised and family/pupil friendly school.
- A new school should be built but for occupants of Dargavel village only.
- A school has to be built to cater for the amount of children in the future, or a single stream school when potentially 100 per year.
- New school buildings are a boost to our children's education and motivation to learn.
- With Dargavel having another 7years of build ahead I cannot see how the new school can cope with the potential numbers.
- The ROF playing fields should have been earmarked for the new school location therefore it would have been more central. The old school and its grounds could then have been redeveloped into a sports facility for the village. It seems that unless you live in the new Dargavel, which is not a village in its own rights (this was the initial mistake made when naming the area this has caused the initial divide), you will feel no benefits within the existing community. I do not believe that the proposals have been thought through carefully enough.
- Although I don't have an issue with the proposed catchment line. The size of new school is too small. This may have been based on original Dargavel village plan however since then 3 proposed industrial areas are now going to be houses. Size of school should be increased to accommodate for growing village.
- Recognise the new school is being built by the developer for the new houses and this is their sole obligation.
- Children not living in dargavel should not be forced to attend a school on contaminated land.
- While residents of Bishopton have moved across to Dargavel others did not like the thought of building on 'contaminated land' and the latter should not require to send their children to a school built on such land.
- Dargavel others did not like the thought of building on 'contaminated land' and the latter should not require to send their children to a school built on such land.

- Why do you want to take survey when it was in the original plan to build a school in Dargavel Village? This seems to be in the best interest of few individuals who wanted to swindle money and fill their pockets by using the land allocated for building the school for building more houses. Just the same way you got away with not giving the land to the church that was in the original plan. STOP the survey and START building the school.
- Quality of Education and School infrastructure.

R: The developer's obligation in terms of the Section 75 agreement is to provide a school for the number of houses built within the Dargavel Village. The new school is being designed in line with Scottish Government guidance and council roll projection methodology. The design development of the new building would reflect input from Children's Services and accommodate the full range of provisions for curricular and extra- curricular activity.

Community

Comments:-

- The new catchment will split up friendships.
- To find out if our kids will be continuing at Bishopton Primary School.
- Splitting the village. The community works better as a whole.
- Where the new school is to be located further divides the village from Dargavel we are all meant to be the same village.
- Creating a divide between the two ends of the village.
- My child is currently at nursery with other children who will go to this school and I would rather my child was kept with them rather than being split up.
- Splitting the village will exasperate the them and us situation which already exists between the original Bishopton and new Dargavel area of Bishopton.
- It divides the community of Bishopton.
- While there appears to be a keenness from some quarters to merge Bishopton / Dargavel they are two quite separate entities and would benefit from their own schools.
- Residents should be given the choice which school their kids go to.
- Splitting of friendships and mental health issues arising from this.
- CHILDRENS FRIENDSHIPS - Its important for children to be able to go out and become independent playing with other children. Splitting bishopton catchment across bishopton would limit opportunity for children to become independent.
- I moved to Bishopton for the village feel - part of the appeal was the school.
- Two schools will create an "us and them" situation. One school would help integration.
- Will be good for Dargavel Village.
- Community integration.
- In order to maintain some form of community spirit across the two schools can we ask that Renfrewshire Council and the two schools look at ways to link the schools together, eg maintain existing school house structure (eagles, hawks etc).

R: If the approval to proceed is secured the head teachers of both schools will work with staff, parents and pupils to ensure a successful and respectful transition.

The Council acknowledges both school communities require to build relationships, interactions and quality education. Through a process of transition of the current pupils the experiences can be celebrated through a wide range of educational activities involving all partners of the schools.

Placing request legislation allows for parental choice in relation to choosing a school.

Development

Comments:-

- All Dargavel addressed in catchment area for new school...houses bought in Dargavel on promise of new school deciding/contributing factor for most buyers.
- Dargavel is marketed as a separate village to Bishopton, it should have its own identity.
- People Who bought houses in Dargavel bought expecting a new school within their estate.
- The North of Dargavel is much closer to Bishopton Primary than the proposed site of the new school. Also residents in parts of the north (TW/Cala) were advised on purchase that they would remain in the Bishopton catchment area.
- Avoids contaminated land issue for people not wanting to live on contaminated land.

R: The developer's obligation in terms of the Section 75 agreement is to provide a school for the number of houses built within the Dargavel Village. The new school is being designed in line with Scottish Government guidance and council roll projection methodology. The design development of the new building would reflect input from Children's Services and accommodate the full range of provisions for curricular and extra- curricular activity.

Existing School Impact

Comments:-

- Existing school crowded with 'temporary' classes added into playground.
- Current school over crowded. Affecting lunch/play times and class sizes.
- Too many pupils already attending bishopton primary.
- Bishopton Primary is old building.
- My son is currently in P2 and when he started last year the enrolment for p1 alone was 104 kids. The school is for to burst and in areas is run down. The volume of children now attending will speed up this deterioration.
- New school is required as despite claims the current school is overcrowded.
- Bishopton Primary is too small to cope with the amount of new children from the new Dargavel Village.
- Ridiculous that thousands of houses were allowed to be built with no provision for a school already in place.
- I believe the village needs 2 smaller schools not one large one.
- A new school is needed due to huge classes in p1.
- I am for the review of the catchment area as my Daughter attends the Primary School and I feel it is overcrowded and becoming unsafe and unmanageable with the amount of adults entering the playground.
- Current school is not big enough for the whole area.
- Developers told no capacity at primary prior to starting construction of Dargavel .
- There are too many children in the infant department in Bishopton primary already.
- Current school overcrowded.
- Lack of facilities in existing school as all rooms converted for classes, losing dedicated music and art rooms.
- Bishopton Primary is at full capacity.
- Splitting the school will also help child to teacher ratios.
- Bishopton school can not cope with capacity. It's sub optimal.
- There is nothing mentioned about repairs and upgrading of existing Bishopton primary. This risks them and us. Despite the sacrifices the primary school has made to accommodate extra pupils. For example no desks in p1.
- The children have a right to the best education we can provide and I do feel the impact of the increase in numbers and the added pressure and demands on the school and community as a whole are not beneficial to my child.
- Current school should only be for bishopton children. Dargavel children should go to new primary school. Less disruption for the kids and they aren't all squeezed into the one.
- Bishopton Primary is a great school - it would be ashame to lose that in a big combined school.
- Classes in existing school being halved when new school opens.
- Bishopton Primary is almost full.
- Not enough IT/ resource equipment for amount of pupils.
- Overloaded classrooms.
- Relieve pressure on existing Bishopton Primary School.
- Looking at the Village as a whole and basing the catchment on proximity to the schools will ensure both schools have good numbers (lots of young families moved into Dargavel) and will ensure long term sustainability of both education facilities.
- There are accidents in the infant playground daily, this will only get worse as more kids join the school.
- Something needs to be done to cut numbers at current Bishopton school.

- Bishopton primary is run down and requires investment to modernise it and provide better facilities.
- Bishopton Primary also needs a good refurb. It's the building that I attended 40 years ago. It's run down and needs new facilities.
- No provision for old Bishopton primary to look at repairs we need having housed additional pupils.
- I would hope the new school opening would assist the capacity issued particularly in lower primaries at Bishopton. I would say that Bishopton primary should not be forgotten in terms of renovation as it has been well used by huge amounts of children in recent years.
- Current school overcrowded.
- I attended the consultation meeting and am not confident the suggestions made will be given due consideration. This process also does not allow for suggestions, only capturing reasons for position. I would therefore like to use this section to support one of the suggestions made that the two schools are viewed as the one campus with two buildings and a shared management team. This will remove divisions within the village and allow pupils from both catchment areas to benefit from shared new facilities; particularly as there was little commitment from the Head of Schools to invest in Bishopton Primary which has had little investment and modernisation since I attended 30 years ago, is becoming increasingly run down and is significantly below the standards and environment required for children to learn and grow.
- The Bishopton Primary School is just overloaded with too many kids.
- The existing school is old and tired and not fit for purpose
- I have already had correspondence with Derek Mackay who in turn forwarded these to Mr Gordon McKinlay only to be told a reply to the points raised would "not be appropriate at the time". As yet I have never received any further comments to the points I raised. I mentioned, as a perfect example of a new primary school in Crieff. I received no comment regarding that. We take our grandsons to school several days each week and standing in the playground looking at the existing school just reinforces the fact the school is tired and not fit for modern education purposes. Having two schools will surely create two communities and an "us and them" situation with the children. One new school in Dargavel for ALL the village away from the main A8 road is a far safer environment and would solve the ridiculous parking situation that exists in Old Greenock Road and no children charging down the Ashy Path at home times towards the main road.

For many reasons we should have One School

- Need a new school.
- Too many pupils in bishopton primary.
- No funding of Bishopton Primary
- The existing school is choked - access is increasingly difficult and infant playground overcrowded.
- Children deserve space to learn and grow within the school estate, however increasing roll will reduce amenities.
- Larger class sizes are contra to Scottish Government's stated aims to reduce numbers, in order to maximise learning and close attainment gap.

- The current Bishopton primary has been under tremendous infrastructure and resource constraints to cater for Bishopton residents and our new neighbours at Dargaval. It is concerning that the proposal does not offer any funding or investment in the existing primary school. The idea that, once Dargaval school is open and Dargaval-catchment students redirected there, all of Bishopton Primary's problems will disappear is illogical. These are long-term infrastructural issues. The new village has availed of this resource for years and now needs to help address the problem with financial investment.

The proposal to offer current students (and their siblings) the option to attend Bishopton primary even after Dargaval school is open is a fair one and does much to integrate both communities. However, this needs to work both ways and there should be a commitment that a certain percentage (no less than 10%) of available places at Dargaval be ringfenced for Bishopton residents each year.

R: Renfrewshire Council considers 3 core facts in relation to school buildings. The current condition rating for Bishopton Primary is "B" satisfactory.

The development of a new school will assist with the current pressures facing Bishopton Primary School in relation to numbers of pupils attending. Additional temporary accommodation and resources have been provided to relieve pressures. The department continues to monitor roll projections for this school.

The Council continues to provide repairs and maintenance support to the school and prioritises works in line with budget priorities.

The Council budget agreed in February 2019 advised of further investment for refurbishment of Bishopton Primary School.

Miscellaneous

Comments:-

- A small village fighting over limited resources from education.
- This is and has been a priority for a number of years and action is required.
- The suggestion has been made that children from Dargaval will not be made to leave the original school does this not contradict what is being achieved.
- The new school should be for ALL the village. Two schools surely means duplication and more costs

R: BAE is building a new school based on the number of houses they are creating within the Section 75 agreement. The new school is being delivered earlier than the timescales provided within the agreement.

Both schools will continue to receive equal support in terms of resource provision provided to all schools within Renfrewshire.

Transition arrangements will be put in place. We are not asking those already in the school to move, although they are free to do so if they wish. Where there are siblings in the school they will have the choice to attend Bishopton Primary school. There will be no requirement for two children to be at different schools. This process will be managed with parents.

Placing request legislation allows for parental choice in relation to choosing a school.

Safety / Transport

Comments:-

- WALK UNDER DANGEROUS NARROW TRAIN TUNNEL - I live in bishopton and I don't want my children to have to walk under the dangerous train line to get to school, or have to get a bus. Nice safe walk at present.
- For safety reasons the proposed catchment area should be agreed. The less children walking over main roads etc to get access to a school the better. Makes sense for the Dargavel residents have safe access to a school within a reasonable walkable zone.
- It makes sense as travelling across the railway line would be awkward and potentially dangerous.
- It's safer for children in dargavel to go to the new school as the don't have to cross a busy main arterial route.
- The main road dissecting bishopton is particularly busy and I would have concerns about children from Dargavel crossing this road to attend bishopton.
- Bishopton primary is five mins walk from my house.
- Dargavel children need a school closer to their area.
- QUALITY OF LAND - I bought my house in bishopton despite it costing significantly more than equivalent in darvgavel as I do not want my children on contaminated land. People who have already bought houses in darvgavel obviously have no concerns.
- My daughter can walk to school in P6/7. It would be too far for children from my street to walk to a school in Dargavel.
- Concern re traffic congestion on Old Greenock road, inconsiderate parking in wrong areas due.
- Allows pupils in new proposed catchment area to be within walking distance of new school, therefore reducing traffic.
- Means my child can still walk to school safely & provides exercise.
- Travel Distance.
- Avoids walking across extremely busy road & under train tunnel which is dark & narrow & busy with traffic going between car parks.
- The Walking distance from my home to the School is 0.9 miles and makes it difficult to commute during winter months.
- No safe walk/route from old bishopton to dargavel.
- Greenock Road is a busy road and as few children should've to cross it as possible.
- Having one school not adjacent to a main road is a safer environment for children.
- We are currently located in easy walking distance of current primary school, and would remain so after the boundary
- I agree that the catchment boundary line should be the existing railway line. This will encourage school children to walk to a nearby school promoting a healthy lifestyle.
- My daughter's (x2) grandparents live close to the current school and they will often take them to and collect them from school.
- A local school for local children will discourage car "drop offs and pickups" improving local and national air quality.
- Safe walking routes between where we live in 'old' bishopton to where the new school is to be located are minimal and in some cases perhaps not fully safe - I would prefer my children to stay away from the railway line.
- My wife and I child mind our two granddaughters, one will be attending Bishopton primary school next year. As we live about a quarter of a mile from the school it's down to us to collect her from school at the end of the day.

- If my children were to attend the new school, I would envisage requiring use of a vehicle more often, during winter and bad weather, which goes against the encouragement of children walking to/from school and increases the number of vehicles at a school.
- Less traveling for the kids.
- My mother (who will often collect my children from school) does not drive, and she is currently a 5 minute walk from the current school, but a lot further away from the new school and I can't expect her to walk that far with two young children, especially in bad weather.
- Increasing housebuilding will bring increasing congestion to roads leading to school, exacerbating existing problems.

R: We have to consider safe walking routes / transport implications. We want to encourage walking as much as possible and consider revenue implications for transport.

The location of the current school and the new school will provide safe walking routes within both of the catchment areas being proposed.

Secondary Provision:

Comments:-

- Moving on to high school, there will be too many pupils for erskine.
- I am interested in the impact the increasing roll of Bishopton Primary and in the future Dargavel Primary will have on Park Mains High School. While this focuses on Primary education and think it would be remiss not to consider secondary education too.

R: Renfrewshire Council's model for roll projection has been used to determine future rolls for primary and secondary establishments. The new school and any future expansion to Parkmains High School will be informed by this data.

Staffing

Comments:-

- No consideration of the existing school/staff and what this will mean for them.

R: With regard to staff employment this would be given early consideration prior to the opening of the new school to ensure that relevant staff were secured. With regard to staff reductions it should be noted that the Council has a policy of no compulsory redundancy for permanent employees which would allow for negotiated re-deployment where appropriate.

4.3 Questions, comments and responses from written submissions

Q: I would like to make a few points regarding the proposed new primary school and the existing school. Would such comments be considered at this stage given the closing date for the public consultation is today ?

R: This enquiry was received on 23rd February and was responded to advising that the consultation was open until 26th of March and the individual was also provided with link to the consultation questionnaire page.

4.4 Questions, comments and responses from Pupils

- C: Response from pupils attending Bishopton Primary School. All pupils and young children were consulted on the proposal and a concern regarding the impact on friendships was raised by pupils attending the school.
- R: If the proposal is approved by elected members the head teacher will ensure that pupils are informed of the rationale for the decision made. She will also ensure that it is explained that all pupils currently attending Bishopton Primary School will have the right to remain in the school.

THIS IS A CONSULTATION DOCUMENT

Proposals relating to:

Catchment Review Affecting Bishopton Primary School and a New Primary School to be built at Dargavel Village

1. Introduction

- 1.1 The Schools (Consultation) (Scotland) Act 2010 (“the 2010 Act”) makes provision for the consultation process that is to apply re: various proposals made by Councils for schools. The principal purpose of the 2010 Act is to provide strong, accountable statutory consultation practices and procedures that local authorities must apply to their handling of all proposals for school closures and other major changes to schools. These consultation processes are expected to be robust, open, transparent and fair, and seen to be so. They are also expected to be consistent across Scotland. The 2010 Act applies to a wide range of changes to the school estate, referred to as “relevant proposals”.
- 1.2 This report seeks approval to consult on the proposal to revise catchment arrangements between Bishopton Primary School, the establishment of a new primary school to be built at Dargavel Village and the establishment of the catchment area for that new non-denominational school. Note that provision for denominational pupils within Dargavel Village will remain unchanged, within the St John Bosco Primary School catchment. In accordance with Section 2 and Schedule 1, Para. 4 of the 2010 Act a proposal to vary any admission arrangements for a school, including a proposal to alter the catchment area of a school, is a relevant proposal for the purposes of the 2010 Act. This proposal is therefore a relevant proposal for the purposes of the 2010 Act.
- 1.3 This is the proposal paper, produced by the Council in accordance with the terms of Sections 1 and 4 of the 2010 Act. This proposal paper must:
 - a) set out the details of the relevant proposal;
 - b) propose a date for implementation of the proposal;
 - c) contain the educational benefits statement in respect of the proposal;
 - d) refer to such evidence or other information in support of (or otherwise relevant in relation to) the proposal as the Council considers appropriate; and
 - e) give a summary of the process provided for in the 2010 Act re: consultation on the proposal.

The Council must do the following:

- a) publish this proposal paper in electronic and printed form;
- b) make the paper, and (so far as practicable) a copy of any separate documentation that it refers to, available for inspection at all reasonable times and without charge:
 - (i) at its head office and on its website; and
 - (ii) at any affected school or at a public library or some other suitable place within the vicinity of the school.
- c) provide without charge the information contained in this proposal paper:
 - (i) to such persons as may reasonably require that information in another form; and

- (ii) in such other form as may reasonably be requested by such persons.
- d) advertise the publication of the proposal paper by such means as it considers appropriate.

2. Correction of the proposal paper

- 2.1 Where, during the consultation period, the Council has been notified of an alleged omission of relevant information from a proposal paper or an alleged inaccuracy in a proposal paper the Council must proceed as follows:
 - a) determine if relevant information has (in its opinion) been omitted and whether there is (in fact) an inaccuracy;
 - b) inform the notifier of its determination under paragraph (a), and the reasons for that determination;
 - c) inform the notifier as to the action (if any) it is taking and of the reasons why it is, or is not, taking such action; and
 - d) invite the notifier to make representations to the Council if the notifier disagrees with the Council's determination under paragraph (a) or its decision as to whether to take action.
- 2.2 Where the notifier disagrees with the Council's determination under paragraph (a) or its decision as to whether to take action and makes representations about that, the Council may make a fresh determination if relevant information has been omitted and whether there is (in fact) an inaccuracy or make a fresh decision as to whether to take action.
- 2.3 The Council must inform the notifier if it makes a fresh determination referred to above, or if it makes a fresh decision as to whether to take action.
- 2.4 Where, having been notified by another person as described above, the Council determines that:
 - a) relevant information has been omitted from the proposal paper, or
 - b) there is (in fact) an inaccuracy in the proposal paper; and
 - c) where the Council discovers, during the consultation period that relevant information has been omitted from a proposal paper or discovers an inaccuracy in a proposal paper, the Council must proceed as follows:
- 2.5 Where the information that has been omitted or the inaccuracy relates to a material consideration relevant to the Council's decision as to implementation of the proposal, it must:
 - (i) publish a corrected proposal paper,
 - (ii) give revised notice in accordance with the 2010 Act and
 - (iii) send a copy of the corrected paper to Education Scotland, or

- (iv) issue a notice to the relevant consultees and Education Scotland providing the omitted information or, as the case may be, correcting the inaccuracy, and, if the Council considers it appropriate, extending the consultation period by such period as is reasonable by reference to the significance of the information provided or, as the case may be, the nature of the correction.

2.6 Where the information that has been omitted or the inaccuracy does not relate to a material consideration, the Council may, but is not obliged to, take steps (i)-(iii) or (iv) described above, and may also take no further action, except to report the inaccuracy/omission as required by the 2010 Act in the consultation report, which is referred to in more detail below.

2.7 Where, after the end of the consultation period, the Council issues a notice to the relevant consultees and Education Scotland providing the omitted information or correcting the inaccuracy, that notice may, instead of extending the consultation period, specify such further period during which representations may be made on the proposal as is reasonable by reference to the significance of the information provided or, as the case may be, the nature of the correction. Any such further period is to be treated as part of the consultation period for the purposes of the 2010 Act.

3 Consultation arrangements

3.1 As confirmed above, the present proposal is a relevant proposal for the purposes of the 2010 Act, and therefore the Council will adhere to the consultation process in the 2010 Act.

3.2 The consultation document, attached to this report as Appendix 2, provides background information to the catchment review. It details the proposal and indicates a timeframe for implementation should the proposal be approved.

3.3 The consultation document also includes the Council's Educational Benefits Statement.

4 Rationale for catchment review

4.1 In November 2012 a Section 75 agreement between the Council and BAE Systems made provision for development of a new primary school within the "Dargavel Village" site. Any new primary school provision will require a defined catchment area.

4.2 It is therefore proposed that the new primary school be built in Dargavel Village with a defined catchment area. It is proposed that this be created with a natural geographical boundary line formed between the new school and Bishopton Primary School by the railway line adjacent to Dargavel Village development. This will minimise the impact on the existing Bishopton Primary School catchment and will only affect one existing address Sachel Court Avenue.

4.3 The impact of this proposal is illustrated through existing and proposed catchment maps for Bishopton Primary School and the proposed new primary school within Dargavel Village and is attached as Appendix 3 to this report.

- 4.4 Additionally, a list of addresses currently affected by this alteration is detailed in Appendix 4 to this report. It should be noted that as the development expands and additional addresses are created these will also form part of the new primary school within Dargavel Village catchment area.
- 4.5 It is proposed that, if approved, the catchment changes would be implemented to take affect following construction of the new school which is anticipated will be in 2021.
- 4.6 If the proposal is approved then all pupils living in affected addresses would be entitled to continue attending Bishopton Primary school and if they are entitled to free school transport, in line with the Council's transport policy, then this entitlement would also continue.

Siblings of those pupils attending Bishopton Primary school would be entitled to attend the school with their sibling as long as their sibling is registered in the school when they enrol.

Free school transport for new primary 1 pupils would only be provided in instances where the pupil enrolls in the school at a time when their sibling still attends the school and where that sibling is entitled to free school transport.

5 Educational benefits statement

- 5.1 Under the 2010 Act where the Council has formulated a relevant proposal, the Council must prepare an educational benefits statement ("an EBS") in accordance with Sections 1 and 3 of the 2010 Act.

The EBS must include the following:

- a) the Council's assessment of the likely educational effects of a relevant proposal (if implemented) on:
 - (i) the pupils of any affected school;
 - (ii) any other users of the school's facilities;
 - (iii) any children who would (in the future but for implementation) be likely to become pupils of the school; or
 - (iv) the pupils of any other schools in the Council's area,
- b) the Council's assessment of any other likely effects of the proposal (if implemented),
- c) an explanation of how the Council intends to minimise or avoid any adverse educational effects that may arise from the proposal (if implemented),
- d) a description of the educational benefits which the Council believes will result from implementation of the proposal (with reference to the persons whom it believes will derive them), as well as the Council's reasons for coming to those beliefs.

- 5.1 The following paragraphs detail the Council's Educational Benefits Statement:

- 5.1.1 This catchment review means that all non-denominational primary pupils living in Dargavel Village will have the opportunity to attend their local non-denominational primary school. Provision for denominational primary pupils will remain as it is currently, within St John Bosco Primary School catchment.

- 5.1.2 All pupils affected by this catchment review would be entitled to continue attending the schools they are currently in. However, Children's Services would provide transition support to any pupils opting to change school as a result of this proposal.
- 5.2 Improvements in the curriculum:
 - 5.2.1 A new school building would be designed to support the full breadth of the curriculum. It will provide spaces for teacher directed learning; breakout areas for independent or small group learning; immediate access to the outdoors; and it will facilitate the full range of learning experiences necessary for the development of skills.
 - 5.2.2 The IT infrastructure within the school will contribute to the development of digital literacy and as IT becomes more mobile, the IT strategy will evolve to ensure it continues to meet the needs of the school community.
 - 5.2.3 Playground and social gathering areas will be designed to provide the most favourable play and learning environments; encouraging different kinds of energetic play and easy access to outdoor learning opportunities.
 - 5.2.4 Garden areas will be provided to enhance pupil participation in outdoor education; further supporting learning about the natural environment and environmental issues.
 - 5.2.5 Flexible working spaces and staff development facilities within the building will enhance collegiality and promote working practices which will respond to the expertise and interests of staff.
 - 5.2.6 The open environment will provide enhanced opportunities for formal and informal peer and management observations.
- 5.3 Providing greater personalisation and choice:
 - 5.3.1 The layout of the building will support staff to provide opportunities for pupils to take responsibility for their learning.
 - 5.3.2 Well planned storage solutions will support pupils to make meaningful choices and decisions about their learning.
 - 5.3.3 The open environment will allow for more active learning and support pupils in organising their own experiences.
 - 5.3.4 With immediate access to the outdoors, and minimisation of circulation spaces and doors, the building will support free flow learning.
- 5.4 Supporting the personal, social, health, emotional and additional support needs of children:
 - 5.4.1 A bright, naturally ventilated environment, which supports active learning, energises the learning community and will support the wellbeing of all its users.
 - 5.4.2 Dining areas will be welcoming, naturally ventilated areas with immediate access to outdoor dining and the IT infrastructure allows for cashless catering arrangements which will enhance the inclusive ethos of the school while supporting the efficient management of dining sittings.

- 5.4.3 PE facilities will be designed to meet the needs of the school community; providing for a range of indoor and outdoor activities and 2 hours of PE per week.
 - 5.4.4 Nurture and quiet spaces will be provided to support the emotional wellbeing of pupils with additional support needs.
 - 5.4.5 The building will be compliant with the provisions of the Equality Act (2010).
 - 5.5 Improving morale and ethos within the school:
 - 5.5.1 The design principles for the building will reflect the school's vision, values and aims and they will be informed by the school's socio, economic and cultural context.
 - 5.5.2 The open environment and assembly spaces will provide opportunities for whole school activity and the promotion of the school's promoting positive behaviour ethos.
 - 5.5.3 The open environment will enhance stage to stage transition and support positive caring relationship (buddy) systems across all stages of the school.
 - 5.6 Facilitating travel and transport arrangements:
 - 5.6.1 The new primary school within Dargavel Village will be within walking distance of the addresses affected by this proposal it will be possible for those pupils, who are currently transported to Bishopton Primary, to walk to school; encouraging a more active lifestyle which will improve the health and wellbeing of some pupils.
 - 5.6.2 Traffic management schemes will promote positive and considerate behaviour around the school grounds and safe drop off facilities to ensure appropriate levels of pedestrian / vehicular segregation.
-

6 Impact on schools and their communities

- 6.1 Catchment review forms part of the Council's School Estate Management Planning process and equality impact assessment is central to this approach.
 - 6.2 The recommendations contained within this report will therefore be assessed in relation to their potential impact on equalities and human rights as part of the consultative process.
-

7 Involvement of Education Scotland

- 7.1 A copy of this proposal has been sent to Education Scotland.
- 7.2 At the end of the formal consultation period Children's Services will send Education Scotland the following:
 - a) a copy of all relevant written representations that are received from any person during the consultation period;
 - b) a summary of any oral representations made by any person during the public meeting;
 - c) a copy of any other relevant documentation, as available and so far, as practicable.

- 7.3 Education Scotland will provide the Council with a report on the educational aspects of this proposal. This report will be submitted to the Council no later than 3 weeks after Children's Services have sent them all of the representations and documents noted above, or such longer period as the Council may agree with Education Scotland.
- 7.4 In preparing their report, Education Scotland may visit establishments affected by the proposal and may make reasonable enquiries of such persons (both in the in the establishments and outwith) as they consider appropriate.
-

8 Consultation report Consultation report

- 8.1 After receiving the report from Education Scotland, Children's Services will review the proposal having regard (in particular) to the following:
- a) Written representations received by the Council from any person during the consultation period;
 - b) Oral representations received by the Council from any person at the public meeting;
 - c) the report provided by Education Scotland.
- 8.2 Thereafter the service will prepare a consultation report for consideration by the education and children's services policy board.
- 8.3 The consultation report will contain the following:
- a) a record of the total number of any written representations made to the Council (by any person) on the proposal during the consultation period;
 - b) a summary of:
 - (i) those written representations; and
 - (ii) any oral representations made to it (by any person) at the public meeting.
 - c) a statement of the Council's response to:
 - (i) those written and oral representations; and
 - (ii) Education Scotland's report.
 - d) a copy of that report
 - e) a statement explaining how the Council complied with its obligation to review the relevant proposal as described above.

8.4 The consultation report will also include the following:

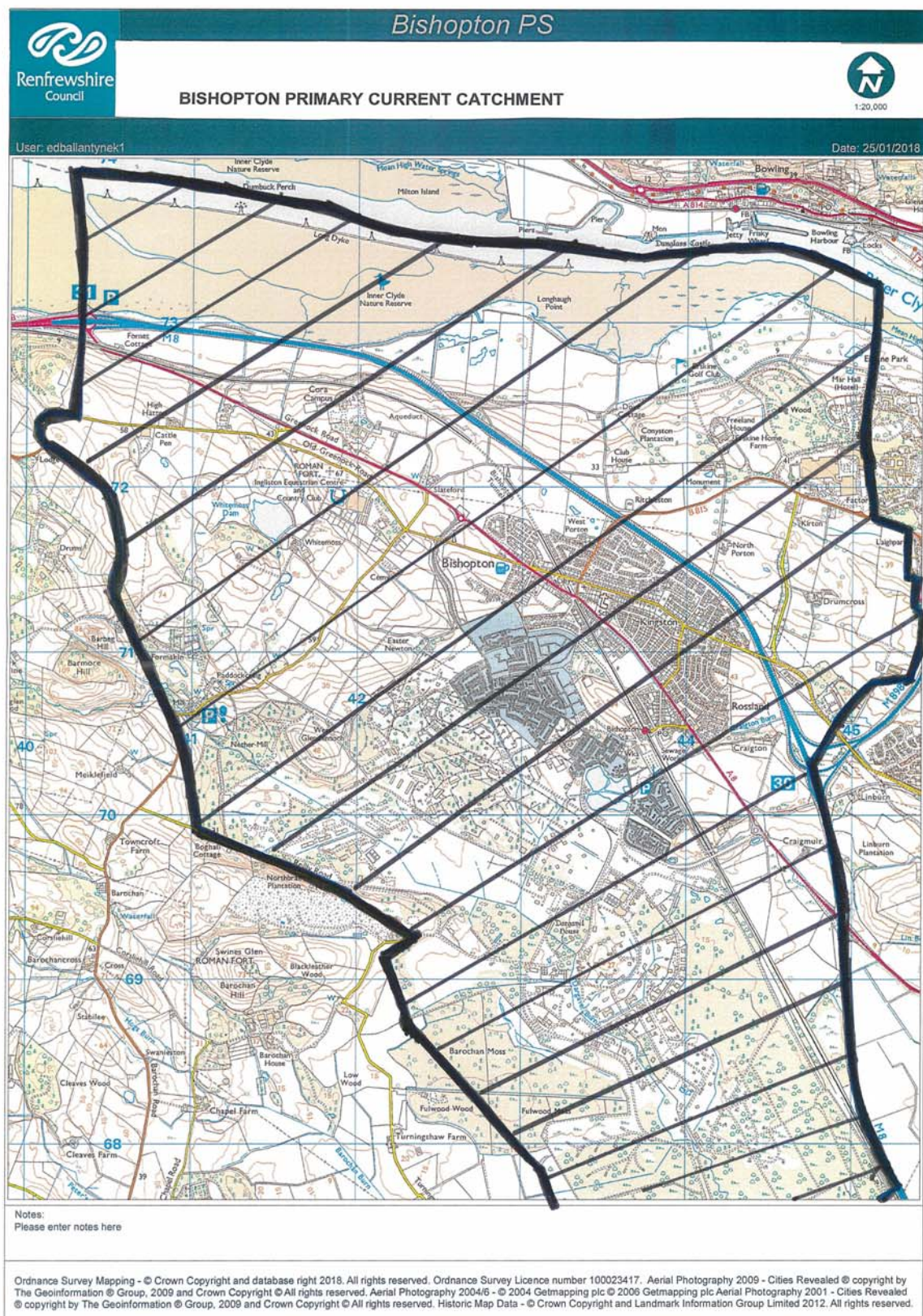
- a) details of any omission/inaccuracy in the proposal paper, or (as the case may be) any alleged omission/inaccuracy, (including a statement of the Council's opinion on it);
- b) a statement of the action taken in respect of the omission or inaccuracy, or (as the case may be) the alleged omission/inaccuracy, or, if no action has been taken, of that fact (and why); and
- c) any representations made to the Council where the person who made the notification re: omission/inaccuracy disagreed with the Council's determination as to whether there had been an omission/inaccuracy, or its decision as to whether to take action.

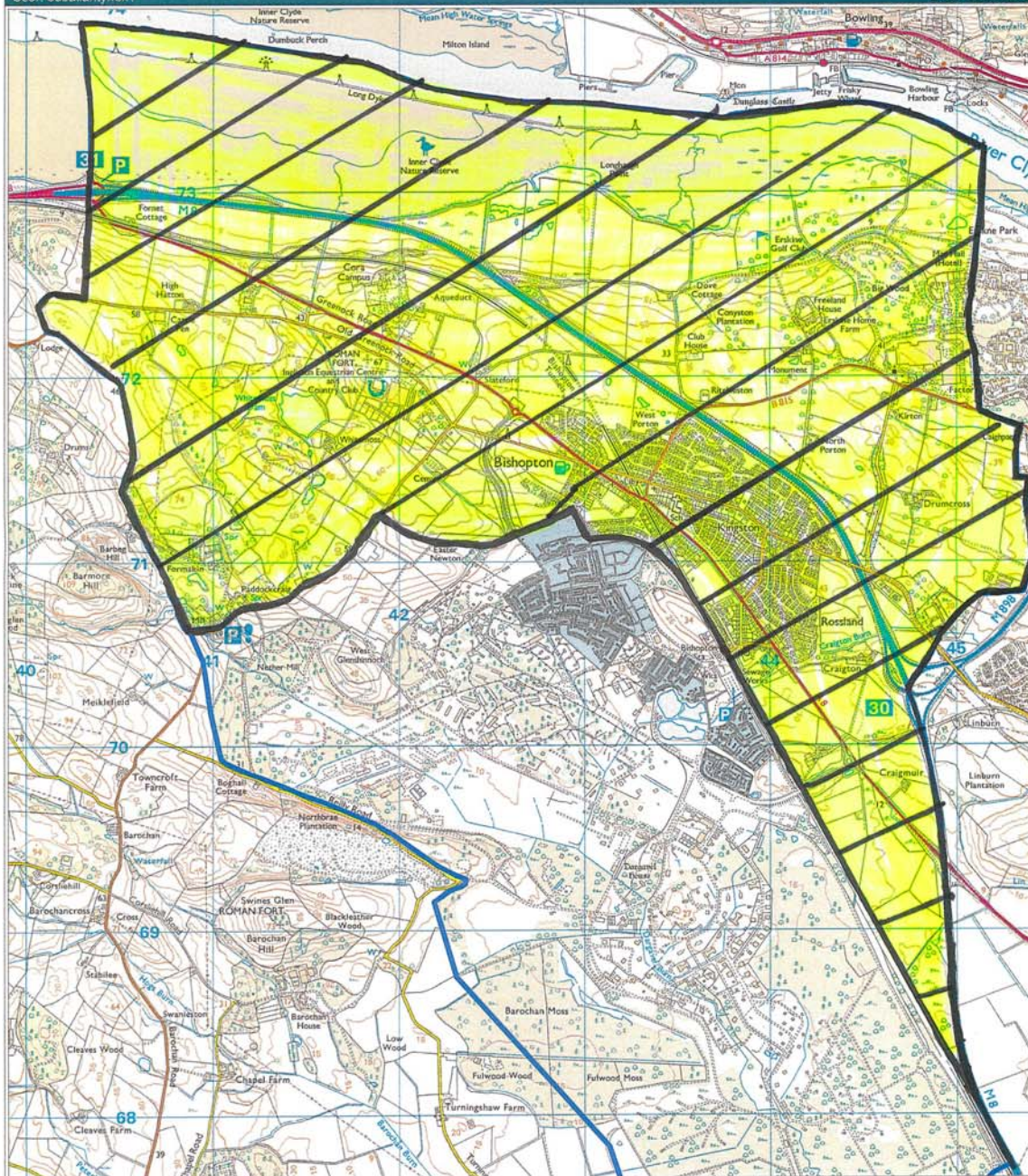
8.5 The Council must:

- a) publish the consultation report in both electronic and printed form;
- b) make the report available for inspection at all reasonable times and without charge:
 - (i) at its head office and on its website; and
 - (ii) at any affected school or at a public library or some other suitable place within the vicinity of the school.
- c) provide without charge the information contained in the consultation report:
 - (i) to such persons as may reasonably require that information in another form; and
 - (ii) in such other form as may reasonably be requested by such persons.
- d) inform any person who during the consultation period made written representations on the relevant proposal of the publication of the consultation report; and
- e) advertise the publication of the consultation report by such means as it considers appropriate.

8.6 The time line and summary of the consultation process in respect of this proposal is set out below:

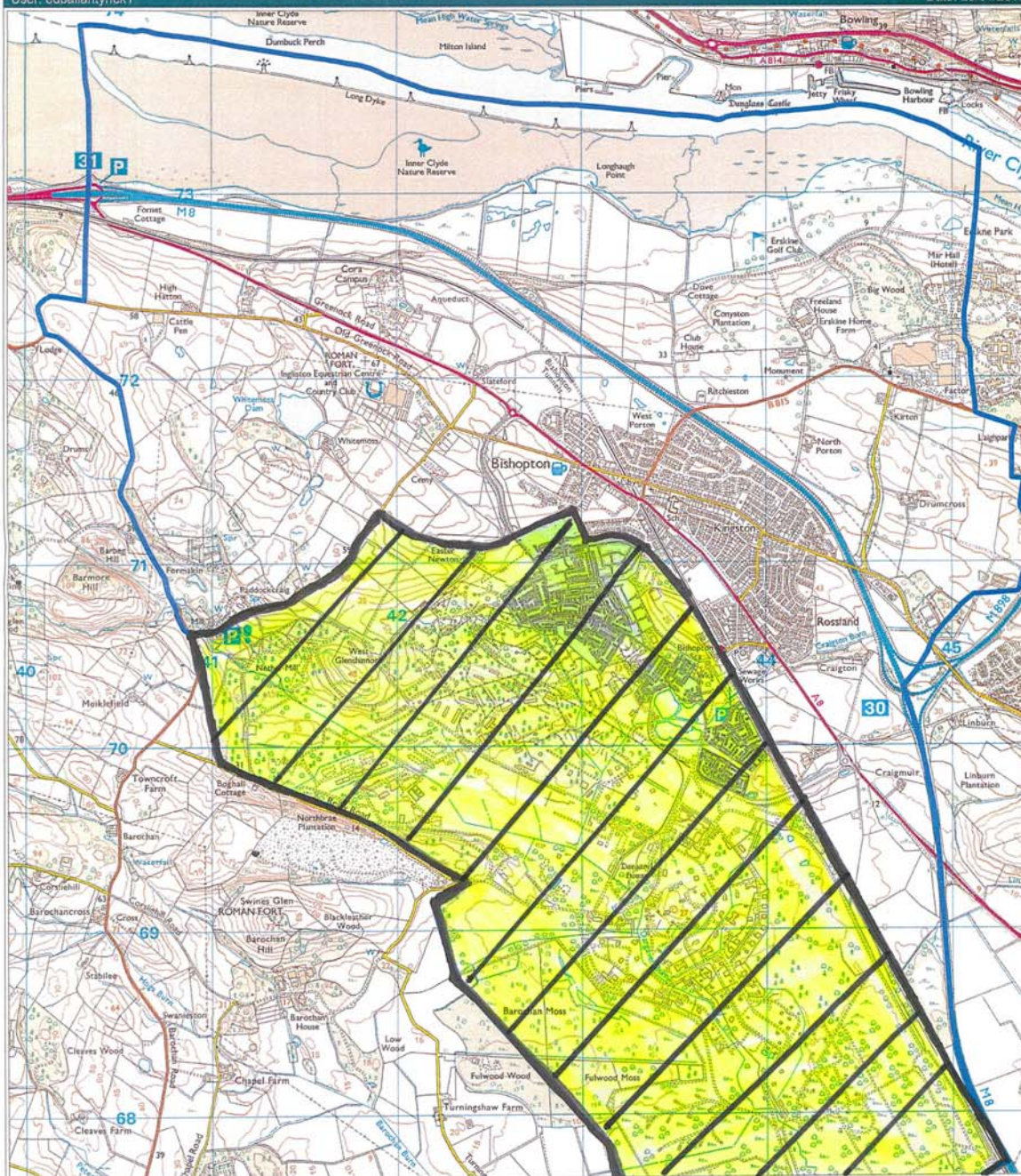
Activity	Date
Approval for consultation sought from Education and Children's Services policy board	17 January 2019
<p>Consultation document to be issued outlining the proposal to:</p> <ul style="list-style-type: none"> the parent council or combined parent council of any affected schools; the parents of the pupils at any affected school; the parents of any children who would be likely to become pupils at the affected schools expected by the education authority to attend any affected school within 2 years of the date of publication of the proposal paper; the pupils at any affected school (in so far as the education authority considers them to be of a suitable age and maturity); the staff (teaching and other) at any affected school; any trade union which appears to the education authority to be representative of the staff (teaching and other) at any affected school; the community council (if any); the community planning partnership for the area of the local authority in which any affected school is situated and any other community planning partnership that the education authority considers relevant; any other education authority that the education authority considers relevant; and any other community groups using any of the affected schools. 	28 January 2019
Advert to advise of public consultation meeting and the commencement of the formal consultation period issued via local press.	28 January 2019
<ul style="list-style-type: none"> Public consultation meeting held to consult with affected community; and Questionnaire to go live on the Council website. 	5 February 2019
Public consultation period ends 6 weeks after the date of the public meeting. The total period excludes any school holidays or in-service days.	26 March 2019
Report to Education Scotland on outcome of consultation.	24 April 2019
Response from Education Scotland on outcome of consultation.	17 May 2019
Consultation response report (including Education Scotland response) presented to Education and Children's Services policy board meeting stating consultation outcomes and making final recommendation.	22 August 2019
Copy of proposal paper and consultation response report sent to Scottish Ministers within 6 days of education and children's services policy board approval.	29 August 2019





Notes:
Please enter notes here

Ordnance Survey Mapping - © Crown Copyright and database right 2018. All rights reserved. Ordnance Survey Licence number 100023417. Aerial Photography 2009 - Cities Revealed © copyright by The GeoInformation © Group, 2009 and Crown Copyright © All rights reserved. Aerial Photography 2004/6 - © 2004 Getmapping plc © 2006 Getmapping plc Aerial Photography 2001 - Cities Revealed © copyright by The GeoInformation © Group, 2009 and Crown Copyright © All rights reserved. Historic Map Data - © Crown Copyright and Landmark Information Group Limited 2012. All rights reserved.



Notes:
Please enter notes here

Ordnance Survey Mapping - © Crown Copyright and database right 2018. All rights reserved. Ordnance Survey Licence number 100023417. Aerial Photography 2009 - Cities Revealed © copyright by The GeoInformation © Group, 2009 and Crown Copyright © All rights reserved. Aerial Photography 2004/6 - © 2004 Getmapping plc © 2006 Getmapping plc Aerial Photography 2001 - Cities Revealed © copyright by The GeoInformation © Group, 2009 and Crown Copyright © All rights reserved. Historic Map Data - © Crown Copyright and Landmark Information Group Limited 2012. All rights reserved.

Streets Affected - Bishopton Primary School and a New Primary School to be built at Dargavel Village

Addresses at November 2018

Acer Drive
Barbeg Crescent
Barmore Crescent
Barmore Drive
Barmore Wynd
Barrangary Road
Boghall Drive
Boghall Place
Bolerno Avenue
Bolerno Circle
Bolerno Crescent
Bolerno Gardens
Bolerno Place
Bolerno Wynd
Cherrytree Gardens
Craigmuir Drive
Craigmuir Road
Craigmuir Way
Craigton Drive
Crosshill Avenue
Crosshill Mews
Crosshill Road
Crosshill Wynd
Forge Crescent
Forge Way
Gatehead Avenue
Gatehead Crescent
Gatehead Drive
Gatehead Grove
Gatehead Wynd
Lochside Avenue
Lochview Wynd
Millbank Avenue
Millbank Circle
Millbank Crescent
Millbank Drive
Mosshall Drive
Northbrae Drive
Slateford Road
Sachel Court Avenue

The development is still under construction and more addresses may be added to this list, which fall within the boundary of the development site.

Equality Impact Assessment relating to:

Catchment Review: Bishopton Primary School and New Primary School to be built at Dargavel Village

Officer and department responsible for completing the assessment.	Alison Gallagher, Children's Services
Name of policy, strategy or project.	Proposal to consult on a catchment review affecting Bishopton Primary School and New Primary School to be built at Dargavel Village
What is the main purpose or aims of the policy, strategy or project?	To create a catchment area for the new Dargavel village area.
Who will be the beneficiaries of the policy/strategy/project?	This strategy would specifically affect the Bishopton and Dargavel Village School communities.
Has the policy/strategy/project been explained to those it might affect directly or indirectly?	<p>Yes. This has been undertaken through a formal consultation which highlighted the challenges to current catchment area.</p> <p>Written representation were made to The Director of Children's Services, Renfrewshire Council, Cotton Street, Paisley, PA1 1LE.</p> <p>All participants were provided with an equalities proforma which provided the opportunity to record any concerns relating to this proposed strategy; no responses were received in this respect. Additionally this proforma was made available on-line; again no responses were received.</p> <p>In line with the requirements of the Schools (Consultation) (Scotland) Act 2010, amended through the enactment of the Children and Young People (Scotland) Act 2014, a formal consultation was undertaken during February and March 2019.</p> <p>This included a public consultation meeting which took place on 5 February 2019; members of the public attended this meeting and no adverse responses were received in this respect. An equalities proforma was made available; again no responses were received.</p>
Have you consulted on the policy?	As above.

Complete the following table and give reasons/comment where:

- a) The policy/strategy/project could have a positive impact on any of the equality target groups or contributes to promoting equality, equal opportunities and improving relations with equality target groups.
- b) The policy/strategy/project could have a negative impact on any equality target groups. (If the impact is high a full EIA should be completed)

Equality group	Positive impact		Negative impact		Reason/comment
	High	Low	High	Low	
Race		✓		✓	
Sex		✓		✓	
Disability		✓		✓	
Religion / Belief		✓		✓	
Sexual Orientation		✓		✓	
Age		✓		✓	
Gender Reassignment		✓		✓	
Marriage and Civil Partnership		✓		✓	
Pregnancy and Maternity		✓		✓	

Report by Education Scotland addressing educational aspects of the proposal by Renfrewshire Council to revise catchment arrangement between Bishopton Primary School and a new primary school to be built at Dargavel Village.

May 2019

1. Introduction

- 1.1 This report from Education Scotland has been prepared by Her Majesty's Inspectors of Education (HM Inspectors) in accordance with the terms of the [Schools \(Consultation\) \(Scotland\) Act 2010](#) ("the 2010 Act"). The purpose of the report is to provide an independent and impartial consideration of Renfrewshire Council's proposal to revise catchment arrangements between Bishopton Primary School and a new primary school to be built at Dargavel Village. Section 2 of the report sets out brief details of the consultation process. Section 3 of the report sets out HM Inspectors' consideration of the educational aspects of the proposal, including significant views expressed by consultees. Section 4 summarises HM Inspectors' overall view of the proposal. Upon receipt of this report, the Act requires the council to consider it and then prepare its final consultation report. The council's final consultation report should include this report and must contain an explanation of how, in finalising the proposal, it has reviewed the initial proposal, including a summary of points raised during the consultation process and the council's response to them. The council has to publish its final consultation report three weeks before it takes its final decision.
- 1.2 HM Inspectors considered:
- the likely effects of the proposal for children of the schools; children likely to become pupils within two years of the date of publication of the proposal paper;
 - any other likely effects of the proposal;
 - how the council intends to minimise or avoid any adverse effects that may arise from the proposal; and
 - the educational benefits the council believes will result from implementation of the proposal, and the council's reasons for coming to these beliefs.
- 1.3 In preparing this report, HM Inspectors undertook the following activities:
- consideration of all relevant documentation provided by the council in relation to the proposal, specifically the educational benefits statement and related consultation documents, written and oral submissions from parents and others; and
 - visits to the site of Bishopton Primary School, including discussion with relevant consultees.

2. Consultation process

- 2.1 Renfrewshire Council undertook the consultation on its proposal(s) with reference to the [Schools \(Consultation\) \(Scotland\) Act 2010](#).
- 2.2 The statutory consultation period ran from 5 February 2019 until the 26 March 2019. Communication was issued to all stakeholders including parents of every pupil at Bishopton Primary School, the Parent Council, pre-school providers in the area and elected members, MSPs and MPs for the Renfrewshire area. Copies of the consultation document were available at local libraries and on the council website. A public meeting, advertised in the local press, was held on the 5 February 2019 in Bishopton Primary School.
- 2.3 The public meeting was attended by 62 members of the public. In addition, 64 responses were received through the online survey, questionnaires and one by email. These included 46 from parents. Of the 64 responses to the online survey and questionnaires, 54 were in favour and ten against the proposed catchment areas. The main areas of concern raised through these responses and from parents who met with HM Inspectors were the risk of dividing the community in two, along old village and new build lines, and that for some children the proposed boundary would mean that they do not attend their closest school geographically.

3. Educational aspects of proposal

- 3.1 The council outlines in general terms how the proposal to build a new school will provide potential benefits to children who will attend. The other significant educational benefit arises from how the development of a second primary school in the Bishopton area will address capacity pressures at Bishopton Primary School. Parents and staff of Bishopton Primary School look forward to having more capacity as the school roll reduces once the school in Dargavel is open. The proposal outlines the potential benefits with regard to the accommodation and resources provided within the new school. However, the proposal does not outline the educational benefits to Bishopton Primary School once the new school at Dargavel is established. This will be helpful information for parents going forward.
- 3.2 Almost all parents who responded, including those who met HM Inspectors, agree with the proposed catchment boundaries. They recognise that the proposed boundaries are sensible and likely to ensure safe walking routes to school. However, the proposal paper does not outline the location of the new school within the new housing development. This would have been helpful information for parents in considering safe walking routes. Stakeholders raised the issue that for some children the proposed boundary is likely to mean that they do not attend their closest school geographically.
- 3.3 Stakeholders, including some of the parents and pupils HM Inspectors met, are concerned about the potential for the proposed boundary to split the village into two areas; the old village and the new housing development. They would welcome the opportunity to work with the council to support both community coherence and a consistency of educational approaches once the new primary school opens. Parents, pupils and existing school staff are keen that both Bishopton Primary School and the primary school in Dargavel work together closely in the future to serve the children of the area.

- 3.4 Parents value the information they receive from the Parent Council in regard to the planned changes. There is a need to ensure full and clear communication with stakeholders, including parents of current and future pupils of both schools with regard to the location and development of the new school, the process of the transition of pupils from one to two schools, and the changes this will mean for the existing primary school.
- 3.5 Parents with children currently at Bishopton Primary School welcome that the proposal makes it clear that those pupils currently attending Bishopton Primary School will be entitled to continue attending and if they are entitled to free school transport then this entitlement will also continue. They also value the commitment from the council regarding siblings of children already registered at Bishopton Primary School.

4. Summary

Overall, Renfrewshire Council's proposal to review the catchment area of Bishopton Primary School and a new primary school to be built at Dargavel Village offers potential educational benefit by providing a newly built school in Dargavel Village whilst also addressing capacity issues at Bishopton Primary School. The proposed boundary between the two catchment areas is clear, has the support of most stakeholders and is likely to provide for safe walking routes to school. There is an ongoing need to ensure full and clear communication with stakeholders, including parents of current and future pupils of both schools, with regard to the location and development of the new school and the transition process for children. There will also be a need to work with both schools and relevant stakeholders to support community coherence once the new primary school opens.

**HM Inspectors
May 2019**