

GLASGOW CITY REGION CITY DEAL

The City Deal in Renfrewshire Strategic Business Cases





Process for Submission and Approval of Business cases



Assurance Framework (AF)

- AF Governs process for decision making and delivery of City Deal
- Approved by City Deal Cabinet on 17 March 2015
- Approved by UK & SG Ministers on 27 March 2015
- “Live” from 1 April 2015
- Part 1 – Cabinet Governance Structure and Role of Groups
- ***Part 2 – Business Cases and Project and Programme Outputs***
- Part 3 – Programme and Project Management Arrangements



Business Cases

- Purpose of City Deal Project Business Case
 - Provide a framework for informed decision making in planning and management of the project, the wider programme and subsequent benefits realisation
 - Provide a clear and concise record of the current status of the project and decisions made to date



Business Cases

- 3 stages of Business Case required by City Deal
 - Strategic Business Case (SBC)
 - Approval of SBC gives permission to develop OBC
 - Outline Business Case (OBC)
 - Approval of OBC gives permission to implement Procurement up to, but not including, selection of preferred Contractor
 - Full Business Case (FBC)
 - Approval of FBC gives permission for investment including awarding of contract



Business Cases

Approval & Appraisal Process

- Business Cases to be ***approved by Member Authority*** before being submitted to Programme Management Office (PMO) for assessment
- PMO Appraisal Team assess and scrutinise Business Cases
- PMO produce Appraisal Report outlining criteria which have been met and indicating where further information is required
- Business Cases which have met all criteria are recommended by PMO for approval to Chief Executives Group
- Chief Executives Group decide whether Business Case should progress to City Deal Cabinet for approval



Strategic Business Cases

Purpose of Strategic Business Case (**SBC**)

- **SBC** prepared at '**Scoping Stage**' of project:
 - To confirm the strategic context of proposal
 - To make a robust case for change
 - To provide Stakeholders with an early indication of proposed way forward

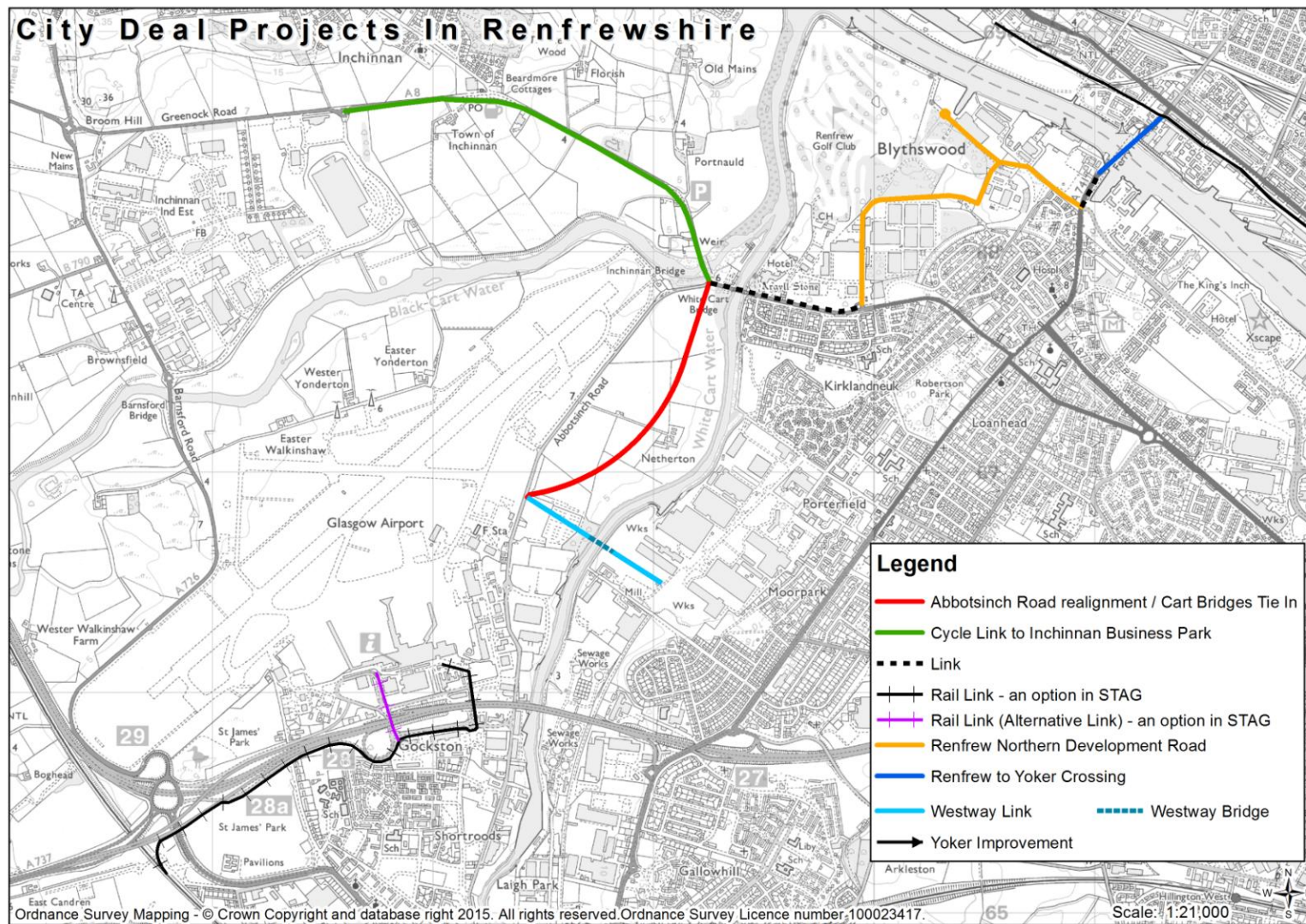


Glasgow Airport Investment Area

- Roads, walking & cycling links, environmental improvements, bridge at White Cart
- Renfrewshire Council project
- Key Stakeholders
 - Glasgow Airport
 - Westway
 - Others
- Infrastructure Costs £51m
- Start on site 2017
- Completion Year 2025



Project locations



**Clyde Waterfront & Renfrew
Riverside Project**

**Airport Access
Project**

Glasgow Airport Investment Area

Project Locations

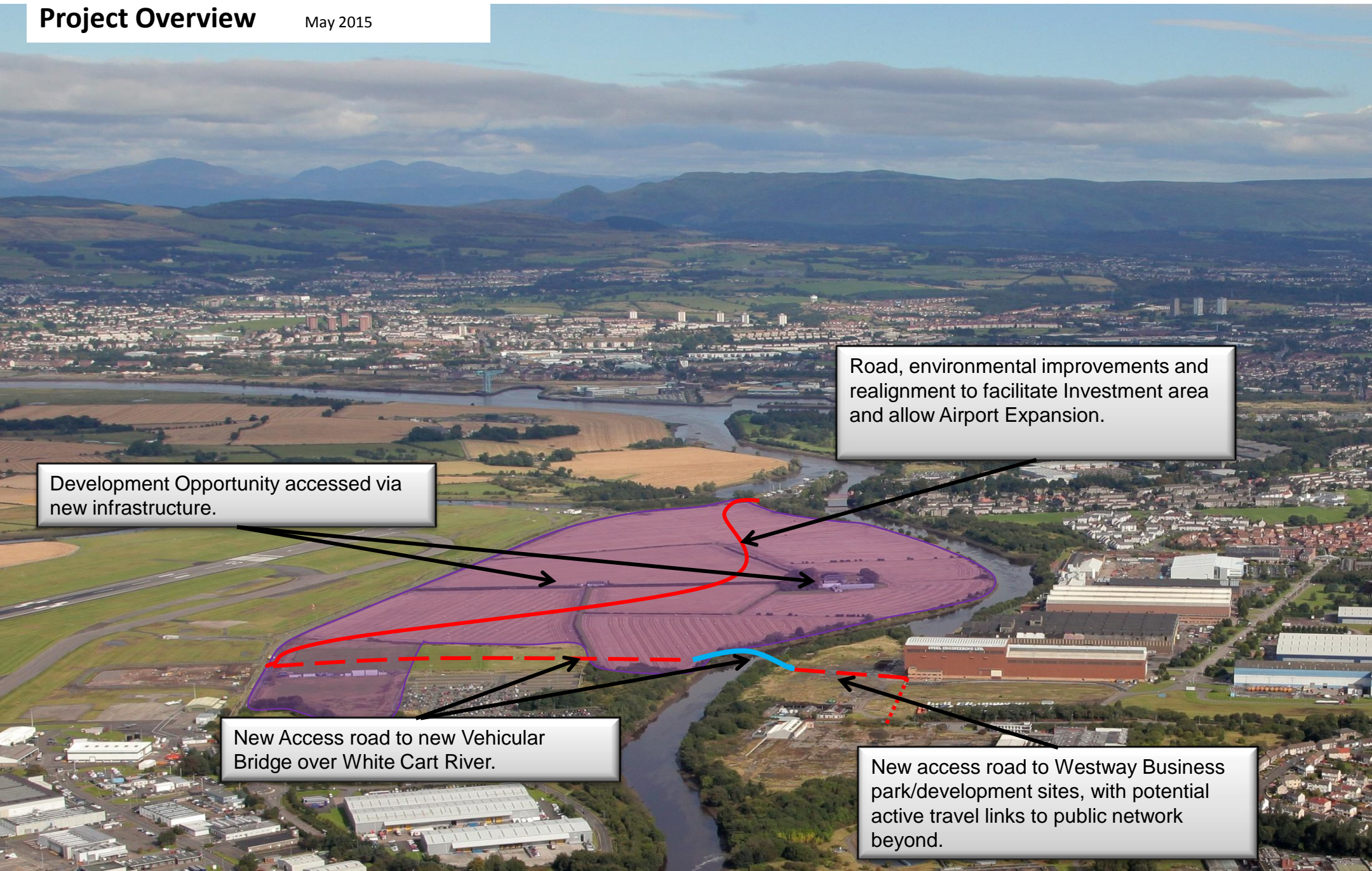
Legend

- ■ ■ Clyde Crossing
- Existing Road
- Renfrew Northern Development Road
- Westway Bridge
- Harbour Road Link
- ■ > Connectivity Improvements
- Abbotsinch Road realignment / Cart Bridges Tie In
- Cycle Link to Inchinnan Business Park
- Westway Link
- Rail-link Option
- ■ ■ Braehead Masterplan - Mixed
- Development Site - Class 4
- Development Site - Class 5, 6
- Development Site - Class 6
- Development Site - Commercial
- Housing Development Site
- ■ ■ Westway Masterplan - Mixed

Glasgow Airport Investment Area

Project Overview

May 2015



Development Opportunity accessed via new infrastructure.

Road, environmental improvements and realignment to facilitate Investment area and allow Airport Expansion.

New Access road to new Vehicular Bridge over White Cart River.

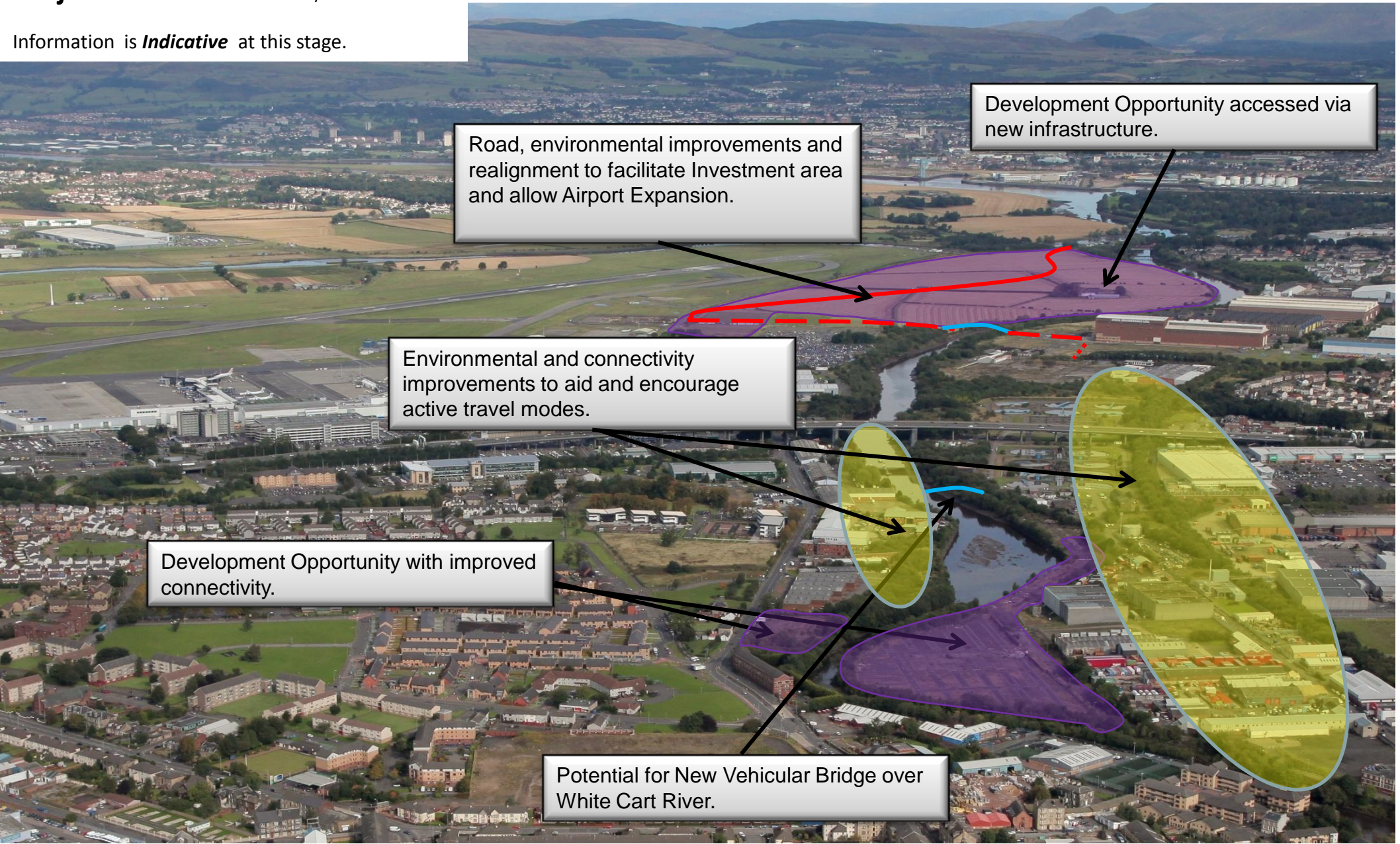
New access road to Westway Business park/development sites, with potential active travel links to public network beyond.

Glasgow Airport Investment Area

Project Overview

May 2015

Information is *Indicative* at this stage.



Road, environmental improvements and realignment to facilitate Investment area and allow Airport Expansion.

Development Opportunity accessed via new infrastructure.

Environmental and connectivity improvements to aid and encourage active travel modes.

Development Opportunity with improved connectivity.

Potential for New Vehicular Bridge over White Cart River.



Clyde Waterfront / Renfrew Riverside

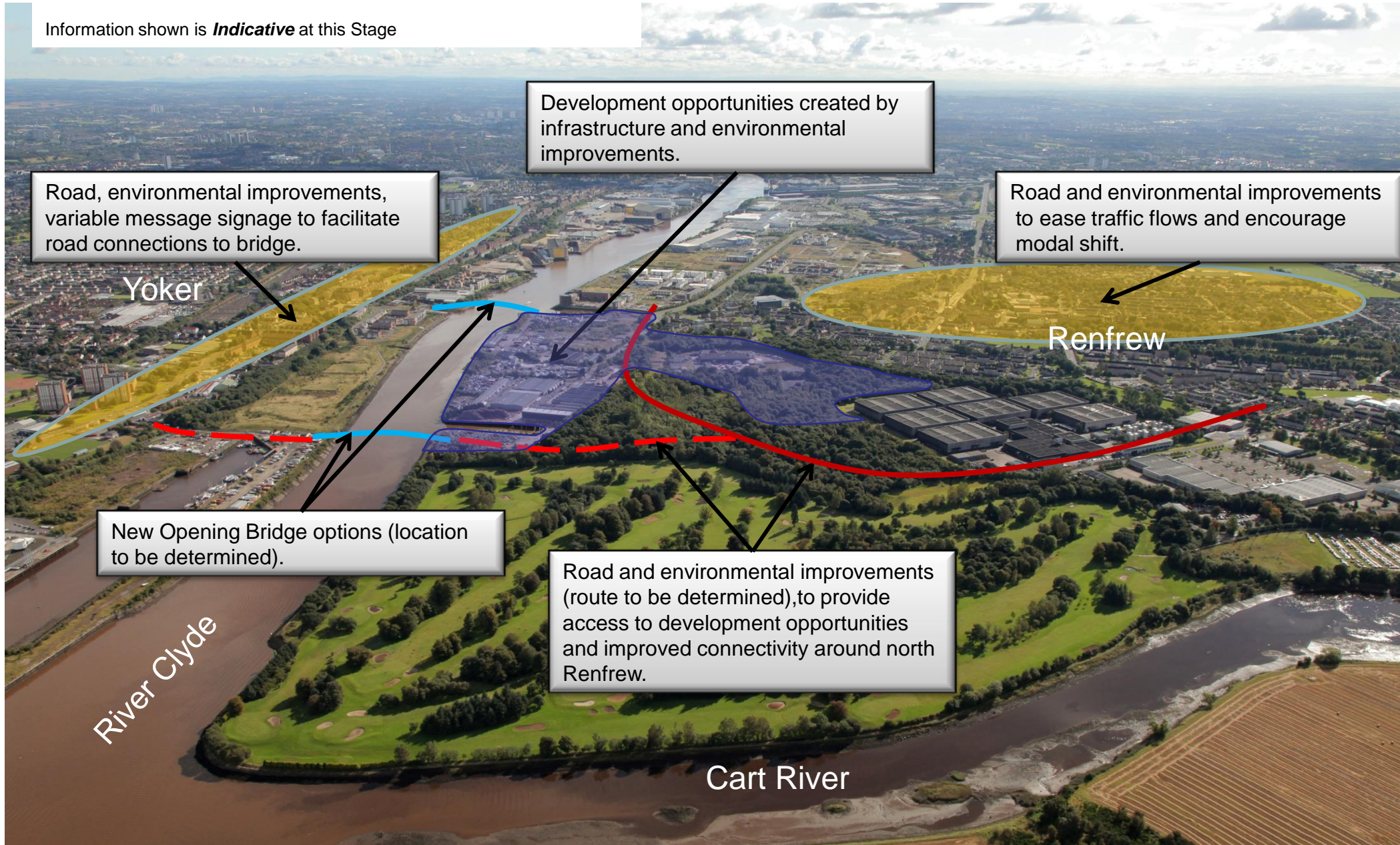
- Opening bridge over River Clyde in the vicinity of Yoker to Renfrew Ferry and roads infrastructure
- Renfrewshire Council project with north part of bridge within Glasgow City Council boundary
- Operation and Maintenance Requirement
- Key Stakeholders
 - Peel Ports (Clyde Port)
 - Glasgow City Council
 - Others
- Infrastructure Costs £78m
- Start on site 2018
- Completion Year 2020



Clyde Waterfront & Renfrew Riverside Project Overview

May 2015

Information shown is **Indicative** at this Stage





Next Steps

- Clear focus on how projects will deliver economic benefits
- Continue to develop & refine scope of projects to ensure benefits for Renfrewshire are maximised
- Continue to engage with Stakeholders & Businesses to develop optimum scope
- Land Use/ Initial Master Planning exercise to help inform project scope
- Procurement of Professional Services for both projects commenced (OJEU Process)
- Work towards development of Outline Business Case

Glasgow & Clyde Valley City Deal

