



To: Economy and Jobs Policy Board

On: 3rd February 2016

Report by: Director of Development and Housing Services

Heading: Labour Market Update

1. Summary

- 1.1 This paper provides the Policy Board with the most recent labour market statistics for Renfrewshire (end of December 2015). Where the data is available a comparison is made with the Scottish and UK figures.
-

2 Recommendations

Board members are asked to:

- (i) Note the contents of the report and the improving unemployment figures across Renfrewshire.
-

3. Background

- 3.1 The report provides the current Job Seeker's Allowance (JSA) claimant figures for the end of December 2015.
- 3.2 The attached newsletter also outlines the latest performance statistics for Invest in Renfrewshire and recent economic developments across Renfrewshire.
-

4. Labour Market Statistics for the month of December 2015

- 4.1 Renfrewshire's overall Job Seekers Allowance (JSA) figure for December 2015 is 1.9% with 2015 people claiming JSA. While this is still higher than the Scottish and UK average figures it represents a significant fall from 2.7% at the same time last year.
- 4.2 Renfrewshire's reduction in youth unemployment has been one of the biggest across Scotland. The December 2014 rate was 3.8% and this has fallen to 1.6% for December 2015. This month the rate decreased by 0.3% which is greater than the Scottish and UK average reductions.
- 4.3 For the third month running Renfrewshire has a youth JSA rate which is below both the Scottish and UK average.
- 4.4 Adult unemployment for JSA Claimants aged 25 – 49 has remained static at 2.2% with 1,250 people claiming JSA. The rate was higher this time last year at 3.0%.
- 4.5 The adult JSA rates for those aged 50+ has remained static from last month at 1.7%.

5. Annual Population Survey Headlines

- 5.1 The annual ONS population survey was published in September last year.
- 5.2 The main headlines for Renfrewshire is that due to an increase in female employment the overall rate of employment is at its highest level in recent years having increased 8.4 percentage points from a low in 2011.
- 5.3 Renfrewshire also has one of the highest rates of employment amongst 16-24 year olds across Scotland having increased 25.1 percentage points from a low in 2012. Renfrewshire's ranking for youth employment moved from 27th place to 4th over the June 2012 – June 2015 period.
- 5.4 The rate of ***economic inactivity*** in Renfrewshire to the end of June 2015 was **21%** compared to the Scottish average of **22.4%**. In Renfrewshire this represented a ***decrease*** of **1.1%** on the previous year and a ***fall*** of **3.6 percentage points since 2011**.
- 5.5 The rate of **employment amongst females** in Renfrewshire to the end of June 2015 of 74.4% is **the highest since** at least 2005 when it was 68.3%. It also represents a 7.8 percentage point increase on the 2014 figure, **the highest change of any Scottish local authority**, and is 4.5 percentage points higher than the end of June 2015 female Scottish average of 69.9%. It is the **sixth highest** local authority female employment rate in Scotland.

- 5.6 The attached newsletter contains additional statistical information as well as the most up to date statistics on the Invest in Renfrewshire programme.
-

Implications of the Report

1. **Financial** - None
 2. **HR & Organisational Development** – None
 3. **Community Planning – Jobs and the Economy** - Labour market intelligence is vital to informing future policy and service delivery decision making across the Community Planning Partnership.
 4. **Legal** – None
 5. **Property/Assets** – None
 6. **Information Technology** – None
 7. **Equality & Human Rights** -
The Recommendations contained within this report have been assessed in relation to their impact on equalities and human rights. No negative impacts on equality groups or potential for infringement of individuals' human rights have been identified arising from the recommendations contained in the report because it is for noting only.
 8. **Health & Safety** – None.
 9. **Procurement** – None
 10. **Risk** – None
 11. **Privacy Impact** - None
-

List of Background Papers

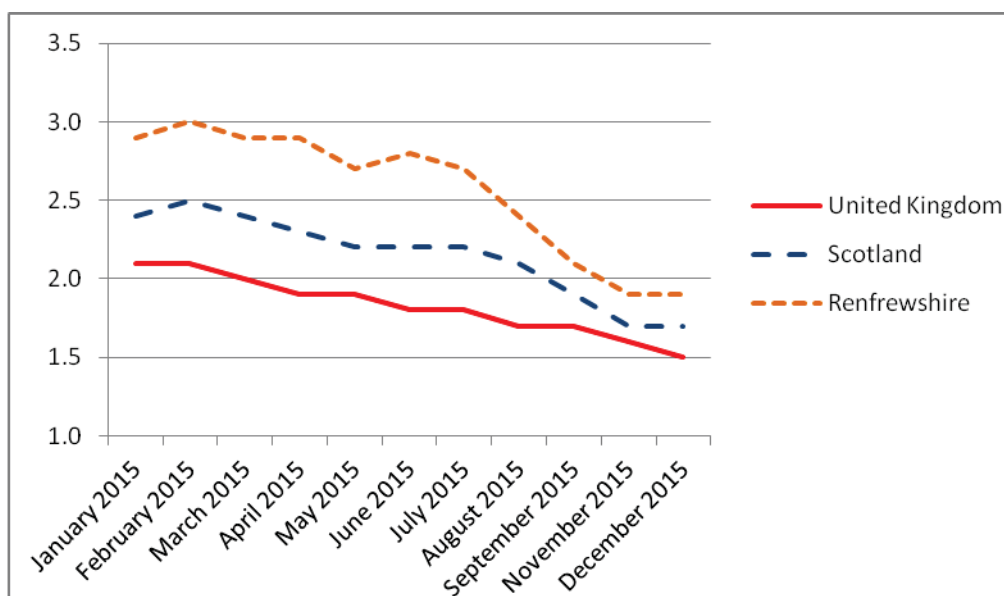
- (a) None
-

Author: Ruth Cooper, Economic Development Manager
ruth.cooper@renfrewshire.gov.uk
Tel: 0141 618 7868

Renfrewshire Economic Development Newsletter – January 2016

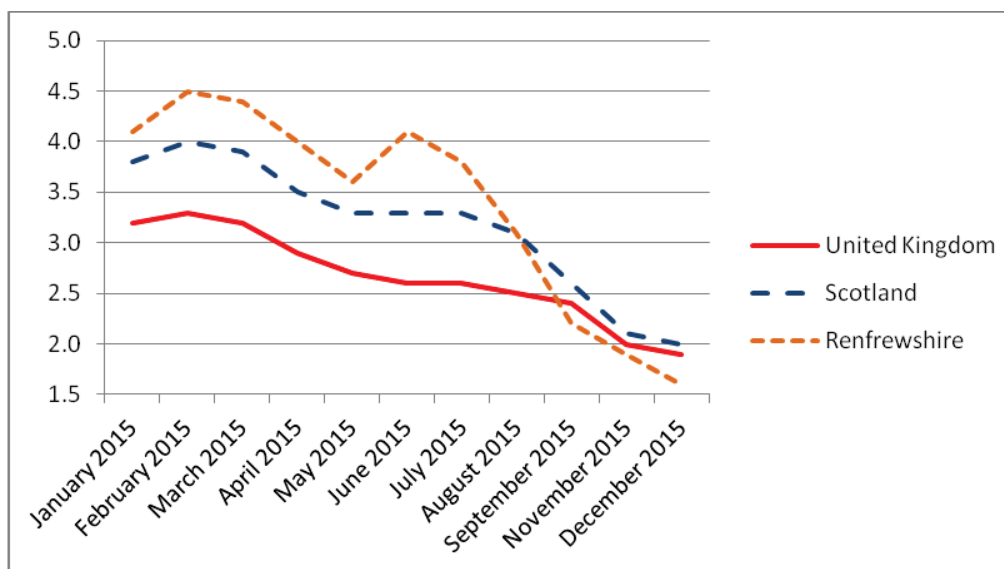
JSA Claimants: All Ages (16-64)

- The Job Seeker's Allowance rate for December 2015 was 1.9%, with jobseekers totalling 2,105.
- This month the rate has remained constant.
- The rate this time last year was higher at 2.7%.



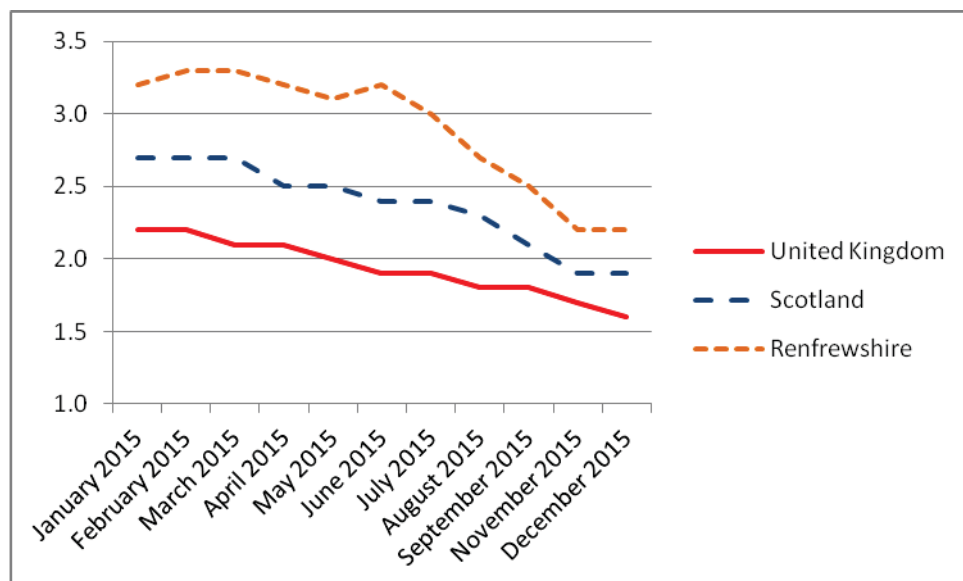
JSA Claimants: Aged 18-24

- The Job Seeker's Allowance rate for December 2015 was 1.6%, with jobseekers totalling 250.
- This month the rate has decreased, dropping by 0.3%.
- The rate this time last year was much higher at 3.8%.



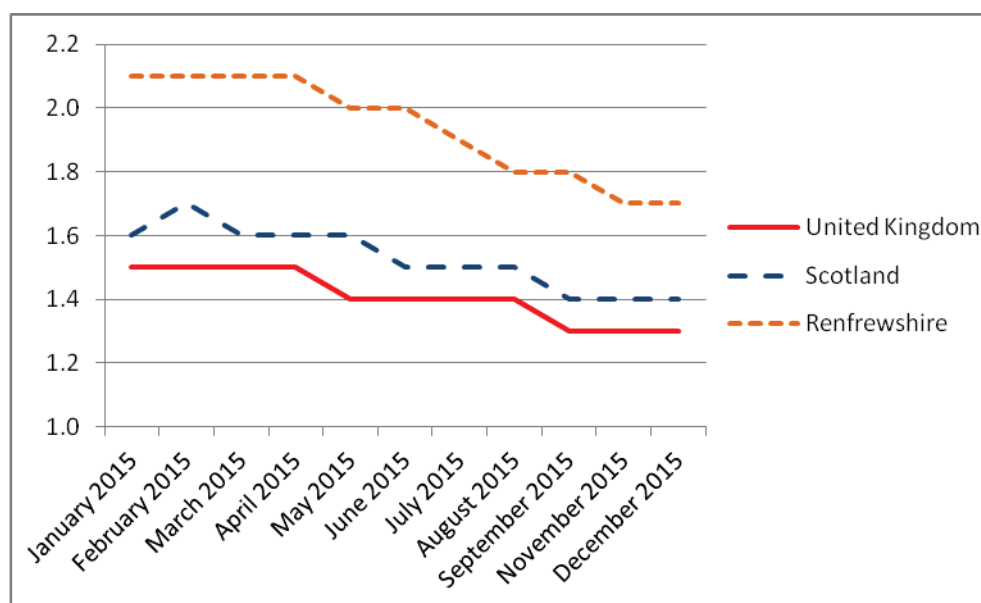
JSA Claimants: Aged 25-49

- The Job Seeker's Allowance rate for December 2015 was 2.2%, with jobseekers totalling 1,250.
- This month the rate has stayed the same.
- The rate this time last year was much higher at 3%.



JSA Claimants: Aged 50+

- The Job Seeker's Allowance rate for December 2015 was 1.7%, with jobseekers totalling 600.
- This month the rate has remained constant.
- The rate this time last year was slightly higher at 2%.



Source: ONS claimant count -
age duration with
proportions

Note: % is number of persons

Local Economic Development Update

Renfrewshire's **youth JSA rate** continues, for the third month, to be **lower** than both the Scottish and UK average, sitting at 1.6% for December 2015. The **youth JSA rate** has fallen by 2.2% in the space of just 1 year, a decrease even bigger than that of both the Scottish and UK-wide average.

The **InCube Shop** has now been open for business since October. Since then, the shop has showcased and sold the products and services offered by the resident **InCube** businesses. Two paid traineeships have already been appointed for the first phase, providing opportunities for 2 young unemployed people. The full retail academy will operate from Easter and is anticipated to support around 50 unemployed people each year to first train for and then move into retail work.

Invest in Renfrewshire Programme brings the **Business** and **Employability** agendas together. Now, there is a new information management system being developed. This allows the **Invest** teams to work better together and deliver overall better services for local Businesses and local people.

Project SEARCH has had a successful start to its first year at Renfrewshire Council, with placements at both Renfrewshire House and Council facilities elsewhere. All 12 of the trainees are progressing well.

Global Entrepreneurship Week: Renfrewshire was selected as winner of the High Impact award for Global Entrepreneurship Week 2015 as one of the top 10 contributors across the UK with 19 events running during the week, co-ordinated by InCube.

Plans for a **rail connection** between the airport, Paisley and Glasgow Central Station took another step forward on Tuesday (15 December) when the Glasgow and the Clyde Valley City Deal Cabinet endorsed plans by approving £1.149 million of funding to progress work on this key project.

New flights from **Glasgow Airport**: Blue Air, the first smart flying company with over 65 routes in Europe, operated the first flight from Glasgow to Bucharest. The new route will be available every Thursday and Sunday.

The work on new retail buildings at the Abbotsinch Retail Park is nearly complete. Over the last few months, buildings from phase three of the park's development have been opened. The new tenants are Oak Furnitureland and Tapi Carpets.

The former **BASF site in Paisley** is earmarked for residential development after a joint venture company between the Miller Development Group and Craigrossie Properties bought the site for an undisclosed sum.

The dairy group **Graham's**, whose head office is in Paisley, has bought the **First Milk** operation in Fife. Graham's will take over the site which employs 79 staff.

Up to 2,500 Scottish jobs are at risk after plans were unveiled to close tax offices throughout the country by **amalgamating HMRC's current network** of 18 offices into two major hubs in Glasgow and Edinburgh. HMRC indicated that most of their Scottish offices will close by 2020-21. It is expected that between 2,300 and 2,600 staff will continue to work in the Edinburgh regional centre and 3,400 to 3,700 in Glasgow.

London & Scottish Investments (LSI), have acquired a number of sites previously owned by Tesco across Scotland including sites at Love Street and Wallneuk Rd / Renfrew Road Paisley. Planning consent already exists for a residential development at Love Street but the new owner is currently consulting on a proposal for the Wallneuk Rd site that seeks to promote a mixed development of retail, commercial and residential uses. Any subsequent application will be reported through the Planning & Property Board.

Invest in Renfrewshire Update – January 2016

INVEST IN EMPLOYMENT

Since the launch of Invest in Renfrewshire in June 2012 **1,010** new paid posts have been created:

- **735** new jobs have been created through the wage subsidy / Employer Recruitment Incentive programmes.
- **199** Graduate Internships have been created, **126** within the Council and **63** with local companies (approved).
- **76** people have started traineeships, **68** with the Council and **8** with Businesses.

In addition:

- **7,139** unemployed people have registered and received support from the Invest in Renfrewshire employability service.
- **2,231** additional people have been supported to move into wider employment opportunities.

INVEST IN COMMUNITIES

The Invest in Renfrewshire Social Enterprise Small Grants Fund, launched in December 2014, with a budget of £100k has now:

- Dealt with enquiries from **50** social enterprise companies and organisations.
- Approved **15** awards totalling **£50,282**.

INVEST IN BUSINESS

834 local companies have signed up to the Invest in Renfrewshire initiative of which:

- **684** have created new jobs and internships for young people
- **363** companies have been offered grants to pursue development, training, exhibition and ICT projects, amounting to combined funding of over **£1,618,754**.
- Funding of **£87,100** has been provided through the micro loan fund.
- The Retail Improvement Scheme has received **146** formal applications. The applications to hand are **27**. The amount of grant support awarded to date is approximately **£720,000**.

In the last 38 months, since the start of the new Business Gateway contract:

- **991** new companies have been established with Business Gateway support.
- **426** businesses have demonstrated growth aspiration and been given a dedicated business adviser.
- **268** start-up workshops and **204** business growth workshops have been delivered.