

Paisley North, Gallowhill, Ferguslie, Paisley West & Central

Local Profile: Background Information



#ourRenfrewshire

 Renfrewshire
Community Planning
Partnership

Population

How many people live here?

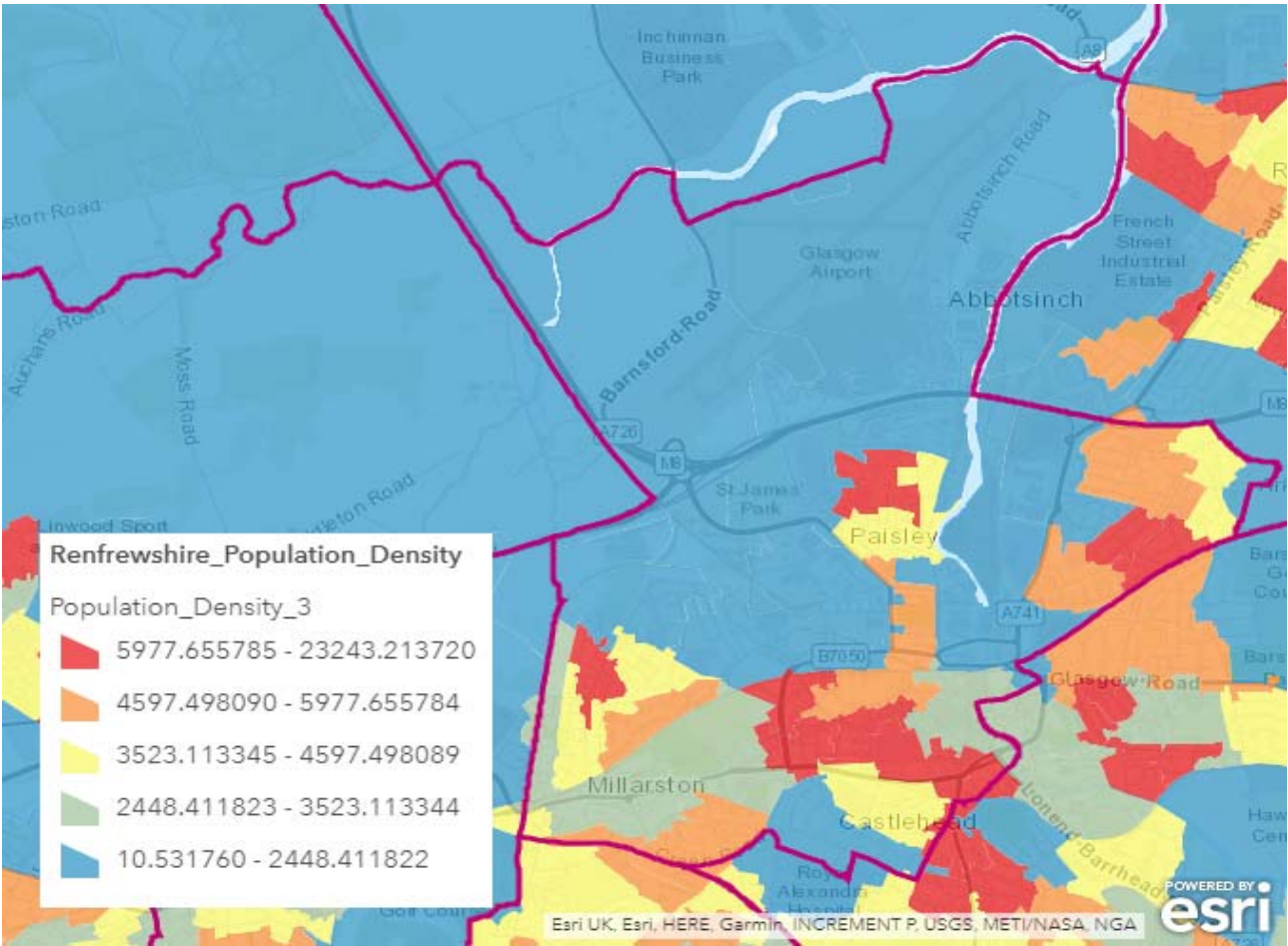
25,212 people in total live in the area and below are the main concentrations of population:

FERGUSLIE	4,116
PAISLEY WEST AND CENTRAL	10,452
GALLOWHILL	5,600
PAISLEY NORTH	5,051

What age are people living here?

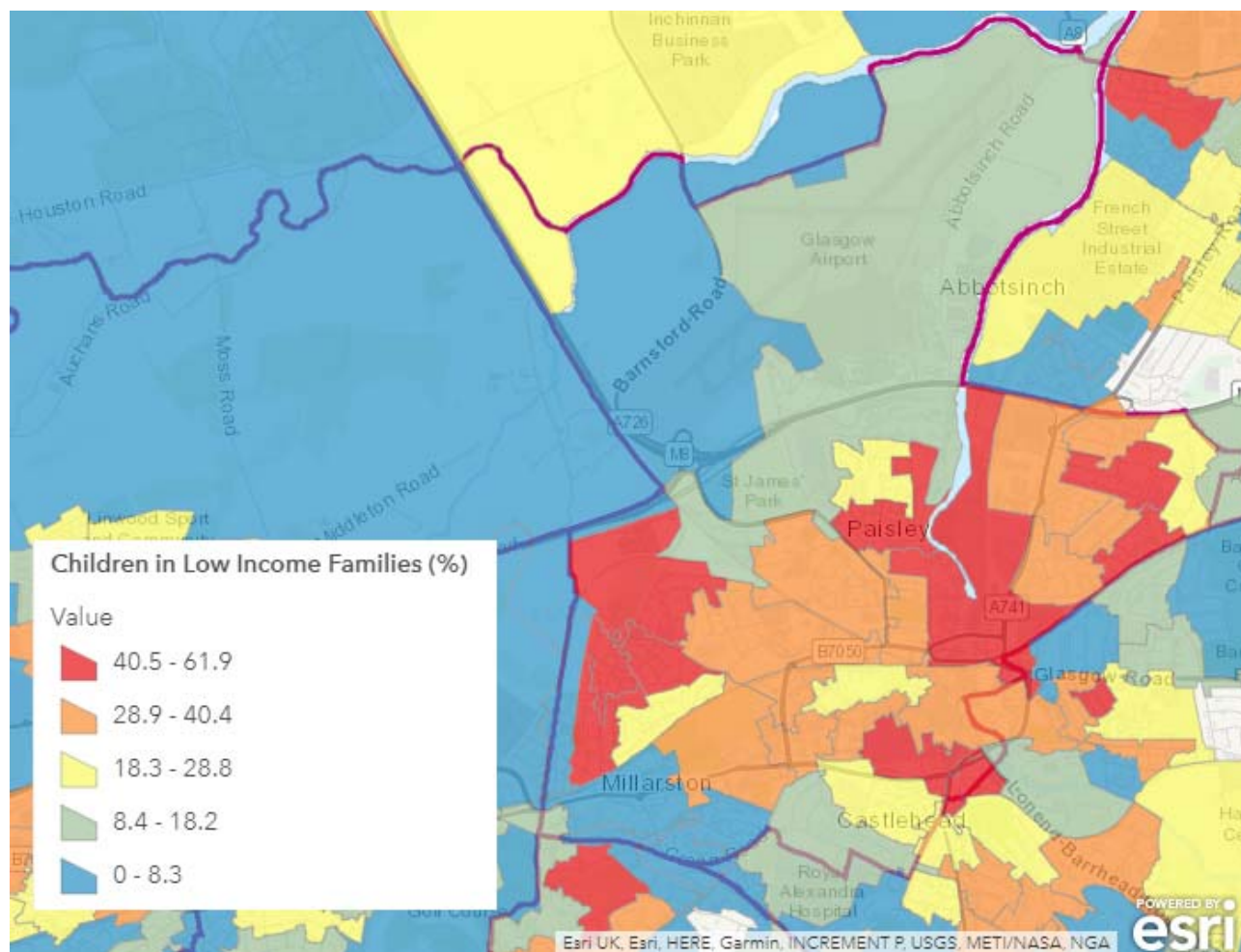
	Under 16	Aged 16-64	Aged 65+
Paisley Gallowhill and Hillington	19%	63%	18%
Paisley Ferguslie	23%	69%	8%
Paisley West	18%	67%	15%
Paisley Central	12%	75%	13%
Paisley North	19%	69%	12%
Paisley North West	14%	71%	16%
Overall	17%	69%	14%

Population Density



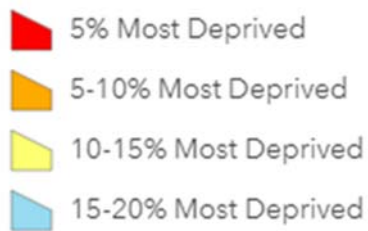
Children in Low Income Families

As recorded by the Scottish Index of Multiple Deprivation



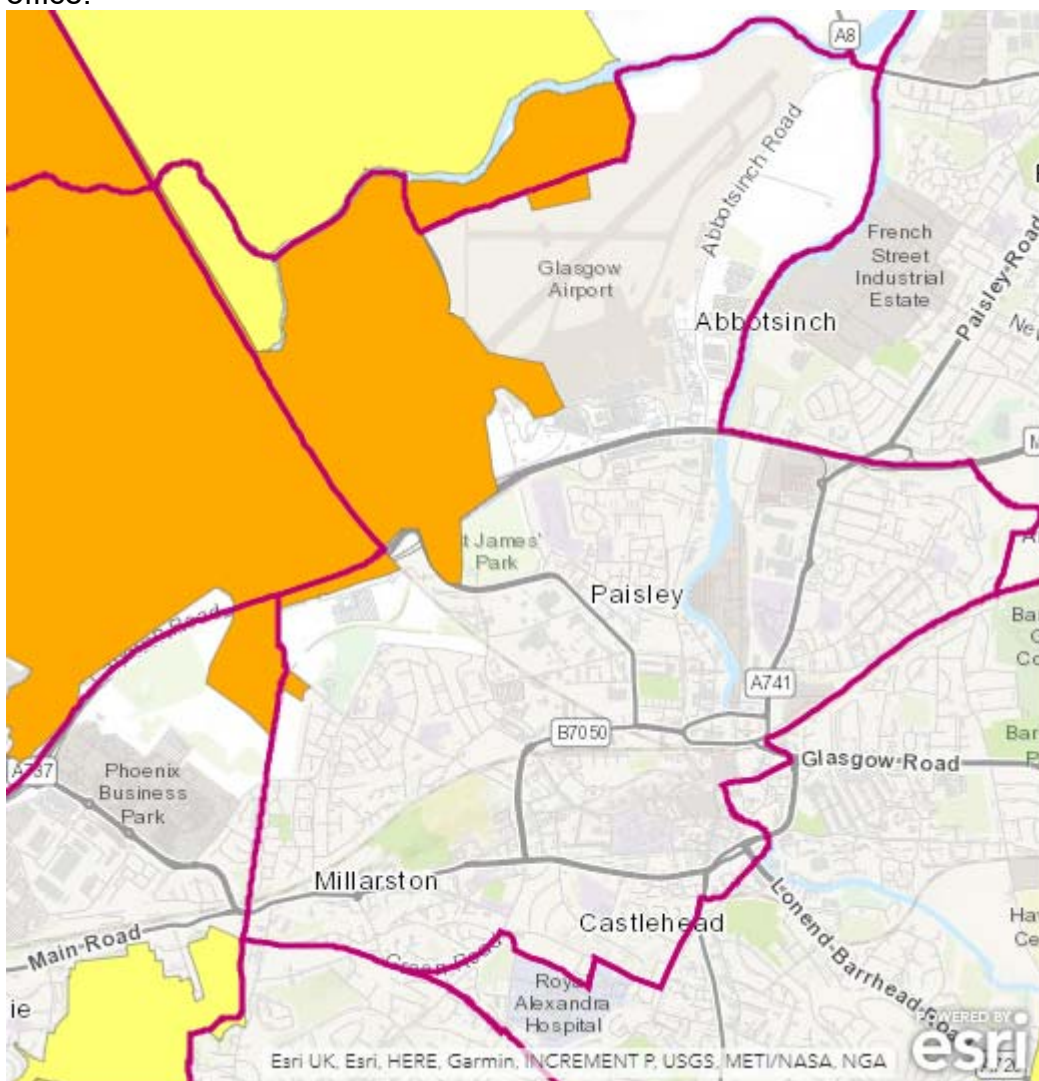
The tables below are also taken from the Scottish Index of Multiple Deprivation and show other dimensions of deprivation: access, health and crime. The key below applies to the following three tables.

SIMD 2016 - Access Deprivation



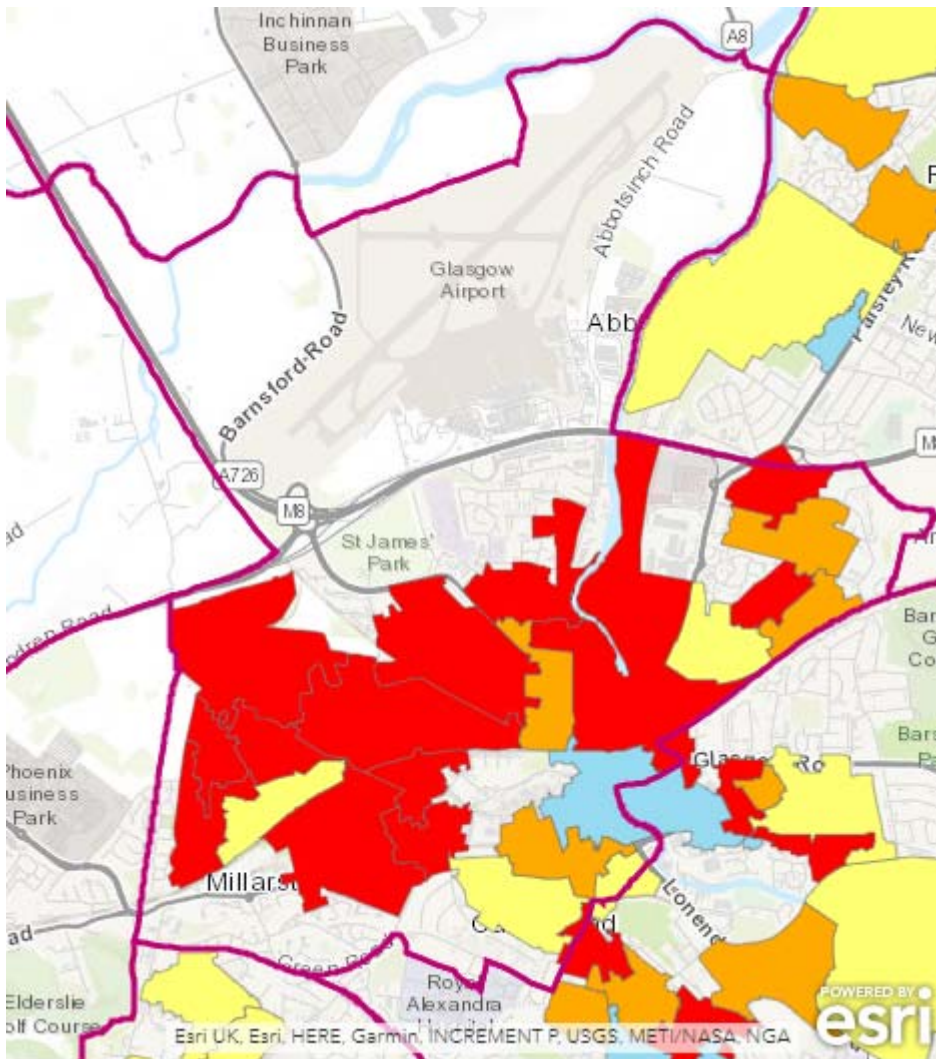
Access Deprivation

This measure includes drive time to GP, to retail centre, to petrol station, to primary and secondary schools, to post office and public transport time to GP, to retail centre, to post office.



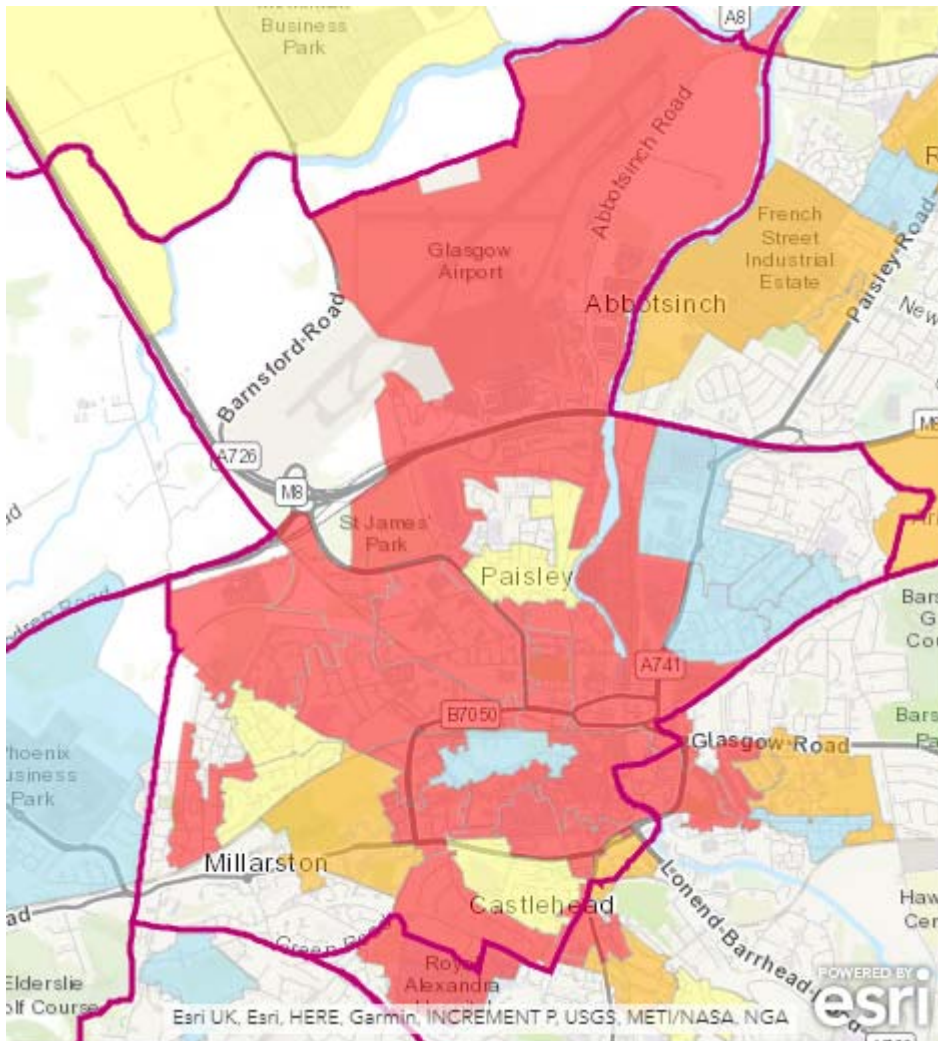
Health Deprivation

This measure includes the Standardised Mortality Ratio; Hospital stays related to alcohol misuse; Hospital stays related to drug misuse; Comparative Illness Factor; Emergency stays in hospital; Proportion of population being prescribed drugs for anxiety, depression or psychosis; and Proportion of live singleton births of low birth weight.



Crime Deprivation

This measure includes Domestic house breaking, Drug offences, Common assault, Crimes of violence, Vandalism and Sexual offences.



Place Standard, 2017

200 residents from Paisley North Local Partnership area responded to the Our Renfrewshire, Place Standard Consultation in 2017. 67 % of the respondents were female and 31 % were male, with most respondents of working age.

Safety came out top, as terms mentioned when thinking about priorities for the area. The wordle below shows the terms that were most frequently mentioned in the largest text, when discussing priorities for the area.



Most positive responses

Respondents felt most strongly positive about the following themes:



Public transport

Natural space

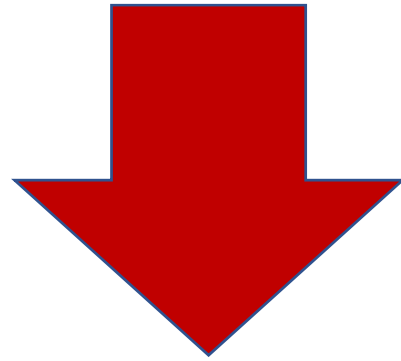
Housing and community

Identity and belonging

Least positive responses

Respondents felt negative about the following themes:

Moving around
Traffic and parking
Work and local economy
Feeling safe
Care and maintenance
Influence and sense of control



Mixed responses

Most mixed responses were received about streets and spaces; play and recreation; facilities and amenities; and social contact.

Safer & Greener data

Safer and Greener – Exercises in Ferguslie, Shortroods and Gallowhill

Ferguslie 2016 – 64% of people feel safe/very safe. Priorities were rubbish/litter, animal nuisance, drug misuse/dealing.

Gallowhill 2017 – Priorities: drug issues, violent crime, housebreaking, vandalism, litter, speeding vehicles. Improvements suggested are local facilities for youth, more CCTV.

Shortroods - 67% of people feel very/fairly safe. Priorities: drugs misuse/dealing, violent crime, housebreaking, litter. Improvements: more activities/youth clubs, address dog fouling.

Children & Education

Education resources

University Of The West Of Scotland

Secondary School

Castlehead High School (non denominational)

Primary Schools

Mossvale Primary School (non denominational)

Gallowhill Primary School (non denominational)

St Catherine's Primary School (denominational)

St Mary's Primary School (denominational)

West Primary (non denominational)

St Fergus' Primary School (denominational)

Glencoats Primary School (non denominational)

Nurseries

Happitots Nursery (private or voluntary sector)

Mossvale Nursery (local authority)

Rainbow Nursery (private or voluntary sector)

Gallowhill Nursery (local authority)

St Catherine's Nursery (local authority)

Kidz @ College Nursery (private or voluntary sector)

Little Learners Childrens Nursery (private or voluntary sector)

Orchard Grove Nursery (private or voluntary sector)

Wee Friends Nursery (private or voluntary sector)

Paisley Pre-Five Centre (local authority)

Hugh Smiley Pre-Five Centre (local authority)

St Mary's Nursery (local authority)

Maxwellton Park Day Nursery (private or voluntary sector)

West Nursery (local authority)

Abbey Nursery (private or voluntary sector)

Douglas Street Pre-Five Centre (local authority)

Glencoats Lodge Nursery (private or voluntary sector)

Ferguslie Pre-Five Centre (local authority)

Hillview Nursery (private or voluntary sector)

Parks & Play Areas

Fountain Gardens

Playpark at Arkleston Court

Playpark at Gallowhill Community Centre and Library

Playpark 30 metres North East of No 49, Lochore Avenue

Playpark 30 metres East of No 61, Lochore Avenue

Playpark at Lochore Avenue

Playpark to North of Falcon Crescent

Sites at Darkwood Crescent and Ferguslie Park Avenue and, Bankfoot Road

Glencoats Park

South Candren Village Green

Ferguslie Gardens

Maxwellton Park

Health Resources

GP Practices

The Love Street Medical Practice
The Greenlaw Practice
New Sneddon Street Clinic
Back Sneddon Centre
St James Medical Centre
Russell Institute
King Street Surgery
The Tannahill Centre

Pharmacies & Dentists

Boots Pharmacy, Airport
Boots Pharmacy, Netherhill
Lloyds Pharmacy, Love Street
Abbey Chemist
Boots Pharmacy, Plaza
Meek Dental Surgery
Lloyds Pharmacy, High Street
St Mirren Brae Dental
Boots Pharmacy, Paisley Centre
Johnston Street Dental Centre
Abbey Dental Care
Finesse Dental Care
Lloyds Pharmacy
The Co-operative Pharmacy
Wellmeadow Dental Practice
Paisley Dental Clinic
Lloyds Pharmacy, Tannahill

Care Homes, Extra Care & Sheltered Housing

Care homes are listed below:

Care Homes

Kyle Court Care Home (60 units)
Westerfield Care Home (62 units)
Priory Park Nursing Home (24 units)

Extra Care, Sheltered & Amenity Housing

Glencairn Court (90 units)

Springbank Complex (33 units)

Montgomery Court (16 units)

Kilearn Square (1 unit)

Gallowhill Road (29 units)

Spiersfield Gardens (34 units)

Newton Street (17 units)

Wilson Street (35 units)

Gallacher Court (25 units)

St James Complex (28 units)

Darkwood Court (21 units)

‘Feel Good Ferguslie!’ Community Consultation, March 2018

Undertaken by Active Communities and partners

Almost 2000 local people were asked a series of questions regarding their community, with most questions producing responses from around 300 individuals.

Participants were asked to name three good things about their community. The top three responses were:

- Tannahill Centre
- Ferguslie Park Community Library
- Youth Club in Tannahill

Participants were asked to name two things they would like to have. The top two answers were:

- More Youth Clubs
- More Childrens’ Groups

Participants were asked to about how they find out about things in their community. The top four answers were:

- Word of mouth
- Facebook
- The Tannahill Centre
- Posters and leaflets

Adult Health and Wellbeing across Renfrewshire

- 80% of people say their health is good or very good.
- 15% of people say they smoke, 10% drank alcohol at least twice per week.
- 7% of people feel isolated from family and friends.
- 46% say they have at least 5 portions of fruit and veg per day.
- 47% of people do 150 minutes of exercise per week.